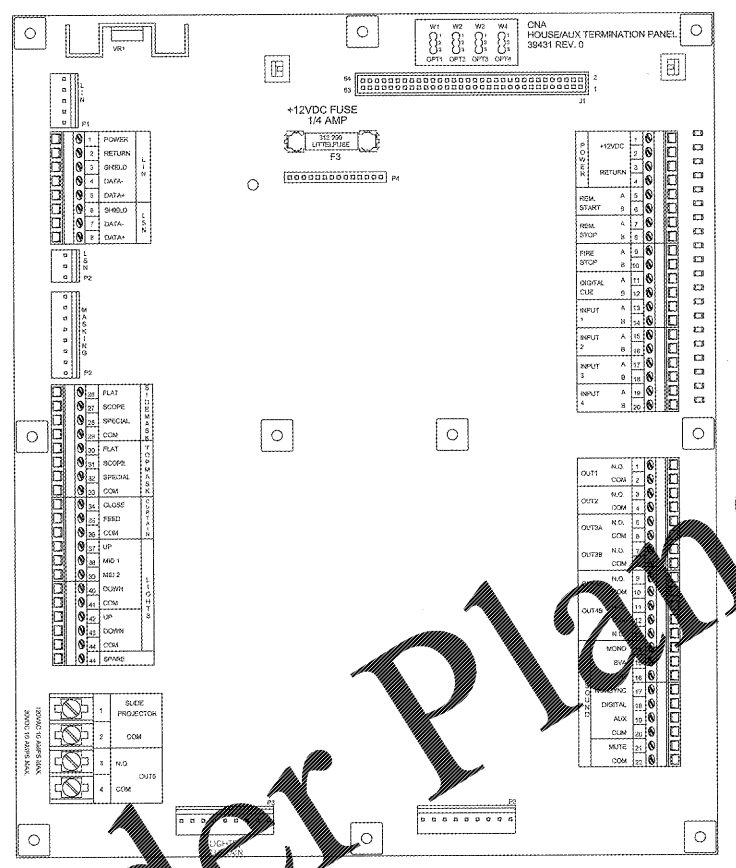
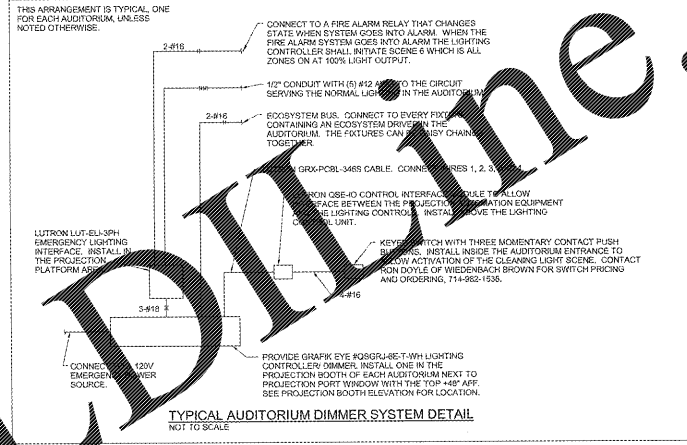
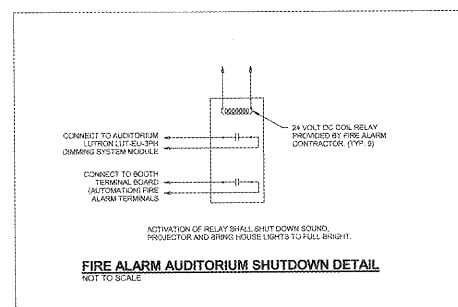
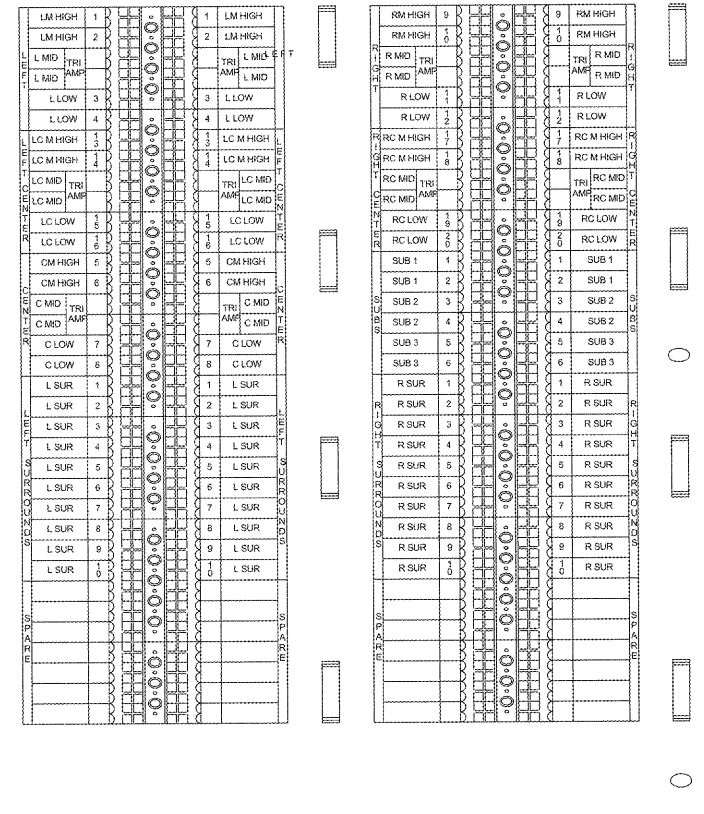


- SPECIAL SYSTEMS KEY NOTES:**
- 3/8" 2-#10 GROUND WIRES IN 1" CONDUIT FROM JUNCTION BOX TO SOUND RACK LOAD CENTER.
 - 3/4" CONDUIT TO FIRE ALARM SYSTEM CONTROL PANEL.
 - 1/2" CONDUIT WITH (2) #14 AWG TO FIRE ALARM RELAY. SEE DETAIL ON E501 AND FIRE ALARM SHUTDOWN DETAIL ON THIS SHEET.
 - 1/2" CONDUIT WITH (2) #14 AWG TO FIRE ALARM RELAY. SEE DETAIL ON E501 AND FIRE ALARM SHUTDOWN DETAIL ON THIS SHEET.
 - 1/2" CONDUIT WITH (2) #14 AWG TO FIRE ALARM RELAY. SEE DETAIL ON E501 AND FIRE ALARM SHUTDOWN DETAIL ON THIS SHEET.
 - 2" FOR VGA AUTO NETWORK CABLE TO SOUND RACK. ROUTE TO ABOVE ACCESSIBLE CEILING. REFER TO NOTE #14 FOR CONTINUATION.
 - SURROUND SOUND WIRING. INSTALL (1) CABLE FROM INNOVATIVE CINEMA SOLUTIONS TO EACH LCU/SPEAKER.
 - CONVENIENCE RECEPTACLE. SEE PROJECTION LEVEL POWER PLANS.
 - TO ASILE AND STEP LIGHTS.
 - ASILE/STEP LIGHT TRANSFORMER. CONNECT TO AUDITORIUM PANELBOARD. SEE PANELBOARD SCHEDULES. (TENANT FURNISHED. ELECTRICAL CONTRACTOR INSTALLED).
 - PROJECTOR CONSOLE POWER. PROVIDE #10/2" JUNCTION BOX. HANG FROM AND MAKE POWER CONNECTION TO PROJECTOR WITH 4-#8 14/2 GROUND WIRE IN A 3/4" CONDUIT. RIGHT SIDE OF BOX SHALL BE 6" LEFT OF THE CENTERLINE OF THE SCREEN AS INDICATED. REFER TO THE PROJECTION LEVEL POWER PLANS AND THE PANELBOARD SCHEDULES FOR CIRCUIT INFORMATION.
 - VGA AUTO NETWORK. PROVIDE #3/8" 2-#14 BOX WITH SCREW COVER. CONNECT TO PROJECTOR WITH (1) 3'-0" LIQUID TIGHT FLEXIBLE CONDUIT. PROVIDE 3/4" CONDUIT FROM BOX TO TERMINAL AUTISM PANEL. PROVIDE 300cm ON FREE END, AND MAKE FINAL CONNECTIONS FOR CONTROL WIRING. LOCATE MAXIMUM OF 20" TO THE RIGHT OF PROJECTOR CONSOLE POWER BOX.
 - GROUP EYE CONTROL UNIT. CONNECT TO EMERGENCY POWER. CONTROL UNITS IN AUDITORIUMS 1, 3, 5, 7, 9, 11, 13 AND 15 SHALL BE CONNECTED TO INVERTER CIRCUIT #W-1-13 AND THE CONTROL UNITS IN AUDITORIUMS 2, 4, 6, 8, 10, 12, 14 AND 16 SHALL BE CONNECTED TO INVERTER CIRCUIT #W-1-14. SEE TYPICAL AUDITORIUM DIMMER SYSTEM DETAIL ON THIS SHEET.
 - PROJECTION WINDOW. RE ARCHITECTURAL DRAWINGS.
 - 2" FOR VGA AUTO NETWORK BOX TO ABOVE ACCESSIBLE CEILING. REFER TO NOTE #14 FOR CONTINUATION.
 - SOUND AMP/PRE POWER. PROVIDE #1/2" BOX WITH SCREW COVER. 3-#10 2-#10 GROUND WIRES IN 1" CONDUIT FROM PANELBOARD TO #2" BOX. PROVIDE CONDUIT WIRE TO SOUND RACK. MAKE ALL CONNECTIONS.
 - TERMINAL BOX AUDIO. SEE BOOTH TERMINAL BOARD - AUDIO DETAIL ON E501.
 - NOT USED.
 - SOUND RACK.
 - DOUBLE DUPLEX RECEPTACLE FOR DTDS PROJECTOR. RIGHT SIDE OF RECEPTACLE SHALL BE 8"-12" LEFT OF #3/8" 2-#14 BOX FOR PROJECTOR CONSOLE POWER AS INDICATED.
 - 1" CONDUIT TO SOUND RACK FOR CELL-PHONATE SWITCHING.
 - 2-1/2" CONDUIT FROM AUDIO TERMINAL BOX TO SOUND RACK.
 - TO SCREEN WALL SPEAKERS. SEE BOOTH TERMINAL BOARD - AUDIO DETAIL ON E501. INSTALL CABLES FURNISHED BY AMC FROM INNOVATIVE CINEMA SOLUTIONS.
 - 1/2" CONDUIT WITH (1) BELLEVUE #75 TO BACKGROUND MUSIC JUNCTION BOX. LEAVE 18" COILED FOR CONNECTION BY OWNER.



- NOTES**
- ELECTRICAL CONTRACTOR SHALL MAKE ALL TERMINATIONS ON THIS BOARD UTILIZING OUTER TERMINALS. INNER TERMINALS CONNECTS BY TENANT.
 - PULL ALL CABLES 18" FAST BOTTOM OF PANEL.
 - ROUTE CABLES AROUND THE APPROPRIATE OUTER SIDES OF PANEL.
 - TRIM TO LENGTH, STRIP 1/4", AND CRAMP ON BARRIER SPACE CONNECTOR.
 - BARRIER SPACE CONNECTORS ARE FURNISHED WITH TERMINAL BOARD.
 - FURNISHED BY AMC FROM: INNOVATIVE CINEMA SOLUTIONS, 22952 W 80TH ST., 60TH SHAWNEE, KANSAS 66206. CUSTOMER SERVICE: PAUL OSTROMANN 913-979-4129 TECHNICAL SUPPORT: TOM OSTROMANN 913-225-5699



- NOTES**
- ELECTRICAL CONTRACTOR SHALL MAKE ALL TERMINATIONS ON THIS BOARD UTILIZING OUTER TERMINALS. INNER TERMINALS CONNECTS BY TENANT.
 - PULL ALL CABLES 18" FAST BOTTOM OF PANEL.
 - ROUTE CABLES AROUND THE APPROPRIATE OUTER SIDES OF PANEL.
 - TRIM TO LENGTH, STRIP 1/4", SECURE TO TERMINAL.
 - FURNISHED BY AMC FROM: INNOVATIVE CINEMA SOLUTIONS, 22952 W 80TH ST., 60TH SHAWNEE, KANSAS 66206. CUSTOMER SERVICE: PAUL OSTROMANN 913-979-4129 TECHNICAL SUPPORT: TOM OSTROMANN 913-225-5699

GEORGINA
No. P02488
Professional
SEAL
DATE

ENGINEERING
Chibren, Dicks, Scott, Inc.
9262 E. 43rd Street, Suite 110
Raytown, Missouri 64113
Phone: (816) 338-1791
Fax: (816) 338-1792
www.gdsco.com
GEORGINA.COM HYPERTEXT

SHEET LEGEND

0000	GENERAL INFORMATION & SCOPE OF WORK
1000	SCHEMATIC & PANEL SCHEDULES
2000	FLOOR PLANS & CEILING PLANS
3000	MECHANICAL
4000	ELECTRICAL
5000	ELECTRICAL SYMBOLS & NOTATIONS
6000	MECHANICAL SYMBOLS & NOTATIONS
7000	ELECTRICAL SYMBOLS & NOTATIONS
8000	MECHANICAL SYMBOLS & NOTATIONS
9000	ELECTRICAL SYMBOLS & NOTATIONS

MADISON YARDS 8

AMC NEW BUILD
905 MEMORIAL DRIVE SE
ATLANTA, GA 30316

Amc

American Multi-Cinema, Inc.
One AMC Way
1500 Ash Street
Lawrence, KS 66044

No. Date Description

Project Issue Date

KEY PLAN

SHEET TITLE:
ELECTRICAL DETAILS

SHEET NUMBER:
E703