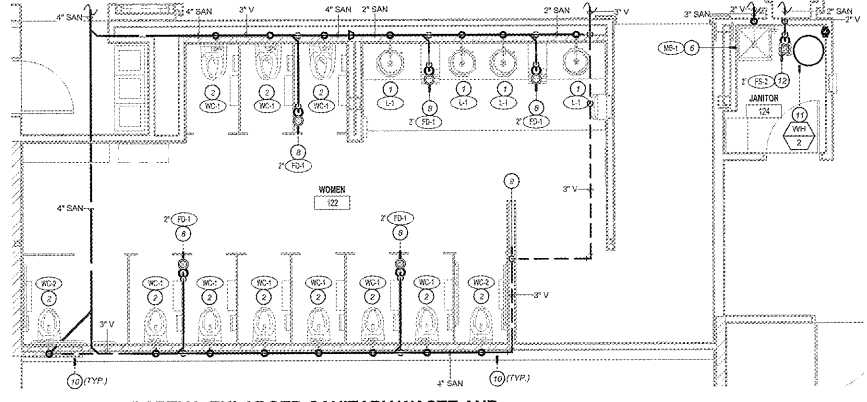
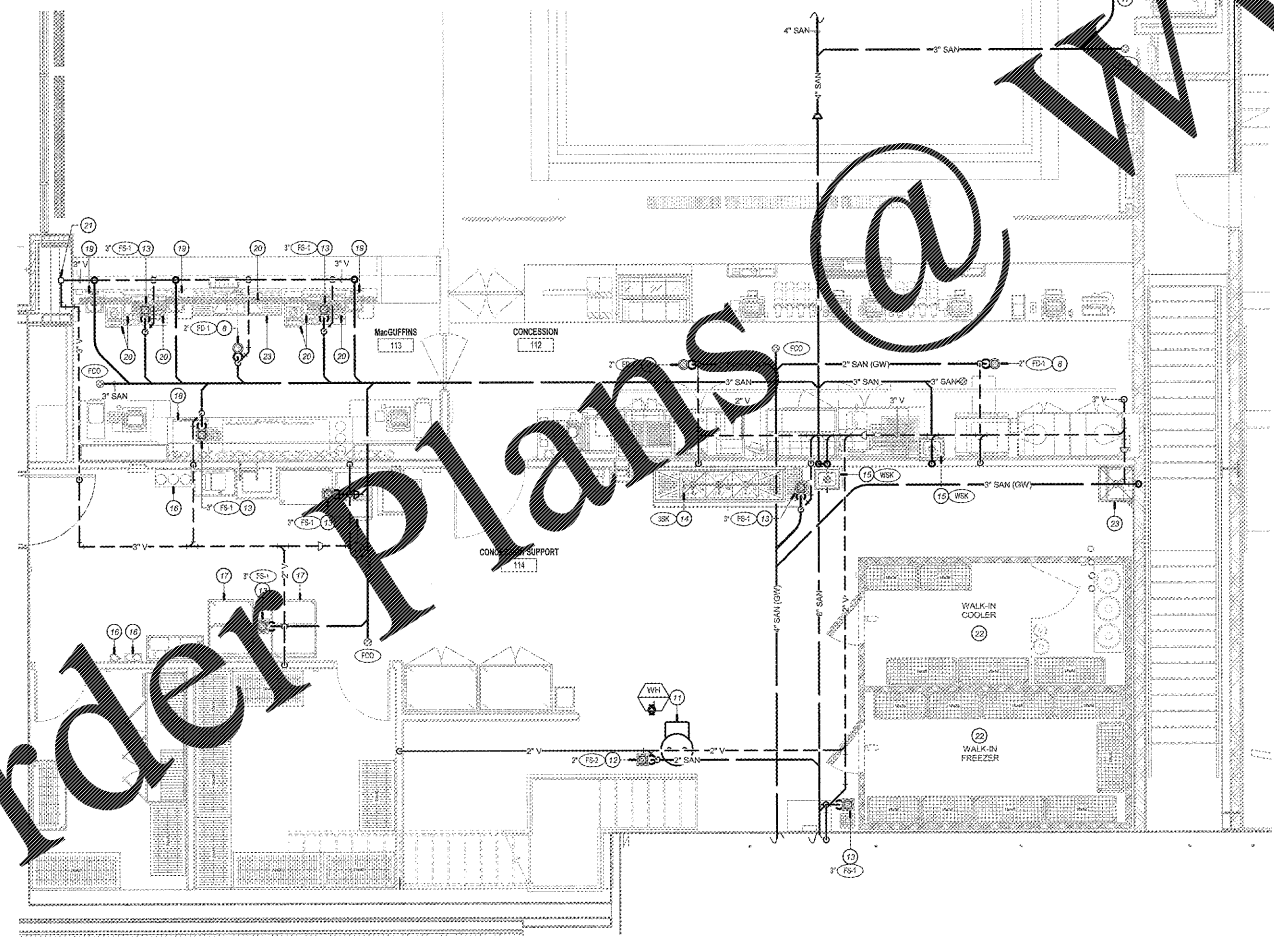


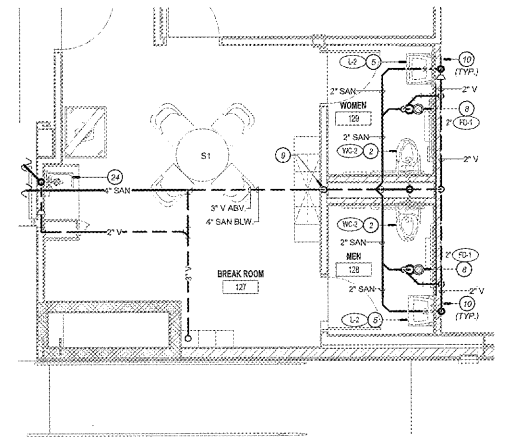
PARTIAL ENLARGED SANITARY WASTE AND VENT PLUMBING PLAN - PATRON USE MENS AND FAMILY RESTROOMS  
1/4" = 1'-0"



PARTIAL ENLARGED SANITARY WASTE AND VENT PLUMBING PLAN - PATRON USE WOMENS RESTROOMS  
1/4" = 1'-0"



PARTIAL ENLARGED SANITARY WASTE AND VENT PLUMBING PLAN - MACGUFFINS, CONCESSION, CONCESSION SUPPORT  
1/4" = 1'-0"



PARTIAL ENLARGED SANITARY WASTE AND VENT PLUMBING PLAN - EMPLOYEE USE RESTROOMS  
1/4" = 1'-0"

PLUMBING GENERAL NOTES

A. REFER TO SHEET P003 FOR PLUMBING GENERAL NOTES.

PLUMBING PLAN NOTES

1. INSTALL NEW FAUCET ON NEW LAVATORY BASINS. INSTALL MAX-1 ON NEW SUPPLY TO FAUCETS. ROUTE THE NEW DOWN PIPING WELL BEHIND LAVATORIES AT THE STOP VALVE ELEVATION. CONNECT TO NEW PIPE IN THE WALL FOR WASTEWATER. CONNECT ON AND WASTE PIPING TO THEIR PLUMBING CONNECTIONS AT WALL. PROVIDE NEW STOP VALVES AT WALL. SLOPPY PANS FOR NEW APPOINTMENT.
2. PROVIDE NEW WATER CLOSET WITH 4" WASTE AND 2" VENT. CONNECT WASTE PIPING TO NEW CONNECTION AT WALL.
3. PROVIDE NEW URINAL WITH 2" WASTE AND 1-1/2" VENT. CONNECT WASTE PIPING TO NEW CONNECTION AT WALL.
4. PROVIDE NEW WATER CLOSET WITH 4" WASTE AND 2" VENT. CONNECT WASTE PIPING TO NEW CONNECTION AT WALL.
5. PROVIDE NEW LAVATORY WITH 2" WASTE AND 1-1/2" VENT. CONNECT WASTE PIPING TO NEW CONNECTION AT WALL.
6. PROVIDE NEW MOP BASK WITH 2" WASTE AND 2" VENT.
7. PROVIDE NEW DRAINING FOUNTAINS WITH 1-1/2" WASTE AND 1-1/2" VENT. TRANSITION TO 2" WASTE BELOW FLOOR. FRAMES OUT WALL TO SUPPORT NEW ELECTRIC COOLERS.
8. PROVIDE NEW FLOOR DRAIN WITH WASTE AND 2" VENT. REFER TO PIPE TRENCH DETAIL ON DETAIL SHEET.
9. ROUTE 2" VENT DOWN IN WALL TO BEHIND THEATRE PLATFORM ABOVE. EXTEND VENT LINE TO PLUMBING FIXTURES. COORDINATE WITH MECHANICAL CONTRACTORS FOR VENT AND OTHER PIPING.
10. SINKS, TUBS, SHOWERS AND OTHER FIXTURES ALL REQUIRED TO HAVE UNUSUAL FIXTURE CARRIERS AND WASTE PIPING. REFER TO DETAILS.
11. PROVIDE NEW 2" WASTE AND 2" VENT. ROUTE DRAIN LINES FROM WATER HEATER TO ADJACENT FLOOR SINK. TERMINATE OVER FLOOR SINK WITH INDIRECT DRAIN. REFER TO WATER HEATER DETAIL ON DETAIL SHEET.
12. PROVIDE NEW FLOOR SINK WITH 2" WASTE AND 2" VENT. REFER TO PIPE TRENCH DETAIL ON DETAIL SHEET.
13. PROVIDE NEW FLOOR SINK WITH 2" WASTE AND 2" VENT. REFER TO PIPE TRENCH DETAIL ON DETAIL SHEET.
14. PROVIDE NEW THREE-COMPARTMENT SINK. ROUTE DRAIN LINE FROM SINK TO FLOOR SINK AND TERMINATE WITH INDIRECT DRAIN. PROVIDE AIR INTAKE AND FLOW CONTROL VALVE ON WASTE LINE. REFER TO THREE-COMPARTMENT SINK DETAIL AND INDIRECT DRAIN DETAIL ON DETAIL SHEET.
15. PROVIDE NEW SINK WITH 2" WASTE AND 1-1/2" VENT.
16. PROVIDE DRAIN FROM WATER FILTER IF REQUIRED. ROUTE TO FLOOR SINK AND TERMINATE WITH INDIRECT DRAIN. REFER TO INDIRECT DRAIN DETAIL ON DETAIL SHEET.
17. PROVIDE DRAIN FROM ICE MACHINE. ICE BIN, COKE 'FREEZER' AND 'ICE' ROUTE TO FLOOR SINK AND TERMINATE WITH INDIRECT DRAIN. REFER TO INDIRECT DRAIN DETAIL ON DETAIL SHEET.
18. INSTALL NEW GLASS WASHER 'WASH' BY OTHERS. ROUTE DRAIN LINE FROM GLASS WASHER TO FLOOR SINK AND TERMINATE WITH INDIRECT DRAIN. REFER TO INDIRECT DRAIN DETAIL ON DETAIL SHEET.
19. INSTALL NEW SINK 'TRAP' OR 'TRAP' BY OTHERS WITH 2" WASTE AND 1-1/2" VENT. CONNECT VENT TO VENT MAN WITH BAR CASING. PROVIDE STRAINER WITH TAP. WASTE ARM, ESCUTCHEON AND ALL OTHER COMPONENTS REQUIRED FOR A COMPLETE INSTALLATION.
20. PROVIDE DRAIN FROM ICE BIN, BUDA GUN HOLSTER, DRAIN BOARD, DRIP TRAY, AND KEG REFRIGERATOR. ROUTE TO FLOOR SINK AND TERMINATE WITH INDIRECT DRAIN. REFER TO INDIRECT DRAIN DETAIL ON DETAIL SHEET.
21. 2" VENT DOWN IN CHASE TO BELOW CASWORK COUNTER. TURN LINE OUT OF CHASE AND ROUTE AS HIGH AS POSSIBLE IN CASWORK.
22. WALK-IN FREEZER/COOLER BY OTHERS. ROUTE DRAIN FROM WALK-IN FREEZER/COOLER TO ADJACENT FLOOR SINK AND TERMINATE OVER FLOOR SINK WITH INDIRECT DRAIN. INSULATE DRAIN LINE WITHIN FREEZER TO PREVENT FROM FREEZING. REFER TO WALK-IN COOLER/REFRIGERATOR CONDENSATE DRAIN DETAIL AND INDIRECT DRAIN DETAIL ON DETAIL SHEET.
23. INSTALL NEW MOP BASK 'WASK' BY OTHERS WITH 2" WASTE AND 2" VENT. CONNECT WASTE PIPING TO NEW CONNECTION AT FLOOR. PROVIDE STRAINER WITH TAP, P-TRAP AND ALL OTHER COMPONENTS REQUIRED FOR A COMPLETE INSTALLATION.
24. INSTALL NEW SINK 'TRAP' OR 'TRAP' BY OTHERS WITH 2" WASTE AND 1-1/2" VENT. PROVIDE STRAINER WITH TAP, WASTE ARM, ESCUTCHEON AND ALL OTHER COMPONENTS REQUIRED FOR A COMPLETE INSTALLATION.



ENGINEERING  
TML SCOTT  
3015 Peachtree Industrial Blvd  
Atlanta, GA 30328  
Phone: (404) 251-1700  
Fax: (404) 251-2127  
www.tmlscott.com  
REG. EXP. DATE 07/20/2023

SHEET LEGEND

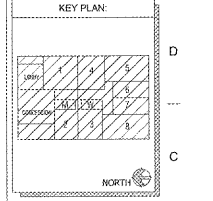
0001	GENERAL MECHANICAL
0002	MECHANICAL
0003	MECHANICAL
0004	MECHANICAL
0005	MECHANICAL
0006	MECHANICAL
0007	MECHANICAL
0008	MECHANICAL
0009	MECHANICAL
0010	MECHANICAL
0011	MECHANICAL
0012	MECHANICAL
0013	MECHANICAL
0014	MECHANICAL
0015	MECHANICAL
0016	MECHANICAL
0017	MECHANICAL
0018	MECHANICAL
0019	MECHANICAL
0020	MECHANICAL

MADISON YARDS 8  
AMC NEW BUILD  
905 MEMORIAL DRIVE SE  
ATLANTA, GA 30316



No.	Date	Description

Project Issue Date:



SHEET TITLE:  
ENLARGED PLUMBING FLOOR PLANS

SHEET NUMBER:  
P401

Order Plans @ [www.LDILine.com](http://www.LDILine.com)