

Order Plans @

WWW.LDILine.com

**PLUMBING GENERAL NOTES**  
 A. REFER TO SHEET 2006 FOR PLUMBING GENERAL NOTES

**PLUMBING PLAN NOTES**

- 1 GAS FIRED PACKAGE ROOFTOP UNIT - INPUT CAPACITY AS INDICATED ON MECHANICAL SCHEDULE SHEET.
- 2 GAS PIPING ON ROOF, ROUTE AS REQUIRED TO AVOID ROOF WALKWAYS, EXHAUST FANS, ETC. RAINY ALL EXPOSED PIPE PROVIDE SUPPORTS ON ROOF FOR PIPE AS REQUIRED. REFER TO ROOF BALCONY PIPE SUPPORT DETAIL ON DETAIL SHEET.
- 3 PROVIDE SHUT-OFF VALVE, PRESSURE REGULATOR, DIRT LEG, UNKIN, AND FLEXIBLE CONNECTIONS HAVE CONNECTIONS TO UNIT AS REQUIRED. SET REGULATOR TO PROVIDE 11" WC AT UNIT. FIELD VERIFY REQUIRED PRESSURE REGULATOR SET PRESSURE. REFER TO ROOFTOP UNIT CONNECTION DETAIL ON DETAIL SHEET.
- 4 VENT THRU ROOF. SIZE AS INDICATED. REFER TO VENT THRU ROOF DETAIL ON DETAIL SHEET.
- 5 3/4" COLD WATER LIFT FROM BELOW TO ROOF HYDRANT RH-1. REFER TO ROOF HYDRANT DETAIL ON DETAIL SHEETS.

**GEORGIA REGISTERED PROFESSIONAL ENGINEER**  
 T.M.L. SCOTT  
 No. PE015498  
 12/21/13

ENGINEERING  
 Gibbons, Drake, Scott, Inc.  
 9201 E. 60th Street, Suite 1109  
 Marietta, Georgia 30067  
 Phone: (770) 578-2347  
 Fax: (770) 578-2347  
 www.gds-engineering.com  
 CEE000016, CEA 459056263

**SHEET LEGEND**

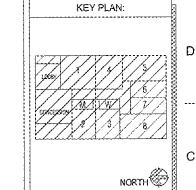
GEN - GENERAL MECHANICAL & ELECTRICAL  
 ARCH - ARCHITECTURAL  
 MECH - MECHANICAL  
 ELEC - ELECTRICAL  
 PIP - PLUMBING  
 W/P - WALKWAY

**MADISON YARDS 8**  
 AMC NEW BUILD  
 905 MEMORIAL DRIVE SE  
 ATLANTA, GA 30316

**Amc**  
 American Multi-Cinema, Inc.  
 One AMC Way  
 11500 Ash Street  
 Lenexa, KS 66211

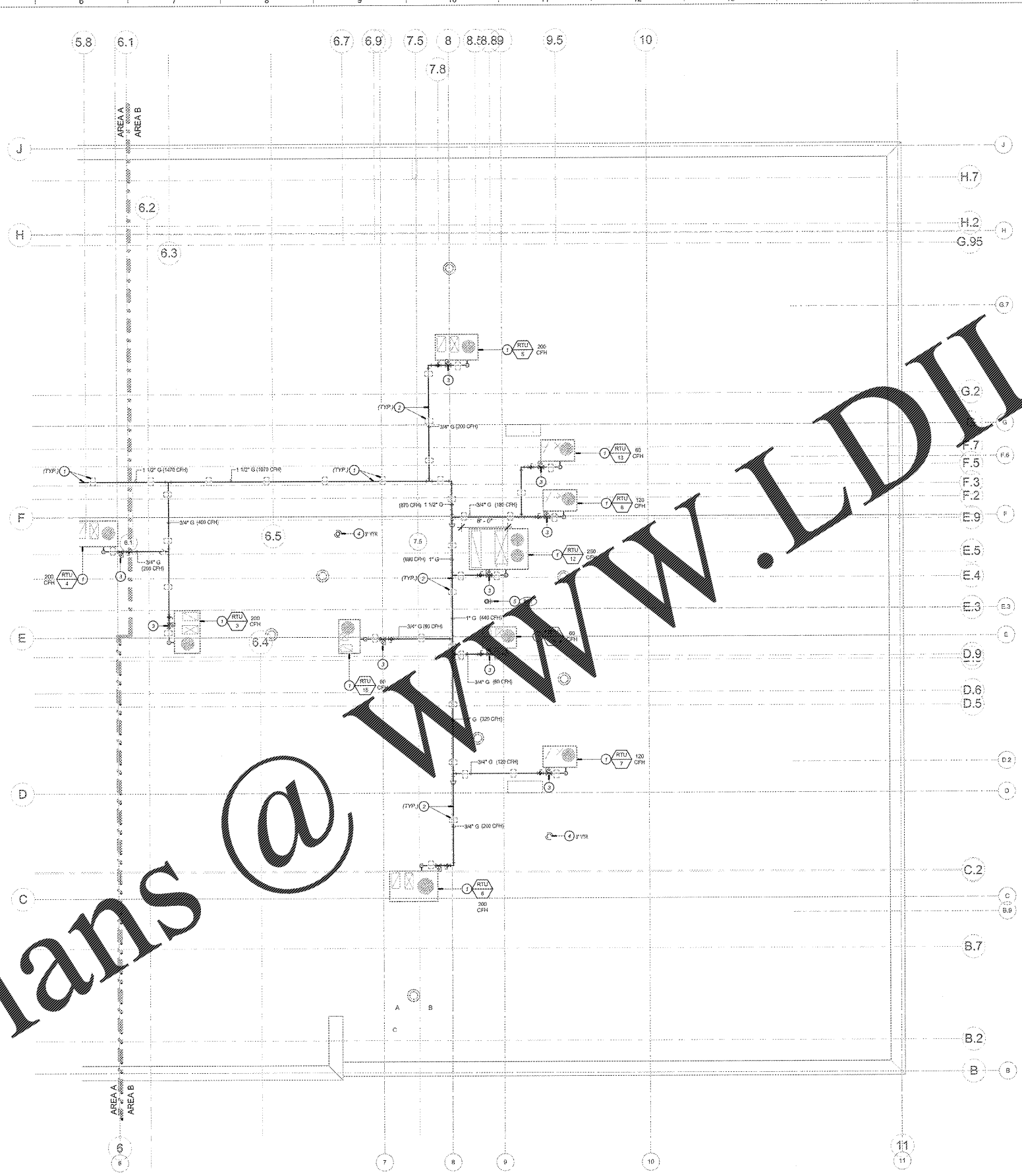
No.	Date	Description

Project Issue Date: \_\_\_\_\_



**SHEET TITLE:**  
 ROOF AREA-B PLBG PLAN

**SHEET NUMBER:**  
 P106



**ROOF AREA B PLUMBING PLAN**  
 1/8" = 1'-0"

THIS DRAWING IS A PART OF AN ENGINEERING OR ARCHITECTURAL CONTRACT DOCUMENT. IT IS TO BE USED ONLY FOR THE PROJECT AND SITE SPECIFICALLY IDENTIFIED IN THE CONTRACT DOCUMENTS. NO PART OF THIS DRAWING IS TO BE REPRODUCED, COPIED, OR TRANSMITTED IN ANY FORM OR BY ANY MEANS, WITHOUT THE WRITTEN PERMISSION OF THE ENGINEER OR ARCHITECT. ANY REUSE OF THIS DRAWING FOR ANY OTHER PROJECT OR SITE IS STRICTLY PROHIBITED. THE ENGINEER OR ARCHITECT ASSUMES NO LIABILITY FOR ANY DAMAGE OR INJURY TO PERSONS OR PROPERTY THAT MAY OCCUR AS A RESULT OF THE USE OF THIS DRAWING. THE ENGINEER OR ARCHITECT ASSUMES NO LIABILITY FOR ANY DAMAGE OR INJURY TO PERSONS OR PROPERTY THAT MAY OCCUR AS A RESULT OF THE USE OF THIS DRAWING.