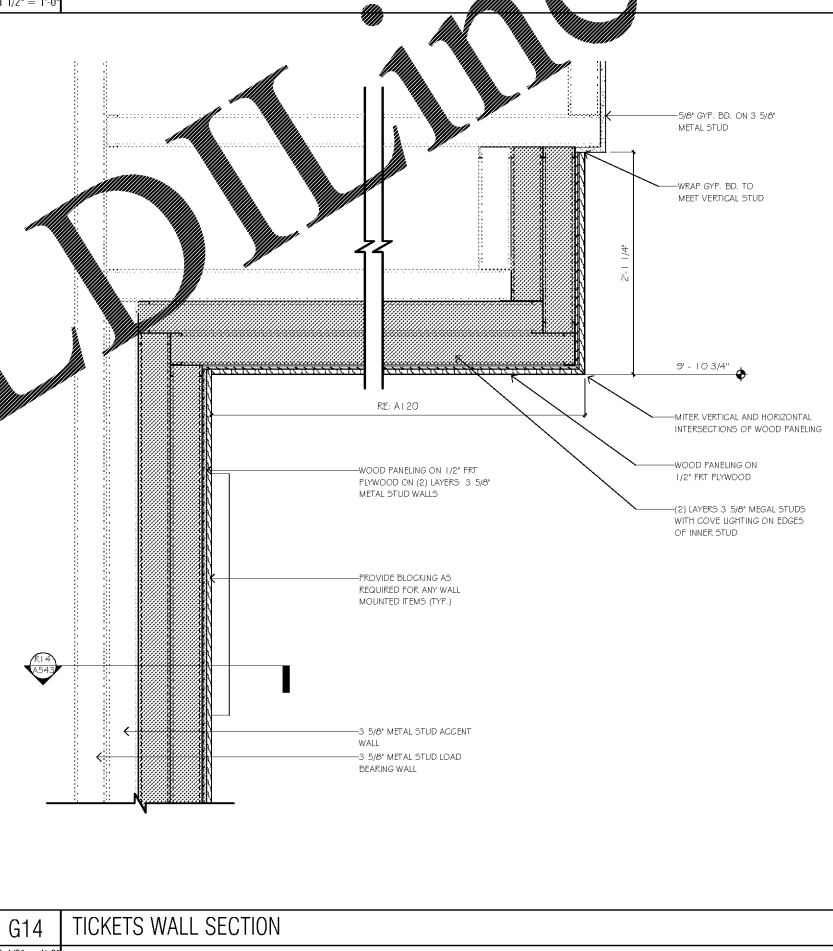
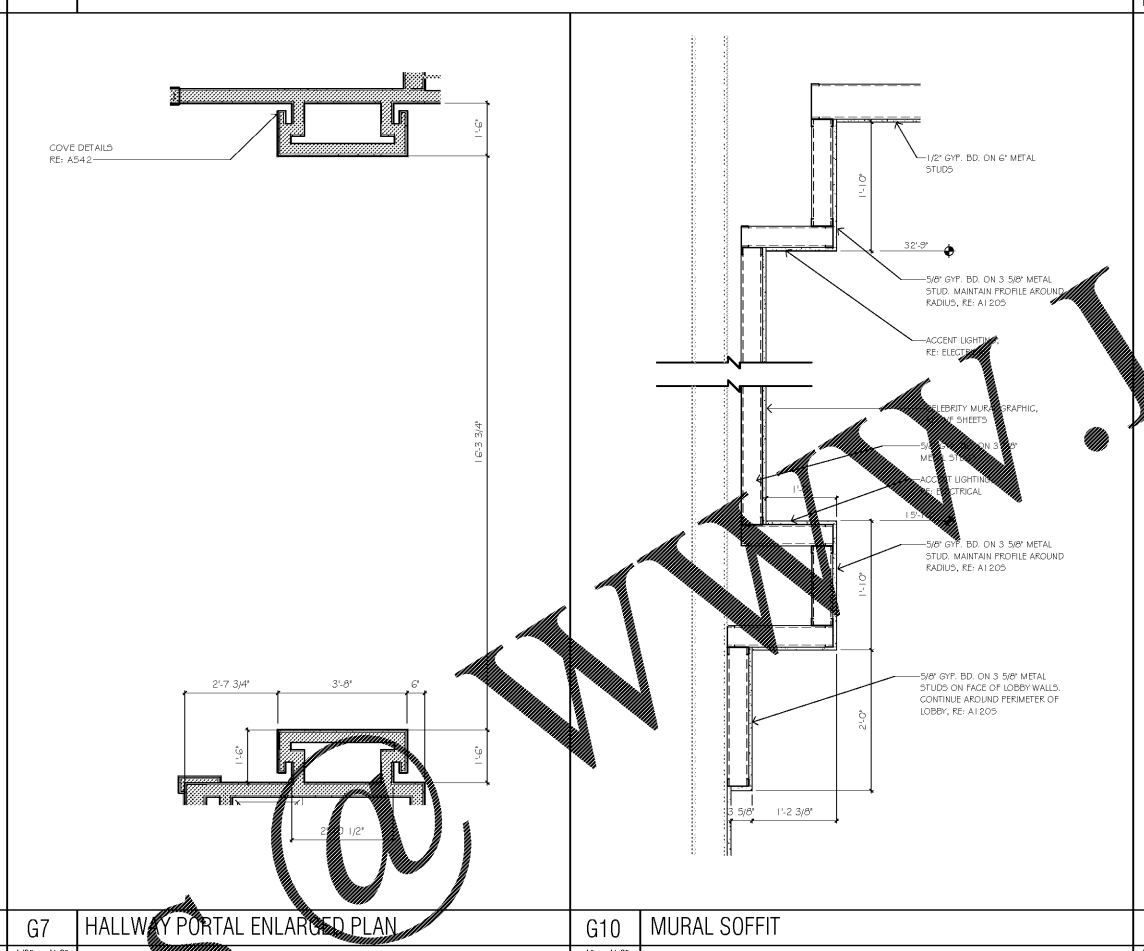
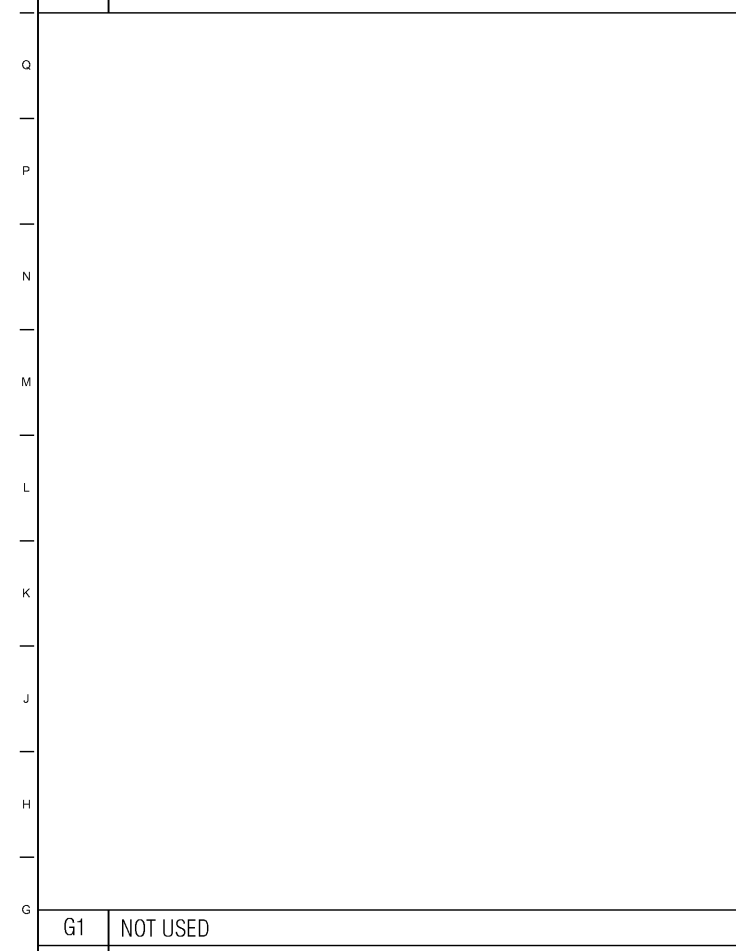


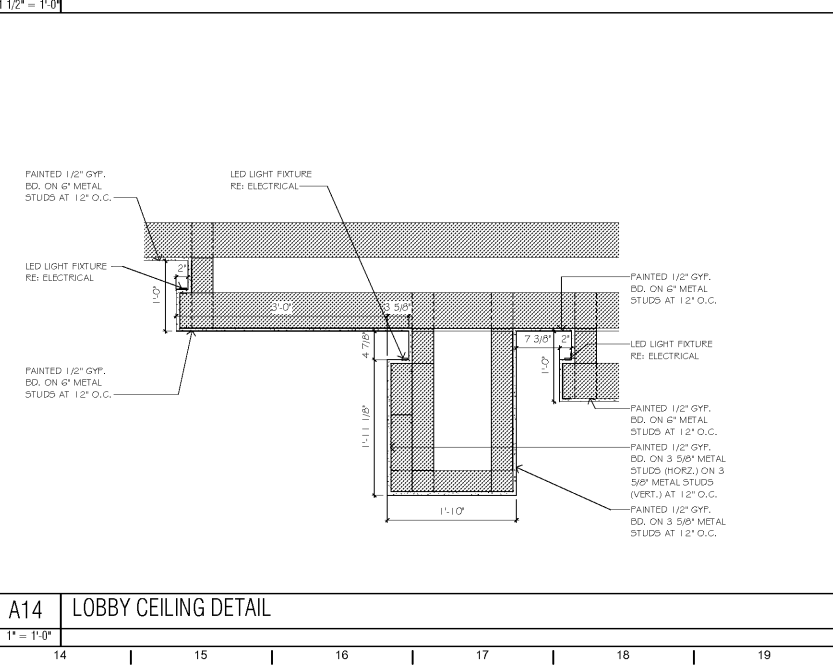
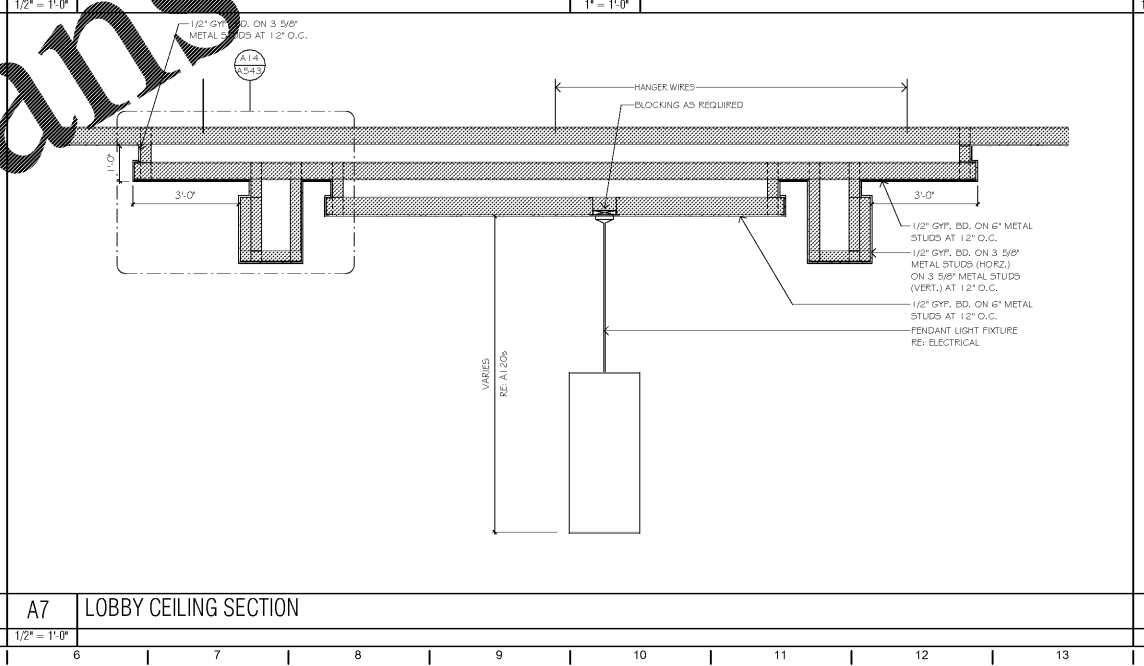
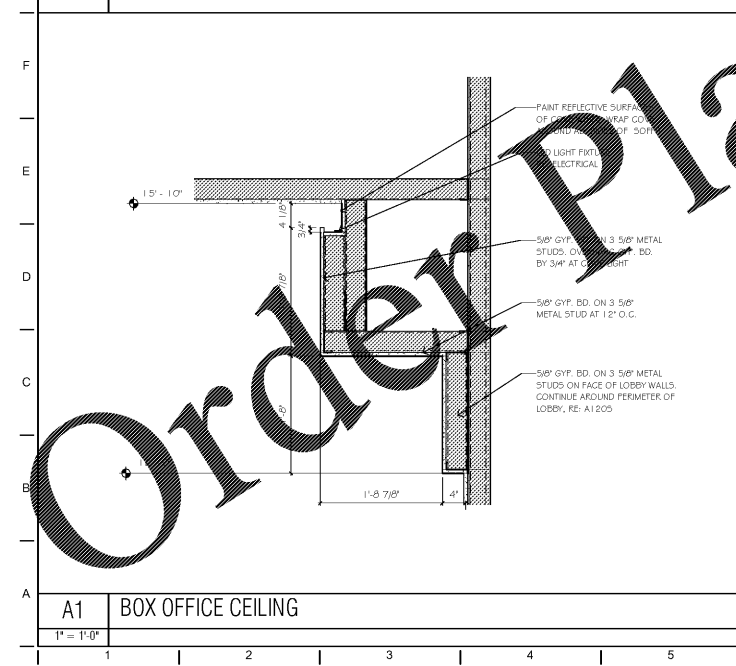
STATE OF GEORGIA
L. L. LUTKE
REGISTERED PROFESSIONAL ARCHITECT
No. 14788
18 West 9th Street, Suite 105
Atlanta, GA 30309
(404) 525-1200
(404) 525-1201



SHEET LEGEND
GENERAL INFORMATION & SCOPE OF WORK
GENERAL NOTES & DETAILS

A1000 FLOOR PLANS & CEILING PLANS
A2000 EXTERIOR & INTERIOR ELEVATIONS
A3000 BUILDING SECTIONS
A4000 EXTERIOR & INTERIOR DETAILS
A5000 FLOOR SCHEDULES, DOOR SCHEDULES, WINDOW SCHEDULES, FINISH SCHEDULES
A6000 AUDITORIUM SEAT LINE SECTIONS

RF STRUCTURAL
ME MECHANICAL
PE ELECTRICAL
WF WATERWAYS DETAILS
EQ EQUIPMENT & EQUIPMENT
PL PL AUDITORIUM



AMC MADISON YARDS 8
AMC NEW BUILD
906 MEMORIAL DR SE
ATLANTA, GA 30316

AMC
American Multi-Cinema, Inc.
One AMC Way
11500 Ash Street
Lawrence, KS 66211
© Copyright 2018 American Multi-Cinema, Inc.

No.	Date	Description

Project Issue Date: 05/22/2018

KEY PLAN:

1	4	5
2	3	8

SHEET TITLE:
MISC. DETAILS

SHEET NUMBER:
A543