

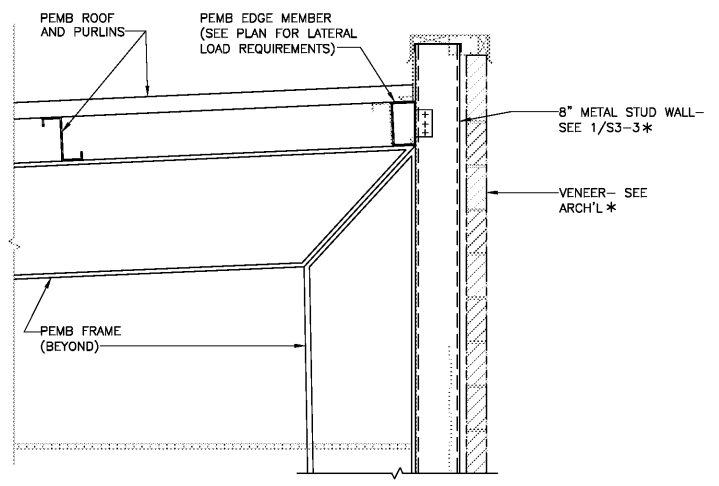


SIGNATURE REQUIRED

SMITH DESIGN GROUP, INC.

2 WEST WALTON STREET  
LAGRANGE, GEORGIA 30240

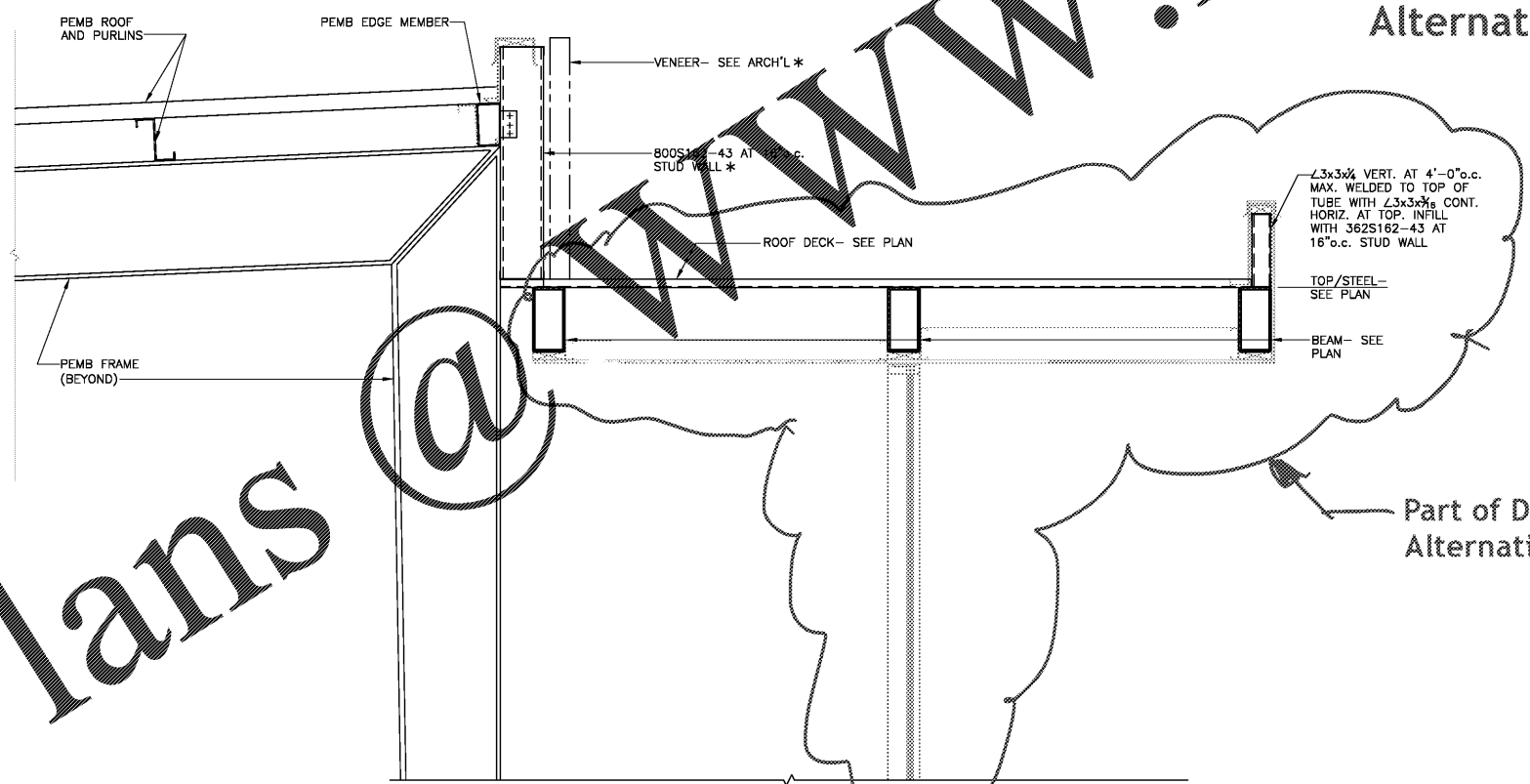
708-882-5511 www.SDGarch.net



SECTION 1  
SCALE: 3/4" = 1'-0" S3-5

\* -SEE 1/S3-3 FOR NOTES REGARDING METAL STUDS VS. GIRTS FOR BASE BID AND ADD ALTERNATES

2 Story Entry Tower and Wing Wall are included in Base Bid and Add. Alternative No. 1 and 2



SECTION 2  
SCALE: 3/4" = 1'-0" S3-5

\* -SEE 1/S3-3 FOR NOTES REGARDING METAL STUDS VS. GIRTS FOR BASE BID AND ADD ALTERNATES

Part of Deductive Alternative No. 1

REVISIONS

Δ	DATE	DESCRIPTION

PROJECT:  
VERNON ROAD FIRE STATION  
VERNON ROAD  
LAGRANGE GEORGIA

TITLE:  
SECTIONS AND DETAILS

MODIFIED DATE:	JOB NO: 1731
ISSUED DATE: FOR BID AND PERMIT 7 MAY 2018	SHEET: S3-5

SBFA JOB # 18034.01  
SHRZER BRUDY FACH ASSOCIATES, INC.  
CONSULTING STRUCTURAL ENGINEERS  
2337 PERIMETER PARK SUITE 215  
ATLANTA, GEORGIA 30341  
PHONE: (770) 455-3404, FAX: (770) 451-1415  
COPYRIGHT © SHRZER BRUDY FACH ASSOCIATES, INC. 2018

Order Plans

WWW.LDILine.com