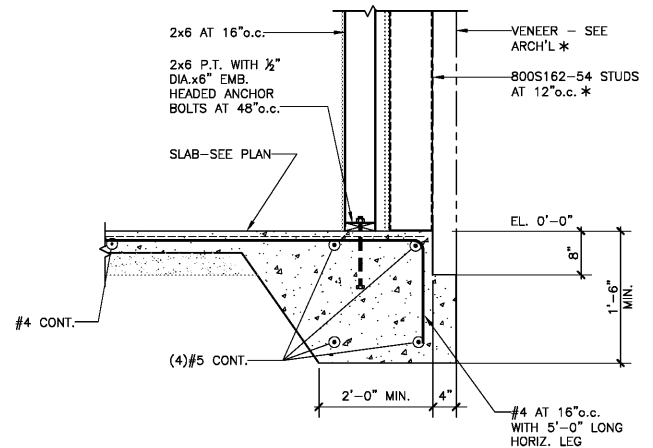




SIGNATURE REQUIRED

SMITH DESIGN GROUP, INC.

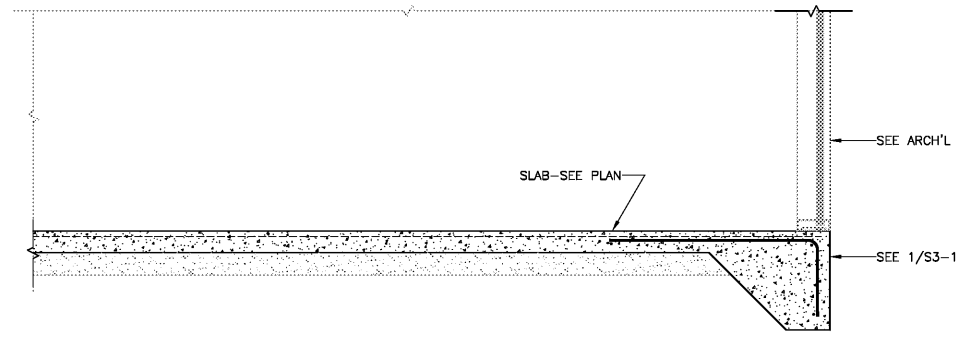
2 WEST WALTON STREET
 LAGRANGE, GEORGIA 30240
 708-882-5511 www.SDGarch.net



SECTION 1

SCALE: 3/4" = 1'-0"

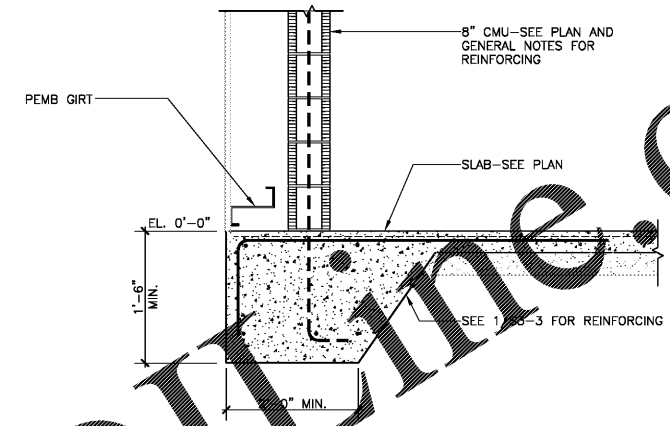
1
S3-3



SECTION 2

SCALE: 3/4" = 1'-0"

2
S3-3



SECTION 3

SCALE: 3/4" = 1'-0"

3
S3-3

* FULL HEIGHT METAL STUDS AS SHOWN REQUIRED AT FULL HEIGHT VENEER ONLY (ADD ALTERNATES 1 AND 2 - SEE ARCH'L). PROVIDE PEMB GIRTS AND 800S162-43 STUDS AT 16" o.c. BEHIND LOW VENEER ONLY FOR BASE BID AND ALTERNATE 1, WHERE APPLICABLE.

REVISIONS	
△	DESCRIPTION

PROJECT:
VERNON ROAD FIRE STATION
 VERNON ROAD
 LAGRANGE GEORGIA

TITLE:
SECTIONS AND DETAILS

MODIFIED DATE:	JOB NO: 1731
ISSUED DATE: FOR BID AND PERMIT 7 MAY 2018	SHEET: S3-3

SBFA JOB # 18034.01
SINZER BRADY FACH ASSOCIATES, INC.
 CONSULTING STRUCTURAL ENGINEERS
 2337 PERIMETER PARK SUITE 215
 ATLANTA, GEORGIA 30341
 PHONE: (770) 455-3404, FAX: (770) 451-1415
 COPYRIGHT © SINZER BRADY FACH ASSOCIATES, INC. 2018

Order Plans @ www.1DilLine.com