

KEYNOTES
 ① 1/2" WATER RESISTANT GYPSUM BOARD CEILING ON 2X6S @ 16" O.C.



SIGNATURE RECEIVED
SMITH DESIGN GROUP, INC.
 206 WEST HAMILTON STREET
 LAGRANGE, GEORGIA 30240
 770-82-5511 www.SDGarch.net

LEGEND

- CEILING FAN LIGHT COMBO
- DECORATIVE PENDANT HUNG FIXTURE
- WALL MOUNTED DECORATIVE LIGHT
- 2X4 LED LAY-IN FIXTURE
- 2X2 LED LAY-IN FIXTURE
- 1X4 LED CEILING MOUNTED FIXTURE
- 8'-0" HANGING LED
- WALL SCONCE EACH SIDE OF MIRROR MOUNT AT 5'-6" A.F.F.; SEE INTERIOR ELEVATIONS
- 4" RECESSED LED CANS ON DIMMER
- 4" RECESSED LED CANS
- 3" LONG UNDER CABINET LIGHTS
- 2'-0" OR 3'-0" WALL MOUNTED LIGHT IN CLOSET AREAS ABOVE DOOR
- 2X2' LAY-IN CEILING AND GRID
- CEILING OCCUPANCY SENSOR SWITCH
- WALL OCCUPANCY SENSOR SWITCH
- RATED WALL - EXTEND TIGHT AGAINST FLOOR OR ROOF DECK ABOVE. SEAL ALL PENETRATIONS.

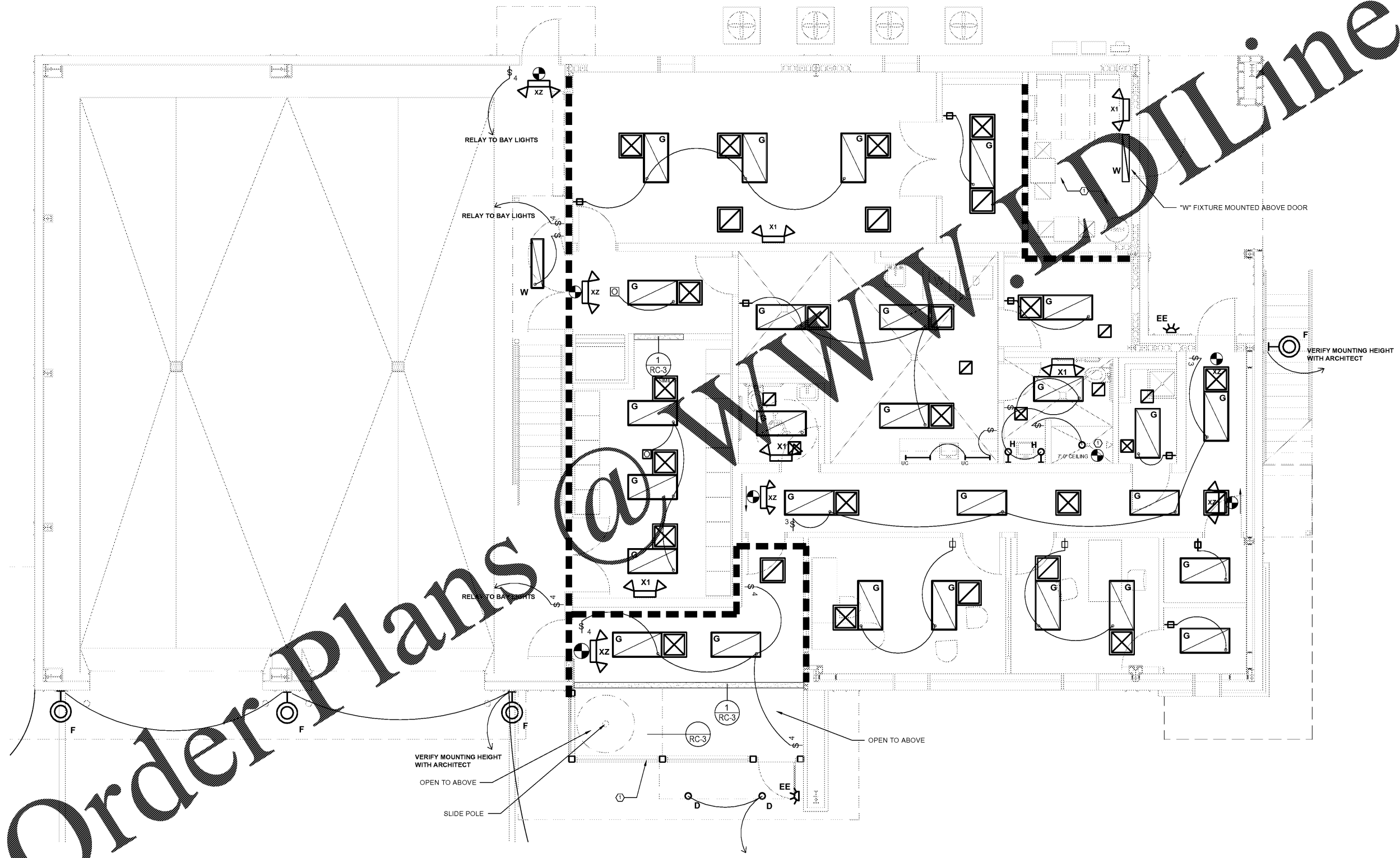
REVISIONS

DATE	DESCRIPTION

PROJECT:
VERNON ROAD FIRE STATION
 VERNON ROAD
 LAGRANGE GEORGIA

TITLE:
FIRST FLOOR ELECTRICAL LIGHTING PLAN

MODIFIED DATE:	JOB NO: 1731
ISSUED DATE: FOR BID AND PERMIT 07 MAY 2018	SHEET: E-6



1 FIRST FLOOR ELECTRICAL LIGHTING PLAN
 E-6 SCALE: 1/4" = 1'-0"

