

KEYNOTES

- ① WHERE DUCTWORK 10"Ø AND SMALLER PENETRATES (1) ONE HOUR RATED PARTITION, EXTEND SHEET METAL DUCT A MINIMUM OF 5'-0" BOTH SIDES OF THE PARTITION, OR INSTALL FIRE DAMPER.
- ② SIDEWALL SUPPLY GRILLES. BOTTOM ELEVATION ±8'-4"
- ③ 1-1/2 TON WALL MOUNTED HEAT PUMP WITH COOLING AND HEAT IN SERVER ROOM. (ALL ELECTRIC)
- ④ PROVIDE AND INSTALL GUARDIAN MODEL G300-B AUTOMATIC RESIDENTIAL FIRE SUPPRESSION SYSTEM W/ ELECTRIC SHUT-OFF & INTERCONNECT CABLE IN RESIDENTIAL 36" WIDE UNVENTED HOOD.
- ⑤ 1" GAS DOWN WALL TO HOT WATER HEATER ON FIRST FLOOR.
- ⑥ GAS FLUE VENT UP THROUGH ROOF FOR HOT WATER HEATER.
- ⑦ 4" SHEET METAL PIPE WITH NO FASTENERS TO WALL CAP FOR DRYER VENT. MOUNT AT 12" A.F.F.

ARCHITECT'S STAMP

SIGNATURE REQUIRED

SMITH DESIGN GROUP, INC.
 20 WEST JACKSON STREET
 LAGRANGE, GEORGIA 30240
 706-882-5511 www.SDGarch.net

- LEGEND**
- 4"Ø RECESSED CAN LIGHT, INTERIOR
 - 5"Ø RECESSED CAN LIGHT, EXTERIOR
 - PENDANT LIGHT
 - 2X2 LAY-IN CEILING & GRID, ARMSTRONG 704-A W/ REVEAL EDGE
 - ⊠ EXHAUST FAN ON SWITCH VENTED OUT TO ROOF. (EXACT LOCATION AND SIDE BY MECHANICAL CONTRACTOR) TO CFM OF EXHAUST UNLESS OTHERWISE NOTED.
 - ⊠ SUPPLY (EXACT LOCATION AND SIZE BY MECHANICAL CONTRACTOR)
 - ⊠ RETURN (EXACT LOCATION AND SIZE BY MECHANICAL CONTRACTOR)
 - ▬ RATED WALL - EXTEND TIGHT AGAINST FLOOR OR ROOF DECK ABOVE. SEAL ALL PENETRATIONS.
 - ⊠ 24"X24" LAY-IN SUPPLY GRILLE
 - CO / CO2 COMBINATION CO AND CO2 SENSOR MOUNTED ON WALL @ 5'-0" A.F.F. (TYPICAL FOR 2) FOR CONTROL OF APPARATUS BAY VENTILATION SYSTEM. SEE SPECIFICATIONS.
 - ⊙ FLUSH MOUNTED SPEAKER

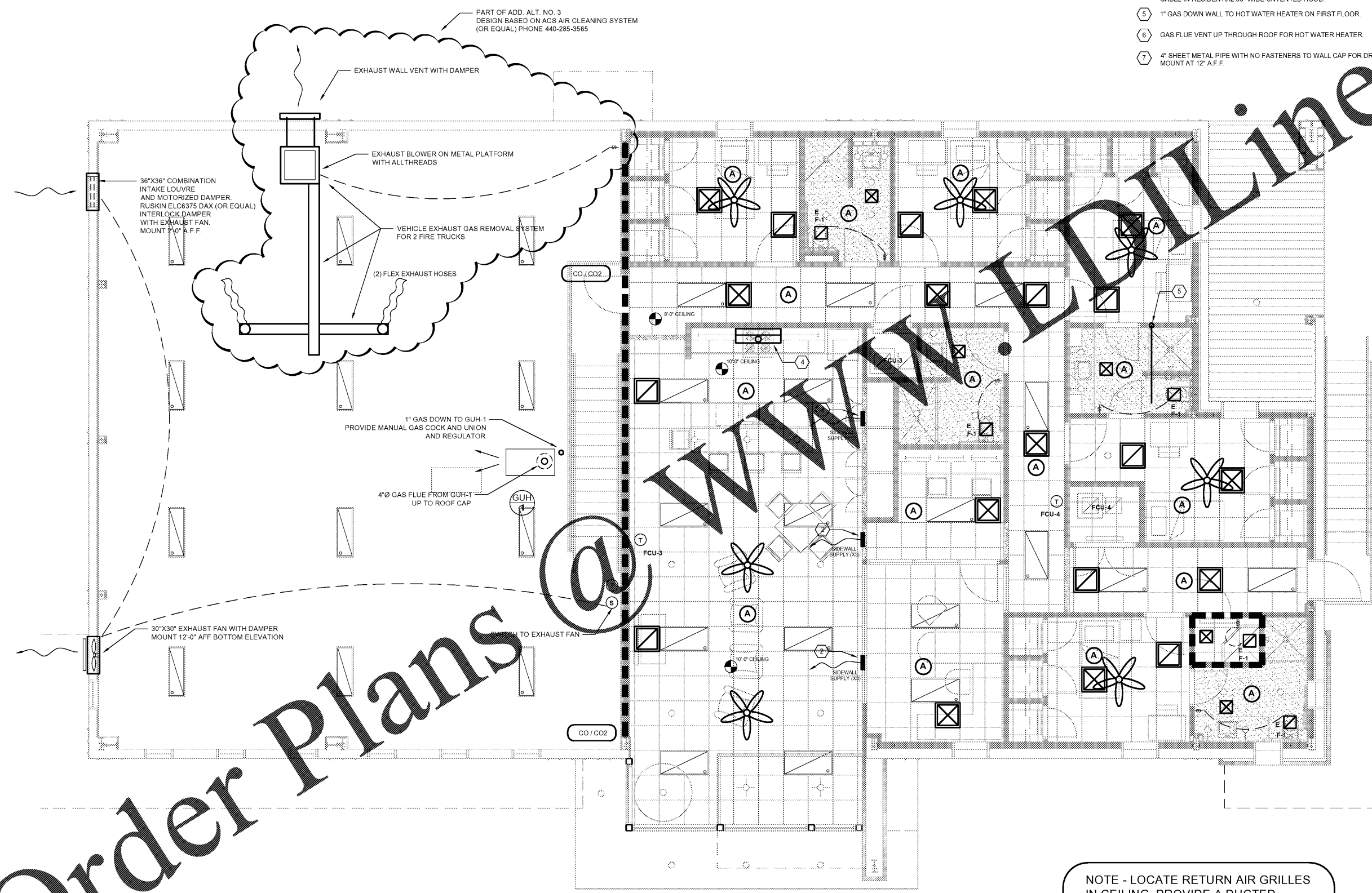
REVISIONS

Δ	DATE	DESCRIPTION

PROJECT:
VERNON ROAD FIRE STATION
 VERNON ROAD
 LAGRANGE GEORGIA

TITLE:
MECHANICAL PLAN - SECOND FLOOR

MODIFIED DATE:	JOB NO: 1731
ISSUED DATE: FOR BID AND PERMIT 07 MAY 2018	SHEET: M-3



NOTE - LOCATE RETURN AIR GRILLES IN CEILING, PROVIDE A DUCTED RETURN SYSTEM. MAXIMUM HEIGHT OF RETURN DUCT ON FIRST FLOOR IS 10'-0"

1 MECHANICAL PLAN - SECOND FLOOR
 SCALE: 1/4" = 1'-0"

Order Plans @