

ELECTRIC SPLIT SYSTEM HEAT PUMPS SEER 16 MINIMUM. PROVIDE WITH DUCTED OUTSIDE AIR AS REQUIRED BY CODE TO MIX WITH RETURN AIR.

- KEYNOTES**
- WHERE DUCTWORK 10"Ø AND SMALLER PENETRATES (1) ONE HOUR RATED PARTITION, EXTEND SHEET METAL DUCT A MINIMUM OF 5'-0" BOTH SIDES OF THE PARTITION, OR INSTALL FIRE DAMPER.
  - SIDEWALL SUPPLY GRILLES. BOTTOM ELEVATION ±8'-4"
  - 1-1/2 TON WALL MOUNTED HEAT PUMP WITH COOLING AND HEAT IN SERVER ROOM. (ALL ELECTRIC)
  - PROVIDE AND INSTALL GUARDIAN MODEL G300-B AUTOMATIC RESIDENTIAL FIRE SUPPRESSION SYSTEM W/ ELECTRIC SHUT-OFF & INTERCONNECT CABLE IN RESIDENTIAL 36" WIDE UNVENTED HOOD.
  - 1" GAS DOWN WALL TO HOT WATER HEATER ON FIRST FLOOR.
  - GAS FLUE VENT UP THROUGH ROOF FOR HOT WATER HEATER.
  - 4" SHEET METAL PIPE WITH NO FASTENERS TO WALL CAP FOR DRYER VENT MOUNT AT 12' A.F.F.

ARCHITECT'S STAMP

SIGNATURE REQUIRED

**SMITH DESIGN GROUP, INC.**  
 20 WEST JOHNSON STREET  
 LAGRANGE, GEORGIA 30240  
 706-882-5511 www.SDGarch.net

- LEGEND**
- 4"Ø RECESSED CAN LIGHT, INTERIOR
  - 5"Ø RECESSED CAN LIGHT, EXTERIOR
  - PENDANT LIGHT
  - ▤ 2X2 LAY-IN CEILING & GRID, ARMSTRONG 704-A W/ REVEAL EDGE
  - ⊠ EXHAUST FAN ON SWITCH VENTED OUT TO ROOF. (EXACT LOCATION AND SIDE BY MECHANICAL CONTRACTOR) 70 CFM OF EXHAUST UNLESS OTHERWISE NOTED.
  - ⊠ SUPPLY (EXACT LOCATION AND SIZE BY MECHANICAL CONTRACTOR)
  - ⊠ RETURN (EXACT LOCATION AND SIZE BY MECHANICAL CONTRACTOR)
  - ▬ RATED WALL - EXTEND TIGHT AGAINST FLOOR OR ROOF DECK ABOVE. SEAL ALL PENETRATIONS.
  - ▤ 24"X24" LAY-IN SUPPLY GRILLE
  - CO/CO2 COMBINATION CO AND CO2 SENSOR MOUNTED ON WALL @ 5'-0" A.F.F. (TYPICAL FOR 2) FOR CONTROL OF APPARATUS BAY VENTILATION SYSTEM. SEE SPECIFICATIONS.
  - ⊠ FLUSH MOUNTED SPEAKER

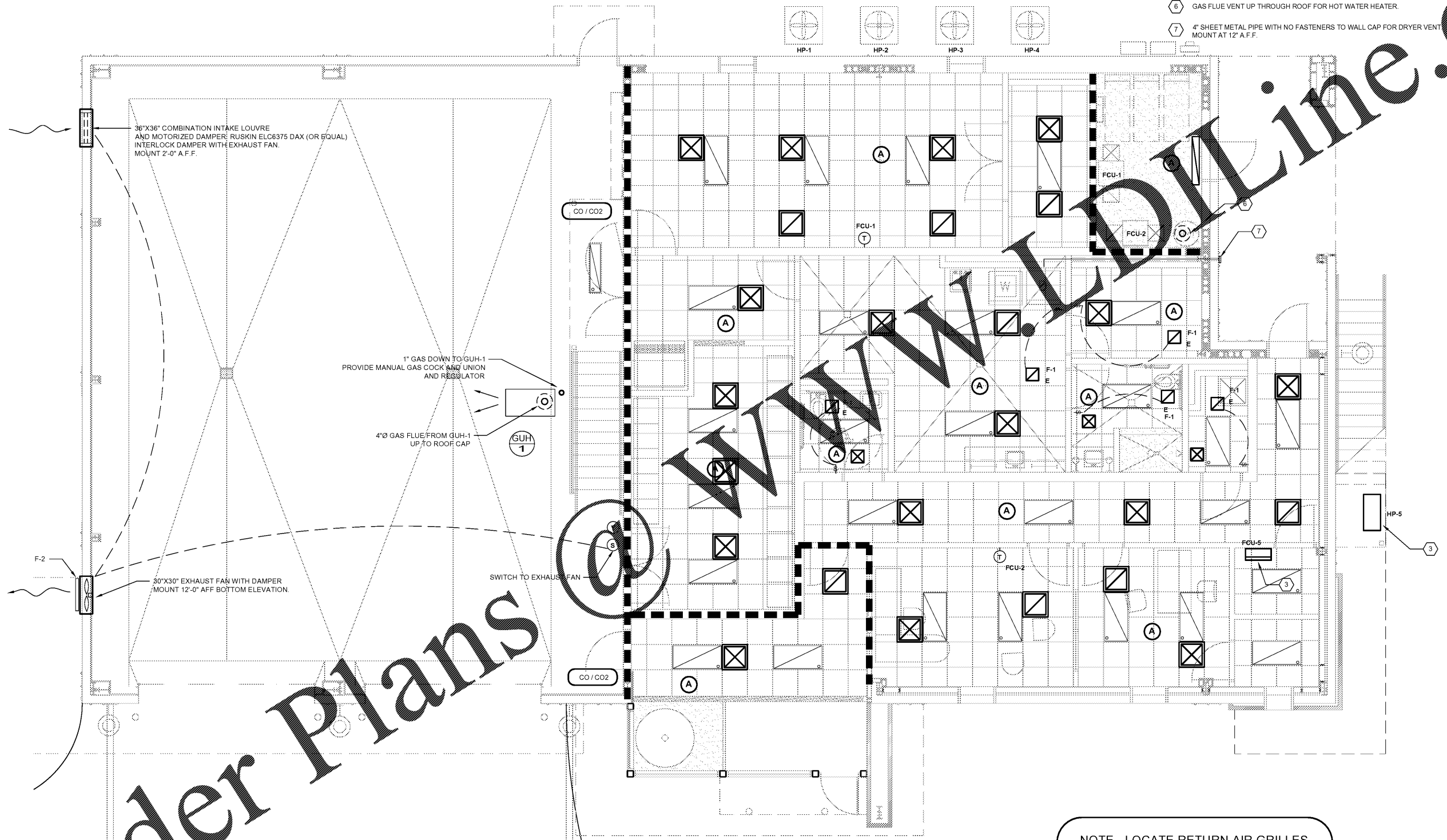
**REVISIONS**

DATE	DESCRIPTION

PROJECT:  
**VERNON ROAD FIRE STATION**  
 VERNON ROAD  
 LAGRANGE GEORGIA

TITLE:  
**MECHANICAL PLAN  
 FIRST FLOOR**

MODIFIED DATE:	JOB NO: <b>1731</b>
ISSUED DATE: FOR BID AND PERMIT 07 MAY 2018	SHEET: <b>M-2</b>



NOTE - LOCATE RETURN AIR GRILLES IN CEILING, PROVIDE A DUCTED RETURN SYSTEM. MAXIMUM HEIGHT OF RETURN DUCTS AT FIRST FLOOR IS 10".

NOTE - MAXIMUM HEIGHT OF SUPPLY DUCTS AT FIRST FLOOR IS 10".

**MECHANICAL PLAN - FIRST FLOOR**  
 SCALE: 1/4" = 1'-0"

**Order Plans**