

KEYNOTES  
 ① 1/2" WATER RESISTANT GYPSUM BOARD CEILING ON 2X6'S @ 16" O.C.

ARCHITECT'S STAMP



SIGNATURE REQUIRED  
 SMITH DESIGN GROUP, INC.

206 WEST HAMILTON STREET  
 LAGRANGE, GEORGIA 30240  
 770-82-5511 www.SDGarch.net

LEGEND

- CEILING FAN LIGHT COMBO
- DECORATIVE PENDANT HUNG FIXTURE
- WALL MOUNTED DECORATIVE LIGHT
- 2X4 LED LAY-IN FIXTURE
- 2X4 LED LAY-IN MOUNTED FIXTURE
- 
- WALL SCONCE EACH SIDE OF MIRROR MOUNT AT 5'-6" A.F.F. SEE INTERIOR ELEVATIONS
- 
- 
- 
- 2X2 LAY-IN CEILING AND GRID
- FLUSH MOUNTED SPEAKER (CEILING MOUNT) SEE REFLECTED CEILING PLAN.
- RATED WALL - EXTEND TIGHT AGAINST FLOOR OR ROOF DECK ABOVE. SEAL ALL PENETRATIONS.

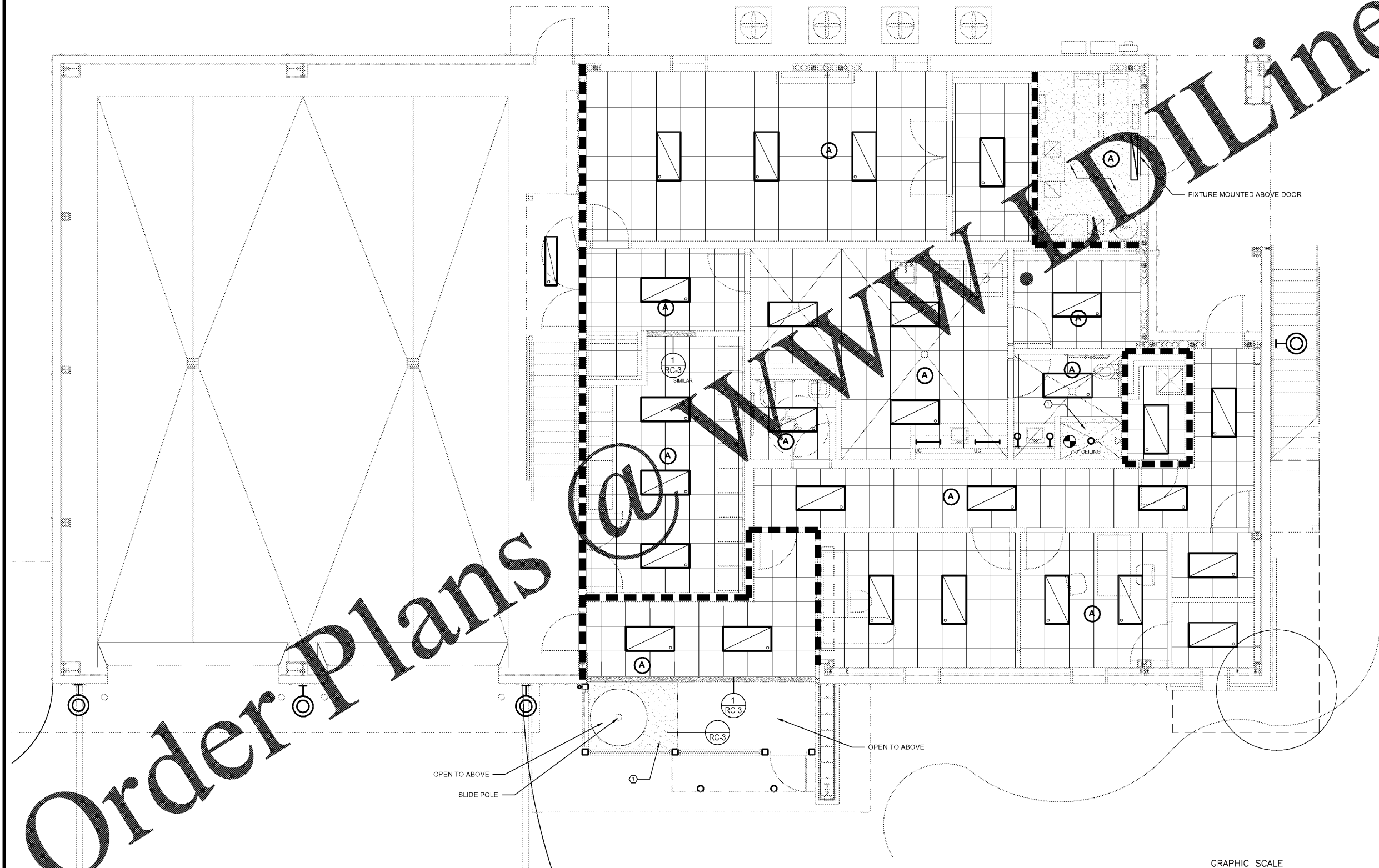
REVISIONS

DATE	DESCRIPTION

PROJECT:  
 VERNON ROAD FIRE STATION  
 VERNON ROAD  
 LAGRANGE GEORGIA

TITLE:  
 FIRST FLOOR PLAN  
 REFLECTED CEILING PLAN

MODIFIED DATE:	JOB NO: 1731
ISSUED DATE: FOR BID AND PERMIT 07 MAY 2018	SHEET: RC-1



1 RC-1 FIRST FLOOR REFLECTED CEILING PLAN  
 SCALE: 1/4" = 1'-0"



Order Plans @ WWW.LDLine.com