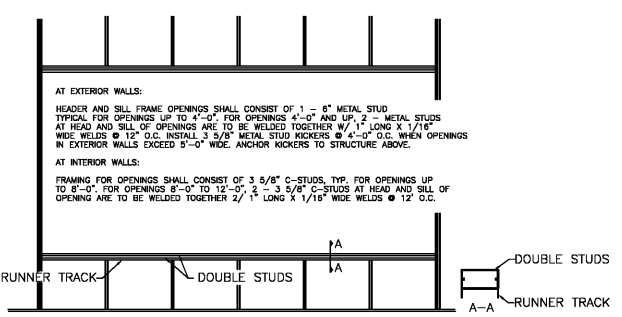
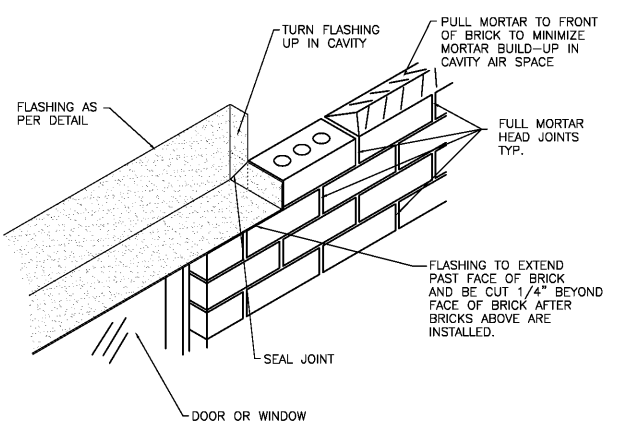


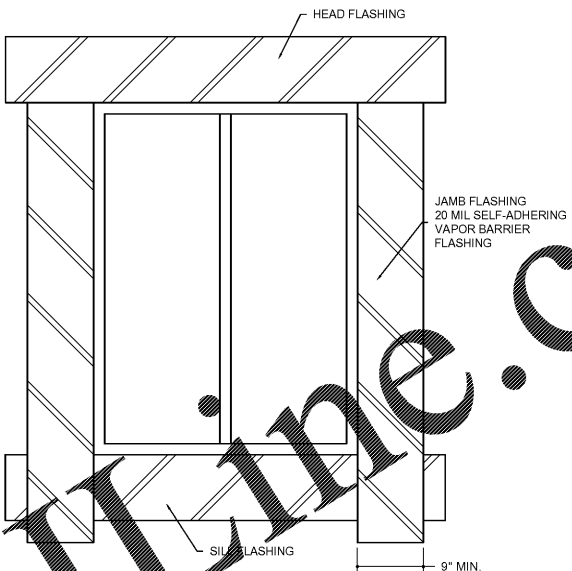
1 EXTERIOR WALL CONSTRUCTION
SCALE: 3/4" = 1'-0"



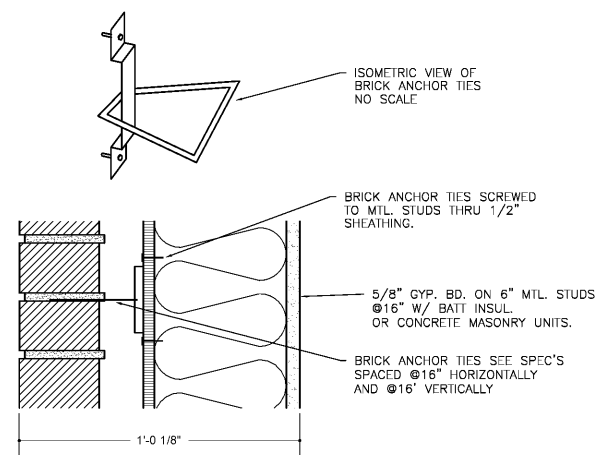
2 FRAMED OPENINGS
SCALE: 3/4" = 1'-0"



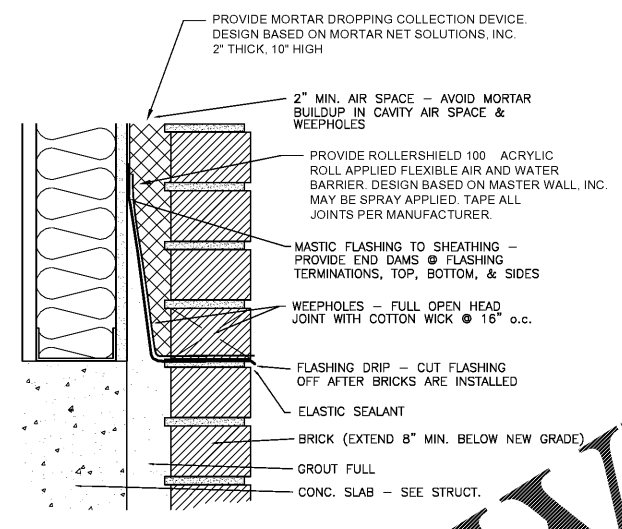
3 BRICK FLASHING
SCALE: 3/4" = 1'-0"



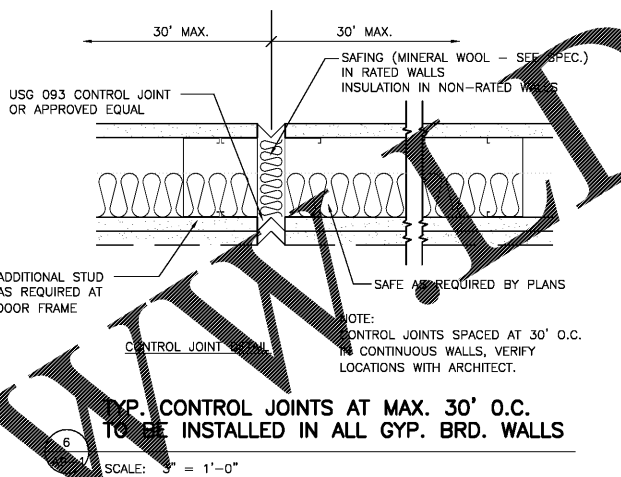
4 EXTERIOR WINDOW AND DOOR PENETRATION FLASHING
SCALE: 3/4" = 1'-0"



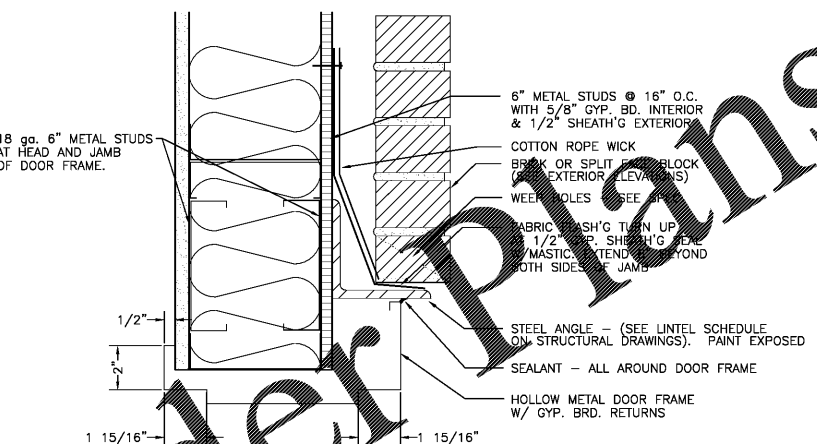
4 BRICK ANCHOR
SCALE: 3/4" = 1'-0"



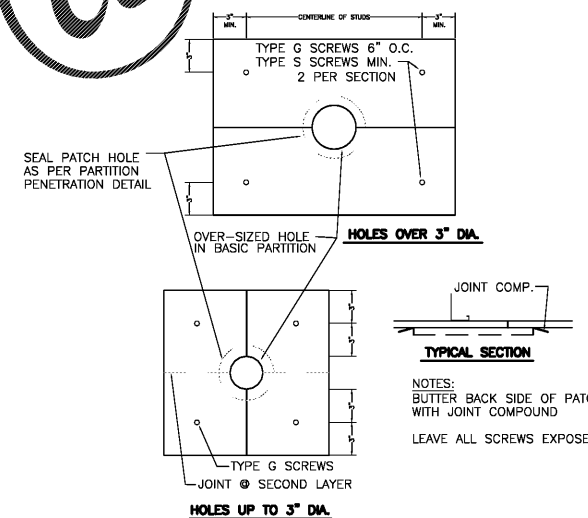
5 BRICK FLASHING
SCALE: 3/4" = 1'-0"



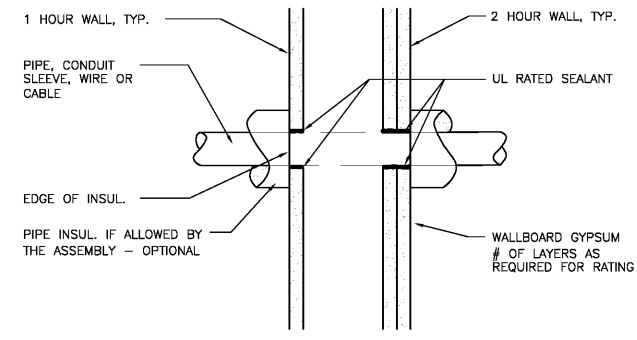
6 CONTROL JOINTS AT MAX. 30' O.C. TO BE INSTALLED IN ALL GYP. BRD. WALLS
SCALE: 3/4" = 1'-0"



10 EXTERIOR HEAD - HOLLOW METAL FRAME
SCALE: 3/4" = 1'-0"



11 BLOW-OUT PATCH
SCALE: 1-1/2" = 1'-0"



7 GENERIC RATED WALL PENETRATION
SCALE: 3/4" = 1'-0" SIMILAR TO U.L. #WL1001

ARCHITECT'S STAMP
STATE OF GEORGIA
7575
REGISTERED ARCHITECT
SIGNATURE REQUIRED
SMITH DESIGN GROUP, INC.
20 WEST HUNTERSON STREET
LAGRANGE, GEORGIA 30240
706-882-5511 www.SDGarch.net

REVISIONS	
DATE	DESCRIPTION

PROJECT:
VERNON ROAD FIRE STATION
VERNON ROAD
LAGRANGE GEORGIA

TITLE:
DETAILS

MODIFIED DATE:	JOB NO: 1731
ISSUED DATE: FOR BID AND PERMIT 07 MAY 2018	SHEET: A9-1

Order Plans @