

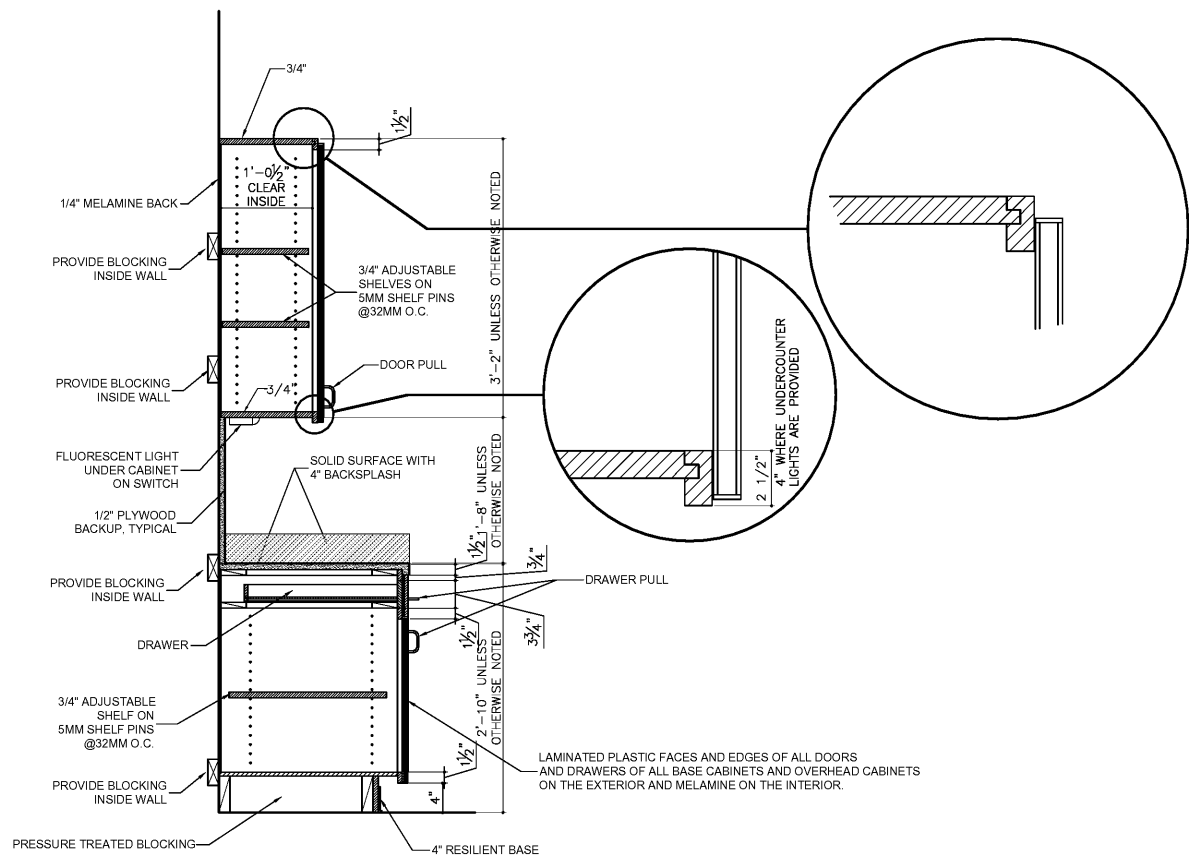


SMITH DESIGN GROUP, INC.

200 WEST WILSON STREET
 LAWRENCEVILLE, GEORGIA 30240
 770-882-5511 www.SDGarch.net

GENERAL NOTES - CABINET CONSTRUCTION

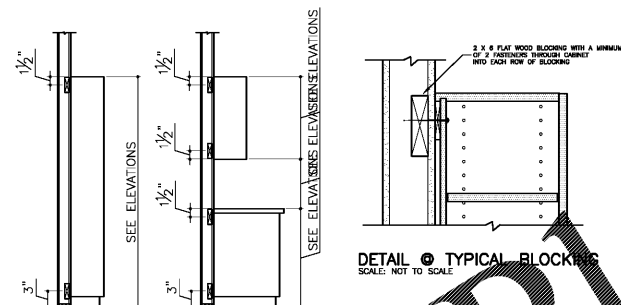
- ALL CABINETS TO HAVE PLASTIC LAMINATE EXTERIORS WITH MELAMINE INTERIORS.
- ALL CABINETS TO BE CONSTRUCTED FOLLOWING AWI QUALITY STANDARDS.
- ALL TOE BOARDS TO BE PRESSURE TREATED.
- ALL CABINET BODY MEMBERS TO BE 3/4" MELAMINE BACKS TO BE 1/4" MELAMINE.
- ALL ADJUSTABLE SHELVES TO BE 3/4" MELAMINE WITH MATCHING PVC EDGE BANDING ON 5 MM SHELF PINS @ 32MM O.C.
- CABINET HARDWARE:
 A: DOOR AND DRAWER PULLS
 WIRE PULLS NO. 484 STANLEY HARDWARE
 B: HINGES 2 PER LEAF
 NO. 3703V58 SELF CLOSING, DOWELED HINGE CUP, BY G GRASS
 C: DRAWER GUIDES
 NO. 6500 G GRASS
 D: SHELF PINS
 5 MM DIA., 24 MM LONG, NICKEL PLATED, SPACED @ 32 MM O.C.
- ALL RETRACTABLE KEYBOARDS TO BE BASED ON KNAPE AND VOGT. PHONE (800) 253-1561, KEYNETIX FULLY ADJUSTABLE KEYBOARD SYSTEM WITH AMBIDEXTROUS UNDER SWIVEL MOUSE TRAY.



TYPICAL CABINET SECTION

SCALE: 1" = 1'-0"

IN-WALL BLOCKING IS TO BE PROVIDED AND INSTALLED BY THE GENERAL CONTRACTOR. IN-WALL BLOCKING IS REQUIRED IN ORDER TO ACHIEVE A SAFE, SECURE INSTALLATION AND ALLOW FOR A CONSISTENT PLACEMENT OF FASTENERS IN THE CABINET BACKS. THIS IS PARTICULARLY NOTICABLE IN OPEN CABINETS (CABINETS WITHOUT DOORS). THE HEIGHT REQUIREMENTS OF THE BLOCKING ARE SHOWN BELOW. PLEASE REFER TO THE CASEWORK SHOP DRAWINGS OF ARCHITECTS DRAWINGS FOR HORIZONTAL DIMENSIONAL REQUIREMENTS.



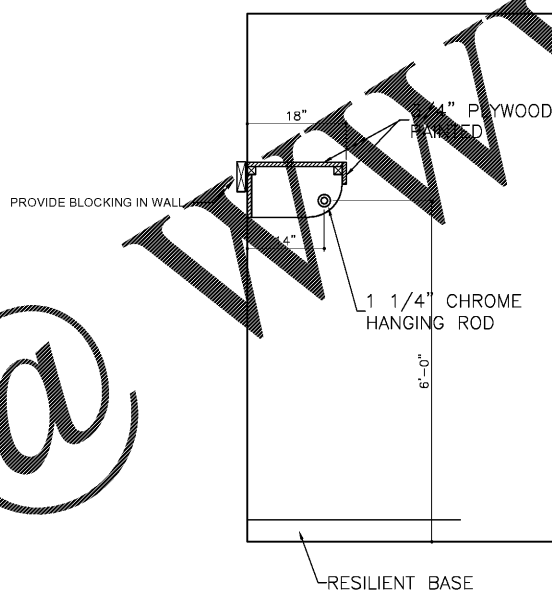
BLOCKING REQUIREMENTS OF GENERAL CONTRACTOR

TYPICAL CASEWORK NOTES - A.W.I. CUSTOM GRADE:

- ALL SEMI-EXPOSED SURFACES ARE WHITE MELAMINE ON PARTICLE BOARD CORE.
- ALL SEMI-EXPOSED DRAWER FRONTS ARE WHITE MELAMINE ON PARTICLE BOARD CORE.
- ALL SEMI-EXPOSED BODY & SHELF FRONT EDGES ARE WHITE .020 PVC.
- ALL EXPOSED SURFACES ARE VERTICAL GRADE PLASTIC LAMINATE ON PARTICLE BOARD CORE. INDICATE COLOR IN NOTE 2 BELOW.
- ALL EXPOSED DOOR, DOOR & DRAWER FRONTS EDGES ARE .020 PVC FINISHING CASEWORK COLOR OR CONTRASTING COLOR. IF CONTRASTING COLOR IS DESIRED, INDICATE COLOR IN NOTE 2 BELOW.
- ALL TOP SPLASH EDGES ARE HORIZONTAL GRADE PLASTIC LAMINATE ON 3/4" PARTICLE BOARD CORE (3/4" VENEER CORE PLYWOOD TOPS WHICH SINKS OCCUR). INDICATE COLOR IN NOTE 2 BELOW.
- ALL TOE BOARDS ARE 3/4" PRESSURE TREATED.
- SEE SHEET A8-2 FOR PROPOSED HARDWARE.

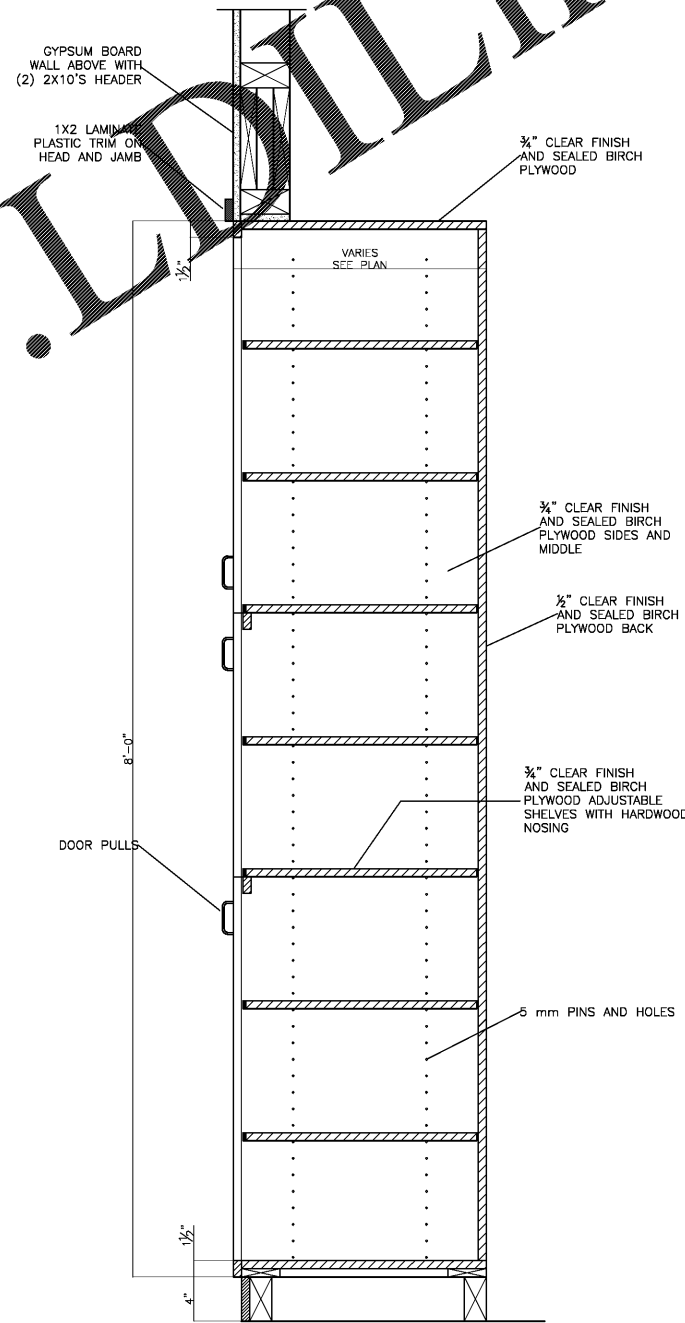
CASEWORK COLORS - SELECT FROM WILSONART OR NEWMAR BRANDS:

- (ARCHITECT/DESIGNER MUST INDICATE COLORS.)
- EXPOSED SURFACES OF CASES: _____
 - TOPS, SPLASHES AND EDGES: _____
 - CONTRASTING CASE BODY, DOOR & DRAWER FRONT EDGES: _____



TYPICAL CLOSET HANGER

NOT TO SCALE
 PROVIDE FULL LENGTH IN CLOSETS
 SPACE 203 A, B, AND C
 SPACE 203 A, B, AND C
 SPACE 209 A, B, AND C
 SPACE 212 A, B, AND C
 SPACE 213 A, B, AND C
 SPACE 217 A, B, AND C
 SPACE 105



SECTION

SCALE: 1/2" = 1'-0"

REVISIONS

| DATE | DESCRIPTION |
|------|-------------|
| | |
| | |
| | |
| | |
| | |

PROJECT:
 VERNON ROAD FIRE STATION
 VERNON ROAD
 LAGRANGE GEORGIA

TITLE:
 CABINETS DETAILS

| | |
|---|-----------------|
| MODIFIED DATE: | JOB NO: 1731 |
| ISSUED DATE: FOR BID AND PERMIT 07 MAY 2018 | SHEET: A8-2 |