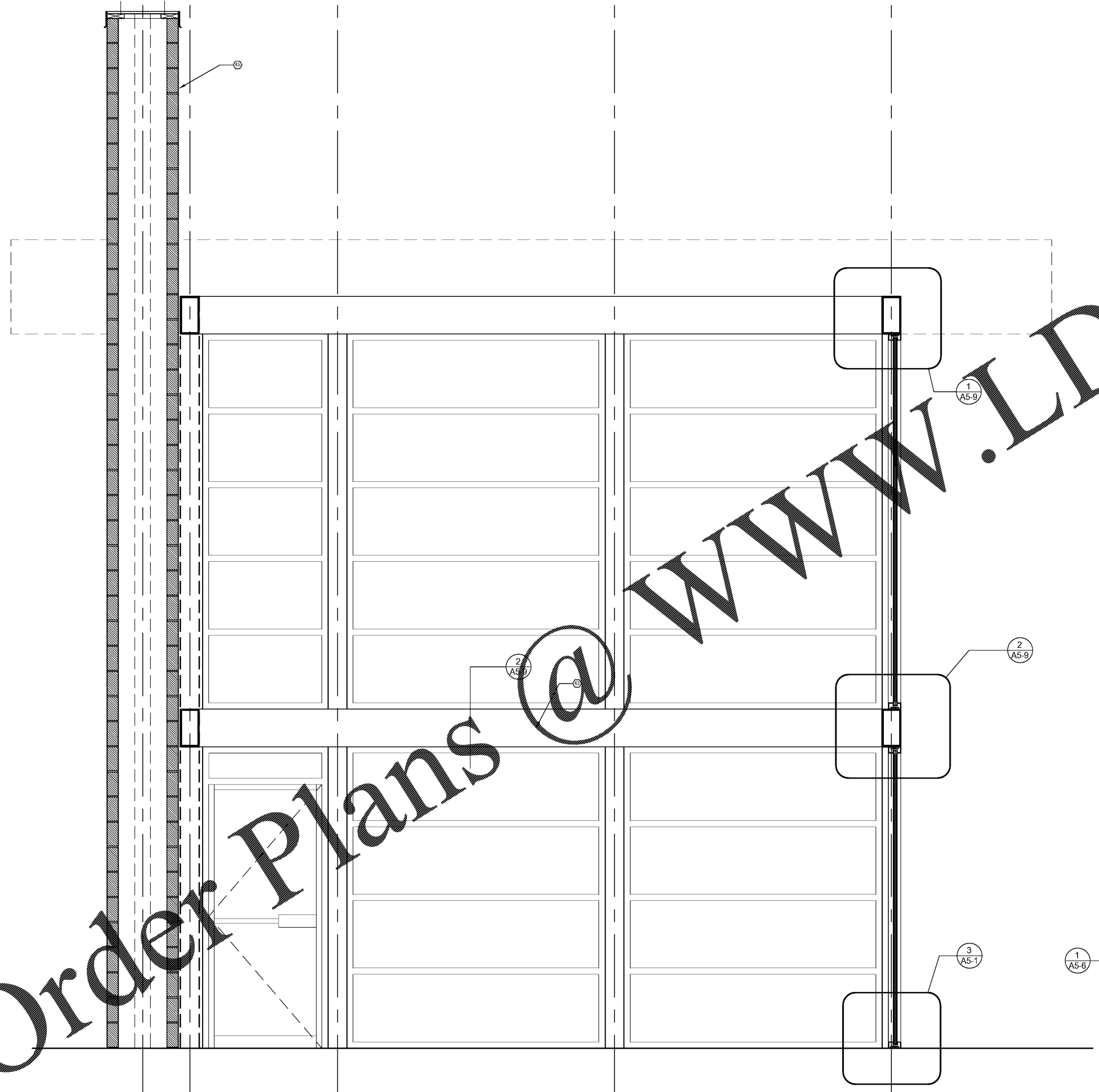




SMITH DESIGN GROUP, INC.
 200 WEST WILKINSON STREET
 LAGRANGE, GEORGIA 30240
 706-882-5511 www.SDGarch.net

- KEYNOTES**
- 1 SPLIT FACE BLOCK
 - 2 BRICK VENEER
 - 3 ALUMINUM STOREFRONT DOORS
 - 4 ALUMINUM AWNING. SEE DETAILS ON SHEET AS-2
 - 5 METAL WALL PANEL BY PEMB
 - 6 FLAT METAL WALL PANEL BY PEMB
 - 7 METAL COPING
 - 8 CAST STONE SLOPING SILL WITH METAL FLASHING
 - 9 TUBE STEEL. SEE STRUCTURAL DRAWINGS
 - 10 STOCK ALUMINUM AWNING SYSTEM
 - 11 NEW GRADE
 - 12 PEMB SIDING
 - 13 3/8" METAL STUDS @ 16" O.C.
 - 14 2" CAST IRON ROOF DRAIN TO GRADE (FULLY INSULATED)
 - 15 8" METAL STUDS @ 16" O.C. WITH 8" BATT INSULATION (R-25)
 - 16 4" CONCRETE PAD WITH TURNDOWN, SLOPE AWAY FROM BUILDING
 - 17 BACKER ROD AND SEALANT
 - 18 EXTERIOR WALL SCOTCH
 - 19 6"X6"X1/8" ANGLE, CONT. WELD TO TUBE STEEL
 - 20 OVERHEAD DOOR (BY PRE-ENGINEERED METAL BUILDING SUPPLIER)
 - 21 COILING DOOR (BY PRE-ENGINEERED METAL BUILDING SUPPLIER)
 - 22 5/8" GYP. BRD.
 - 23 2" SLOPE BEYOND
 - 24 LONG SPAN METAL BUILDING ROOF PANEL, 24 GAUGE, STANDARD KYNAR FINISH COLOR. PANELS TO BE CONTINUOUS FROM RIDGE TO EAVE. TYP.
 - 25 6" ROLLED INSULATION
 - 26 2" FURLINS
 - 27 PRE-ENGINEERED METAL BUILDING MAIN FRAME BEAM
 - 28 FINISHED METAL FASCIA & EAVE BY METAL BUILDING SUPPLIER
 - 29 PEMB GUTTER (BY PRE-ENGINEERED METAL BUILDING SUPPLIER)
 - 30 PEMB DOWNSPOUT (BY PRE-ENGINEERED METAL BUILDING SUPPLIER)
 - 31 8" PRE-ENGINEERED WALL GRTS. SEE STRUCTURAL
 - 32 6" CONCRETE SLAB
 - 33 FLOOR COVERING. SEE INTERIOR FINISH SCHEDULE
 - 34 RESILIENT BASE
 - 35 TERMITE TREAT UNDER ALL SLABS & FOOTINGS 5' OUTSIDE BUILDING
 - 36 NEW GRADE
 - 37 PEMB METAL WALL PANELS ON 1/2" DENS DECK WITH ROLLED ON VAPOR BARRIER ON BACK SIDE OF PARAPET (TYPICAL)
 - 38 3/8" METAL STUD FRAMING W/ 5/8" GYP. BRD. (PAINT)
 - 39 2X2" LAY-IN CEILING TILE AND GRID
 - 40 1/2" DENS DECK WITH FULLY ADHERED SINGLE PLY MEMBRANE AND TERMINATION BAR SET IN SEALANT
 - 41 PEMB REVERSE ROLL METAL PANELS ON 6" METAL STUDS @ 16" O.C. WITH 1/2" DENS DECK AND VAPOR BARRIER
 - 42 6" ALUMINUM STOREFRONT WITH 1" ARCTIC BLUE GLASS
 - 43 WRAP TUBE STEEL WITH ALUMINUM CLOSURE PANELS TO MATCH STOREFRONT
 - 44 P.T. BLOCKING
 - 45 8" METAL STUDS (16 GA.) @ 16" O.C. WITH 1/2" DENS DECK AND SPRAY-ON AIR/WATER BARRIER. BASE BID TO BE PEMB REVERSE ROLL WALL PANELS. ADD: ALT. NO. 1 & 2 TO BE CAST STONE WITH ADJUSTABLE MASONRY ANCHORS @ EACH 2 S.F.



1 SECTION @ ENTRY
 SCALE: 3/4" = 1'-0"

REVISIONS	
DATE	DESCRIPTION

PROJECT:
VERNON ROAD FIRE STATION
 VERNON ROAD
 LAGRANGE GEORGIA

TITLE:
SECTION AT ENTRY

MODIFIED DATE:	JOB NO: 1731
ISSUED DATE: FOR BID AND PERMIT 07 MAY 2018	SHEET: A5-6

Order Plans @ www.LDOnline.com