

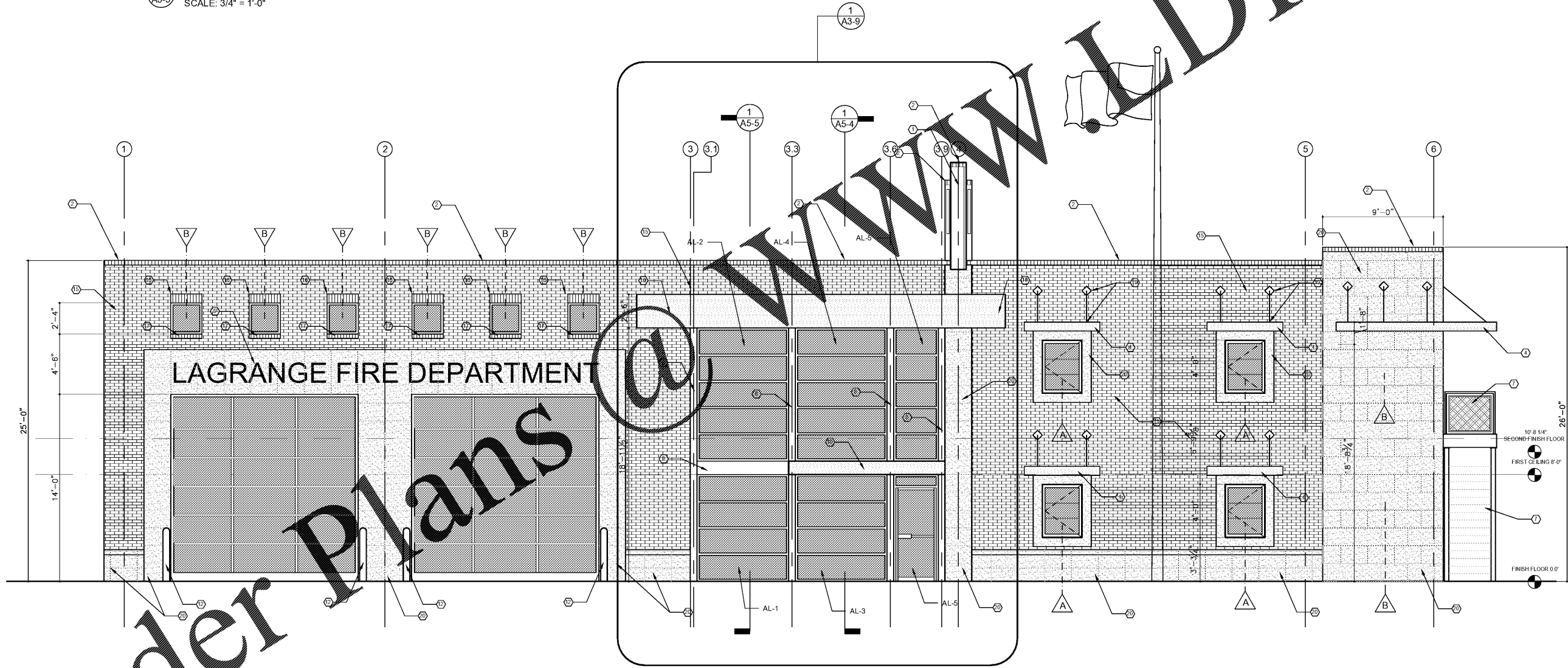
2 PART OF ADD. ALT. NO.2
A3-5 SCALE: 3/4" = 1'-0"

BUILDING IDENTIFICATION LETTERS
18" HIGH CAST ALUMINUM LETTERS WITH CLEAR ANODIZED / TYPE 2 FINISH WITH ALUMINUM LETTER SUPPORT RODS. DESIGN BASED ON LEEDS ARCHITECTURAL LETTERS, STYLE HELVETICA 1002 (OR EQUAL) TO READ, "LAGRANGE FIRE DEPARTMENT" IN ALL CAPS.

NOTE: CAST STONE TO MEET THE FOLLOWING:
a. Physical properties: provide the following:
1. Compressive Strength: ASTM C 1194: 6,500 psi (45 Mpa) min. for products at 28 days.
2. Absorption: ASTM C 1195: 6 max. by cold water method, or 10 max. by the boiling method for products at 28 days.
3. Air Content: ASTM C 173 or C 231, for wet cast product shall be 4-6 for units used in a freeze-thaw environment.
b. Manufacturer of cast stone must be a producer member of the Cast Stone Institute. Provide detailed shop drawings with mix design meeting Cast Stone Institute specifications. Color to be white or off-white to match sample in Architect's office at a ten foot distance.

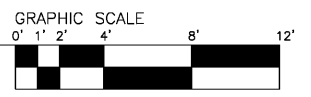
- KEYNOTES
- 1 METAL SIDING (COLOR RED) - TO BE DETERMINED
 - 2 METAL COPING
 - 3 METAL SIDING (COLOR WHITE) - TO BE DETERMINED
 - 4 METAL AWNING (STOCK)
 - 5 18" HIGH METAL LETTERS
 - 6 ALUMINUM STOREFRONT
 - 7 STEEL METAL PAN STAIRS - SEE DETAILS
 - 8 6"x6" TUBE STEEL COLUMN WITH ALUMINUM CLOSURE PANELS INSIDE AND OUTSIDE
 - 9 12"x6" TUBE STEEL COLUMN WITH ALUMINUM CLOSURE PANELS INSIDE AND OUTSIDE
 - 10 CUSTOM METAL AWNING - SEE DETAIL
 - 11 42" HIGH, 1" ACRYLIC SIGN "S" ATTACHED TO METAL SIDING
 - 12 8" STEEL BOLLARD
 - 13 PEMB GUTTER
 - 14 PEMB DOWNSPOUT
 - 15 BRICK VENEER
 - 16 8" BRICK SOLDIER HEADER
 - 17 4" BRICK ROWLOCK SILL
 - 18 PEMB TRIM PIECE TO RUN BETWEEN GLASS METAL SIDING, 4" WIDTH
 - 19 PEMB MANUFACTURER TO PROVIDE ALL WALL, ALL GROUND SUPPORT, BASE OF AWNING AND SUPPORTS, LOCAL
 - 20 CAST STONE

ARCHITECT'S STAMP
STATE OF GEORGIA
7575
REGISTERED ARCHITECT
SIGNATURE REQUIRED
SMITH DESIGN GROUP, INC.
200 WEST HAWKESON STREET
LAGRANGE, GEORGIA 30240
706-882-5511 www.SDGarch.net



SEE WALL TYPES 1 AND 3 FOR ADD. ALT. NO.2 EXTERIOR WALLS

1 ADDITIVE ALTERNATIVE NO. 2
A3-9 BRICK AND CAST STONE EXTERIOR THREE SIDES EXTERIOR ELEVATION
SCALE: 1/4" = 1'-0"



REVISIONS	
DATE	DESCRIPTION

PROJECT:
VERNON ROAD FIRE STATION
VERNON ROAD
LAGRANGE GEORGIA

TITLE:
ADD. ALT. NO.2
EXTERIOR ELEVATION

MODIFIED DATE:	JOB NO: 1731
ISSUED DATE: FOR BID AND PERMIT 07 MAY 2018	SHEET: A3-9

Order Plans

WWW.LDILINE.COM