

NOTE: CAST STONE TO MEET THE FOLLOWING:  
 a. Physical properties provide the following:  
 1. Compressive Strength: ASTM C 1194: 6,500 psi (45 Mpa) min. for products at 28 days.  
 2. Absorption: ASTM C 1195: 6% max. by cold water method, or 10% max. by the boiling method for products at 28 days.  
 3. Air Content: ASTM C 173 or C 231, for wet cast product shall be 4-6% for units used in a freeze-thaw environment.  
 b. Manufacturer of cast stone must be a producer member of the Cast Stone Institute. Provide detailed shop drawings with mix design meeting Cast Stone Institute specifications. Color to be white or off-white to match sample in Architect's office at a ten foot distance.

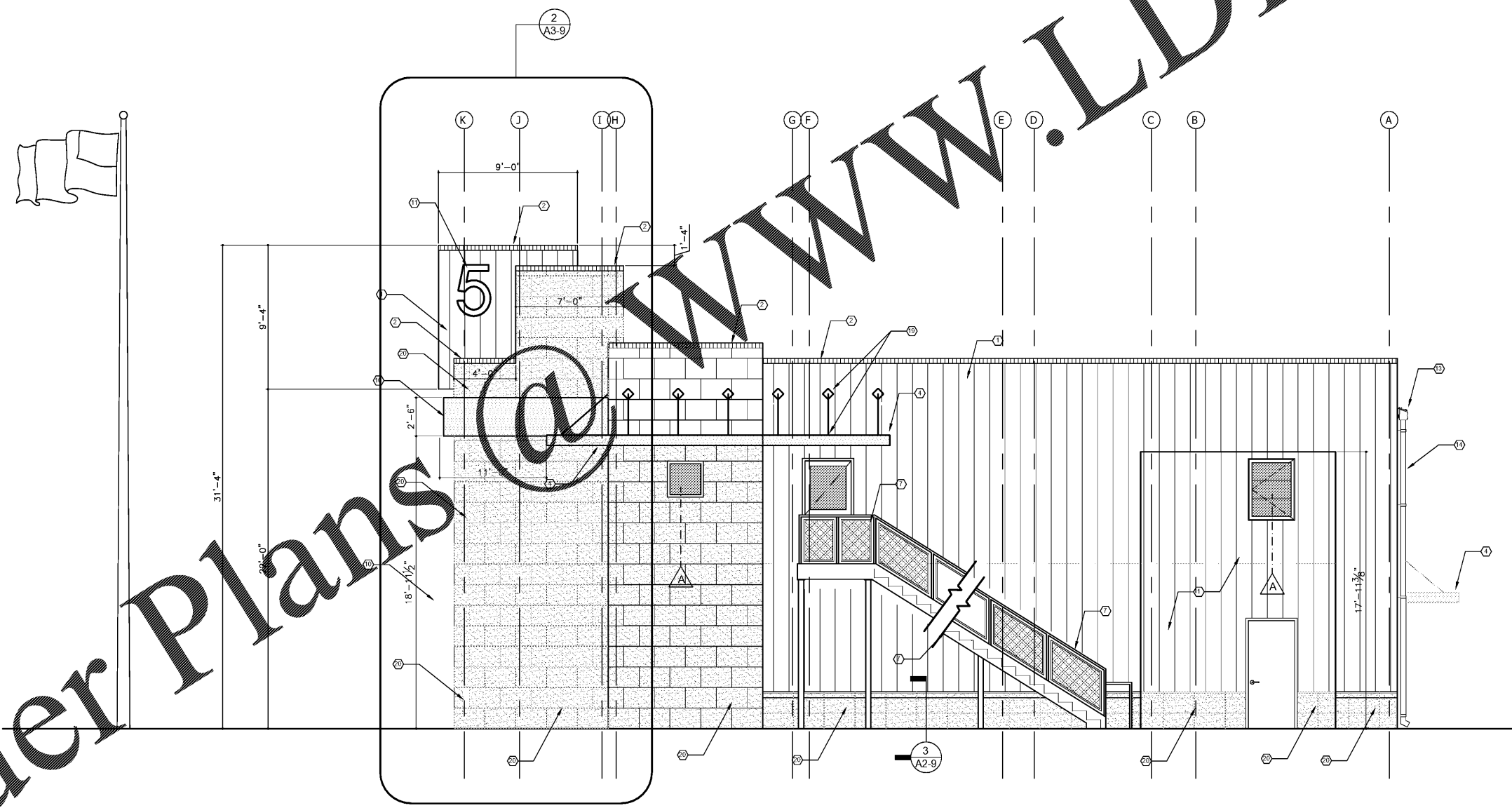
- KEYNOTES
- ① METAL SIDING (COLOR RED) - TO BE DETERMINED
  - ② METAL COPING
  - ③ METAL SIDING (COLOR WHITE) - TO BE DETERMINED
  - ④ METAL AWNING (STOCK)
  - ⑤ 18" HIGH METAL LETTERS
  - ⑥ ALUMINUM STOREFRONT
  - ⑦ STEEL METAL PAN STAIRS. SEE DETAILS.
  - ⑧ 6"x6" TUBE STEEL COLUMN WITH ALUMINUM CLOSURE PANELS INSIDE AND OUTSIDE.
  - ⑨ 12"x8" TUBE STEEL COLUMN WITH ALUMINUM CLOSURE PANELS INSIDE AND OUTSIDE.
  - ⑩ CUSTOM METAL AWNING. SEE DETAIL.
  - ⑪ 42" HIGH, 1" ACRYLIC SIGN "S" ATTACHED TO METAL SIDING.
  - ⑫ 6" STEEL BOLLARD
  - ⑬ PEMB GUTTER
  - ⑭ PEMB DOWNSPOUT
  - ⑮ BRICK VENEER
  - ⑯ 8" BRICK SOLDIER HEADER
  - ⑰ 4" BRICK ROWLOCK SILL
  - ⑱ PEMB TRIM PIPE TO RUN BETWEEN CLOSURE PANELS SIDING. SEE DETAIL.
  - ⑲ PEMB MANUFACTURER TO PROVIDE ADDITIONAL WALL GRIDS TO SUPPORT BASE DRAWINGS AND SUPPORT STRUCTURE.
  - ⑳ CAST STONE

ARCHITECT'S STAMP

SIGNATURE REQUIRED

**SMITH DESIGN GROUP, INC.**  
 200 WEST WILKINSON STREET  
 LAGRANGE, GEORGIA 30240  
 706-882-5511 www.SDGarch.net

SEE WALL TYPES 1 AND 3  
 FOR ADD. ALT. NO.1 EXTERIOR WALLS



EXTERIOR ELEVATION - ADD. ALT. NO. 1  
 ADD CAST STONE TO EXTERIOR  
 ON 3 SIDES. SEE ELEVATIONS.



REVISIONS	
DATE	DESCRIPTION

PROJECT:  
**VERNON ROAD FIRE STATION**  
 VERNON ROAD  
 LAGRANGE GEORGIA

TITLE:  
**ADD. ALT. NO.1  
 EXTERIOR ELEVATION**

MODIFIED DATE:	JOB NO: <b>1731</b>
ISSUED DATE: FOR BID AND PERMIT 07 MAY 2018	SHEET: <b>A3-6</b>

Order Plans @ [www.LDILine.com](http://www.LDILine.com)