
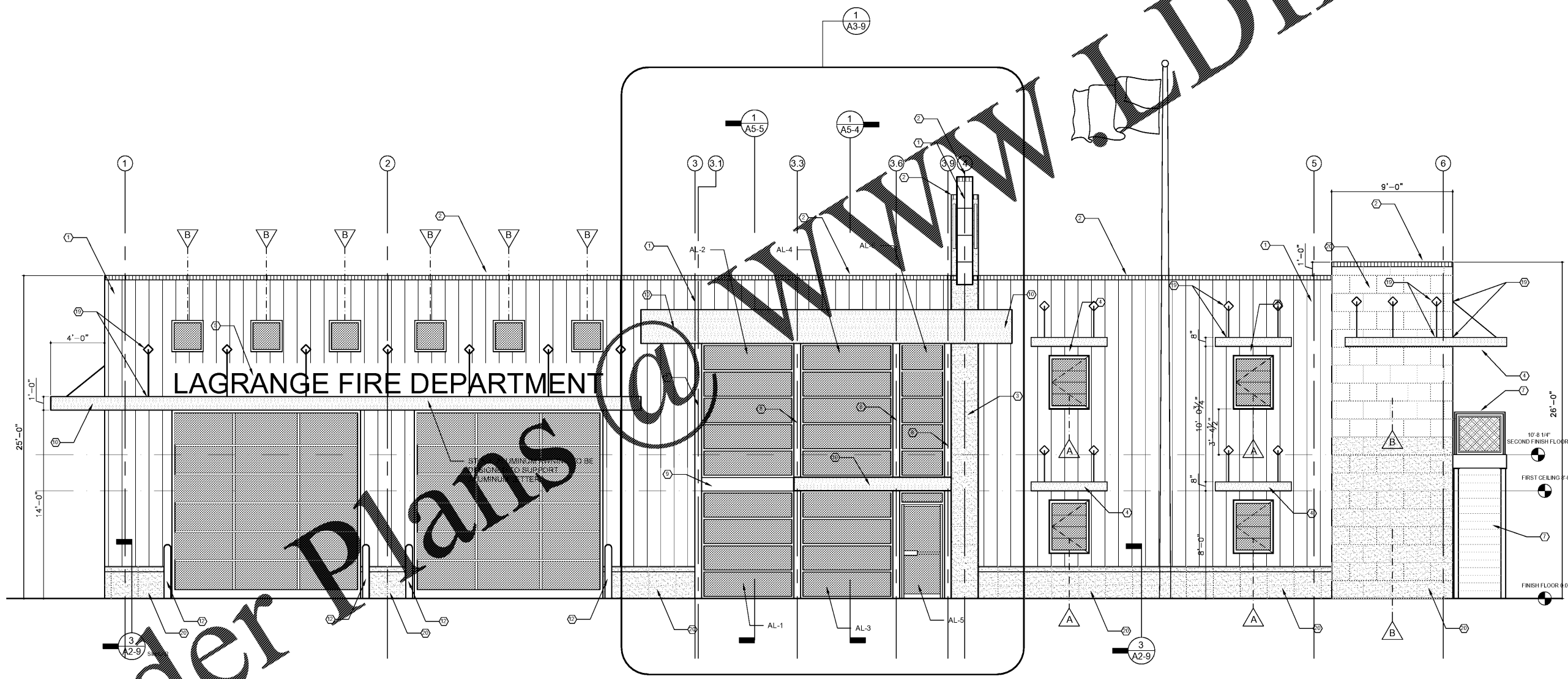


BUILDING IDENTIFICATION LETTERS
 18" HIGH CAST ALUMINUM LETTERS WITH CLEAR ANODIZED / TYPE 2 FINISH WITH ALUMINUM LETTER SUPPORT RODS. DESIGN BASED ON LEEDS ARCHITECTURAL LETTERS, STYLE HELVETICA 1002 (OR EQUAL) TO READ, "LAGRANGE FIRE DEPARTMENT" IN ALL CAPS.

NOTE: CAST STONE TO MEET THE FOLLOWING:
 a. Physical properties: provide the following:
 1. Compressive Strength: ASTM C 1194: 6,500 psi (45 Mpa) min. for products at 28 days.
 2. Absorption: ASTM C 1195: 6% max. by cold water method, or 10% max. by the boiling method for products at 28 days.
 3. Air Content: ASTM C 173 or C 231, for wet cast product shall be 4-6% for units used in a freeze-thaw environment.
 b. Manufacturer of cast stone must be a producer member of the Cast Stone Institute. Provide detailed shop drawings with mix design meeting Cast Stone Institute specifications. Color to be white or off-white to match sample in Architect's office at a ten foot distance.

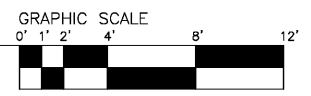
- KEYNOTES**
- 1 METAL SIDING (COLOR RED) - TO BE DETERMINED
 - 2 METAL COPING
 - 3 METAL SIDING (COLOR WHITE) - TO BE DETERMINED
 - 4 METAL AWNING (STOCK)
 - 5 18" HIGH METAL LETTERS
 - 6 ALUMINUM STOREFRONT
 - 7 STEEL METAL PAN STAIRS - SEE DETAILS
 - 8 6"x6" TUBE STEEL COLUMN WITH ALUMINUM CLOSURE PANELS INSIDE AND OUTSIDE.
 - 9 12"x8" TUBE STEEL COLUMN WITH ALUMINUM CLOSURE PANELS INSIDE AND OUTSIDE.
 - 10 CUSTOM METAL AWNING - SEE DETAIL
 - 11 42" HIGH, 1" ACRYLIC SIGN "S" ATTACHED TO METAL SIDING.
 - 12 6" STEEL BOLLARD
 - 13 PEMB GUTTER
 - 14 PEMB DOWNSPOUT
 - 15 BRICK VENEER
 - 16 8" BRICK SOLDIER HEADER
 - 17 4" BRICK ROWLOCK SILL
 - 18 PEMB TRIM PIPE TO RUN BETWEEN FLOORS. 1" S.D. NO. 1" W.D.T.
 - 19 PEMB MANUFACTURER TO PROVIDE ALL GIRTS TO SUPPORT BRICK AWNINGS AND SUPPORT LOCATIONS.
 - 20 CAST STONE

ARCHITECT'S STAMP

 SIGNATURE REQUIRED
SMITH DESIGN GROUP, INC.
 200 WEST WILKINSON STREET
 LAGRANGE, GEORGIA 30240
 770-882-5511 www.SDGarch.net



SEE WALL TYPES 1 AND 3 FOR ADD. ALT. NO.1 EXTERIOR WALLS

EXTERIOR ELEVATION - ADD. ALT. NO. 1
 ADD CAST STONE TO EXTERIOR ON 3 SIDES. SEE ELEVATIONS.



REVISIONS	
DATE	DESCRIPTION

PROJECT:
VERNON ROAD FIRE STATION
 VERNON ROAD
 LAGRANGE GEORGIA

TITLE:
ADD. ALT. NO.1 EXTERIOR ELEVATION

MODIFIED DATE:	JOB NO: 1731
ISSUED DATE: FOR BID AND PERMIT 07 MAY 2018	SHEET: A3-5

Order Plans

WWW.LDILine.com