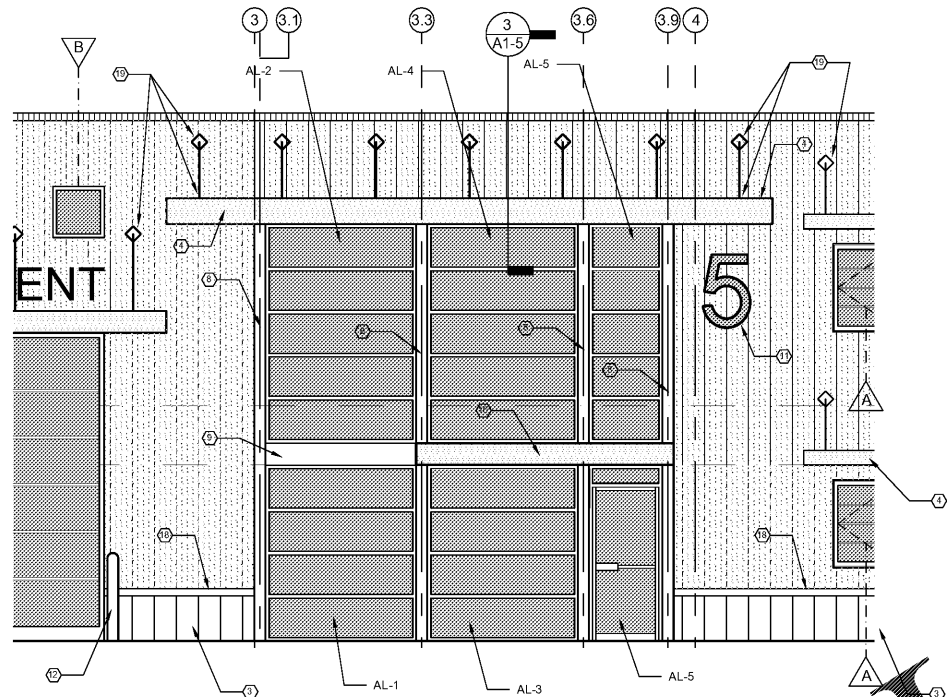


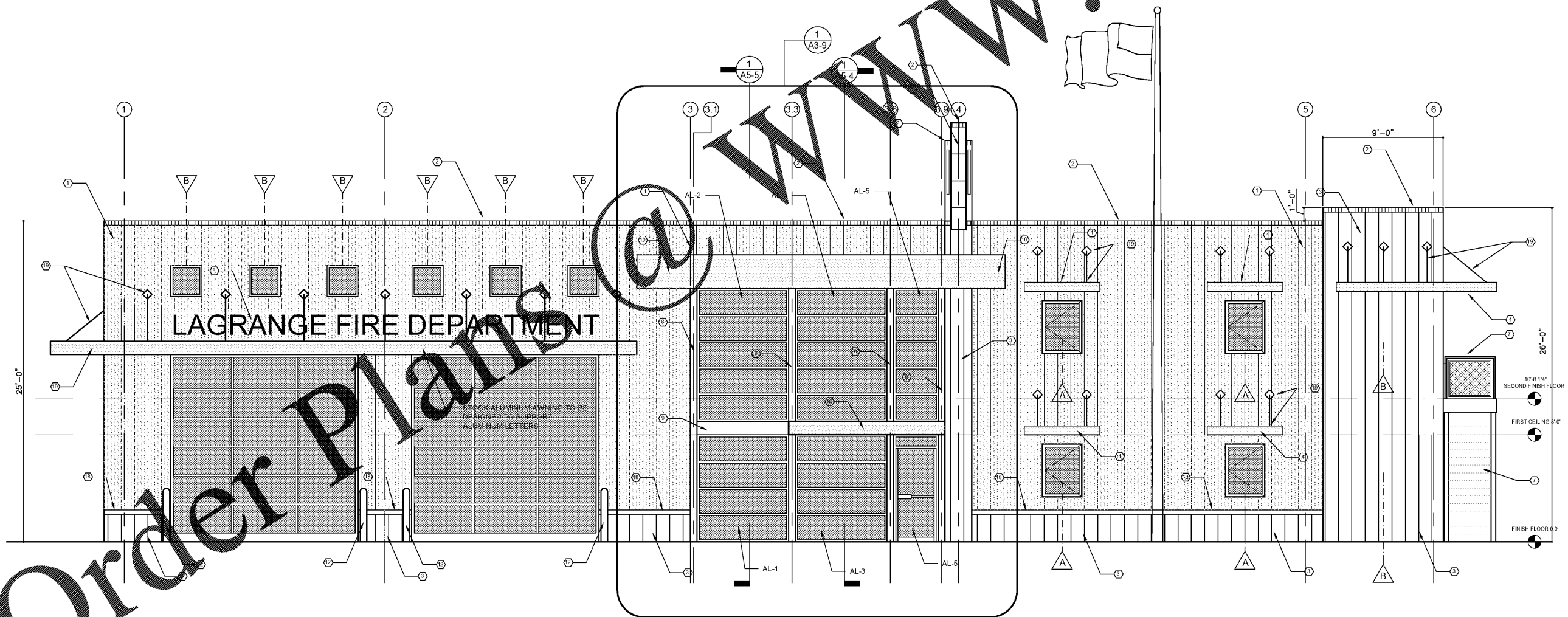
BUILDING IDENTIFICATION LETTERS
 18" HIGH CAST ALUMINUM LETTERS WITH CLEAR ANODIZED / TYPE 2 FINISH WITH ALUMINUM LETTER SUPPORT RODS. DESIGN BASED ON LEEDS ARCHITECTURAL LETTERS, STYLE HELVETICA 1002 (OR EQUAL) TO READ, "LAGRANGE FIRE DEPARTMENT" IN ALL CAPS.



DEDUCTIVE ALTERNATIVE NO.1
ALL METAL EXTERIOR
 SCALE: 1/4" = 1'-0"
 OMIT WING WALL AND ALL GLASS 2-STORY ENTRY

- KEYNOTES**
- 1 METAL SIDING (COLOR RED) - TO BE DETERMINED
 - 2 METAL COPING
 - 3 METAL SIDING (COLOR WHITE) - TO BE DETERMINED
 - 4 METAL AWNING (STOCK)
 - 5 18" HIGH METAL LETTERS
 - 6 ALUMINUM STOREFRONT
 - 7 STEEL METAL PAN STAIRS. SEE DETAILS.
 - 8 6"x6" TUBE STEEL COLUMN WITH ALUMINUM CLOSURE PANELS INSIDE AND OUTSIDE.
 - 9 12"x8" TUBE STEEL COLUMN WITH ALUMINUM CLOSURE PANELS INSIDE AND OUTSIDE.
 - 10 CUSTOM METAL AWNING. SEE DETAIL.
 - 11 42" HIGH, 1" ACRYLIC SIGN "S" ATTACHED TO METAL SIDING.
 - 12 6" STEEL BOLLARD
 - 13 PEMB GUTTER
 - 14 PEMB DOWNSPOUT
 - 15 BRICK VENEER
 - 16 8" BRICK SOLDER HEADER
 - 17 4" BRICK ROWLOCK SILL
 - 18 PEMB TRIM PIECE TORUN BETWEEN GLORS OF AWNING. 4" DTH
 - 19 PEMB MANUFACTURER TO PROVIDE ANCHORS TO SUPPORT BASE FINISHINGS AND SUPPORT RODS.

ARCHITECT'S STAMP
 STATE OF GEORGIA
 GEORGINA SMITH
 7575
 REGISTERED ARCHITECT
 SIGNATURE REQUIRED
 SMITH DESIGN GROUP, INC.
 200 WEST WILKINSON STREET
 LAGRANGE, GEORGIA 30240
 770-882-5511 www.SDGarch.net



EXTERIOR ELEVATION - BASE BID
ALL METAL EXTERIOR
 SCALE: 1/4" = 1'-0"
 GRAPHIC SCALE
 0' 1' 2' 4' 8' 12'

REVISIONS	
DATE	DESCRIPTION

PROJECT:
 VERNON ROAD FIRE STATION
 VERNON ROAD
 LAGRANGE GEORGIA

TITLE:
 BASE BID
 EXTERIOR ELEVATION
 ALL METAL EXTERIOR

MODIFIED DATE:	JOB NO: 1731
ISSUED DATE: FOR BID AND PERMIT 07 MAY 2018	SHEET: A3-1

Order Plans @ WWW.LDILine.com