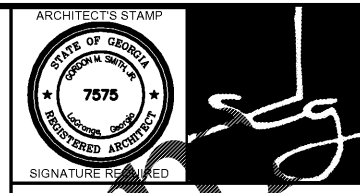


SPACE NO.	SPACE NAME	FLOOR		BASE		NORTH WALL		EAST WALL		SOUTH WALL		WEST WALL		CEILING		CLG. HT.	CLR. GP.	NOTES
		MATERIAL	FINISH	MATERIAL	FINISH	MATERIAL	FINISH	MATERIAL	FINISH	MATERIAL	FINISH	MATERIAL	FINISH	MATERIAL	FINISH			
101	ENTRY FOYER	AMTICO - TYPE 1	1															
102	PASSAGE	CARPET TYPE 2	1															
103	OFFICE	RESILIENT TILE	1															
104	OFFICE	AMTICO - TYPE 2	1															
105	CLOSET	PORCELAIN TILE (THIN SET)	1															
106	I.T. CLOSET	RESILIENT SHEETS	1															
107	JANITOR	CONCRETE	1															
108	BATH	FACTORY TROWEL	1															
109	CLOSET	PAINT	1															
110	DECON AREA	BROOMWET MOP CLEAN STAIN AND SEAL	1															
111	TOILET	RESILIENT - 4" HIGH	1															
112	GEAR ROOM	FRIZ TILE (6" HIGH)	1															
113	PASSAGE	WOOD 1/2" HIGH RBB18	1															
114	MECH / ELEC	4" HIGH PORCELAIN	1															
115	STORAGE		1															
116	WORKOUT ROOM		1															
117	APPARATUS BAY		1															

KEYNOTES
 (1) ADD. ALT. NO. 4 TO INSTALL PORCELAIN TILE FLOOR AND 4" PORCELAIN TILE BASE IN THIS SPACE IN LIEU OF AMTICO AND RESILIENT BASE

LEGEND
 SP - SPECIAL PAINTING
 PT. - PAINT
 C.R. - CHAIR RAIL



SMITH DESIGN GROUP, INC.
 20 WEST HAWKSWOOD STREET
 LAGRANGE, GEORGIA 30240
 770-882-5511 www.SDGarch.net

- A. VERIFY ALL ROOM FINISHES WITH OWNER PRIOR TO ORDERING MATERIALS.
- B. INSTALL WATER RESISTANT GYPSUM BOARD IN TOILET ROOMS AND JANITOR ROOMS. IF WALLS ARE RATED PARTITIONS, INSTALL W.R. GYP. BRD. OVER 5/8" RATED GYP. BRD.
- C. ACOUSTICAL TILE TYPE 2 TO BE VINYL COVERED GYPSUM BOARD.
- D. ACOUSTICAL TILE TYPE 1 TO BE REVEAL EDGE.

REVISIONS	
DATE	DESCRIPTION

PROJECT:
VERNON ROAD FIRE STATION
 VERNON ROAD
 LAGRANGE GEORGIA

TITLE:
FINISH SCHEDULE

MODIFIED DATE: _____ JOB NO: **1731**
 ISSUED DATE: _____ FOR BID AND PERMIT SHEET: **A2-2**
 07 MAY 2018

LVT SPECIFICATION:
 LVT DESIGN BASED ON AMTICO - TYPE 1; SPACIA X-TRA; PALE CHERRY; WOOD; 4.5" X 36"; BEVELED; REF SSW2525; THICKNESS 2.5MM

PORCELAIN TILE SPECIFICATION:
 FLOOR & WALL SPEC DESIGN BASED ON DAL-TILE, KIMONA SILK MORNING DOVE P325, 12"X24"

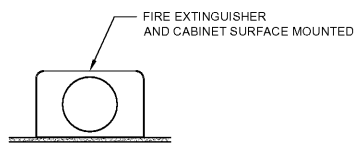
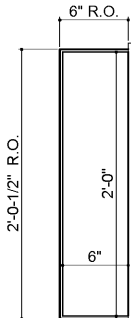
NOTE TO G.C.:
 IF A CURING COMPOUND IS APPLIED ON THE CONCRETE SLAB, BE AWARE THAT IN DIV. 9 THE RESILIENT TILE, CARPET, CERAMIC TILE AND OTHER FLOORING MANUFACTURERS REQUIRE THAT THE SUBFLOOR IS FREE OF CURING COMPOUNDS. IT WILL TAKE DELIBERATE ACTION TO REMOVE THE CURING COMPOUND.

ALWAYS AWARE THAT IN DIV. 9 ANOTHER REQUIREMENT PERTAINING TO THE CONCRETE STATES THAT MOISTURE EMISSIONS SHALL NOT EXCEED 3 OR 5 POUNDS OF WATER PER 1,000 S.F. PER 24 HOURS, AS MEASURED BY ANHYDROUS CALCIUM CHLORIDE TESTS.

TIMELY REMOVAL OF THE CURING COMPOUND (AFTER COMPRESSIVE STRENGTH IS ESTABLISHED) MAY HAVE A DIRECT BEARING ON THE MOISTURE EMISSIONS PRESENT WHEN IT IS TIME TO INSTALL FLOOR COVERINGS IN DIV. 9.

TYPE 1 CEILING TO BE 2X2 LAY-IN CEILING AND GRID BY ARMSTRONG 704-A W/ REVEAL EDGE, WITH SHADOW EDGE FINISHING, TYPICAL.

ACCEPTABLE MANUFACTURERS OF L.V.T. INCLUDE AMTICO, ARMSTRONG, AND MANNINGTON



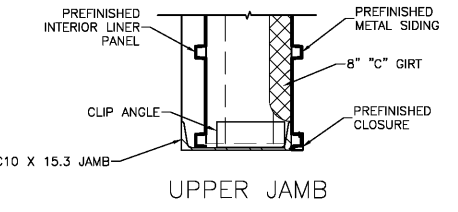
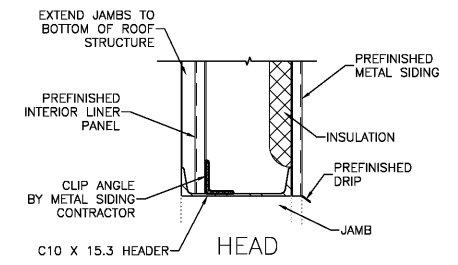
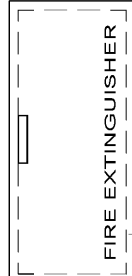
FIRE EXTINGUISHER CABINET TYPE 1 - SURFACE MOUNT SCALE: NONE

FULLY RECESSED CABINET TO FIT IN 6" THICK WALL

SEE PLANS FOR LOCATIONS

FIRE EXTINGUISHER CABINETS SHALL BE EQUAL TO LARSEN "OCCULT" SERIES MODEL NO. SS0-2409, FULLY RECESSED, SOLID DOOR STYLE, BLACK TYPE "A" LETTERS, STAINLESS STEEL FINISH.

FIRE EXTINGUISHER CABINET TYPE 2 - FULLY RECESSED SCALE: NONE



HEAD, JAMB AT PEMB WALL SCALE: NOT TO SCALE