



SMITH DESIGN GROUP, INC.
 20 WEST JACKSON STREET
 LAGRANGE, GEORGIA 30240
 770-882-5511 www.SDGarch.net

DOOR SCHEDULE HARDWARE ABBREVIATIONS

B	3 BUTT HINGES
C	CLOSER
K	KICKPLATE (8" X 34")
PP	PUSH / PULL HARDWARE
PSG	PASSAGE HARDWARE
PVCY	PRIVACY HARDWARE / OFFICE LOCK
WS	WEATHER SEAL
X	EXIT PANIC HARDWARE W/ LOCKSET
XO	EXIT ONLY PANIC DEVICE HARDWARE
DS	DOOR STOP ON WALL
FS	FLOOR STOP DOOR STOP

REVISIONS

DATE	DESCRIPTION

PROJECT:
VERNON ROAD FIRE STATION
 VERNON ROAD
 LAGRANGE GEORGIA

TITLE:
DOOR / FRAME SCHEDULE

MODIFIED DATE: JOB NO:
 1731

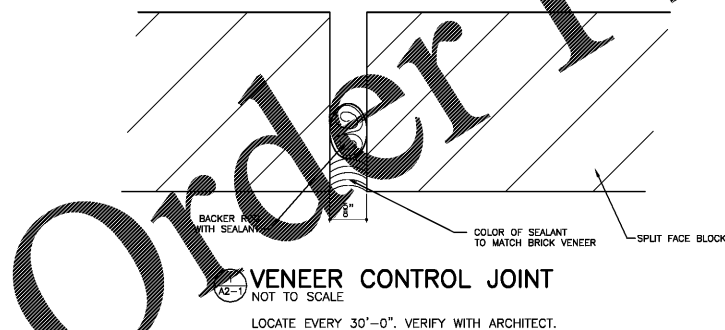
ISSUED DATE:
 FOR BID AND PERMIT SHEET:
07 MAY 2018 **A2-1**

DOOR AND FRAME SCHEDULE

DOOR SCHEDULE																	FRAME SCHEDULE																
DOOR MARK	SIZE			TYPE	MAT'L	FIN.	GLASS		LOUVER		GRILLE			DOOR SIGN		NOTES	SIZE			TYPE	MAT'L	FIN.	DETAIL			FIN. HARDWARE		NOTES	DOOR MARK				
	W	H	T				TYPE	W	H	TYPE	W	H	TYPE	W	H		TYPE	W	H				W	H	D	HD	JB			SL	LABEL	SET No.	KEY SIDE
1	3'-0"	7'-0"	1-3/4"	AL-1	ALUMINUM	FACTORY	3									CLOSER PANIC DEVICE	3'-4"	7'-4"	6"	AL-1	ALUMINUM	FACTORY									1		
2	12'-0"	14'-0"	1-3/4"	G-1	METAL	FACTORY										AUTOMATIC GARAGE DOOR	12'-0"	14'-0"	10"	C-1	METAL	PAINT									2		
3	12'-0"	14'-0"	1-3/4"	G-1	METAL	FACTORY										AUTOMATIC GARAGE DOOR	12'-0"	14'-0"	10"	C-1	METAL	PAINT									3		
4	3'-0"	7'-0"	1-3/4"	CHM-1	METAL	PAINT	3									CLOSER PANIC DEVICE	3'-4"	7'-4"	10-3/4"	CHM-1	METAL	PAINT									4		
5	3'-0"	7'-0"	1-3/4"	CHM-2	METAL	PAINT										CLOSER	3'-4"	7'-4"	10-3/4"	CHM-1	METAL	PAINT									5		
6	3'-0"	7'-0"	1-3/4"	CHM-1	METAL	PAINT	3									CLOSER PANIC DEVICE	3'-4"	7'-4"	10-3/4"	CHM-1	METAL	PAINT									6		
7	3'-0"	7'-0"	1-3/4"	CHM-1	METAL	PAINT	3									CLOSER PANIC DEVICE	3'-4"	7'-4"	10-3/4"	CHM-1	METAL	PAINT									7		
8	3'-0"	7'-0"	1-3/4"	CHM-1	METAL	PAINT	3									CLOSER	3'-4"	7'-4"	10"	CHM-1	METAL	PAINT				2 HOUR					8		
9	3'-0"	7'-0"	1-3/4"	CHM-2	METAL	PAINT										CLOSER	3'-4"	7'-4"	10"	CHM-1	METAL	PAINT				2 HOUR					9		
10	3'-0"	7'-0"	1-3/4"	CHM-2	METAL	PAINT										CLOSER	3'-4"	7'-4"	10"	CHM-1	METAL	PAINT				2 HOUR					10		
11	3'-0"	7'-0"	1-3/4"	WD-1	WOOD	STAIN										CLOSER	3'-4"	7'-4"	5-3/4"	CHM-1	METAL	PAINT				2 HOUR					11		
12	3'-0"	7'-0"	1-3/4"	WD-1	WOOD	STAIN										CLOSER	3'-4"	7'-4"	10"	CHM-1	METAL	PAINT									12		
13	3'-0"	7'-0"	1-3/4"	WD-2	WOOD	STAIN	3																								13		
14	3'-0"	7'-0"	1-3/4"	WD-2	WOOD	STAIN	3																								14		
15	3'-0"	7'-0"	1-3/4"	WD-1	WOOD	STAIN																									15		
16	3'-0"	7'-0"	1-3/4"	WD-1	WOOD	STAIN																									16		
17	3'-0"	7'-0"	1-3/4"	WD-1	WOOD	STAIN									1 HOUR											1 HOUR					17		
18	3'-0"	7'-0"	1-3/4"	WD-1	WOOD	STAIN																									18		
19	3'-0"	7'-0"	1-3/4"	WD-1	WOOD	STAIN																									19		
20	3'-0"	7'-0"	1-3/4"	WD-1	WOOD	STAIN																									20		
21	3'-0"	7'-0"	1-3/4"	CHM-2	METAL	PAINT									2 HOUR												1 HOUR				21		
22	3'-0"	7'-0"	1-3/4"	CHM-2	METAL	PAINT									2 HOUR												1 HOUR				22		
23	3'-0"	7'-0"	1-3/4"	WD-1	WOOD	STAIN																									23		
24	8'-0"	7'-0"	1-3/4"	C-1	METAL	FACTORY									2 HOUR																24		
25	3'-0"	7'-0"	1-3/4"	WD-1	WOOD	STAIN																									25		
26	3'-0"	7'-0"	1-3/4"	WD-1	WOOD	STAIN																									26		
101	3'-0"	7'-0"	1-3/4"	WD-1	WOOD	STAIN									1 HOUR												1 HOUR				101		
102	2'-8"	7'-0"	1-3/4"	WD-1	WOOD	STAIN																									102		
103	2'-4"	7'-0"	1-3/4"	WD-1	WOOD	STAIN																									103		
104	2'-4"	7'-0"	1-3/4"	WD-1	WOOD	STAIN																									104		
105	2'-4"	7'-0"	1-3/4"	WD-1	WOOD	STAIN																									105		
106	3'-0"	7'-0"	1-3/4"	WD-1	WOOD	STAIN																									106		
107	2'-8"	7'-0"	1-3/4"	WD-1	WOOD	STAIN																									107		
108	2'-8"	7'-0"	1-3/4"	WD-1	WOOD	STAIN																									108		
109	3'-0"	7'-0"	1-3/4"	WD-1	WOOD	STAIN																									109		
110	2'-4"	7'-0"	1-3/4"	WD-1	WOOD	STAIN																									110		
111	2'-4"	7'-0"	1-3/4"	WD-1	WOOD	STAIN																									111		
112	2'-4"	7'-0"	1-3/4"	WD-1	WOOD	STAIN																									112		
113	3'-0"	7'-0"	1-3/4"	WD-1	WOOD	STAIN																									113		
114	2'-8"	7'-0"	1-3/4"	WD-1	WOOD	STAIN																									114		
115	2'-8"	7'-0"	1-3/4"	WD-1	WOOD	STAIN																									115		
116	3'-0"	7'-0"	1-3/4"	WD-1	WOOD	STAIN																									116		
117	3'-0"	7'-0"	1-3/4"	WD-1	WOOD	STAIN																									117		
118	2'-4"	7'-0"	1-3/4"	WD-1	WOOD	STAIN																									118		
119	2'-4"	7'-0"	1-3/4"	WD-1	WOOD	STAIN																									119		
120	2'-4"	7'-0"	1-3/4"	WD-1	WOOD	STAIN																									120		
121	2'-4"	7'-0"	1-3/4"	WD-1	WOOD	STAIN																									121		
122	2'-4"	7'-0"	1-3/4"	WD-1	WOOD	STAIN																									122		
123	2'-4"	7'-0"	1-3/4"	WD-1	WOOD	STAIN																									123		
124	3'-0"	7'-0"	1-3/4"	WD-1	WOOD	STAIN																									124		
125	3'-0"	7'-0"	1-3/4"	WD-1	WOOD	STAIN																									125		
126	2'-8"	7'-0"	1-3/4"	WD-1	WOOD	STAIN																									126		
127	3'-0"	7'-0"	1-3/4"	WD-1	WOOD	STAIN																									127		
128	2'-4"	7'-0"	1-3/4"	WD-1	WOOD	STAIN																									128		
129	2'-4"	7'-0"	1-3/4"	WD-1	WOOD	STAIN																									129		
130	2'-4"	7'-0"	1-3/4"	WD-1	WOOD	STAIN																									130		
131	3'-0"	7'-0"	1-3/4"	CHM-1	METAL	PAINT									2 HOUR												2 HOUR				131		

NOTES:

- COMPLY WITH ALL HANDICAPPED ACCESSIBILITY AND RELATED REQUIREMENTS
- HARDWARE TO BE MID-LINE COMMERCIAL GRADE LEVER HANDLE HARDWARE WITH BRUSHED STAINLESS STEEL FINISH, S MANUFACTURED BY SARGENT, SCHLAGE, RIXON OR APPROVED EQUIVALENT. (SEE PROJECT MANUAL FOR DETAILED SPECIFICATIONS)
- ALL HARDWARE NOTED TO BE PRIVACY HARDWARE SHALL BE KEYED FROM ENTRY SIDE AND THUMBLATCH OR OTHER NON-KEYED LOCK RELEASE FROM INSIDE.
- ALL DOORS TO HAVE WALL OR FLOOR MOUNTED DOOR STOPS AND SILENCERS AS APPROVED BY ARCHITECT.
- COORDINATE ALL KEYING AND HARDWARE FUNCTIONS WITH OWNER / END USER PRIOR TO PURCHASE OR INSTALLATION OF DOORS, FRAMES AND/OR HARDWARE.
- DOORS 3, 4 AND 8 TO RECEIVE HAGER INTERLOCKING / OVERHEAD STRIP GUARDS MODEL 7175.
- ALL DOORS TO HAVE SILENCERS.



LEGEND

- { INDICATES A SINGLE FRAME W/ MULTIPLE DOORS FOR PURCHASE AND INSTALLATION
- * SEE DOOR TYPES FOR GLASS SIZE AND TYPE.

GENERAL NOTES

- ALL RATED DOORS AND FRAMES TO HAVE REQUIRED DOOR ASSEMBLY RATINGS.
- PROVIDE CLOSERS ON ALL RATED DOORS.
- WEATHERSTRIPPING REQUIRED ON ALL EXTERIOR DOORS.
- PROVIDER WALL BUMPERS FOR ALL INTERIOR DOORS.