

CODE SUMMARY

SITE ADDRESS

VERNON ROAD - LAGRANGE, GEORGIA 30240

ZONING - TO BE DETERMINED

CODE OFFICIALS CONTACT

CITY OF LAGRANGE, BUILDING OFFICIAL
 200 RIDLEY AVENUE, RM. 204, LAGRANGE, GEORGIA 30240
 706-883-2052

Current Mandatory Codes as Adopted by DCA:

- International Building Code, 2012 Edition, with Georgia Amendments (2014) (2015) (2017)
- International Residential Code, 2012 Edition, with Georgia Amendments (2014) (2015)
- International Fire Code, 2012 Edition, with Georgia Amendments (2014)
- International Plumbing Code, 2012 Edition, with Georgia Amendments (2014) (2015)
- International Mechanical Code, 2012 Edition, with Georgia Amendments (2014) (2015)
- International Fuel Gas Code, 2012 Edition, with Georgia Amendments (2014) (2015)
- National Electrical Code, 2014 Edition (No Georgia Amendments)
- International Energy Conservation Code, 2009 Edition, with Georgia Supplements and Amendments (2011) (2012)
- International Swimming Pool and Spa Code, 2012 Edition, with Georgia Amendments (2014)

For information and questions regarding the Life Safety Code (NFPA 101) or the Georgia Accessibility Code please contact the State Fire Marshal's Office.

OCCUPANCY CLASSIFICATION

OCCUPANCY	GROSS SQUARE FOOTAGE	OCCUPANCY LOAD
GARAGE (S-1)	2,228 SF	VERIFY WITH OWNER (200 SF / PERSON IBC)
BUSINESS	2,806 SF	28 PERSONS (100 SF / PERSON)
RESIDENTIAL (R-1)	2,808 SF	VERIFY WITH OWNER (200 SF / PERSON IBC)
TOTAL	7,842 GSF	VERIFY WITH OWNER

OCCUPANCY SEPARATION

- 2 HOUR SEPARATION BETWEEN S-1 AND BUSINESS
- 2 HOUR SEPARATION BETWEEN S-1 AND RESIDENTIAL
- 2 HOUR SEPARATION BETWEEN BUSINESS AND RESIDENTIAL

CONSTRUCTION CLASSIFICATION

CONSTRUCTION TYPE	VB (UNSPRINKLERED) PRE-ENGINEERED METAL BUILDING WITH METAL STUDS ON EXTERIOR AND INTERIOR WALLS OF CONCRETE MASONRY AND METAL STUD FRAMING
FOUNDATION:	SLAB-ON-GRADE
FAÇADE:	CAST STONE BLOCK AND METAL SIDING (EXTERIOR)
ROOF:	METAL ROOF
SEISMIC ZONE:	SEE STRUCTURAL DRAWINGS
FROST DEPTH:	12" MIN. DESIGN DEPTH
SNOW LOAD:	SEE STRUCTURAL DRAWINGS
WIND SPEED:	SEE STRUCTURAL DRAWINGS

OCCUPANCY

- S-1 STORAGE
- B-1 BUSINESS
- R-1 RESIDENTIAL

ALLOWABLE HEIGHT

HEIGHT ALLOWED: 55'-0"

HEIGHT PROVIDED: 24'-0"

EGRESS REQUIREMENTS

EGRESS WIDTH FACTOR:

LEVEL COMPONENTS = 0.2" PER PERSON EGRESS WIDTH PROVIDED = MIN 36"

STAIRS = 0.3" PER PERSON EGRESS WIDTH REQUIRED = 0.9"
 (OCCUPANCY = 3 PEOPLE TO ATTIC) EGRESS WIDTH PROVIDED = MIN 36"

MAXIMUM TRAVEL DISTANCE = 150'-0" UNSPRINKLERED [NFPA 101]
 COMMON PATH OF TRAVEL = 200'-0" [NFPA 101]
 MAXIMUM DEAD END CORRIDOR = 20'-0" [NFPA 101]

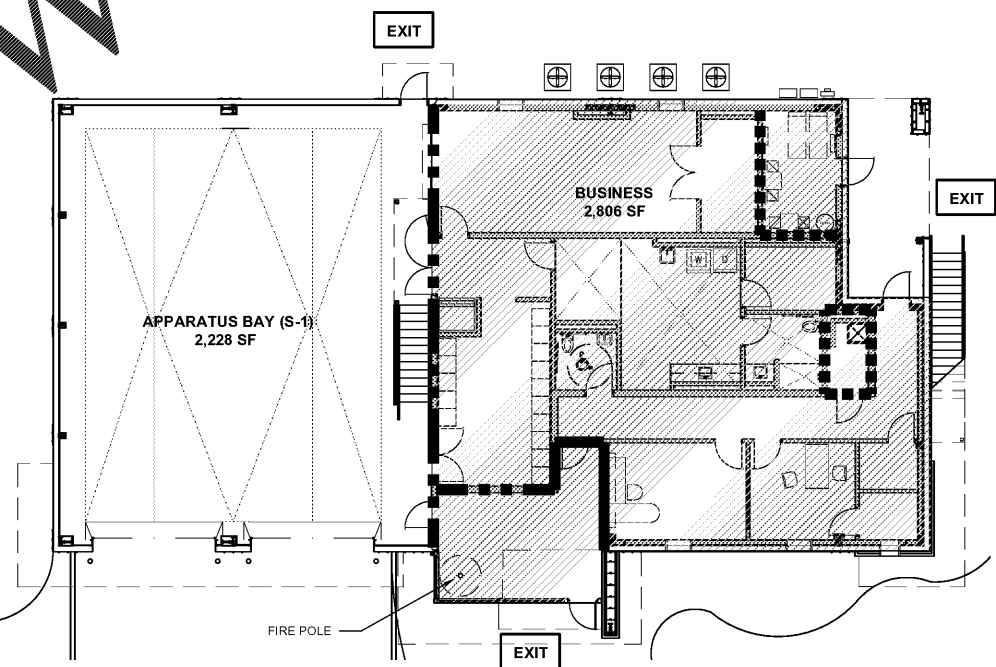
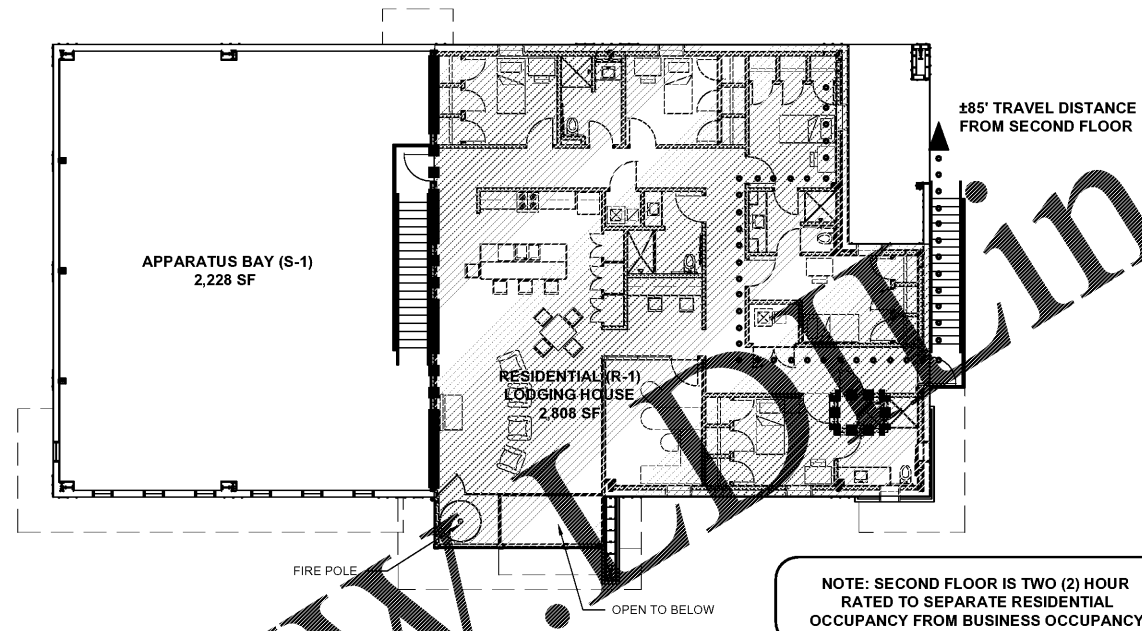
NUMBER OF EXITS PER STORY = 2 EXITS REQUIRED = 2
 EXITS PROVIDED = 2 (AND 3RD AT FRONT)

ENERGY CODE REQUIREMENTS

ROOF: MIN. R-20 INSULATION (PEMB WITH THERMAL BLOCKS)
 WALLS: MIN. R-13 INSULATION (PEMB WITH THERMAL BLOCKS)

FIRE PROTECTION

NOT REQUIRED WHEN LESS THAN 300 OCCUPANCY LOAD.



SMITH DESIGN GROUP, INC.
 20 WEST HUNTERSON STREET
 LAGRANGE, GEORGIA 30240
 706-882-5511 www.SDGarch.net

ARCHITECT'S STAMP
 STATE OF GEORGIA
 GEORGIA SMITH
 7575
 REGISTERED ARCHITECT
 SIGNATURE REQUIRED

REVISIONS

DATE	DESCRIPTION

PROJECT:
VERNON ROAD FIRE STATION
 VERNON ROAD
 LAGRANGE GEORGIA

TITLE:
CODE REVIEW

MODIFIED DATE:	JOB NO: 1731
ISSUED DATE: FOR BID AND PERMIT 07 MAY 2018	SHEET: G-3

Order Plans @ WWW.LDOnline.com