

2701 1st Avenue S
Birmingham, AL 35233
T 205.879.4462
GMCNETWORK.COM

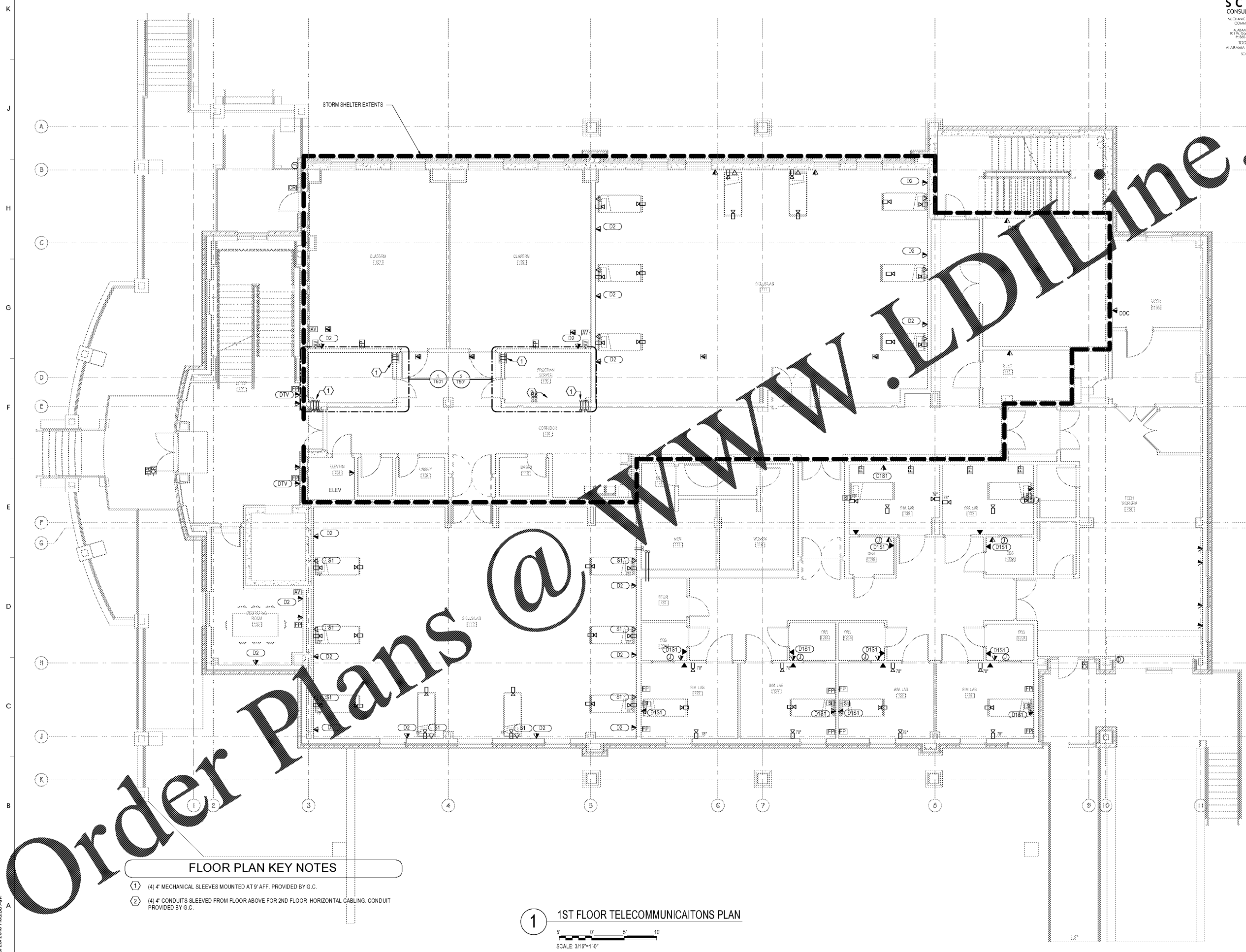
ISSUE	DATE
ISSUE FOR BID	2016.05.25

DRAWN BY: CEC
CHECKED BY: TAN

SIMULATION LABORATORY
BUILDING - USA JOB #16-07
MOBILE, ALABAMA
ABC #2017372
GMC # AMOB160019



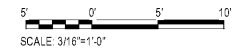
1ST FLOOR
TELECOMMUNICATIONS
PLAN
T201



FLOOR PLAN KEY NOTES

- ① (4) 4" MECHANICAL SLEEVES MOUNTED AT 9' AFF. PROVIDED BY G.C.
- ② (4) 4" CONDUITS SLEEVED FROM FLOOR ABOVE FOR 2ND FLOOR HORIZONTAL CABLING. CONDUIT PROVIDED BY G.C.

1 1ST FLOOR TELECOMMUNICATIONS PLAN



K
J
H
G
F
E
D
C
B
A

1 2 3 4 5 6 7 8 9 10 11 12

Order Plans @ WWW.LDITline.com