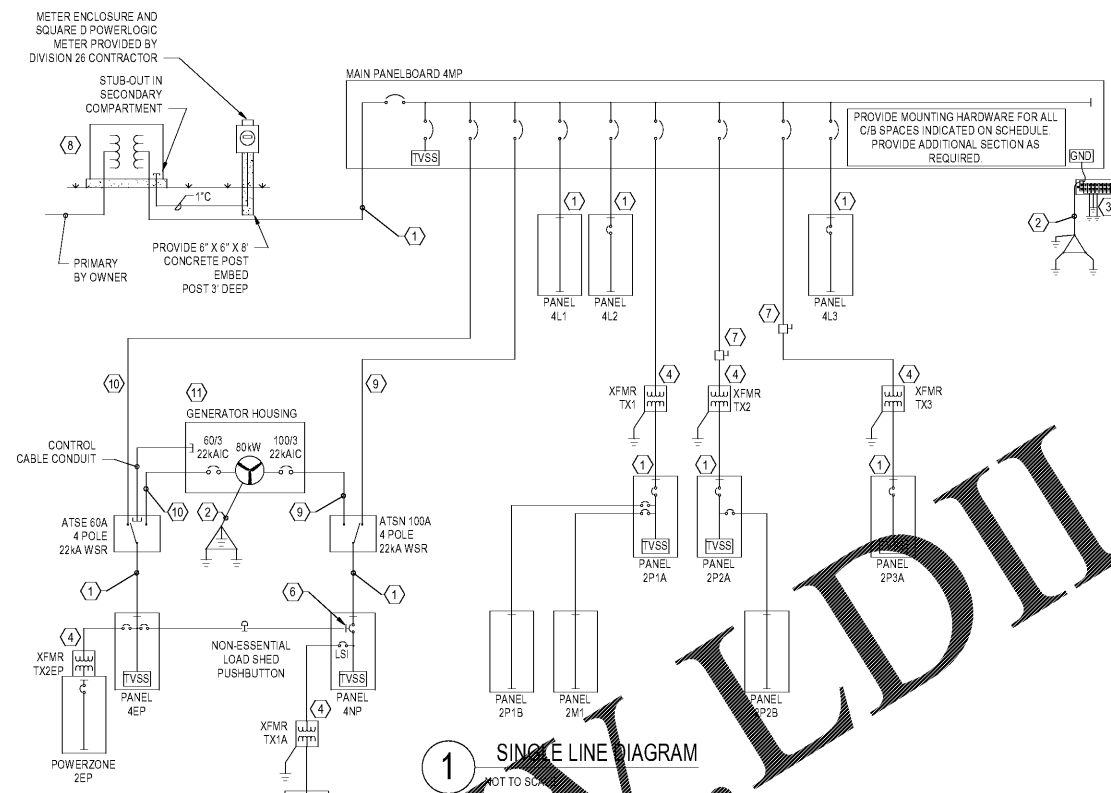


SHEET NOTES

- 1 SEE PANEL BOARD INFORMATION SCHEDULE FOR FEEDER REQUIREMENTS
- 2 TO GROUND WITH THREE 2" GROUND RODS ON 20' CENTERS IN EQUILATERAL TRIANGULAR ARRANGEMENT.
- 3 REINFORCEMENTS TO FOUNDATION REBAR, BUILDING WATER SERVICE, BUILDING STEEL AND BUILDING COUNTERPOISE LOOP.
- 4 SEE TRANSFORMER SCHEDULE FOR FEEDER REQUIREMENTS.
- 5 MAIN ELECTRICAL GROUNDING BUSBAR SIZE AS REQUIRED. MOUNT IMMEDIATELY ADJACENT TO MAIN PANEL IN A VISIBLE LOCATION. SEE DETAIL 'GEC' SHALL BE CONTINUOUS FROM PANEL TO MADE ELECTRODE.
- 6 SHUNT TRIP BREAKER.
- 7 200A/3 POLE NEMA 1 SAFETY SWITCH - HOMERUN SHALL BE #3/10, #6G, 2°C
- 8 PAD MOUNT TRANSFORMER AND PAD PROVIDED BY OWNER. OWNER WILL STUB-OUT TWO (2) 4" PVC SECONDARY CONDUITS. SECONDARY FEEDERS AND CONDUIT WILL BE PROVIDED AND INSTALLED BY CONTRACTOR.
- 9 #4#1, #6G, 2°C
- 10 #4#4, #6G, 1-1/2°C
- 11 DIESEL GENERATOR PROVIDE GROUND TO NEUTRAL SYSTEM BONDING JUMPER. REFER TO SITE PLAN E100 FOR ADDITIONAL REQUIREMENTS.



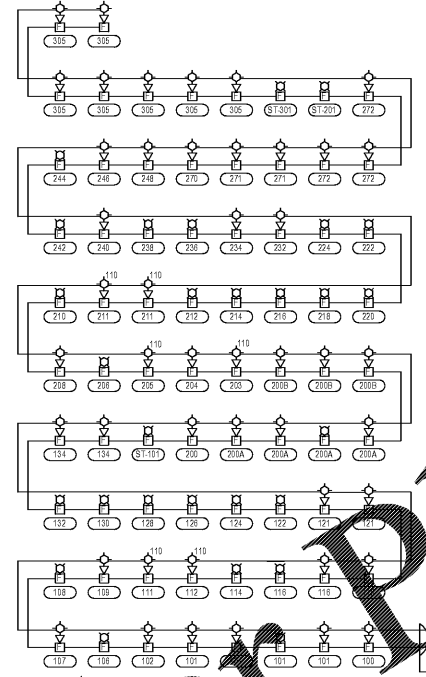
1 SINGLE LINE DIAGRAM
 NOT TO SCALE

PANEL NAME	ENCLOSURE		VOLTAGE	# OF PHASES	WIRE	MCB RATING	SERVICE ENTRANCE	FAULT RATING (KAIC)**	BUS RATING	NEUTRAL BUS RATING	CB TYPE	FEEDERS					
	TYPE	MOUNTING										CONDUCTOR MATERIAL	CONDUCTORS	GROUND	CONDUIT	TVSS	NOTES
4MP	NEMA 1	SURFACE	480Y/277	3	4	800A	YES	25	800 A	800 A	BOLT-ON	CU	2 RUNS OF #4#600	NONE	4°C EA	Yes	
4EP	NEMA 1	SURFACE	480Y/277	3	4	MLO	NO	25	100 A	100 A	BOLT-ON	CU	#4#	#6	1-1/2°C	Yes	
4L1	NEMA 1	SURFACE	480Y/277	3	4	MLO	NO	25	100 A	100 A	BOLT-ON	CU	#4#	#6	1-1/2°C	No	
4L2	NEMA 1	SURFACE	480Y/277	3	4	60A	NO	25	100 A	100 A	BOLT-ON	CU	#4#	#6	1-1/2°C	No	
4L3	NEMA 1	SURFACE	480Y/277	3	4	60A	NO	25	100 A	100 A	BOLT-ON	CU	#4#	#6	1-1/2°C	No	
4NP*	NEMA 1	SURFACE	480Y/277	3	4	100A	NO	25	100 A	100 A	BOLT-ON	CU	#4#1	#6	2°C	Yes	
2P1A	NEMA 1	SURFACE	208Y/120	3	4	225A	NO	10	225 A	225 A	BOLT-ON	CU	#4#4/0	#4	2-1/2°C	Yes	
2P2A	NEMA 1	SURFACE	208Y/120	3	4	225A	NO	10	225 A	225 A	BOLT-ON	CU	#4#4/0	#4	2-1/2°C	Yes	
2P3A	NEMA 1	SURFACE	208Y/120	3	4	225A	NO	10	225 A	225 A	BOLT-ON	CU	#4#4/0	#4	2-1/2°C	Yes	
2M1	NEMA 1	SURFACE	208Y/120	3	4	MLO	NO	10	125 A	125 A	BOLT-ON	CU	#4#1/0	#6	2°C	No	
2P1B	NEMA 1	SURFACE	208Y/120	3	4	MLO	NO	10	125 A	125 A	BOLT-ON	CU	#4#1/0	#6	2°C	No	
2P2B	NEMA 1	SURFACE	208Y/120	3	4	MLO	NO	10	125 A	125 A	BOLT-ON	CU	#4#1/0	#6	2°C	No	
2EP**	NEMA 1	SURFACE	208Y/120	3	4	100A	NO	10	100 A	100 A	BOLT-ON	CU	#4#1	#6	1-1/2°C	No	
2NP1	NEMA 1	SURFACE	208Y/120	3	4	100A	NO	10	100 A	100 A	BOLT-ON	CU	#4#1	#6	1-1/2°C	Yes	

- NOTES
- ALL BUSSING COPPER, INCLUDING NEUTRAL AND GROUND
 - ALL PANEL LUGS 100 AMPS AND GREATER SHALL BE COPPER
 - ALL LUGS ON CIRCUIT BREAKERS GREATER THAN 400 AMPS SHALL BE COPPER
 - ALL PANELBOARD CABINETS SHALL BE DOOR IN DOOR CONSTRUCTION
 - PROVIDE SHUNT TRIP MAIN CIRCUIT BREAKER
 - **MINIMUM EQUIPMENT RATING. ALL EQUIPMENT SHALL BE FULLY RATED. SERIES RATINGS SHALL NOT BE ALLOWED
 - ***REFER TO TRANSFORMER SCHEDULE FOR MINI-POWERZONE 2EP REQUIREMENTS

MARK	PRIMARY		PHASE	WIRE	KVA	DEGREE °C	TYPE	PRIMARY FEEDER SIZE	SIZE GND TO 3/4" x 10' GND ROD	
	VOLTAGE	SECONDARY VOLTAGE							REBAR, WATER & BLDG STEEL	REBAR, WATER & BLDG STEEL
TX1	480	208Y/120VA	3	4	112.5	115	DRY	3#3/0 #6G, 2°C	#1/0	#1/0
TX2	480	208Y/120VA	3	4	112.5	115	DRY	3#3/0 #6G, 2°C	#2	#2
TX3	480	208Y/120VA	3	4	112.5	115	DRY	3#3/0 #6G, 2°C	#1/0	#1/0
TX1A	480	208Y/120VA	3	4	30	115	DRY	3#6 #10G, 1°C	#6	#6
TX2EP*	480	208Y/120VA	3	4	30	115	DRY	3#6 #10G, 1°C	#6	#6

*30KVA 480 - 208Y/120 3Ø MINI-POWERZONE EQUAL TO SQUARE-D MPZB50TZFSS-FAL34090-Q0B1100



FA SYSTEM GENERAL NOTES

ALL FIRE ALARM SYSTEMS CONDUITS SHALL BE 3/4" MIN. IN DIAMETER UNLESS OTHERWISE NOTED.
 VERIFY EXISTING DEVICES FROM OTHER PLANS. DO NOT INFER.
 DIMENSIONS INDICATED IN THIS PLAN SHALL BE AS SHOWN UNLESS OTHERWISE NOTED.
 UP SIZE WIRES AS REQUIRED DUE TO VOLTAGE DROPS AND ALL OTHER REASONS.
 PROVIDE NECESSARY PROGRAMMING TO INCORPORATE NEW DEVICES.

2 FIRE ALARM RISER DIAGRAM
 NOT TO SCALE

