

2701 1st Avenue S
Birmingham, AL 35233
T 205.879.4462
ONCNETWORK.COM

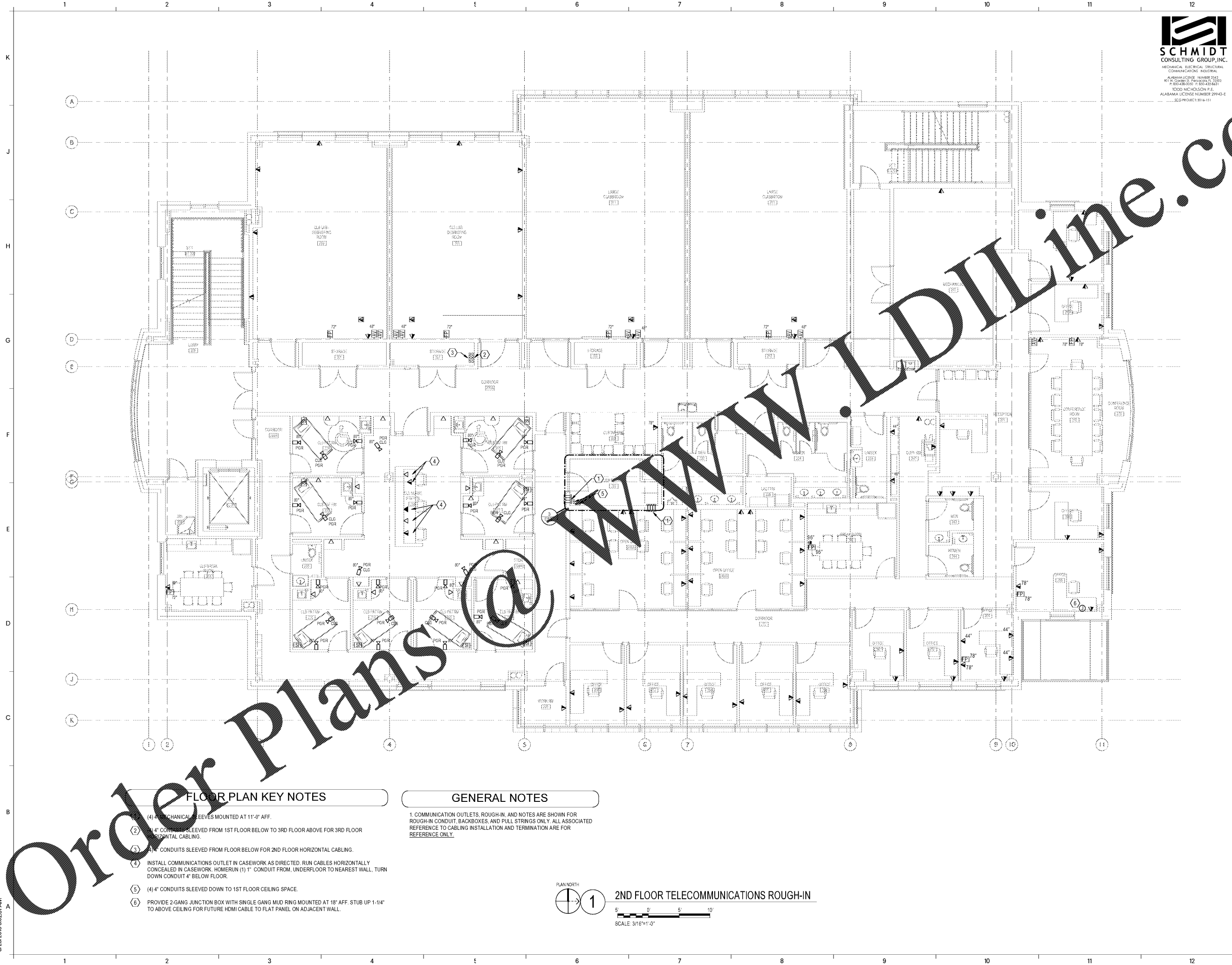
ISSUE	DATE
ISSUE FOR BID	2018.05.25

DRAWN BY: CEC
CHECKED BY: TAN

SIMULATION LABORATORY
BUILDING - USA JOB #16-07
MOBILE, ALABAMA
ABC #2017372
GMC # AMOB160019

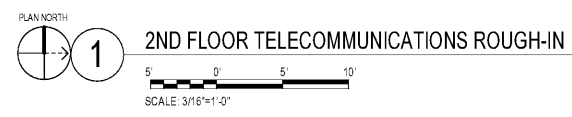


2ND FLOOR
TELECOMMUNICATIONS
ROUGH-IN PLAN
E505
Sheet 01 of 01



- FLOOR PLAN KEY NOTES**
- (4) 4" MECHANICAL SLEEVES MOUNTED AT 11"-0" AFF.
 - (2) 4" CONDUITS SLEEVED FROM 1ST FLOOR BELOW TO 3RD FLOOR ABOVE FOR 3RD FLOOR HORIZONTAL CABLING.
 - (3) 4" CONDUITS SLEEVED FROM FLOOR BELOW FOR 2ND FLOOR HORIZONTAL CABLING.
 - (4) INSTALL COMMUNICATIONS OUTLET IN CASEWORK AS DIRECTED. RUN CABLES HORIZONTALLY CONCEALED IN CASEWORK. HOMERUN (1) 1" CONDUIT FROM UNDERFLOOR TO NEAREST WALL, TURN DOWN CONDUIT 4" BELOW FLOOR.
 - (5) (4) 4" CONDUITS SLEEVED DOWN TO 1ST FLOOR CEILING SPACE.
 - (6) PROVIDE 2-GANG JUNCTION BOX WITH SINGLE GANG MUD RING MOUNTED AT 18" AFF. STUB UP 1-1/4" TO ABOVE CEILING FOR FUTURE HDMI CABLE TO FLAT PANEL ON ADJACENT WALL.

- GENERAL NOTES**
1. COMMUNICATION OUTLETS, ROUGH-IN, AND NOTES ARE SHOWN FOR ROUGH-IN CONDUIT, BACKBOXES, AND PULL STRINGS ONLY. ALL ASSOCIATED REFERENCE TO CABLING INSTALLATION AND TERMINATION ARE FOR REFERENCE ONLY.



5/23/2018 8:02:01 AM

A B C D E F G H J K

1 2 3 4 5 6 7 8 9 10 11 12