

SHEET NOTES

- ① ALL IN ONE ELEVATOR DISCONNECT SWITCH EQUAL TO BUSSMAN #PS1 T48 R2 K G N1 B F1 DISCONNECT SWITCH INCLUDES SHUNT-TRIP, FIRE SAFETY INTERFACE RELAY, FIRE ALARM VOLTAGE MONITORING RELAY, AND GROUND LUG. COORDINATE REQUIRED FUSE SIZE WITH ELEVATOR MANUFACTURER AND INSTALLER PRIOR TO INSTALLATION.
- ② PROVIDE 277V 30A SINGLE POLE FUSED SAFETY SWITCH WITH 20A FUSES FOR CONNECTION TO ELEVATOR CAB LIGHTS.
- ③ CONNECT DAC TO DCU-1 LOCATED OUTSIDE OF BUILDING. REFER TO MECHANICAL EQUIPMENT SCHEDULE FOR WIRE AND CONDUIT SIZE.
- ④ CONNECT DAC TO DCU-2 LOCATED OUTSIDE OF BUILDING. REFER TO MECHANICAL EQUIPMENT SCHEDULE FOR WIRE AND CONDUIT SIZE.
- ⑤ PROVIDE 2#12, #126, 3/4" C FROM OUTSIDE UNIT TO INTERIOR DUCTLESS SPLIT.
- ⑥ PROVIDE JUNCTION BOX FOR CONNECTION TO AHU UV AND MAINTENANCE LIGHTING. COORDINATE EXACT LOCATION WITH MECHANICAL CONTRACTOR PRIOR TO ROUGH-IN.



2701 1st Avenue S
Birmingham, AL 35233
T 205.879.4462
OMCNETWORK.COM

| ISSUE DATE | ISSUE FOR BID |
|------------|---------------|
| | 2018.05.25 |

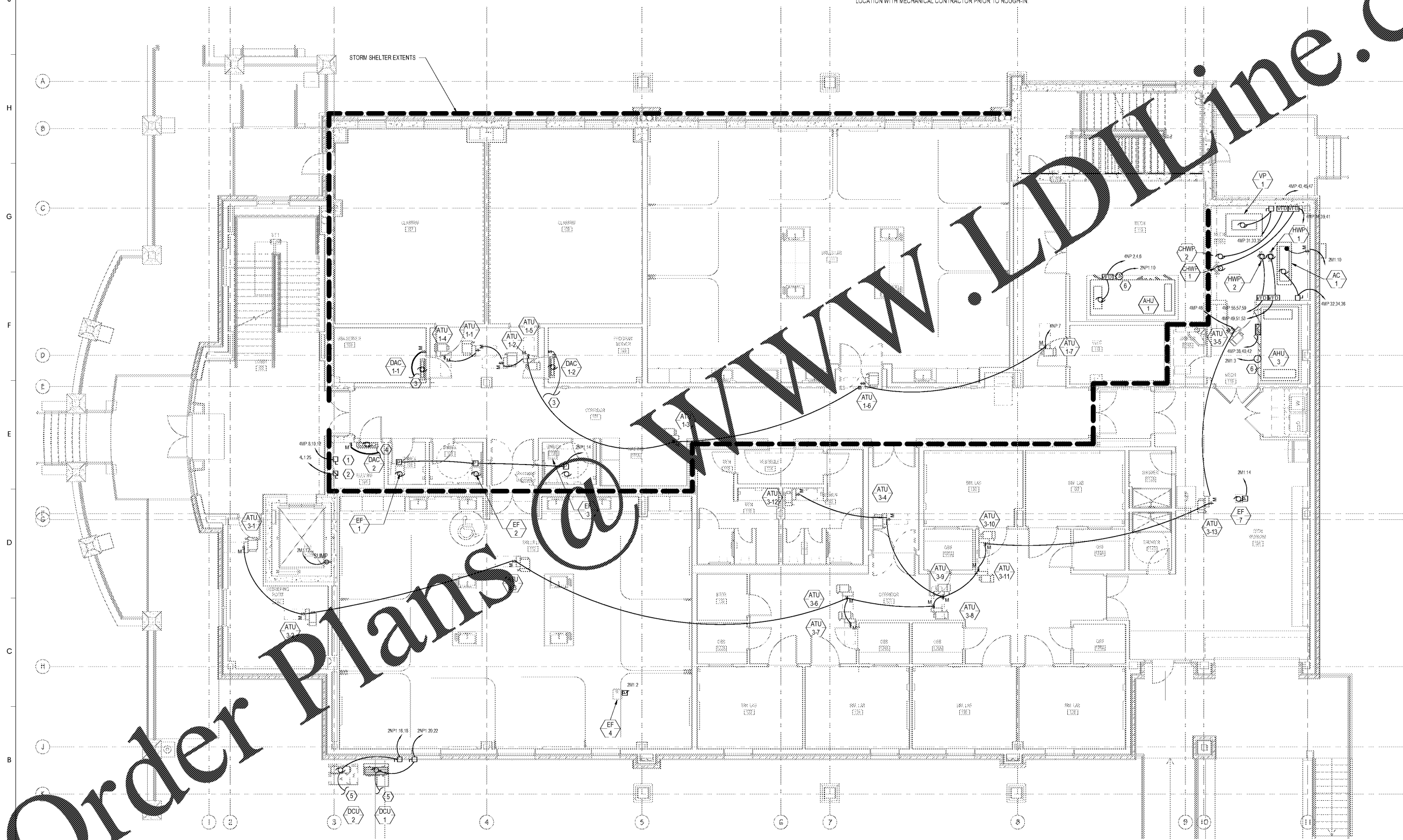
SIMULATION LABORATORY
BUILDING - USA JOB #16-07
MOBILE, ALABAMA
ABC #2017372
GMC # AMOB160019



1ST FLOOR
MECHANICAL POWER
PLAN
E401

5/23/2018 8:01:36 AM

PLAN NORTH
1 1ST FLOOR MECHANICAL POWER PLAN
SCALE: 3/16"=1'-0"



Order Plans @ www.lidline.com

www.lidline.com