

SHEET NOTES

- ① 200A NEMA 1 3 POLE HEAVY DUTY SAFETY SWITCH. REFER TO SINGLE LINE DIAGRAM FOR ADDITIONAL REQUIREMENTS.
- ② NEMA L5-30R RECEPTACLE. HOMERUN SHALL BE 2#10, #106, 3/4" C
- ③ 30A/3 POLE NEMA 1 SAFETY SWITCH FOR CONNECTION TO SKYFOLD PARTITION WALL SYSTEM. COORDINATE EXACT LOCATION AND REQUIREMENTS WITH EQUIPMENT PROVIDED. HOMERUN SHALL BE 3#10, #106, 3/4" C
- ④ SKYFOLD PARTITION WALL SYSTEM FACTORY PROVIDED CONTROL SWITCH. COORDINATE EXACT LOCATION OF SWITCH WITH MANUFACTURER REQUIREMENTS AND ARCHITECT. PROVIDE 3/4" CONDUIT FROM PARTITION ELECTRICAL BOX TO SWITCH LOCATIONS. REFER TO MANUFACTURER INSTALLATION REQUIREMENTS FOR CABLE REQUIREMENTS.

**SCHMIDT**  
CONSULTING GROUP, INC.  
MECHANICAL ELECTRICAL STRUCTURAL  
COMMUNICATIONS INDUSTRIAL  
ALABAMA LICENSE NUMBER 29143-E  
WITH CONSTRUCTION PERMISSION # 172599  
P.O. BOX 480007 • FORT SMITH, AR 72307  
TODD NICHOLSON, P.E.  
ALABAMA LICENSE NUMBER 29943-E  
SC10 PROJECT 2018-131

2701 1st Avenue S  
Birmingham, AL 35233  
T 205.879.4462  
ONCNETWORK.COM

ISSUE	DATE
ISSUE FOR BID	2018.05.25

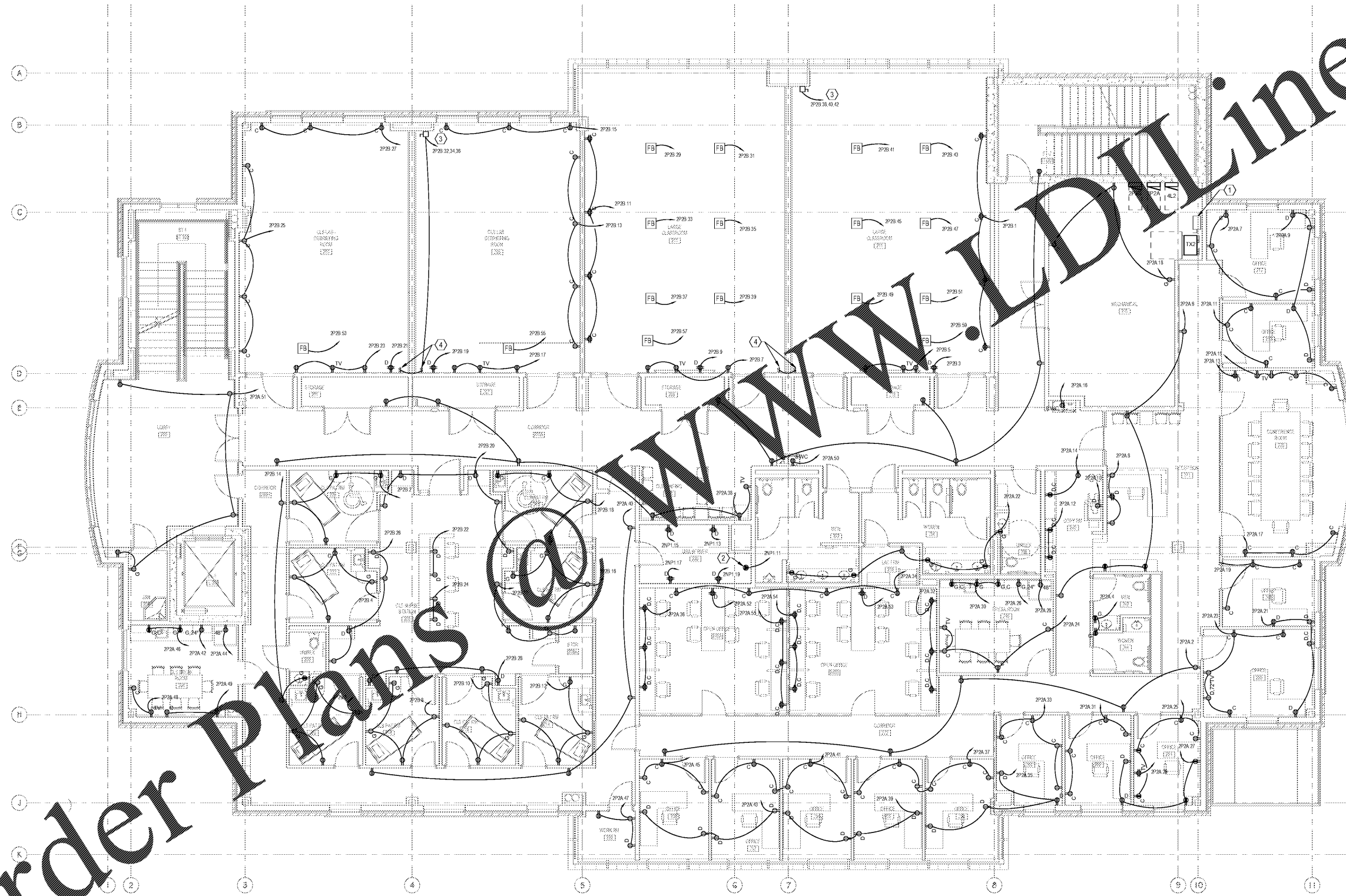
DRAWN BY: JTH  
CHECKED BY: TAN

SIMULATION LABORATORY  
BUILDING - USA JOB #16-07  
MOBILE, ALABAMA  
ABC #2017372  
GMC # AMOB160019



2ND FLOOR POWER  
PLAN

E302  
Sheet of



PLAN NORTH  
① 2ND FLOOR POWER PLAN  
SCALE 3/16"=1'-0"

5/23/2018 8:01:24 AM