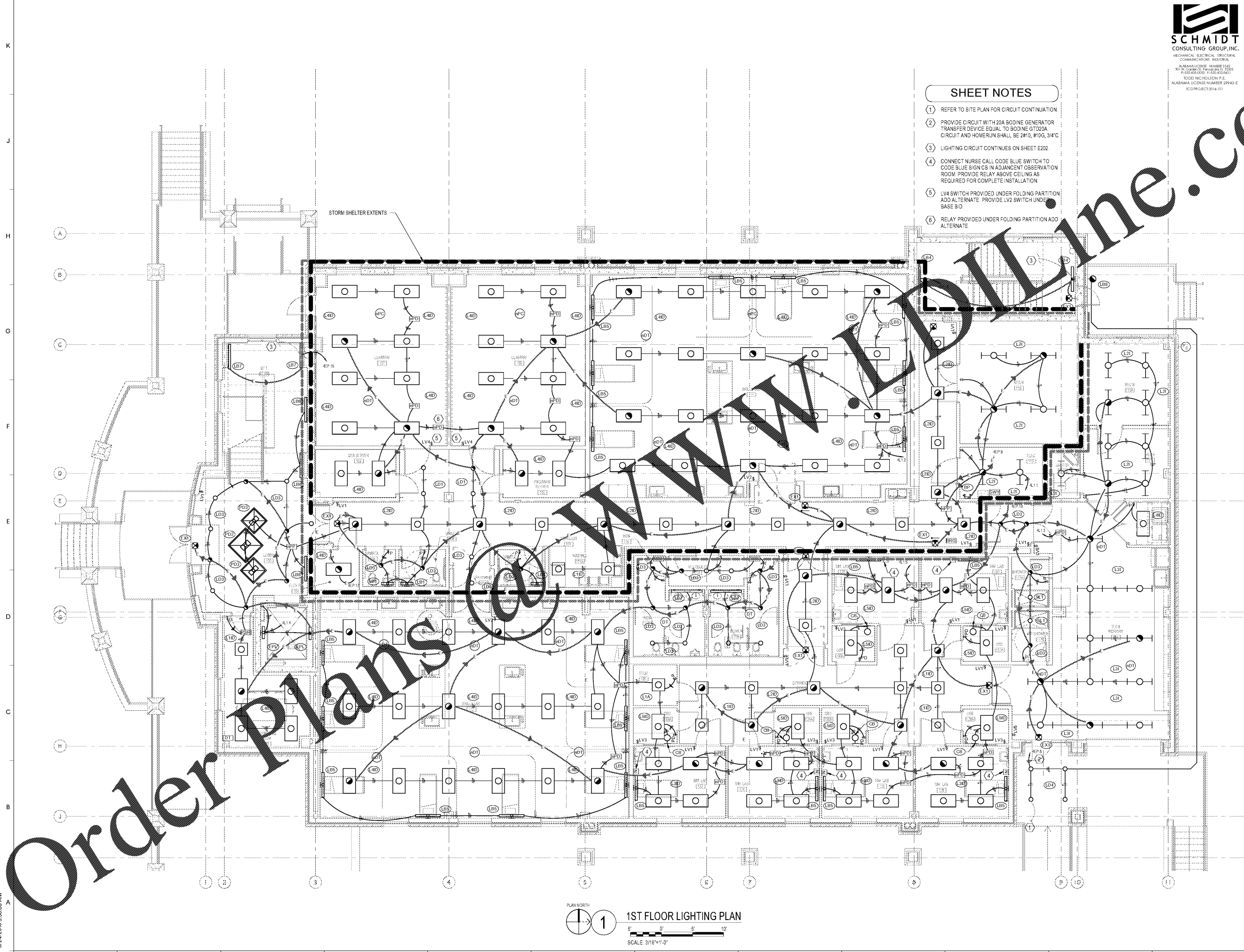


**SHEET NOTES**

- (1) REFER TO SITE PLAN FOR CIRCUIT CONTINUATION
- (2) PROVIDE CIRCUIT WITH 20A BODINE GENERATOR TRANSFER DEVICE EQUAL TO BODINE GTD20A CIRCUIT AND HOMERUN SHALL BE 2#10, #100, 3/4" C
- (3) LIGHTING CIRCUIT CONTINUES ON SHEET E202.
- (4) CONNECT NURSE CALL CODE BLUE SWITCH TO CODE BLUE SIGNS IN ADJACENT OBSERVATION ROOM. PROVIDE RELAY ABOVE CEILING AS REQUIRED FOR COMPLETE INSTALLATION.
- (5) LV4 SWITCH PROVIDED UNDER FOLDING PARTITION. ADD ALTERNATE. PROVIDE LV2 SWITCH UNDER BASE BID.
- (6) RELAY PROVIDED UNDER FOLDING PARTITION. ADD ALTERNATE.



5/24/2019 9:50:38 AM

**Order Plans**

PLAN NORTH



**1** 1ST FLOOR LIGHTING PLAN

5' 0' 5' 10'  
SCALE 3/16"=1'-0"

**1ST FLOOR LIGHTING  
PLAN**

**E201**  
Sheet of

SIMULATION LABORATORY  
BUILDING - USA JOB #16-07  
MOBILE, ALABAMA  
ABC #2017372  
GMC # AMOB160019



**ISSUE DATE**

ISSUE FOR BID 2019.05.25

DRAWN BY: JTH  
CHECKED BY: TAN