

SHEET NOTES

- ① ROUTE (2) 2" CONDUIT SLEEVED UNDERGROUND AT 30" BELOW FINISHED GRADE FROM TELECOMMUNICATIONS ROOM STUBBED OUT TO SITE. CONTRACTOR TO VERIFY LOCATION. PROVIDE CONTINUOUS WARNING TAPE OVER BURIED CONDUIT AT 12" BELOW FINISHED GRADE. INSTALL 3/8" MARKED PULL TAPE IN CONDUIT. REFER TO DETAIL 1/E606
- ② TURN CONDUIT, TERMINATE CONDUIT AT 30" BELOW FINISHED GRADE. END BELL SLEEVE SEAL FLOOR PENETRATION PER SPECIFICATION. ALL COLLEGE HAS INSTALLED FIBER OPTIC CABLEING
- ③ PAD MOUNT TRANSFORMER PROVIDED AND INSTALLED BY OWNER
- ④ DIESEL GENERATOR WITH FEMA 302, 150 KW, 208/240V, 60 HZ, 90MPH VERTICLE MISSILE IMPACT, 100% HORIZONTAL MISSILE IMPACT RATED ENCLOSURE AND FUEL TANK. REFER TO SINGLE LINE DIAGRAM FOR ADDITIONAL INFORMATION
- ⑤ UNDERGROUND SECONDARY BY CONTRACTOR. OWNER TO PROVIDE TWO (2) 4" CONDUITS STUBBED OUT FROM TRANSFORMER PAD. INTERCEPT CONDUITS AND EXTEND TO MAIN PANEL 4M'. REFER TO SINGLE LINE DIAGRAM FOR ADDITIONAL INFORMATION. PROVIDE ADDITIONAL ONE (1) 4" SPARE CONDUIT TO TRANSFORMER PAD
- ⑥ PROVIDE (2) 2" CONDUITS AND (3) 1" CONDUITS UNDERGROUND FROM GENERATOR TO FIRST FLOOR ELECTRICAL ROOM. CONDUITS SHALL SERVE: ATN, GENERATOR BLOCK HEATER, GENERATOR BATTERY CHARGER, AND GENERATOR CONTROLS. PROVIDE CONTINUOUS WARNING TAPE OVER BURIED CONDUIT AT 12" BELOW FINISHED GRADE. REFER TO DETAIL 1/E606 FOR BURIED CONDUIT REQUIREMENTS
- ⑦ REFER TO 1ST FLOOR LIGHTING PLAN FOR CIRCUIT CONTINUATION
- ⑧ GENERATOR BLOCK HEATER. MOUNT 30A/2 POLE NEMA 3R SAFETY SWITCH ON UNISTRUT FRAME. HOMERUN SHALL BE 2#8, #8G, 1" C RUN UNDERGROUND
- ⑨ GENERATOR BATTERY CHARGER. MOUNT 30A/1 POLE NEMA 3R SAFETY SWITCH ON UNISTRUT FRAME. HOMERUN SHALL BE 2#10, #10G, 1" C RUN UNDERGROUND
- ⑩ RED MUSHROOM STYLE WEATHERPROOF PUSH ON/PULL OFF EMERGENCY STOP BUTTON. PROVIDE RED SIGN WITH 1" TALL WHITE LETTERING THAT READS "EMERGENCY GENERATOR SHUT-OFF"
- ⑪ RECEPTACLES SHALL BE PROVIDED UNDER DIASTER TRAINING ADD ALTERNATE. HOMERUN SHALL BE 2#10, #10G, 3/4" C
- ⑫ CUT & PATCH DRIVE TO MATCH EXISTING CONDITIONS AS REQUIRED
- ⑬ CONNECT FIXTURE BACK TO STAIRWELL LIGHTING CIRCUIT
- ⑭ PROVIDE TAMPER AND FLOW SWITCHES IN UNDERGROUND FIRE LINE PIT. EXTERIOR VALVES AND BACKFLOW PREVENTER. COORDINATE EXACT LOCATION AND COUNT WITH CIVIL CONTRACTOR
- ⑮ FIXTURE PROVIDED UNDER FULL SIZE PATIO ADD ALTERNATE

ISSUE	DATE
ISSUE FOR BID	2018.05.25

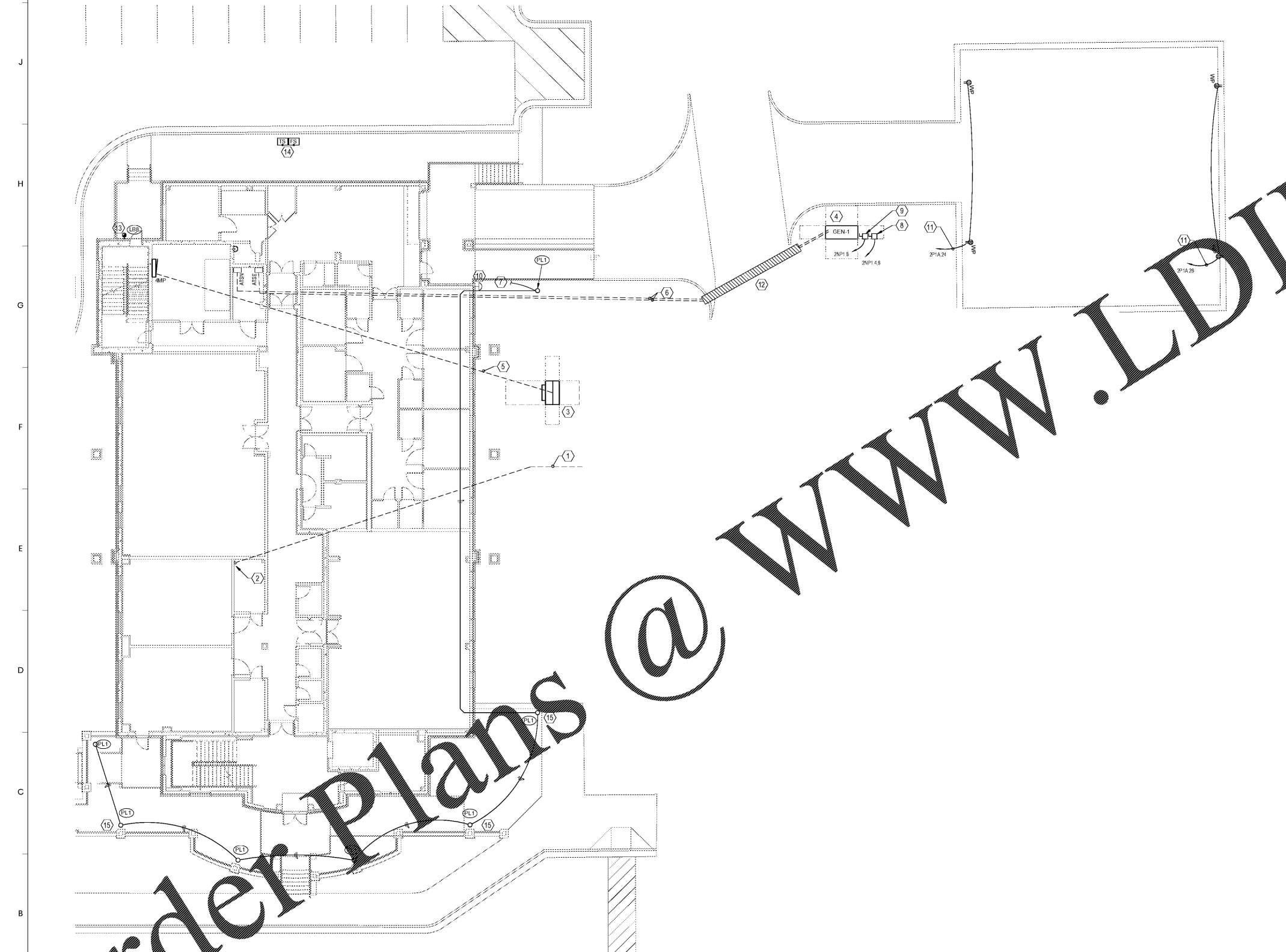
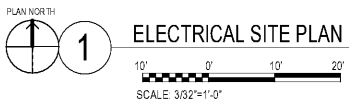
DRAWN BY: JTH
CHECKED BY: JTH

SIMULATION LABORATORY
BUILDING - USA JOB #16-07
MOBILE, ALABAMA
ABC #2017372
GMC # AMOB160019



ELECTRICAL SITE
PLAN
E100
sheet of

5/24/2018 9:50:24 AM



Order Plans @ WWW.LDININE.COM