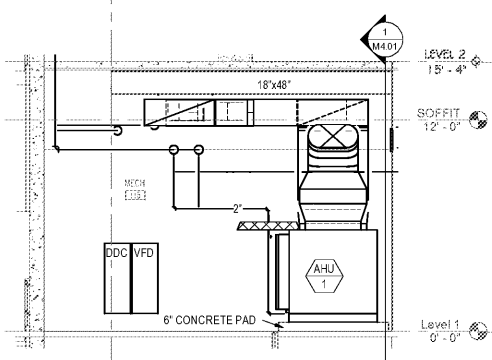
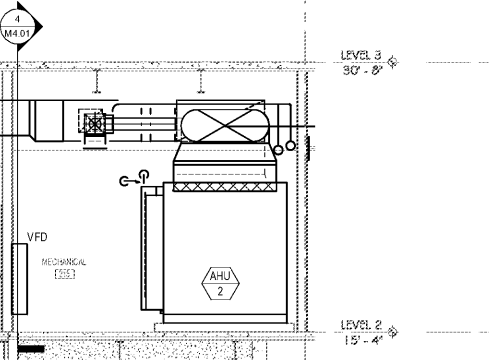


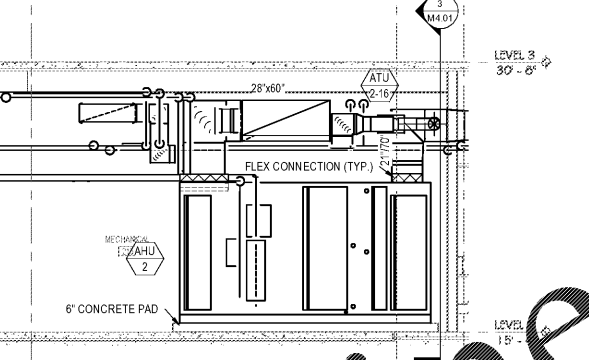
1 MECHANICAL ROOM SECTION
1/4" = 1'-0"



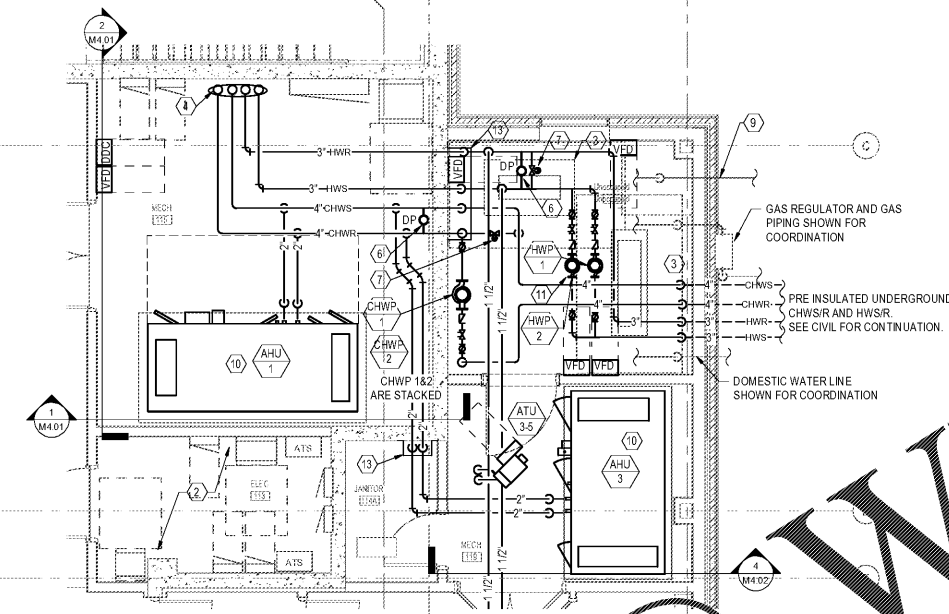
2 MECHANICAL ROOM SECTION
1/4" = 1'-0"



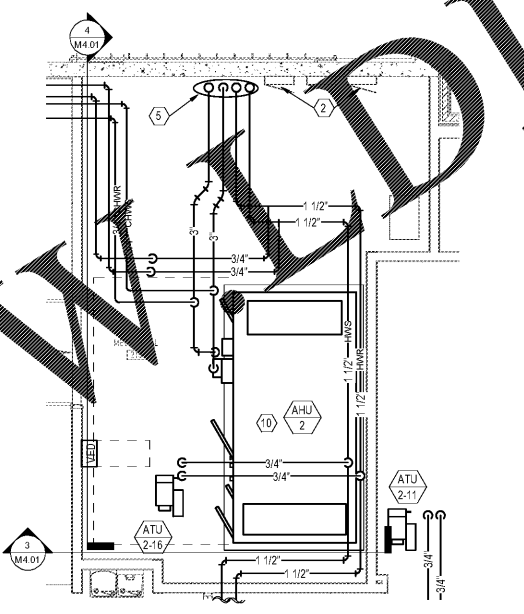
3 MECHANICAL ROOM SECTION
1/4" = 1'-0"



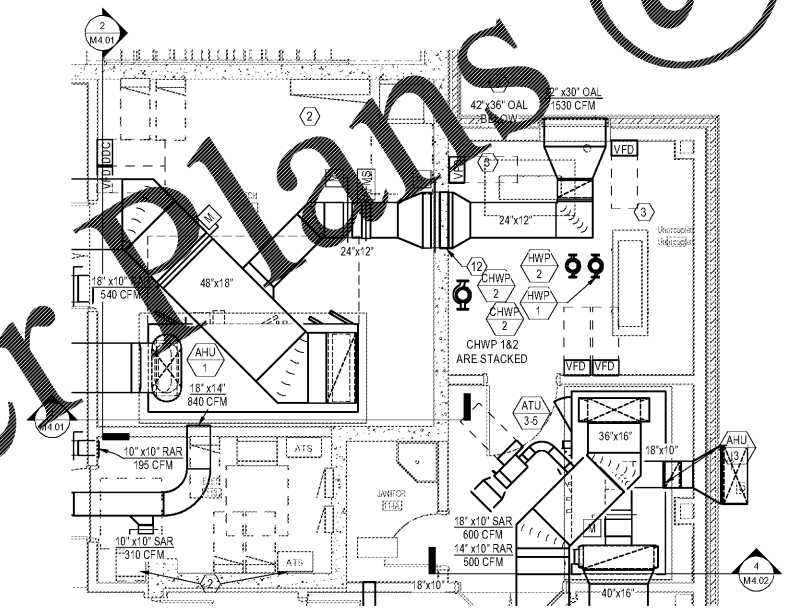
4 MECHANICAL ROOM SECTION
1/4" = 1'-0"



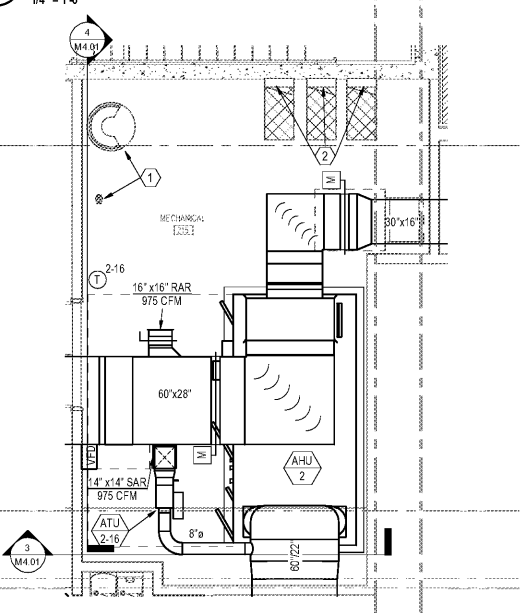
5 ENLARGED PIPING PLAN - 1ST FL MECH. RM.
1/4" = 1'-0"



6 ENLARGED PIPING PLAN - 2ND FL MECH. RM.
1/4" = 1'-0"



7 ENLARGED PLAN - 1ST FL MECH. RM.
1/4" = 1'-0"



8 ENLARGED PLAN - 2ND FL MECH. RM.
1/4" = 1'-0"

SHEET NOTES

- 1) GWH SHOWN FOR COORDINATION.
- 2) ELECTRICAL PANELS SHOWN FOR COORDINATION.
- 3) PLUMBING EQUIPMENT SHOWN FOR COORDINATION.
- 4) CHWS/R & HWS/R UP TO 2ND FLOOR.
- 5) PROVIDE 3" CHWS/R & 2" HWS/R UP TO 3RD FLOOR, FLOOR.
- 6) DIFFERENTIAL PRESSURE SENSOR.
- 7) MODULATION BYPASS VALVE.
- 8) PROVIDE OAL FOR PROVIDING INTAKE AIR FOR AIR COMPRESSOR AND VACUUM PUMP. MOUNT BOTTOM OF OAL +/- 2'-8" ABOVE FINISHED FLOOR. MOUNT BELOW 48"x24" OAL.
- 9) FIRE RISER SHOWN FOR COORDINATION.
- 10) ROUTE CONDENSATE TO FLOOR DRAIN.
- 11) MOUNT HOT WATER PUMPS AT +/- 7'-8", CLEAR FROM AIR COMPRESSOR CLEARANCE.
- 12) PROVIDE 38"x24" LOUVER WITHIN OUTSIDE AIR DUCT AT STORM SHELTER WALL PENETRATION. LOUVER SHALL BE UL CLASSIFIED, AND MEET THE ICC 500 GUIDELINES FOR DEBRIS IMPACT, SIMILAR TO GREENHECK AFL-501.
- 13) REFER TO DETAIL 10 ON SHEET M5.03 FOR SHELTER WALL PIPE PENETRATION. TYPICAL FOR ALL PIPE PENETRATIONS THROUGH THE SHELTER WALL.

GENERAL NOTES

1. MOUNT AIR HANDLING UNITS ON 6" CONCRETE PAD.
2. ROUTE CONDENSATE FROM AIR HANDLING UNITS TO FLOOR DRAIN.
3. VFD'S SHALL BE OWNER PROVIDED, CONTRACTOR INSTALLED. COORDINATE WITH OWNER.

ISSUE DATE	ISSUE FOR
2019.05.25	BID

SIMULATION LABORATORY
BUILDING - USA JOB #16-07
MOBILE, ALABAMA
ABC #2017372
GMC # AMOB160019



ENLARGED PLANS & SECTIONS

M4.01
Sheet of

Order Plans @ WWW.DIline.com