

5/21/2016 13:29 PM

K
J
H
G
F
E
D
C
B
A

Order Plans@www.dline.com

SHEET NOTES

- 1 MOUNT UNIT AND SECURE TO 4" CONCRETE PAD ON GRADE.
- 2 STORM SHELTER EXTENTS.
- 3 LOCATE DAL WITHIN SOFFIT.
- 4 ROUTE 4" DUCT FROM DRYER TO SIDEWALL DRYER VENT WALL CAP. PROVIDE CAP WITH BIRD SCREEN, SIMILAR TO BROAN. COORDINATE WITH ARCHITECT FOR WALL CAP FINISH.
- 5 REFER TO DETAIL 10 ON SHEET M5.03 FOR SHELTER WALL PIPE PENETRATION. TYPICAL FOR ALL PIPE AND ROUND DUCT PENETRATIONS THROUGH THE SHELTER WALL.

SCHMIDT
CONSULTING GROUP, INC.
MECHANICAL, ELECTRICAL, STRUCTURAL,
COMMUNICATIONS, INDUSTRIAL
ALABAMA LICENSE NUMBER 25171
WILLIAM JOSEPH JONES, P.E.
WILLIAM JOSEPH JONES, P.E.
ALABAMA LICENSE NUMBER 25171
SC010002016-151

2701 1st Avenue S
Birmingham, AL 35233
T 205.879.4462
ONCNETWORK.COM

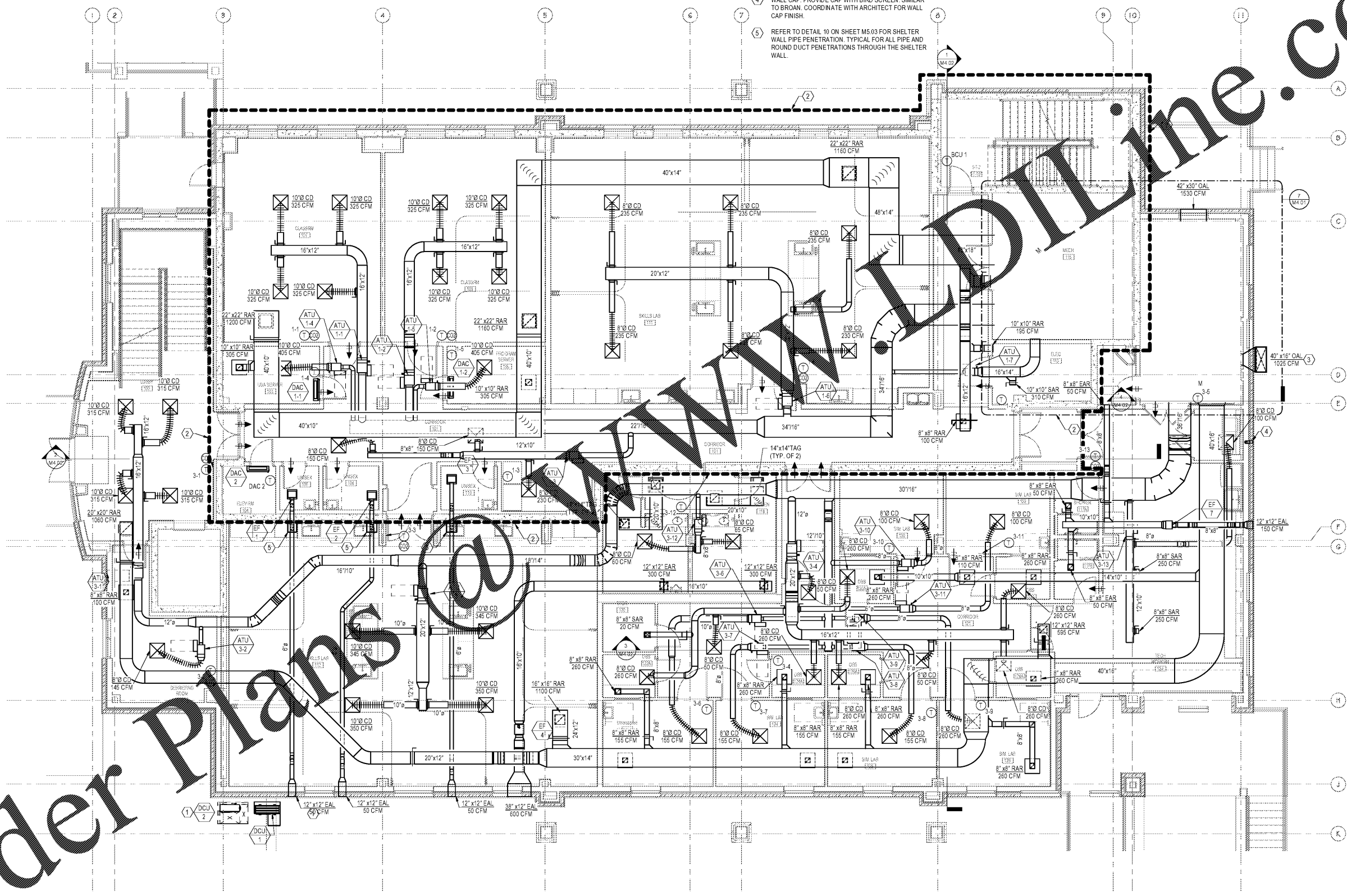
ISSUE DATE	ISSUE FOR
2016.05.25	ISSUE FOR BID

SIMULATION LABORATORY
BUILDING - USA JOB #16-07
MOBILE, ALABAMA
ABC #2017372
GMC # AMOB160019

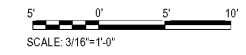


LEVEL 1 MECHANICAL
PLAN

M1.01
Sheet of



PLAN NORTH
1 LEVEL 1 - MECHANICAL PLAN
3/16" = 1'-0"



K
J
H
G
F
E
D
C
B
A