

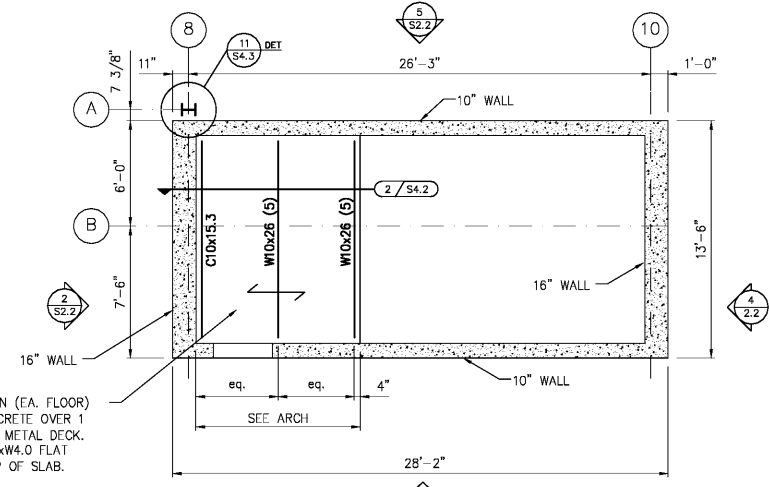
**BARTELL & ASSOCIATES, INC.**  
 Structural Engineers  
 1614 GOVERNMENT ST.  
 MOBILE, AL 36604-1102  
 PH. 251-473-8354  
 FAX 251-473-8356  
 © Copyright 2017, Bartell & Associates, Inc.

**GMC**

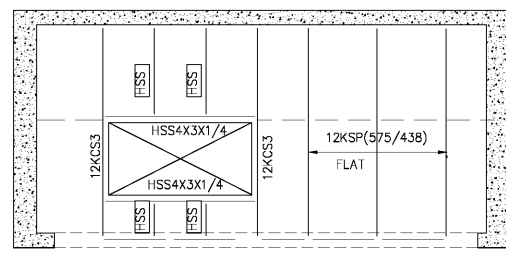
2701 1st Avenue S  
 Birmingham, AL 35233  
 T 205.879.4462  
 GMCNETWORK.COM

ALABAMA  
 REGISTERED  
 PROFESSIONAL  
 ENGINEER  
 JAMES R. BARTELL  
 05/24/2018

TYPICAL LANDING FRAMING SHOWN (EA. FLOOR)  
 3 1/2" CLEAR NORMAL WT. CONCRETE OVER 1  
 1/2" 20 GAGE GALV. COMPOSITE METAL DECK.  
 REINFORCE SLAB WITH 4x4-W4.0xW4.0 FLAT  
 SHEETS SET 1" CLEAR FROM TOP OF SLAB.

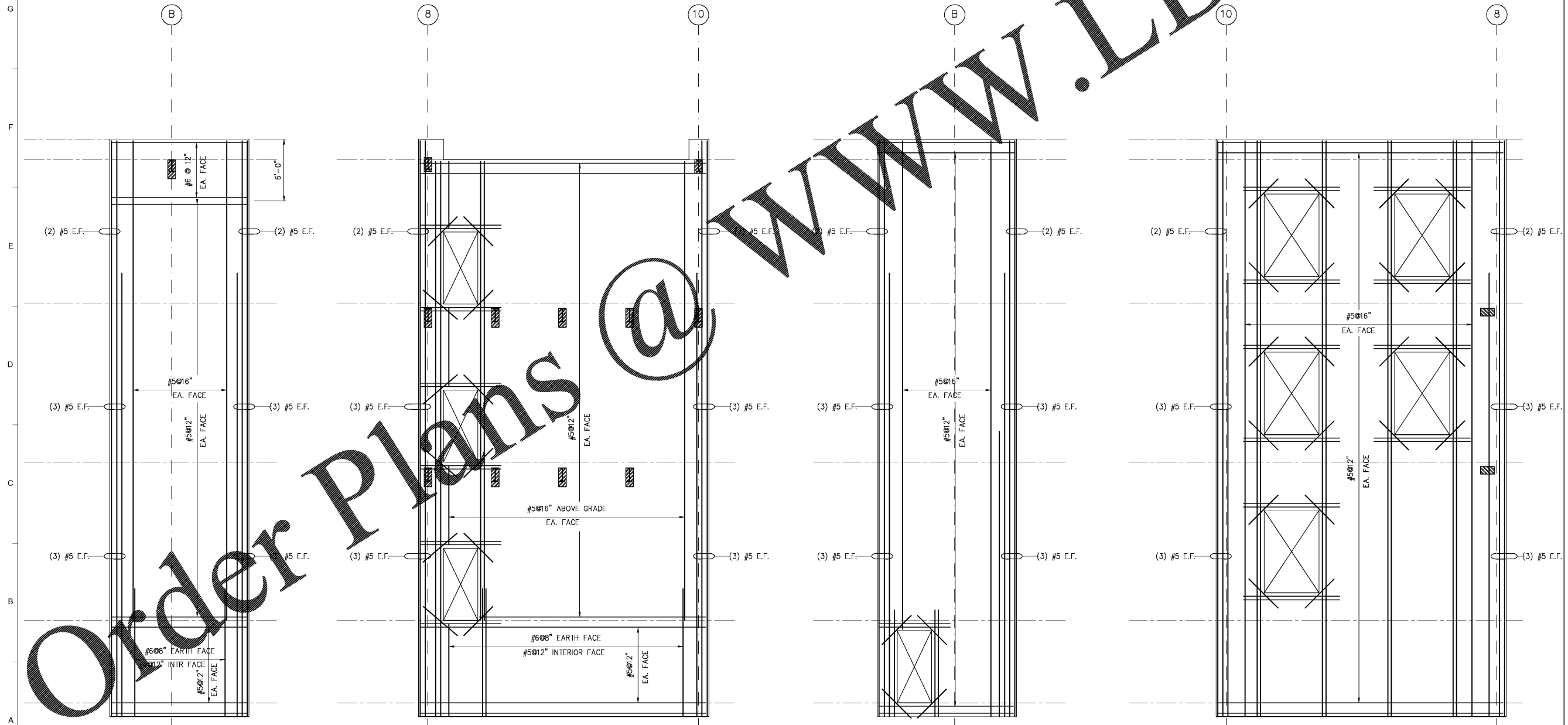


**PLAN AT STAIR**  
**DETAIL 1**  
 SCALE: 1/4"=1'-0" S2.2



**ENLARGED FRAMING PLAN**  
 ELEVATOR ROOF  
**DETAIL 6**  
 SCALE: 1/4"=1'-0" S2.2

[FISS] DENOTES HSS3 1/2 x 1/2 x 1/4 PLATWSE



**ELEVATION 2**  
 SCALE: 1/4"=1'-0" S2.2

**ELEVATION 3**  
 SCALE: 1/4"=1'-0" S2.2

**ELEVATION 4**  
 SCALE: 1/4"=1'-0" S2.2

**ELEVATION 5**  
 SCALE: 1/4"=1'-0" S2.2

USA SIMULATION LAB  
 MOBILE, ALABAMA  
 ABC # 2017372  
 GMC # AMOB160019

CONCRETE WALL - ENLARGED  
 PLANS AND ELEVATIONS

**S2.2**  
 SHEET OF

ISSUE	DATE
100% 2018.04.18	
Issue for Bid 2018.05.25	

DRAWN BY: ISCM  
 CHECKED BY: IJAR

Order Plans @ WWW.LDILine.com