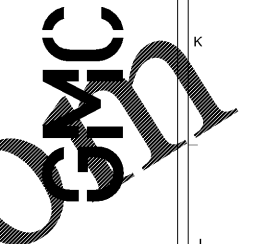
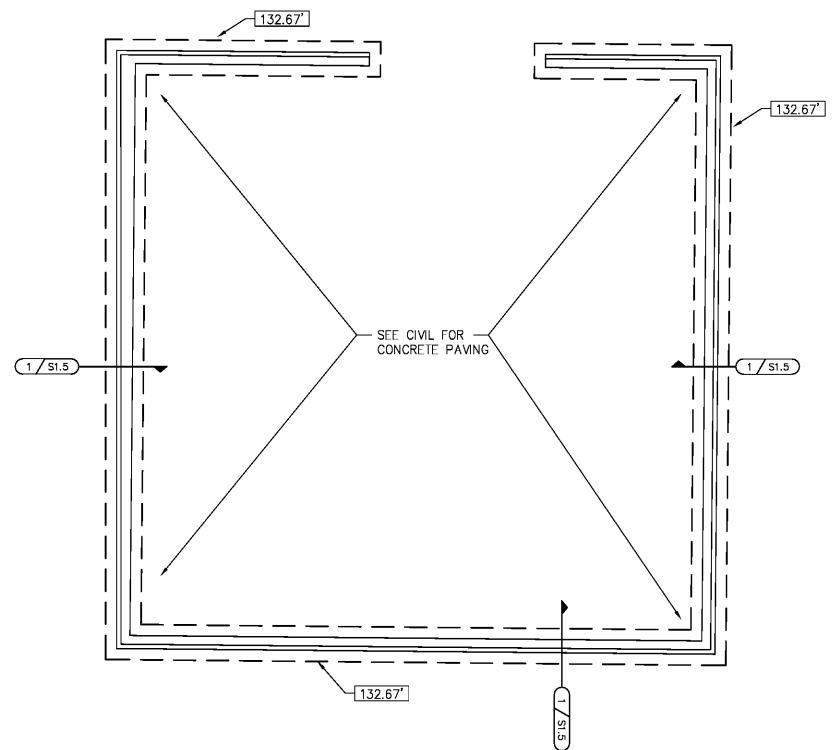


**BARTELL & ASSOCIATES, INC.**  
 Structural Engineers  
 1614 GOVERNMENT ST.  
 MOBILE, AL 36604-1102  
 PH. 251-473-8354  
 FAX 251-473-8356  
 © Copyright 2017, Barter & Associates, Inc.

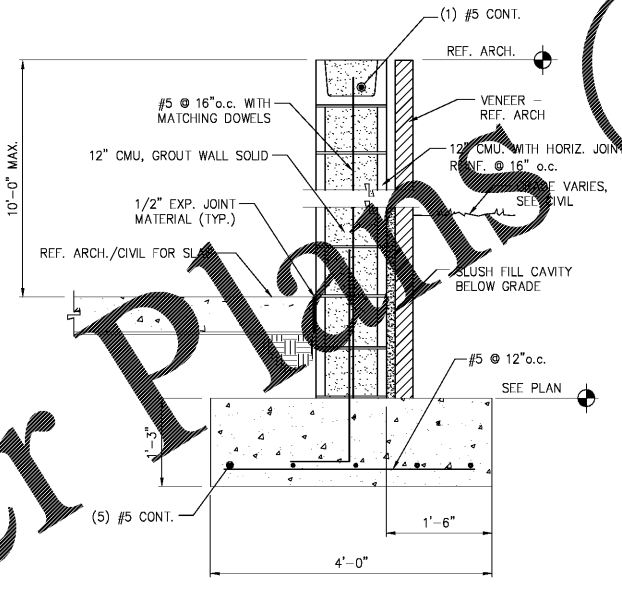


2701 1st Avenue S  
 Birmingham, AL 35233  
 T 205.879.4462  
 GMCNETWORK.COM

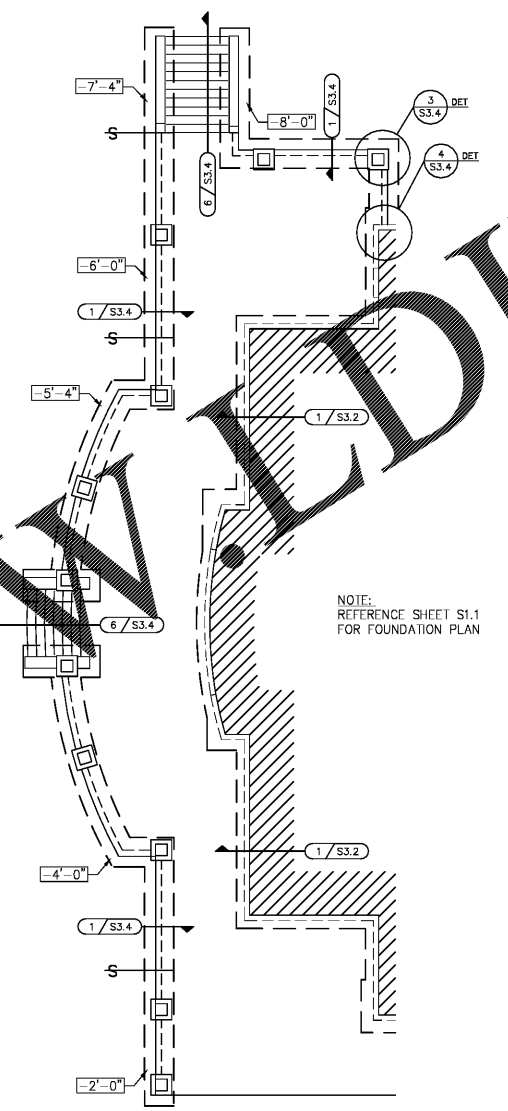


**BID ALTERNATE #1**  
**DISASTER TRAINING AREA FOUNDATION PLAN**  
 SCALE: 1/8"=1'-0"

**LEGEND**  
 [132.67'] TOP OF FOOTING ELEVATION



**TYPICAL 12" CMU SCREEN WALL**  
**SECTION 1**  
 SCALE: 1"=1'-0" S1.5



NOTE:  
 REFERENCE SHEET S1.1  
 FOR FOUNDATION PLAN

**BID ALTERNATE #3**  
**FRONT ENTRY PLAZA FOUNDATION PLAN**  
 SCALE: 1/8"=1'-0"

Order Plans @ WWW.LDLine.com

USA SIMULATION LAB  
 MOBILE, ALABAMA  
 ABC # 2017372  
 GMC # AMOB160019

DISASTER TRAINING AREA  
 FOUNDATION PLAN -  
 BID ALTERNATES

**S1.5**  
 SHEET OF

ISSUE	DATE
100% Issue for Bid	2018.04.18
	2018.05.25

DRAWN BY: ISGM  
 CHECKED BY: JAR