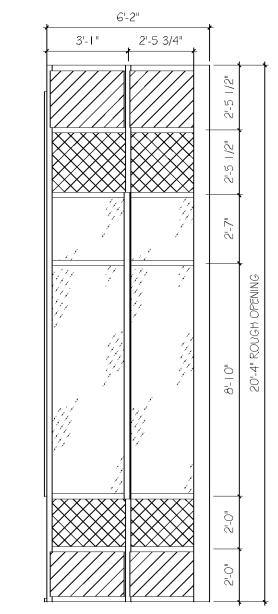
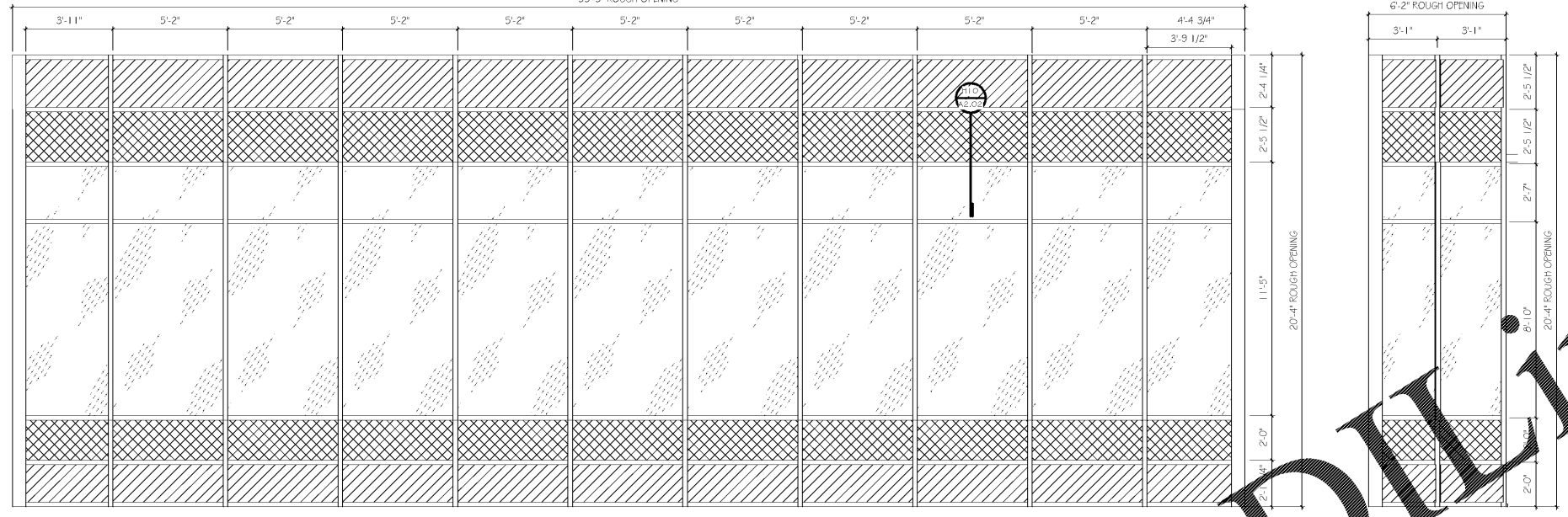


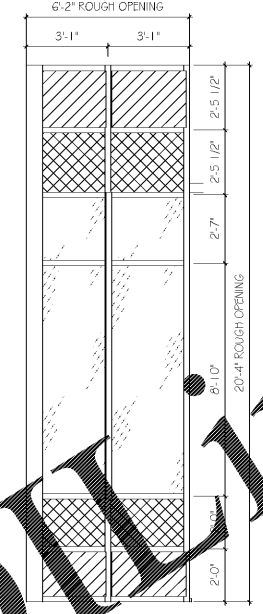
5/25/2019 4:14:11 PM



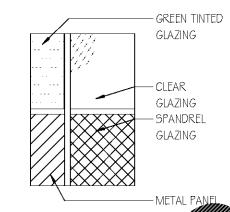
G1 CURTAIN WALL - C5A
SCALE: 3/8" = 1'-0"



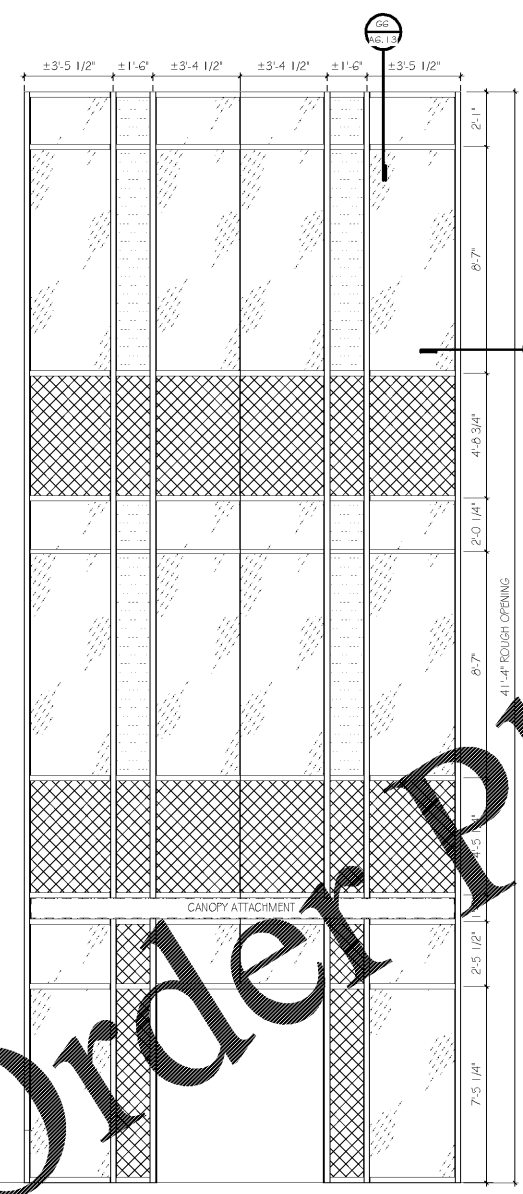
G3 CURTAIN WALL - C5B
SCALE: 3/8" = 1'-0"



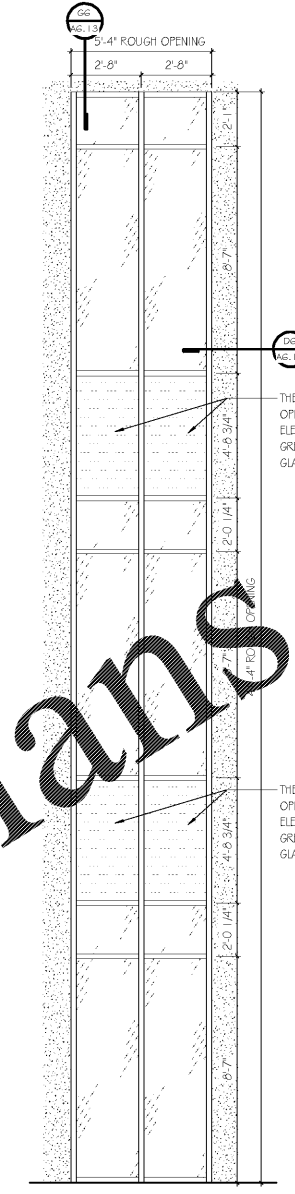
G16 CURTAIN WALL - C5C
SCALE: 3/8" = 1'-0"



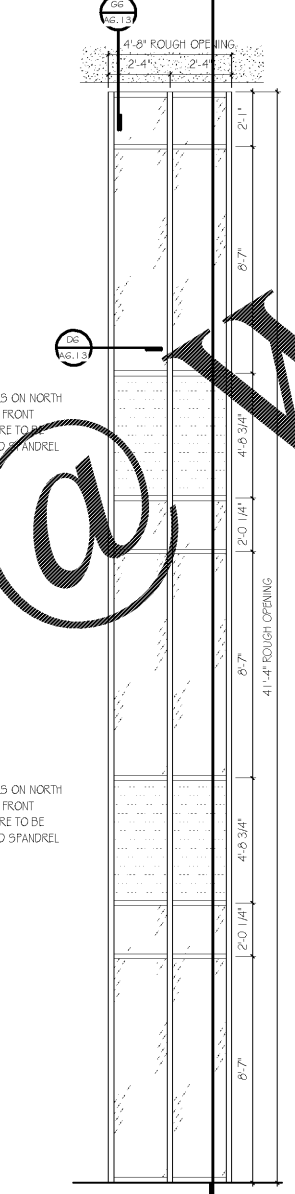
NOTE: C2, HAS TWO INSTANCES SOUTH OPENING HAS GREEN GLAZING, AS SHOW HERE, NORTH OPENING HAS GREEN TINT SPANDREL GLAZING AT THESE LOCATIONS.
PATTERN LEGEND
SCALE: 3/8" = 1'-0"



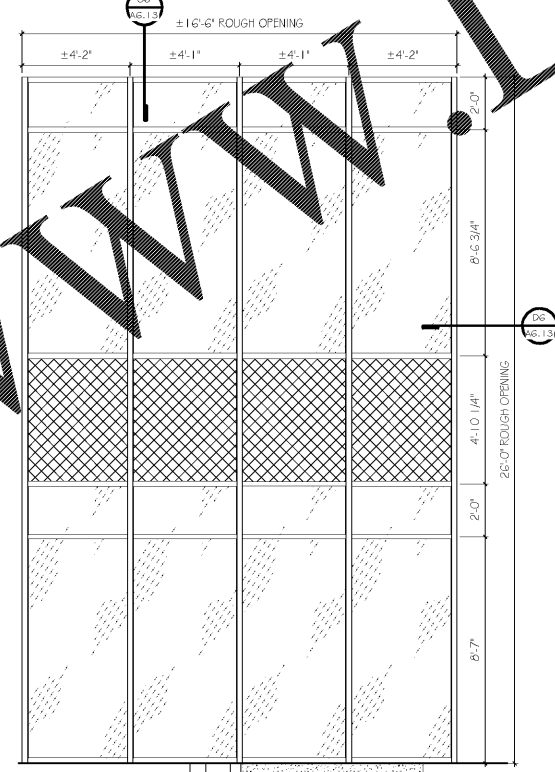
A1 CURTAIN WALL - C1
SCALE: 3/8" = 1'-0"



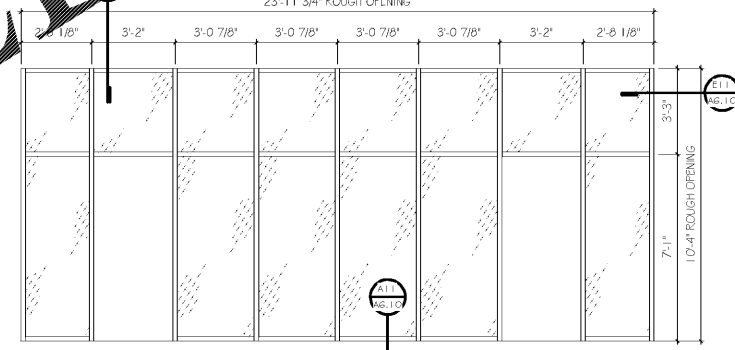
A4 CURTAIN WALL - C2
SCALE: 3/8" = 1'-0"



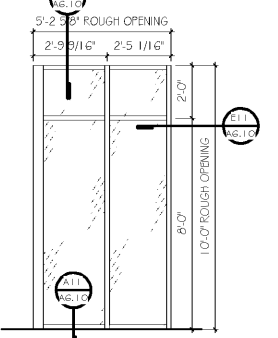
A5 CURTAIN WALL - C3
SCALE: 3/8" = 1'-0"



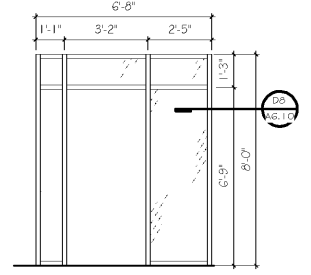
C7 CURTAIN WALL - C4
SCALE: 3/8" = 1'-0"



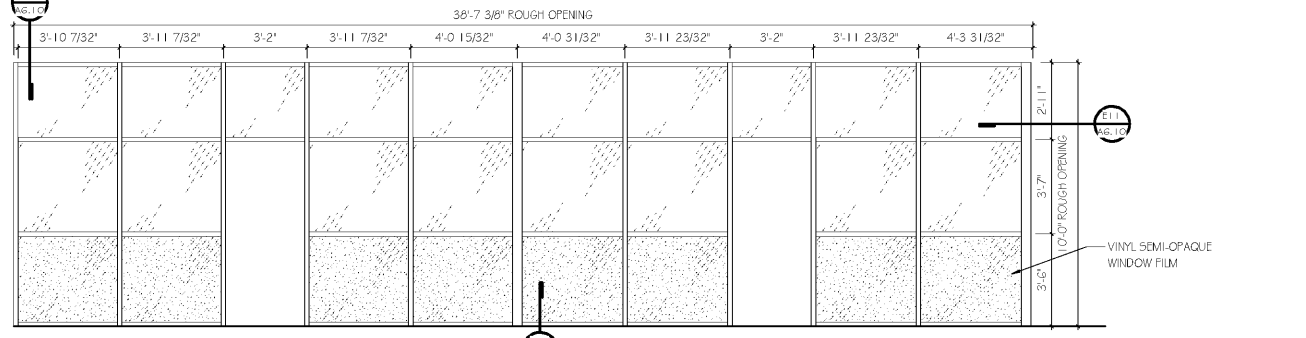
E9 S2 - STOREFRONT
SCALE: 3/8" = 1'-0"



C9 S1A - STOREFRONT
SCALE: 3/8" = 1'-0"



C11 S3 - STOREFRONT
SCALE: 3/8" = 1'-0"



A7 S1 - STOREFRONT
SCALE: 3/8" = 1'-0"

Order Plans @ www.ldilinc.com GMC

ISSUE DATE	ISSUE FOR BID
2019.05.25	

SIMULATION LABORATORY
BUILDING - USA JOB #16-07
MOBILE, ALABAMA
ABC #2017372
GMC # AMOB160019



CURTAIN WALL/STOREFRONT LEGEND & DETAILS
A6.12
Sheet of

2701 1st Avenue S
Birmingham, AL 35233
T 205.879.4462
GMCNETWORK.COM