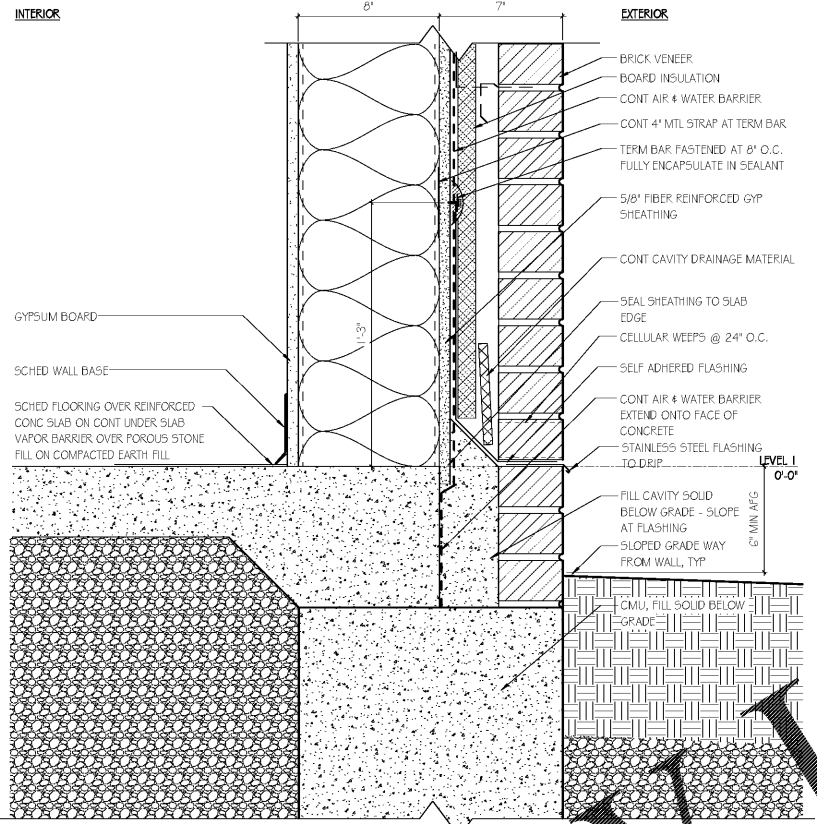
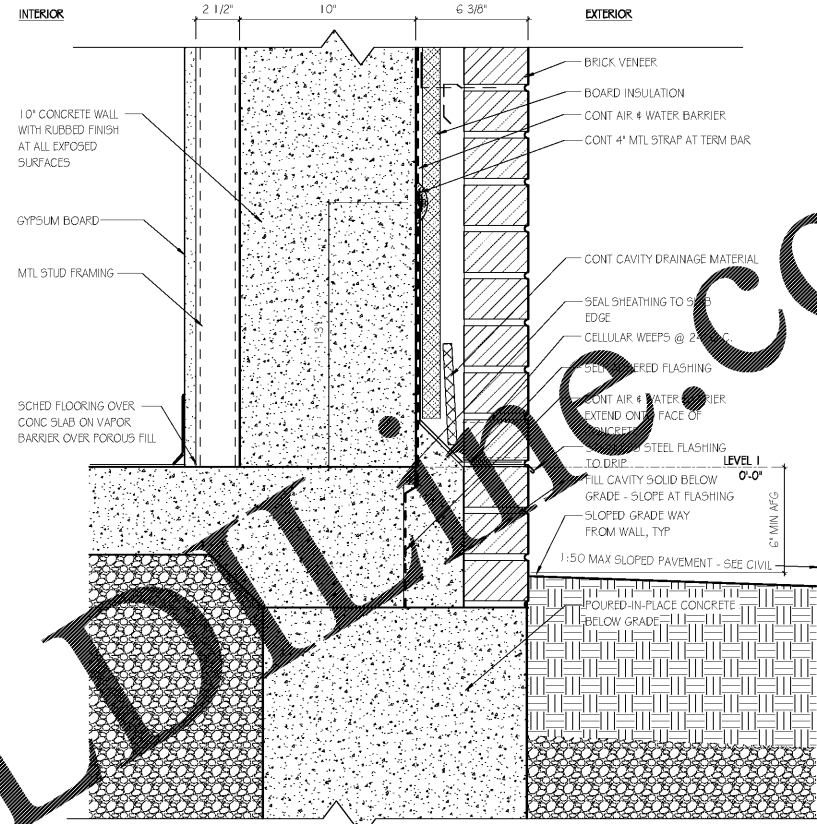


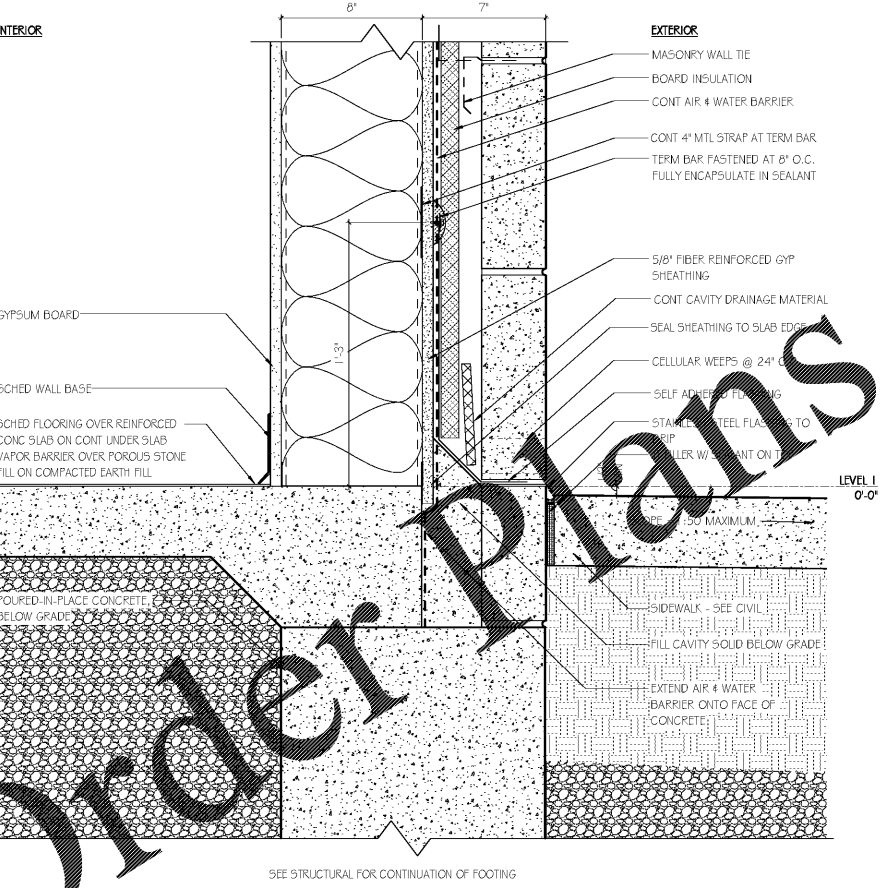
**F1 STUD & CAST STONE BASE @ GRADE**  
SCALE: 3" = 1'-0"



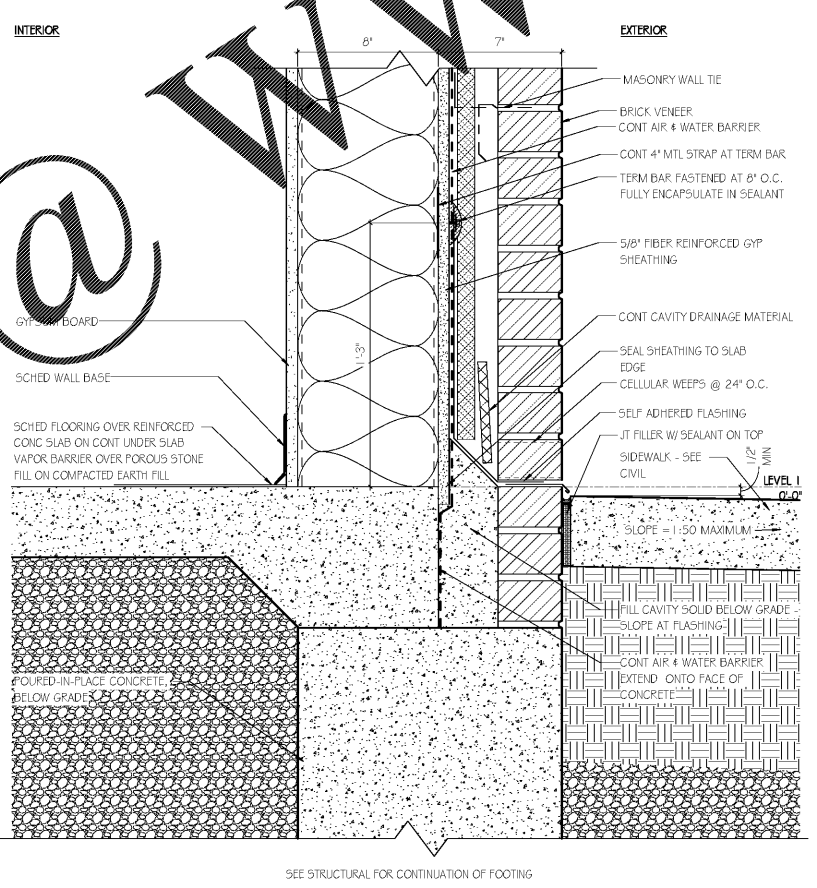
**F5 STUD & BRICK BASE @ GRADE**  
SCALE: 3" = 1'-0"



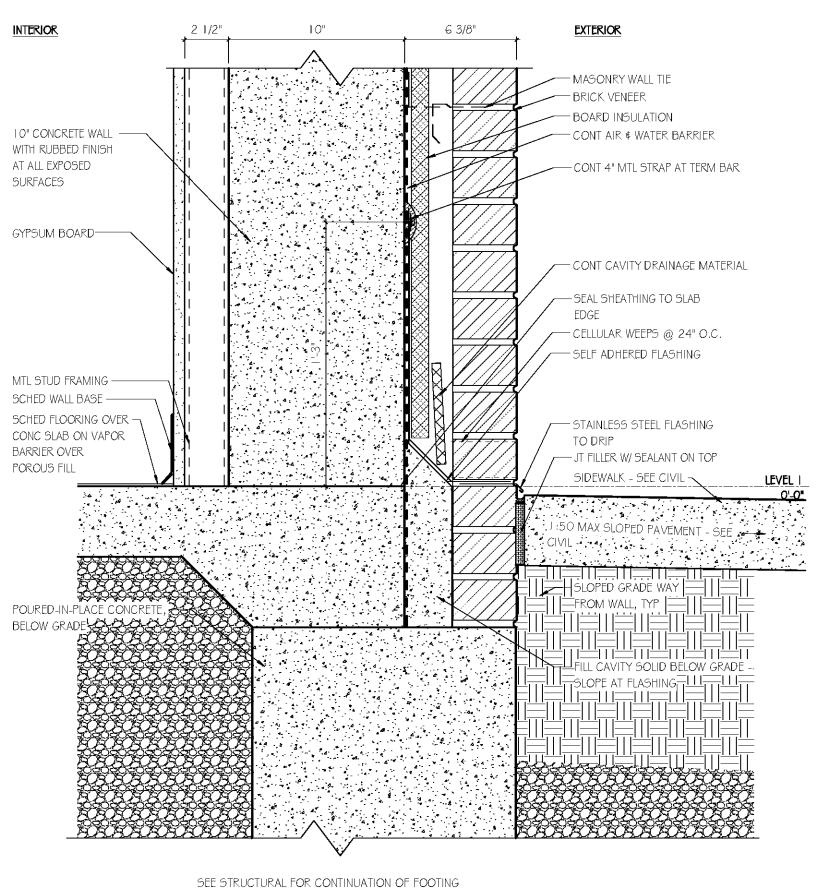
**F9 C.I.P. & BRICK BASE @ GRADE**  
SCALE: 3" = 1'-0"



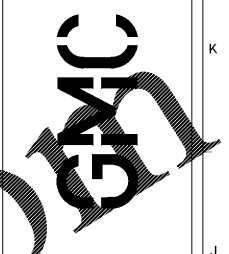
**A1 STUD & CAST STONE BASE @ SIDEWALK**  
SCALE: 3" = 1'-0"



**A5 STUD & BRICK BASE @ SIDEWALK**  
SCALE: 3" = 1'-0"



**A9 C.I.P. & BRICK BASE @ SIDEWALK**  
SCALE: 3" = 1'-0"



2701 1st Avenue S  
Birmingham, AL 35233  
T 205.879.4462  
GMCNETWORK.COM

| ISSUE         | DATE       |
|---------------|------------|
| ISSUE FOR BID | 2019.05.25 |

**SECTION DETAILS**  
SIMULATION LABORATORY  
BUILDING - USA JOB #16-07  
MOBILE, ALABAMA  
ABC #2017372  
GMC # AMOB160019



**A5.21**  
Sheet of

5/25/2019 4:13:26 PM