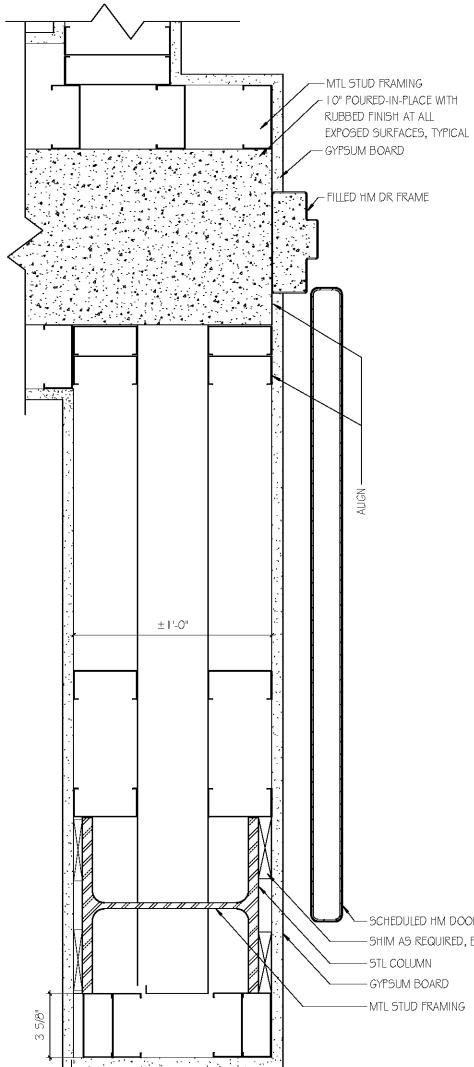
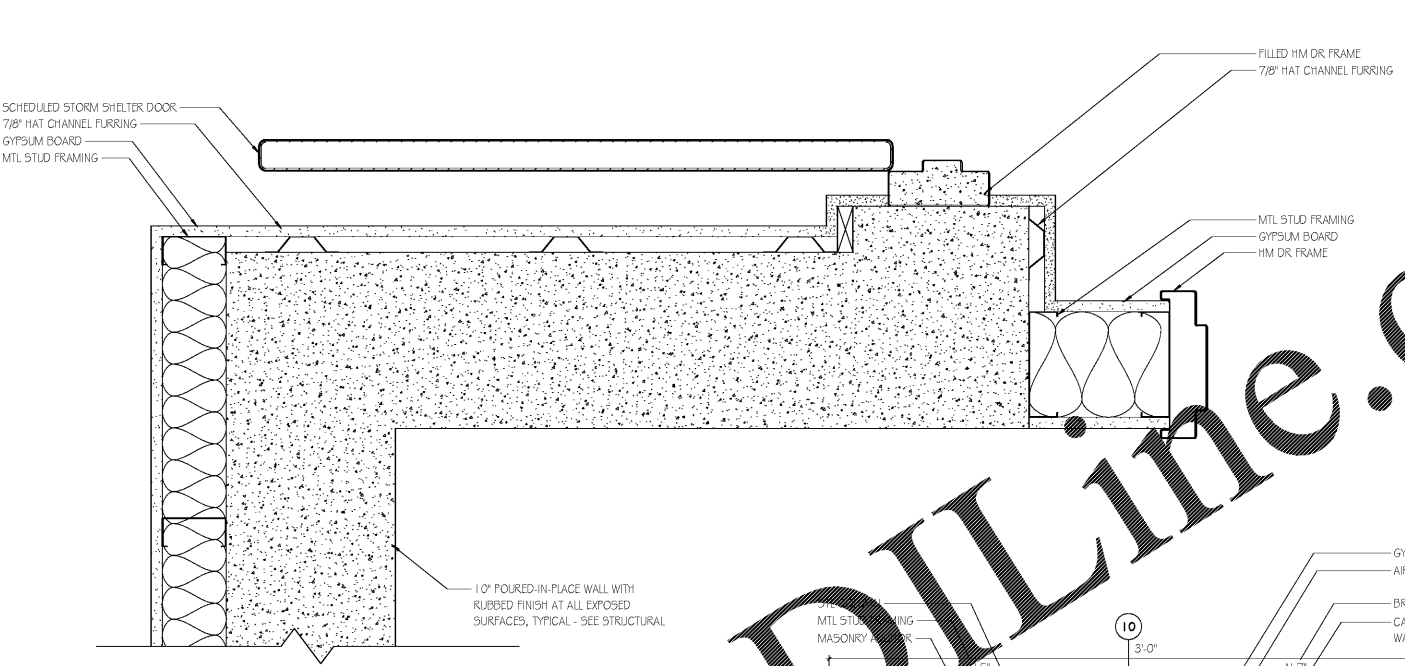


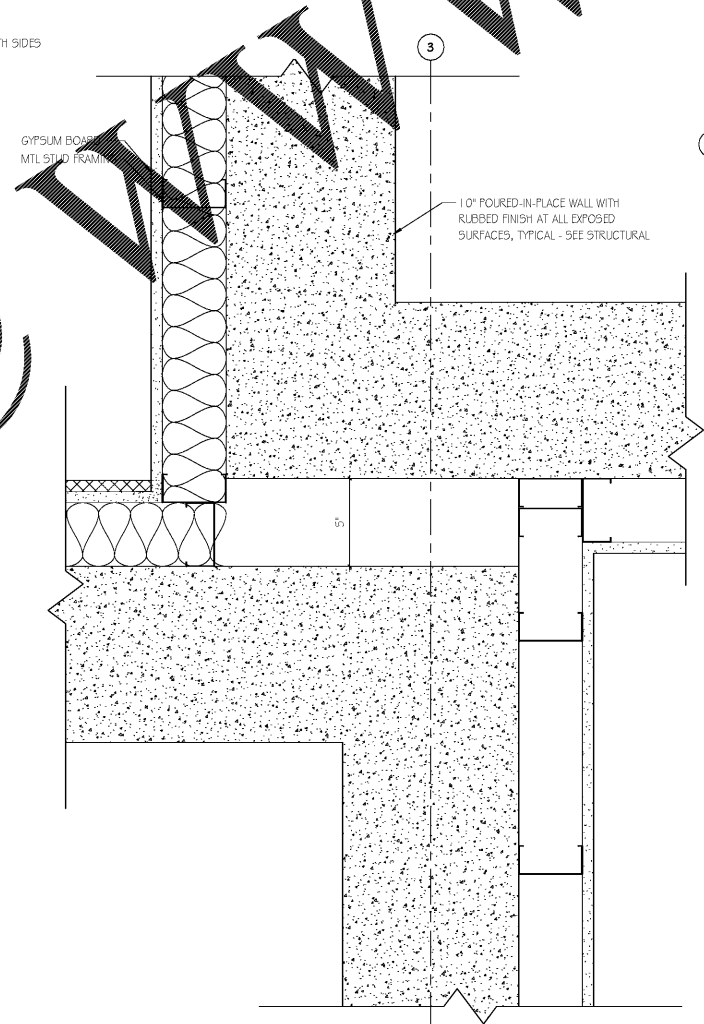
E1 ALTERNATE ENTRY PLAZA COLUMN
SCALE: 3" = 1'-0"



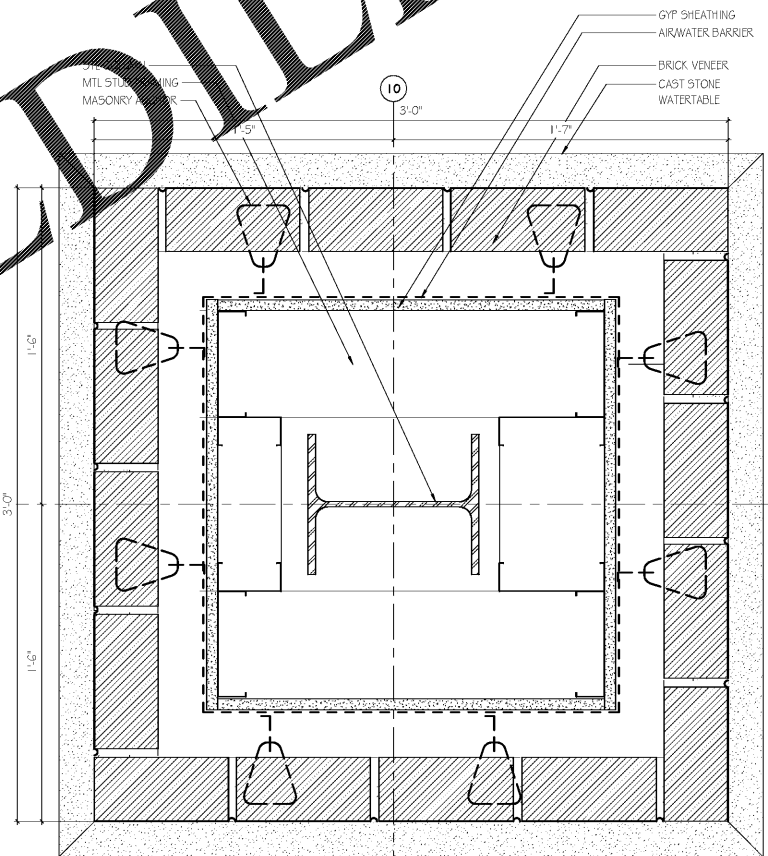
E4 INT CORNER @ SKILLS LAB
SCALE: 3" = 1'-0"



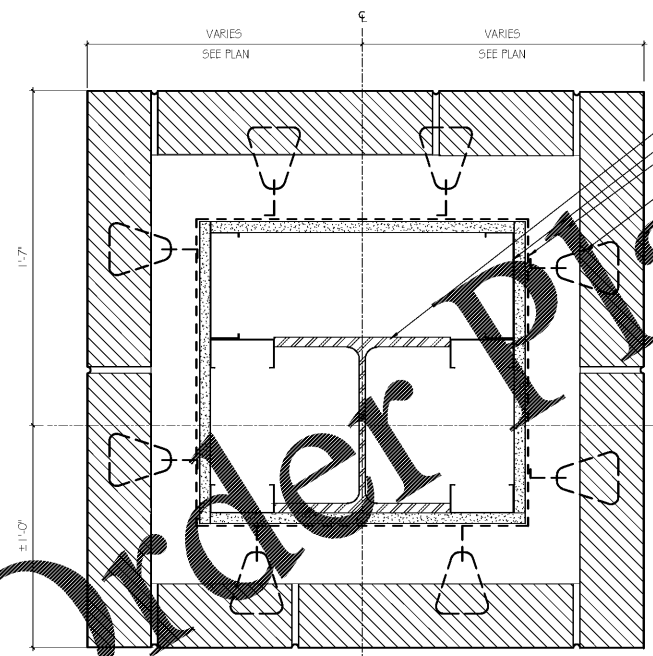
G6 LOBBY - CORRIDOR DOOR
SCALE: 3" = 1'-0"



A6 ELEVATOR CORNER DETAIL
SCALE: 3" = 1'-0"



C9 LOADING DOCK COLUMN
SCALE: 3" = 1'-0"



A1 COLUMN @ CW OVERHANG
SCALE: 3" = 1'-0"

ISSUE DATE	ISSUE FOR BID
	2019.05.25

SIMULATION LABORATORY
BUILDING - USA JOB #16-07
MOBILE, ALABAMA
ABC #2017372
GMC # AMOB160019



PLAN DETAILS
A1.21
sheet of

GMC
2701 1st Avenue S
Birmingham, AL 35233
T 205.879.4462
GMCNETWORK.COM

5/25/2019 4:10:51 PM