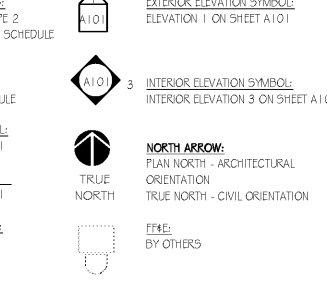
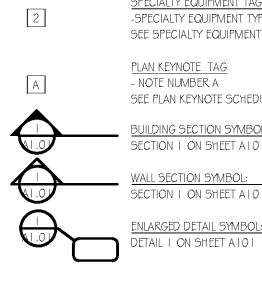
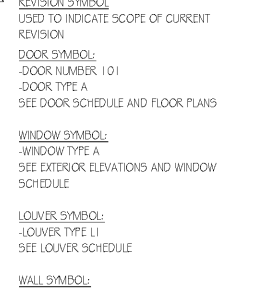
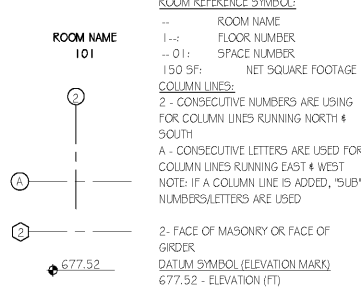


ANNOTATION

SYMBOLS



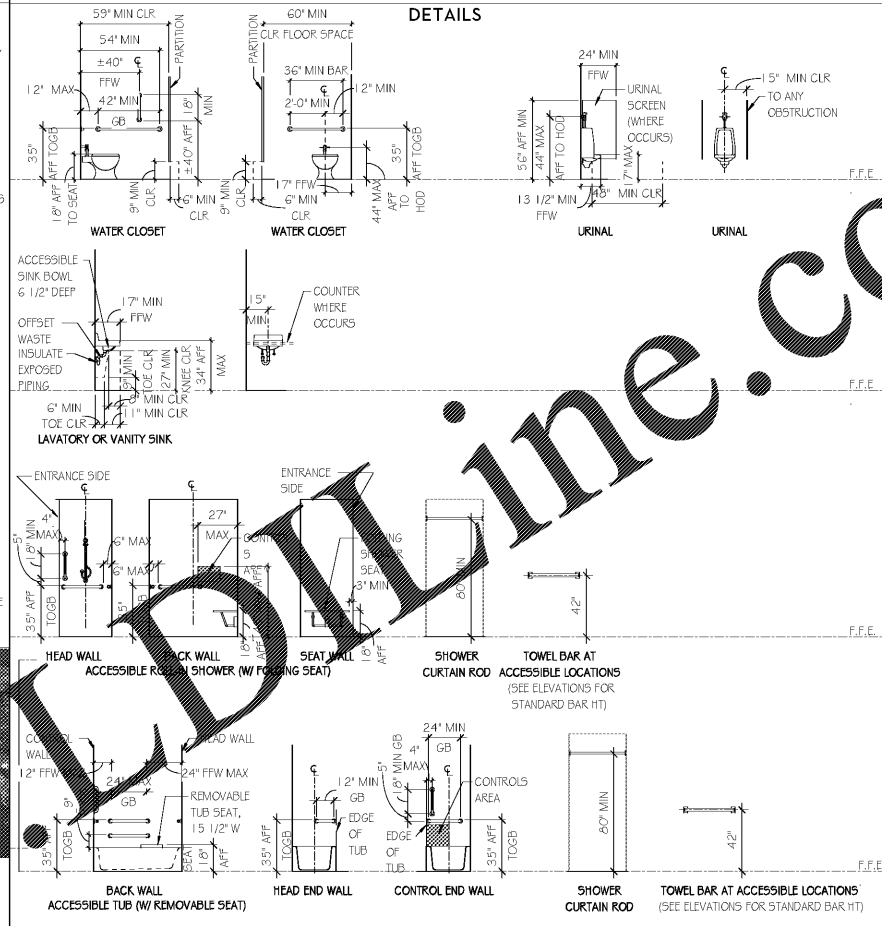
ABBREVIATIONS AND ACRONYMS

ACC	accessible	CT	ceramic tile	FBO	furnished by others	ID	inside diameter	PJ	precast joint	TELE	telephone
ACT	acoustical ceiling tile	CW	curtain wall	FD	floor drain	IE	invert elevation	PL	property line, plate	TERM	termination
ADD	addendum	CY	cubic yard	FE	fire extinguisher and cabinet	IJ	isolation joint	FLM	flexible laminate	T&G	tenon and groove
AF	above finished floor	D	dryer	FF	finish floor elevation	IN	inches	PNT	plastic laminate	TH	thick (ness)
ALT	alternate	DBL	double	FFW	finish face of wall	JAN	janitor's closet	PREFAB	prefabricated	THK	thick (ness)
ALUM	aluminum	DEM	demolish or demolition	FFH	fire hose and cabinet	JT	joint	PREFIN	prefinished	TO	top of
APPROX	approximate	DET	detail	FIC	face to face	LAM	laminate (d)	PREMANUF	premanufactured	TCC	top of curb
ARCH	architect (ural)	DH	double hung	FL	floor	LF	linear foot	PSF	pounds per square foot	TOG	top of grab bar
ADJ	adjacent	DIA	diameter	FLG	flange	L	length, angle	PSI	pounds per square inch	TOF	top of footing
B&B	balled and burlapped	DIAG	diagonal	FND	foundation	LAV	laboratory	PT	portland cement treated	TOJ	top of joist
B&C	back to back	DIM	dimension	FO	face of	LH	left hand	PT	point of tangency	TOO	top of slab/top of steel
BC	base of curb	DIP	ductile iron pipe	FOB	face of brick	LL	live load	PVC	polyvinyl chloride	TOW	top of wall
BLDG	building	DL	dead load	FOC	face of concrete	LLH	long leg horizontal	PVMT	pavement	TYP	typical
BLKG	blocking	DS	downspout	FOF	face of finish	LLV	long leg vertical	PWD	plywood	TZ	terrazzo
BM	benchmark	DWG	drawing	FOM	face of masonry	LOS	long leg	QT	quarry tile	UNO	unless noted otherwise
BOT	bottom	DF	drinking fountain	FOS	face of stud	FR	frame (ed), (ing)	RA	return air	VB	vinyl base
BRG	bearing	EA	each	FRT	fire retardant treated	FT	footprint	RAD	radius	VCT	vinyl composition tile
BSMT	basement	EF	each face	FT	footprint	FTG	footing	RB	rubber base	VERT	vertical
BLR	built-up roof	EIFS	exterior insulation	GA	gauge	GA	gauge	RCP	reflected ceiling plan	VWC	vinyl wall covering
BOW	bottom of wall	EF	exterior	GT	gypsum board	LT	light	RD	roof drain	W	washer/washdrain flange
BW	between	EJ	expansion joint	GALV	galvanized	LT GA	light gauge	REBAR	reinforcement bar	WB	wood base
C	channel	ELEV	elevation/elevator	GB	grab bar	LT	light	REF	refrigerator reference	WC	water closet
C&B	catcher	ENGR	engineer	GB	galvanized hollow metal	MAX	maximum	REIN	reinforcement	WD	wood
C&C	center to center	EOP	edge of pavement	GHM	galvanized hollow metal	MECH	mechanical	REQD	required	WH	water heater
C&D	center to deck	EOS	edge of slab	GI	galvanized iron	MEZZ	mezzanine	RET	retaining	WIN	window
CD	core deck	EQ	equal	GWB	gypsum board	MIN	minimum	REV	revision (s), revised	WP	work point, waterproofing
CF	cubic foot	EW	electric water cooler	GYP	gypsum	MO	masonry opening	RH	right hand	WT	weight
CIP	cast iron	EXH	exhaust	TI	tile	NIC	not in contract	RJ	recessed joint	WW	wall to wall
CJ	cast iron pipe	EXT	exterior	HC	height	NO	number	RM	room	WWF	welded wire fabric
CLO	closet	EXN	expansion	HM	hollow metal	NOM	nominal	RO	rough opening	W	with
CLR	clear (ance)	EXP	exposed	HOD	highest operable device	NTS	not to scale	ROW	rough opening	W	without
CMP	corrugated metal pipe	EXT	exterior	HORIZ	horizontal	OH	overhead	RTU	roof top unit	W	washer/washdrain flange
CMU	concrete masonry unit	EXT	exterior	HP	high pressure power	OC	on center (s)	SC	sealed concrete	WB	wood base
		EXT	exterior	H55	hollow structural steel	OD	outside diameter	SCHED	scheduled	WC	water closet
		EXT	exterior	HT	height	OH	opposite hand	SD	storm drain	WD	wood
		EXT	exterior	HVAC	heating/ventilating/air conditioning	OP	opposite	SECT	section	WH	water heater
		EXT	exterior	HW	hardware			SF	storefront	WIN	window
		EXT	exterior					SIM	similar	WP	work point, waterproofing
		EXT	exterior					SPEC	specification (s)	WT	weight

MOUNTING HEIGHT NOTES

- TYPICAL HEIGHTS: MOUNTING HEIGHTS INDICATED HEREIN ARE TYPICAL MOUNTING HEIGHTS FOR DEVICE INDICATED. MOUNTING HEIGHTS FOR SUBMITTED PRODUCTS MAY VARY BY MANUFACTURER. THE GENERAL CONTRACTOR SHALL NOTIFY THE ARCHITECT OF ANY DISCREPANCY BETWEEN THE INDICATED MOUNTING HEIGHT AND THE MANUFACTURER'S RECOMMENDED MOUNTING HEIGHT, PRIOR TO INSTALLATION OF THE DEVICE.
- THE GENERAL CONTRACTOR SHALL REFER TO PLANS FOR LOCATIONS OF DEVICES SHOWN HEREIN.
- ADA DEVICES: ALL DEVICES AND FIXTURES NOTED AS "ADA" OR "ACCESSIBLE" SHALL BE INSTALLED IN STRICT ACCORDANCE WITH THE AMERICANS WITH DISABILITIES ACT AND APPLICABLE BUILDING CODES.
- REQUIRED DEVICES: SEE ELECTRICAL DRAWINGS AND SPECIFICATIONS FOR REQUIRED MOUNTING HEIGHT OF ELECTRICAL DEVICES AND FIXTURES. WHERE CONFLICTS EXIST BETWEEN MOUNTING HEIGHTS INDICATED HEREIN AND THE REQUIREMENTS OF THE ELECTRICAL ENGINEER, THE GENERAL CONTRACTOR SHALL NOTIFY THE ARCHITECT PRIOR TO ROUGH-IN.
- MECHANICAL/PLUMBING DEVICES: SEE MECHANICAL AND PLUMBING DRAWINGS AND SPECIFICATIONS FOR REQUIRED MOUNTING HEIGHT OF MECHANICAL AND PLUMBING DEVICES AND FIXTURES. WHERE CONFLICTS EXIST BETWEEN MOUNTING HEIGHTS INDICATED HEREIN AND THE REQUIREMENTS OF THE MECHANICAL ENGINEER, THE GENERAL CONTRACTOR SHALL NOTIFY THE ARCHITECT PRIOR TO ROUGH-IN.
- INSTALL ADA/ANSI COMPLIANT UNDER LAVATORY GUARDS ON ALL EXPOSED SINK PIPING.
- CONTRACTOR MUST MAINTAIN ON THE JOB SITE A COPY OF THE CURRENT ADAAG STANDARDS AND THE IBC CHAPTER 11 ACCESSIBILITY REQUIREMENTS.
- DIMENSIONAL DESIGNATIONS OF +/- TO HAVE +/- 1/2" TOLERANCE UNLESS OTHERWISE NOTED.
- DESIGNATION FOR FINISHED FACE OF WALL (FFW) TO BE TAKEN FROM NEAREST CONTINUOUS SURFACE IN THE PLANE OF THE WALL (I.E. FACE OF FLOOR BASE IF FACE OF BASE EXTENDS BEYOND FACE OF WALL).

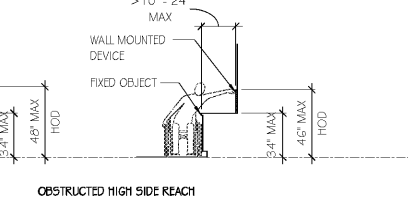
TYPICAL ACCESSIBLE PLUMBING DETAILS



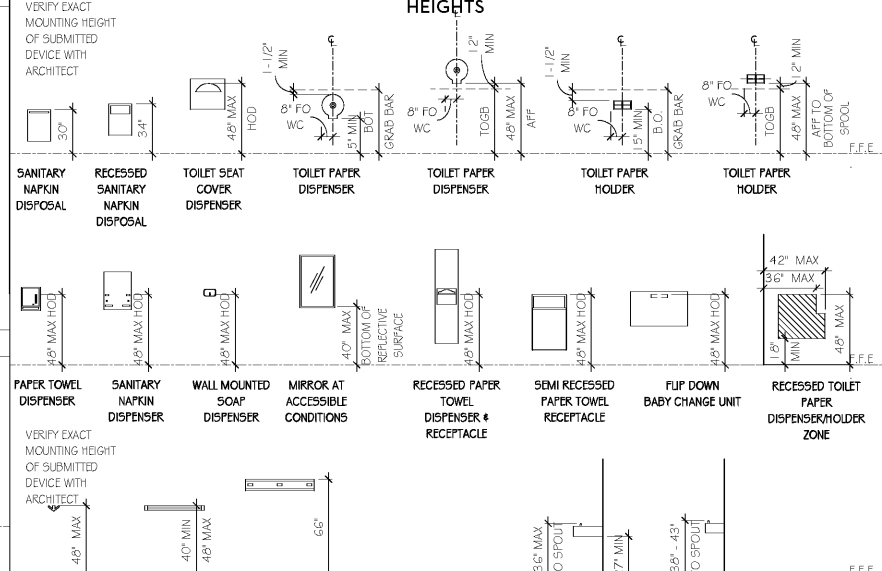
LOCATION MAP



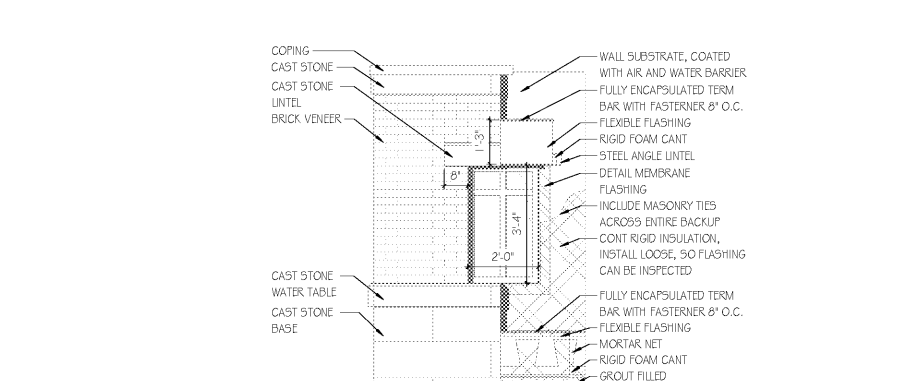
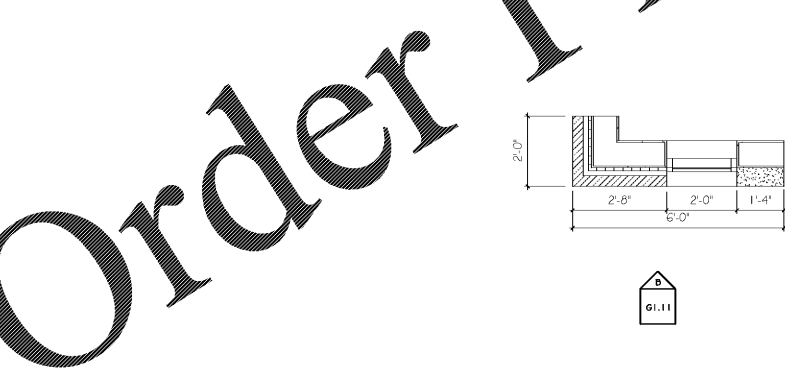
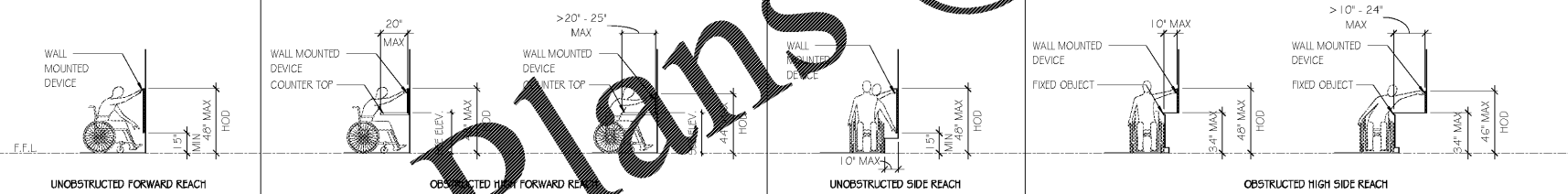
VICINITY MAP



TYPICAL ACCESSIBLE MOUNTING HEIGHTS



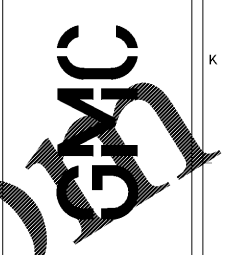
TYPICAL REACH RANGES



MOCK UP WALL

A MOCK UP WALL PLAN SCALE: 1/2" = 1'-0"

B MOCKUP WALL ELEVATION SCALE: 1/2" = 1'-0"



2701st Avenue S
Birmingham, AL 35233
T 205.879.4462
GMCNETWORK.COM

ISSUE	DATE
ISSUE FOR BID	2019.05.25

SIMULATION LABORATORY
BUILDING - USA JOB #16-07
MOBILE, ALABAMA
ABC #2017372
GMC # AMOB160019



GENERAL INFORMATION
G1.11
sheet 2 of