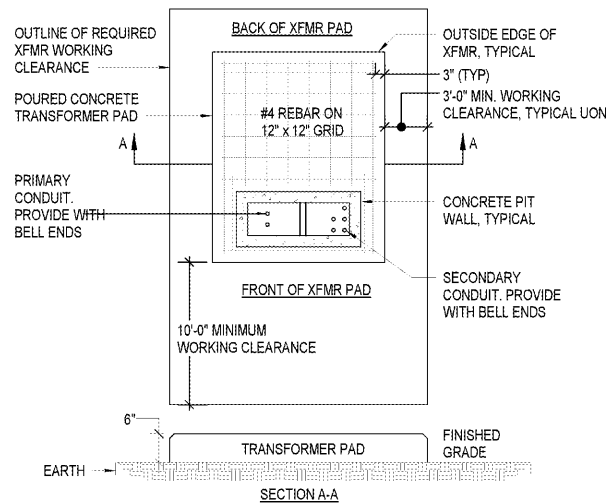


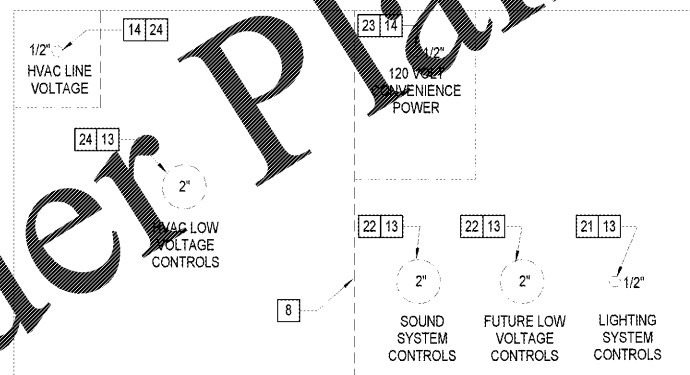
TRANSFORMER PAD INSTALLATION GENERAL NOTES

- TRANSFORMER PADS SHALL BE INSTALLED IN A LOCATION TO REMAIN READILY ACCESSIBLE FOR LINE TRUCKS.
- SOIL UNDERNEATH PADS SHALL BE FREE OF ROOTS AND OTHER ORGANIC MATERIAL AND BE THOROUGHLY TAMPED TO PREVENT WASHING. EXERCISE CARE IN BACKFILLING AND GRADING AROUND PAD.
- REINFORCE WITH #4 REBARS ON A 12" x 12" GRID TIED SECURELY 3" ABOVE BASE ON CLEAN CONCRETE OR SUPPORT. END OF REBARS TO BE 3" FROM OUTSIDE EDGE OF PAD.
- CONCRETE TO BE 5-1/2% AIR-ENTRAINED WITH A MINIMUM 28 DAY STRENGTH OF 3000 PSI. MIXTURE TO BE 1:2:4 PROPORTIONS OF CEMENT, SAND AND GRAVEL. USE NO MORE THAN 6 GALLONS OF WATER PER SACK OF CONCRETE.
- TOP SURFACE TO BE LEVEL SMOOTH AND BEVELED APPROXIMATELY 3/8".
- SERVICE CONDUIT SHALL BE LOCATED IN THE EXTREME RIGHT SIDE OF THE SECONDARY COMPARTMENT.
- FOR SPECIAL CIRCUMSTANCES CONTACT THE LOCAL UTILITY.
- ACTUAL PAD DIMENSIONS VARY BY MANUFACTURER. CONTRACTOR SHALL COORDINATE REQUIRED PAD DIMENSIONS WITH MANUFACTURER OF TRANSFORMER PROVIDED.
- PAD SHALL EXTEND 6" BEYOND FOOTPRINT OF TRANSFORMER PROVIDED.



**SERVICE TRANSFORMER PAD DETAIL
PLAN AND SECTION**

1 NO SCALE



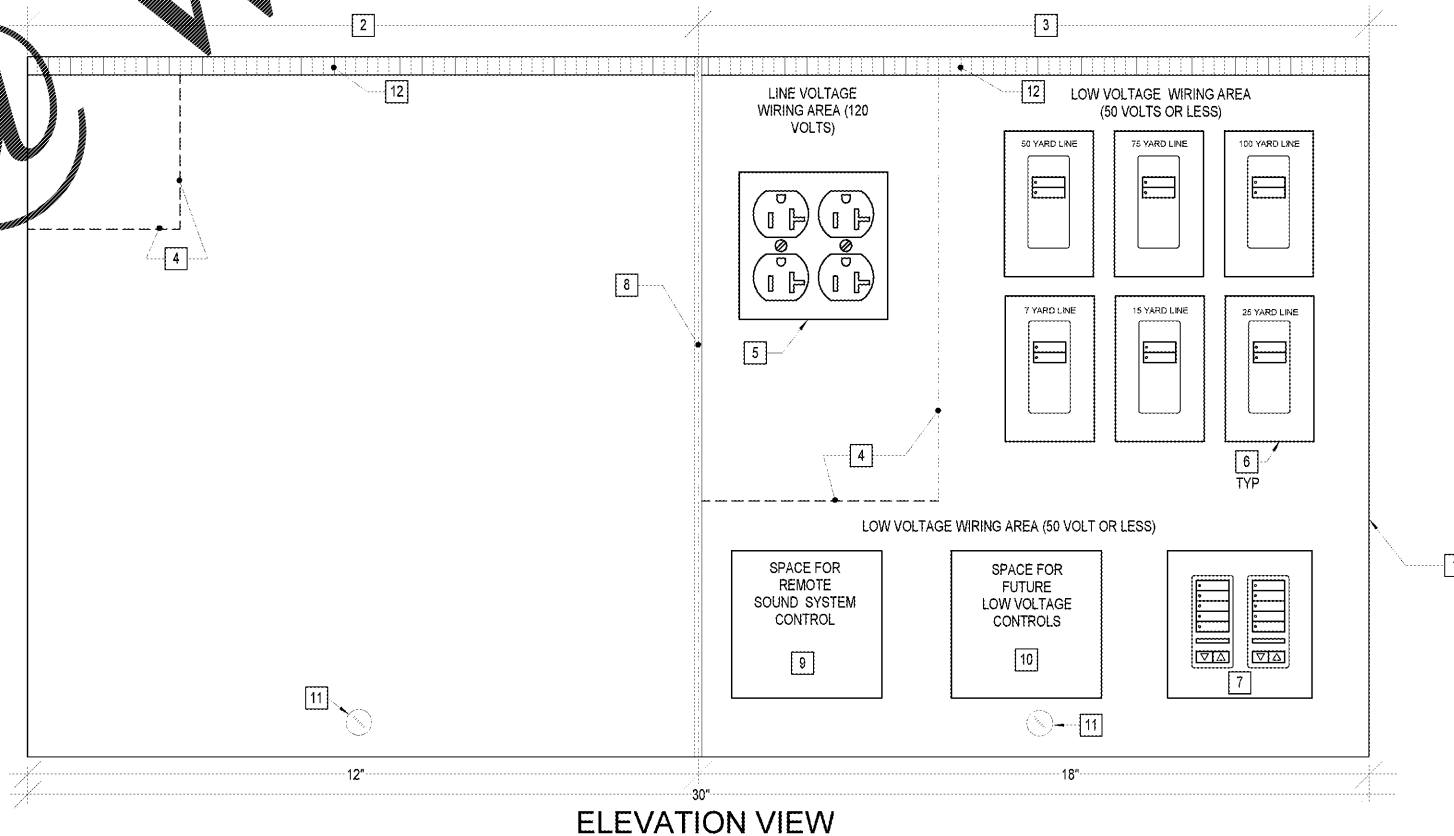
INTERIOR TOP VIEW (REDUCED VIEW)

KEY NOTES #

2 MANUAL RANGE CONTROL PANEL DETAIL
NO SCALE

MANUAL RANGE CONTROL PANEL KEYNOTES

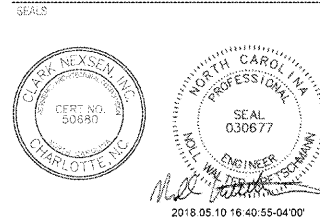
- MANUAL RANGE CONTROL PANEL IN CUSTOM NEMA 1 ENCLOSURE WITH CONTINUOUS TOP HINGE, SPLIT LID, VOLTAGE DIVIDERS AND DEVICE CUTOUTS FOR ITEMS NOTED. ENCLOSURE TO BE SURFACE MOUNTED ON DESKTOP IN CONTROL ROOM. PROVIDE ONE CONTROL PANEL PER RANGE. TYPICAL OF TWO. REFER TO SHEET EL101 FOR LOCATION. PROVIDE SHOP DRAWING FOR ENGINEER REVIEW PRIOR TO FABRICATION.
- CONTROL PANEL SECTION FOR DIVISION 23 ONLY, TO BE UPFITTED BY DIVISION 23. FIELD COORDINATE WITH DIVISION 23 CONTROLS SUPPLIER PRIOR TO FABRICATION. SEE ALSO MECHANICAL PLANS AND SPECIFICATIONS FOR ADDITIONAL INFORMATION.
- CONTROL PANEL SECTION FOR DIVISIONS 26 AND 27 ONLY.
- INTERIOR DIVIDERS SEPARATING LINE VOLTAGES FROM LOW VOLTAGES. EXACT LOCATION OF DIVIDERS TO BE DETERMINED BY DIVISION 23 UPFIT.
- 2-GANG OUTLET BOX WITH QUAD CONVENIENCE RECEPTACLE. SEE SHEET EP101 FOR RESPECTIVE BRANCH CIRCUITS.
- 1-GANG 2-BUTTON MANUAL CONTROL OF RANGE LED LIGHTBARS, TYPE 'L14'. PROVIDE (1) WALLSTATION FOR EACH YARD LINE NOTED. PROVIDE BUTTONS WITH LED ILLUMINATED CUSTOM ENGRAVING. FIELD COORDINATE ENGRAVING SPECIFICS WITH OWNER AND SUBMIT SPECIFICS WITH SHOP DRAWING FOR ENGINEER REVIEW. SEE ALSO DALI WIRING DIAGRAM ON SHEET EP501 FOR ADDITIONAL INFORMATION AND PROGRAMMING REQUIREMENTS.
- 2-GANG, 10-BUTTON MANUAL CONTROL OF RANGE AND TARGET LUMINAIRES. PROVIDE BUTTONS WITH LED ILLUMINATED CUSTOM ENGRAVING. FIELD COORDINATE ENGRAVING SPECIFICS WITH OWNER AND SUBMIT SPECIFICS WITH SHOP DRAWING FOR ENGINEER REVIEW. SEE ALSO DALI WIRING DIAGRAM ON SHEET EP501 FOR ADDITIONAL INFORMATION AND PROGRAMMING REQUIREMENTS.
- INTERIOR METAL DIVIDER SEPARATING DIVISION 23 WORK FROM DIVISIONS 26 AND 27 WORK.
- TWO-GANG BOX FOR REMOTE SOUND SYSTEM CONTROLS. SOUND SYSTEM CONTROL UPFIT AND SOUND SYSTEM WIRING BY SOUND SYSTEM SUPPLIER. FIELD COORDINATE SPECIFICS WITH SOUND SYSTEM SUPPLIER AND OWNER PRIOR TO FABRICATION AND SHOP DRAWING REVIEW.
- TWO-GANG BOX WITH BLANK PLATE FOR FUTURE LOW VOLTAGE CONTROL REQUIREMENTS.
- SEPARATE LID DESIGN, ONE FOR DIVISION 23, AND ONE FOR DIVISIONS 26 AND 27. PROVIDE EACH SECTION WITH KEYED LOCK.
- CONTINUOUS HINGE, ONE FOR EACH COVER SECTION, 180 DEGREES. TYPICAL OF 2.
- BUSHED OPENINGS, SIZED AS NOTED IN BOTTOM OPENING LIST FOR LOW VOLTAGE DEVICES NOTED. FIELD COORDINATE SPECIFICS WITH WIRETEK SUPPLIER PRIOR TO FABRICATION.
- OPENINGS IN BOTTOM OF ENCLOSURE FOR THREADED CONDUIT CONNECTORS SERVING LINE VOLTAGE DEVICES NOTED. FIELD COORDINATE EXACT LOCATIONS AND SPECIFICS WITH OTHER TRADES.
- ENGRAVED FACEPLATES SECURED TO COVER OF CONTROL PANEL. REFER TO NOTES #6 & #7 ABOVE FOR ENGRAVING REQUIREMENTS.
- 1-GANG OUTLET BOXES SECURED TO BACK OF CONTROL PANEL LID.
- 2-GANG OUTLET BOXES SECURED TO BACK OF CONTROL PANEL LID.
- 1/2" THREADED CONNECTORS FOR INCOMING LINE VOLTAGE CONDUITS AND WIRING.
- BUSHINGS FOR INCOMING LOW VOLTAGE WIRING.
- FIELD COORDINATE WITH CASEWORK SUPPLIER FOR ACCESS TO OPENINGS IN THE BOTTOM OF THE CONTROL PANEL.
- CONDUIT ROUTED UP ALONG WALL THROUGH BULKHEAD, THEN THROUGH WALL INTO RANGE STORAGE 124 ABOVE CEILING. REFER TO SHEET EP102 FOR LOCATION.
- CONDUIT ROUTED UP ALONG WALL THROUGH BULKHEAD, THEN THROUGH WALL INTO RANGE STORAGE 124 ABOVE CEILING FOR FUTURE SOUND SYSTEM.
- CONDUIT ROUTED UP ALONG WALL THROUGH BULKHEAD, THEN THROUGH WALL INTO RANGE STORAGE 124 ABOVE CEILING. REFER TO SHEET EP101 FOR EXACT LOCATION.
- CONDUIT FOR DIVISION 23 ROUTED UP ALONG WALL THROUGH BULKHEAD, THEN THROUGH WALL INTO RANGE STORAGE 124 ABOVE CEILING. FIELD COORDINATE EXACT SIZES AND TERMINATION POINTS WITH DIVISION 23 SYSTEM INSTALLER.



ELEVATION VIEW

WILMINGTON, NC
**HAYNES / LACEWELL
POLICE AND FIRE
TRAINING FACILITY**
310 WEST STREET, WILMINGTON, NC 28405

DESIGNER
CLARK NEXSEN
213 South Jefferson, Suite 1011
Roanoke, Virginia 24011
540-982-9800
www.clarknexsen.com
Clark Nexsen License Number: C-10228



SUBMITTAL
4 MAY 2018
CONSTRUCTION DOCUMENTS

REVISIONS

NO.	DESCRIPTION

SHEET
ELECTRICAL DETAILS

EP500

DESIGNER: Designer
DRAWN: Author
REVIEW: Checker
CN 5938