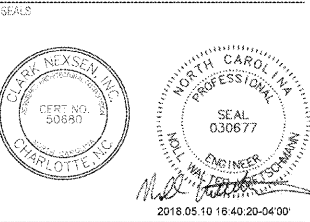


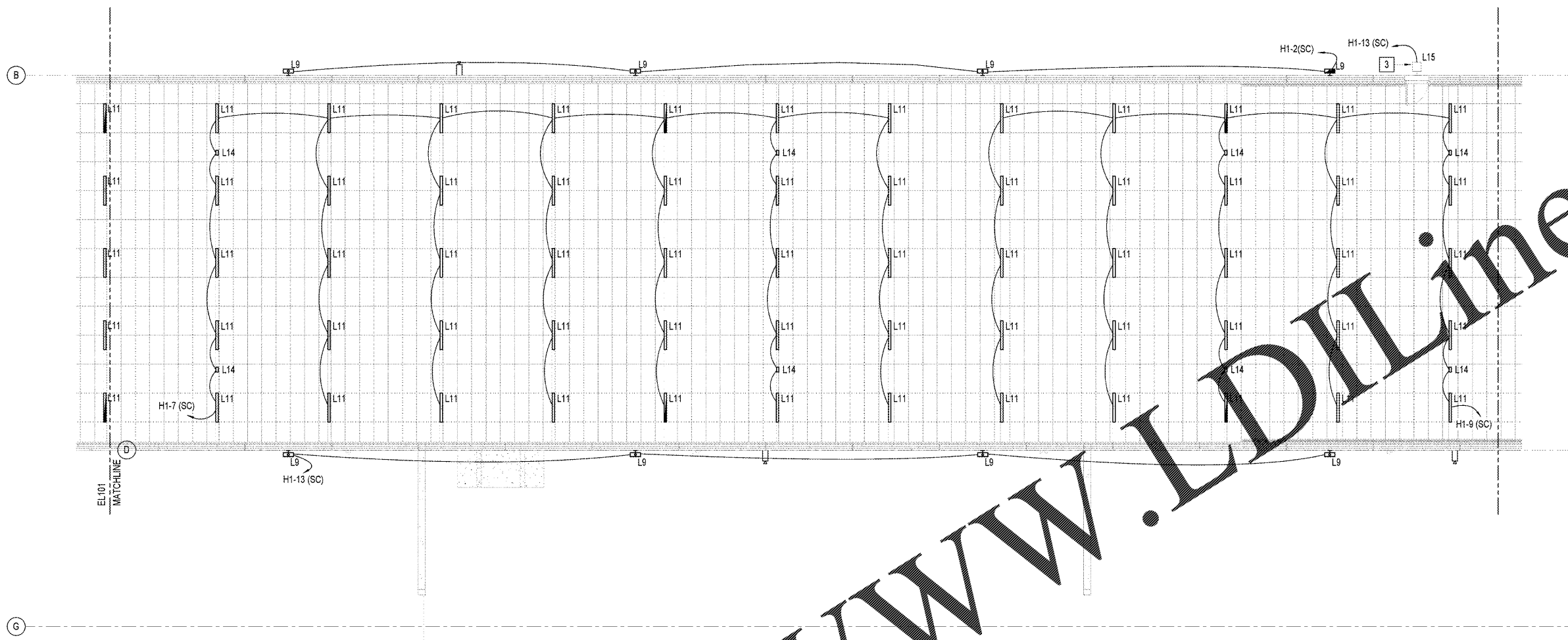
DESIGNER
CLARK NEXSEN
 213 South Jefferson, Suite 1011
 Roanoke, Virginia 24011
 546-982-9800
 www.clarknexsen.com
 Clark Nexsen License Number: C-1028



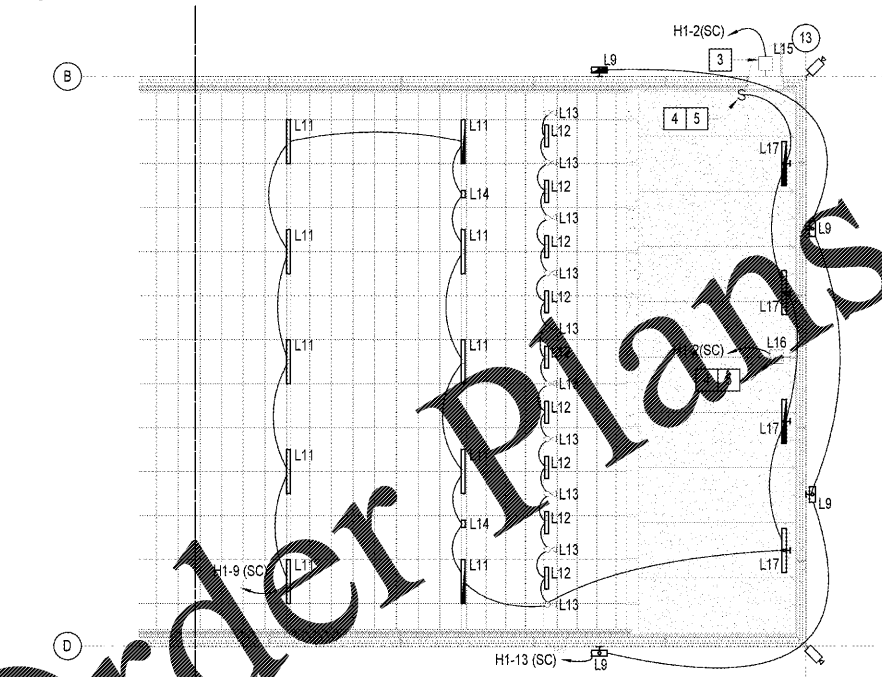
SUBMITTAL
 4 MAY 2018
CONSTRUCTION DOCUMENTS

REVISIONS

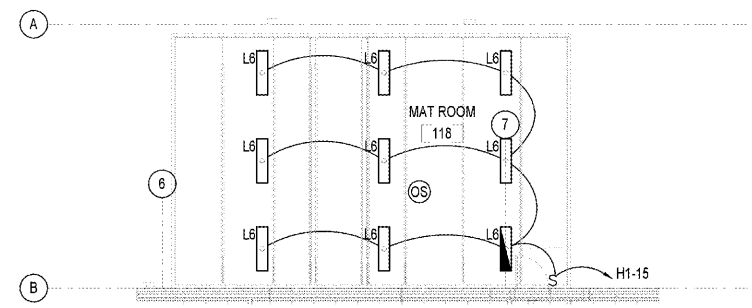
NO.	DATE	DESCRIPTION



⊕ LIGHTING PLAN - AREA B
 NO SCALE



⊕ LIGHTING PLAN - MAT ROOM
 ADDITIVE BID ITEM #1
 1/8" = 1'-0"



- # CONSTRUCTION NOTES**
- PHOTOCELL RESPONSIBLE FOR CONTROLLING EXTERIOR SIGN LIGHTING, FLAGPOLE LIGHT AND TYPE L7 LUMINAIRES LOCATED UNDER PORCH.
 - TYPE L7 LUMINAIRES CONTROLLED VIA PHOTOCELL. SEE KEYNOTE 1 FOR PHOTOCELL LOCATION.
 - ROUTE CIRCUIT VIA LIGHTING CONTROL RELAY TO MECHANICAL DDC CONTROL PANEL TO ILLUMINATE 'L15' EXTERIOR RED ROTATING WARNING LIGHTS AND 'RANGE IN USE' SIGNAGE (TYPE 'L18'). REFER TO WIRING DIAGRAM 1/EP501 FOR ADDITIONAL INFORMATION.
 - ROUTE LIGHT SWITCH CIRCUIT VIA THE LIGHTING CONTROL RELAY. WHEN LIGHT SWITCH IN TRAP MAINTENANCE AREA IS TURNED ON THE DDC PANEL WILL RECEIVE A SIGNAL VIA THE CONTROL RELAY TO ILLUMINATE 'L16' WARNING LUMINAIRES, ALERTING THE RANGE INSTRUCTOR THAT 'MAINTENANCE IS IN PROGRESS'. REFER TO DETAIL 1/EP501 FOR ADDITIONAL INFORMATION.
 - WHEN LIGHT SWITCH IN TRAP MAINTENANCE AREA IS TURNED OFF, THE DDC PANEL WILL RECEIVE A SIGNAL INPUT VIA THE LIGHTING CONTROL RELAY AND TURN THE 'L16' WARNING LUMINAIRES OFF. REFER TO DETAIL 1/EP501 FOR ADDITIONAL INFORMATION.
 - CONDUIT FOR RANGE CONTROL PANEL TIGHT TO WALL, UP THROUGH BULKHEAD, THEN THROUGH WALL INTO RANGE STORAGE 124 ABOVE CEILING. FIELD COORDINATE EXACT SIZES AND TERMINATION POINTS. SEE ALSO RANGE CONTROL PANEL DETAIL ON SHEET EP500.
 - PROVIDE CEILING MOUNTED 'RANGE IN USE' SIGN (TYPE 'L18'). COLE LIGHTING #S351C.
 - EXTERIOR SIGN LIGHTING CONTROLLED VIA PHOTOCELL. COORDINATE QUANTITY OF SIGN CONNECTIONS WITH SIGNAGE SUPPLIER. SEE KEYNOTE 1 FOR PHOTOCELL LOCATION.

EL102

DESIGNER: Designer
 DRAWN: Author
 REVIEW: Checker
CN 5938