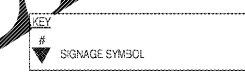


PANEL SIGNAGE KEY NOTES

- 1-1/2" CAPITAL LETTERS RAISED 3/32" WITH BRAILLE.
- 3/4" CAPITAL LETTERS RAISED 3/32" WITH BRAILLE.
- EVACUATION PLAN PRINTED ON PAPER INSERT.
- 3/4" CAPITAL LETTERS ON REMOVABLE PRINTED PAPER INSERT; LEFT ALIGNED.
- 1" CAPITAL LETTERS RAISED 3/32" WITH BRAILLE; CENTERED.
- 3/4" CAPITAL LETTERS RAISED 3/32" WITH BRAILLE; LEFT ALIGNED.

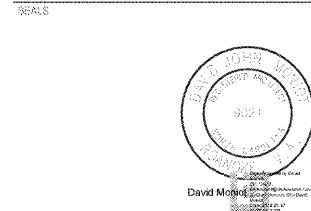
GENERAL PANEL SIGNAGE NOTES

- CONFIRM SIGNAGE TEXT, LOCATIONS, AND QUANTITIES WITH USE PRIOR TO FABRICATION.
- SIGNAGE SHALL COMPLY WITH CURRENT APPLICABLE PROVISIONS OF THE ADA ACCESSIBILITY GUIDELINES.
- SIGNAGE CONTRACTOR SHALL PROVIDE ANCHORS FOR ALL SIGNS. ALL SIGNS SHALL BE PROVIDED WITH APPROPRIATE MOUNTING HARDWARE. FASTEN SIGNS WITH MECHANICAL FASTENERS AS RECOMMENDED BY MANUFACTURER. IN AREAS WHERE FASTENERS TO DOORS OR RATED PARTITIONS, PROVIDE PRESSURE SENSITIVE TAPE FOR MOUNTING. IN AREAS WHERE FASTENERS TO GLASS, PROVIDE PRESSURE SENSITIVE TAPE FOR MOUNTING AND BACKING PLATES, SO THAT MOUNTING METHOD IS CONCEALED.



WILMINGTON, NC
**HAYNES / LACEWELL
 POLICE AND FIRE
 TRAINING FACILITY**
 310 WEST STREET, WILMINGTON, NC 28405

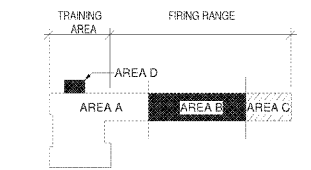
DESIGNER
CLARK NEXSEN
 213 South Jefferson, Suite 1011
 Roanoke, Virginia 24011
 540-962-0800
 www.clarknexsen.com
 Clark Nexsen License Number: C-1028



SUBMITTAL
 4 MAY 2018
 CONSTRUCTION DOCUMENTS

REVISIONS

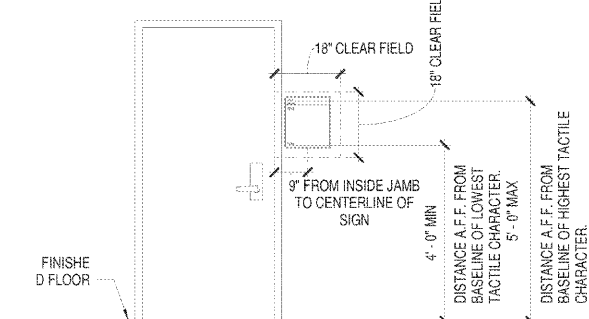
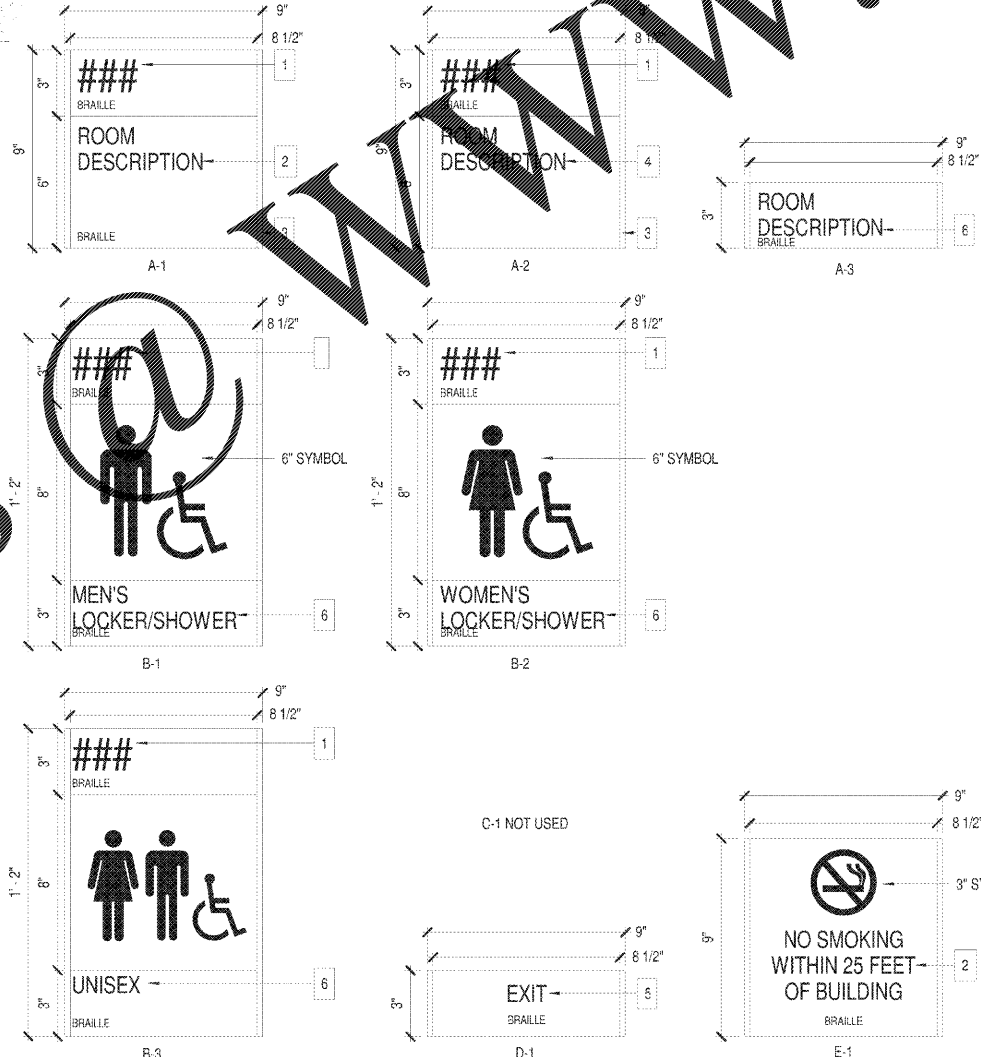
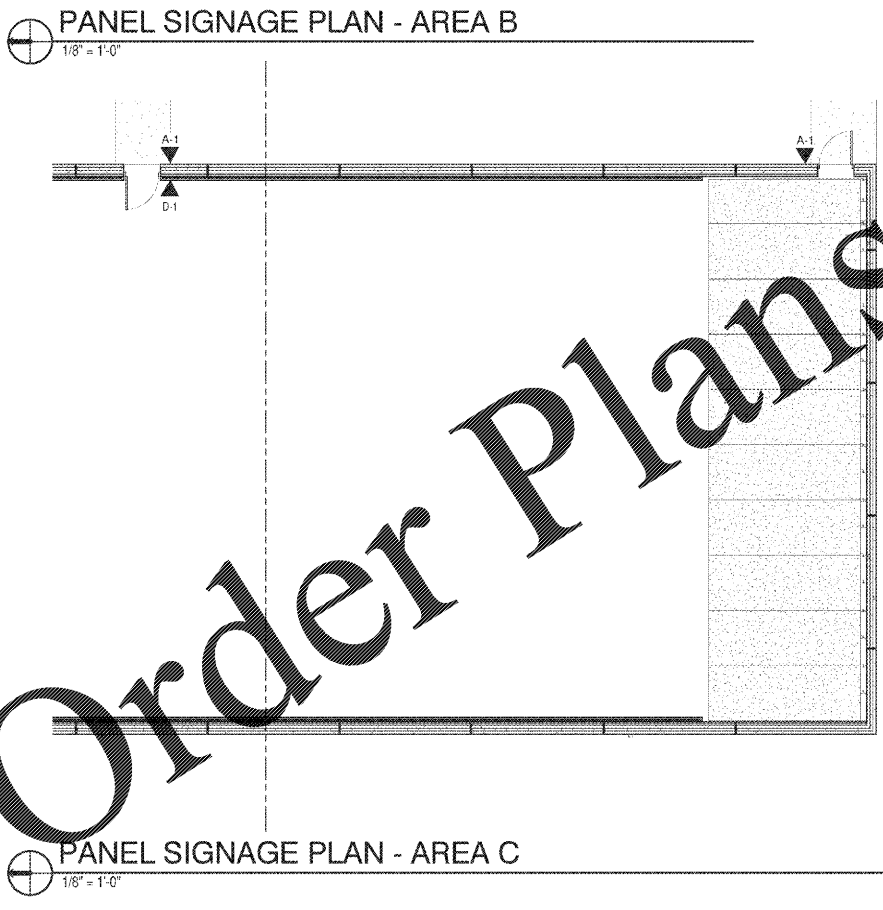
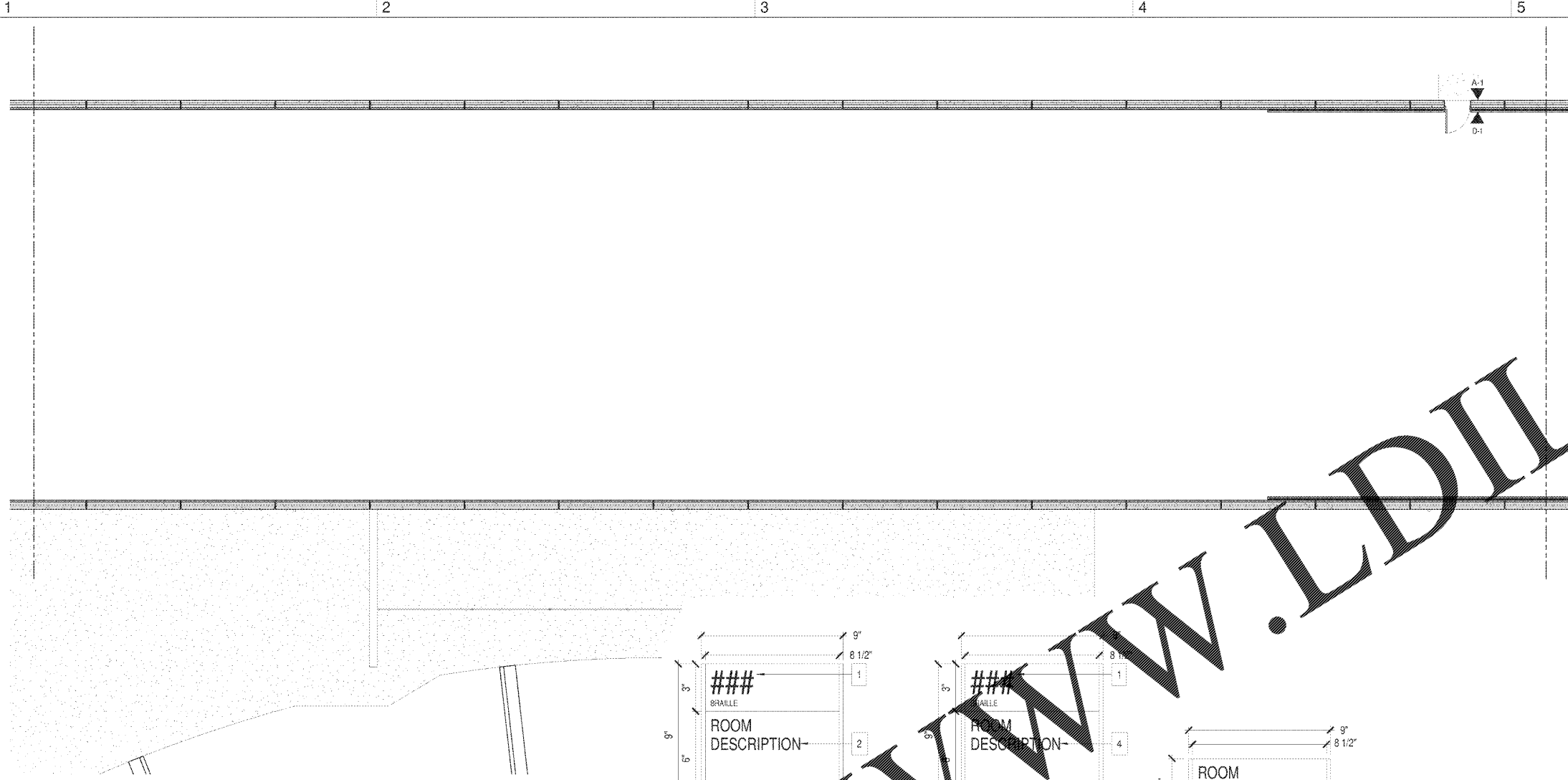
| NO. | DATE | DESCRIPTION |
|-----|------|-------------|
| | | |
| | | |
| | | |
| | | |
| | | |
| | | |
| | | |
| | | |
| | | |



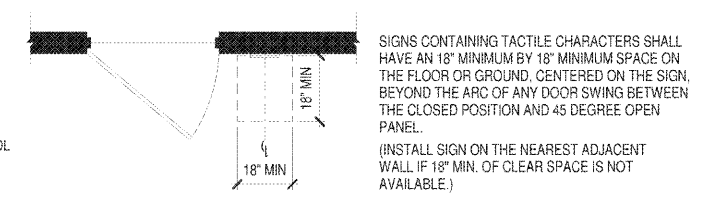
SHEET
PANEL SIGNAGE PLAN

IF102

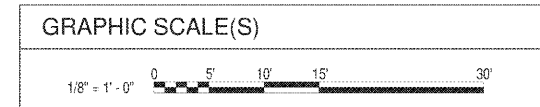
DESIGN: DJM
 DRAWN: ZLT
 REVIEW: JCS
 CN 5938



SIGNAGE MOUNTING
 1/2" = 1'-0"



TYPICAL SIGNAGE LOCATION
 1/2" = 1'-0"



S:\PROJECTS\2018\2018-05-17\Haynes Fire City Training Facility AT7.dwg
 5/17/2018 10:26:29 AM
 D:\Haynes\Projects\2018\Haynes Fire City Training Facility AT7.dwg

Order Plans