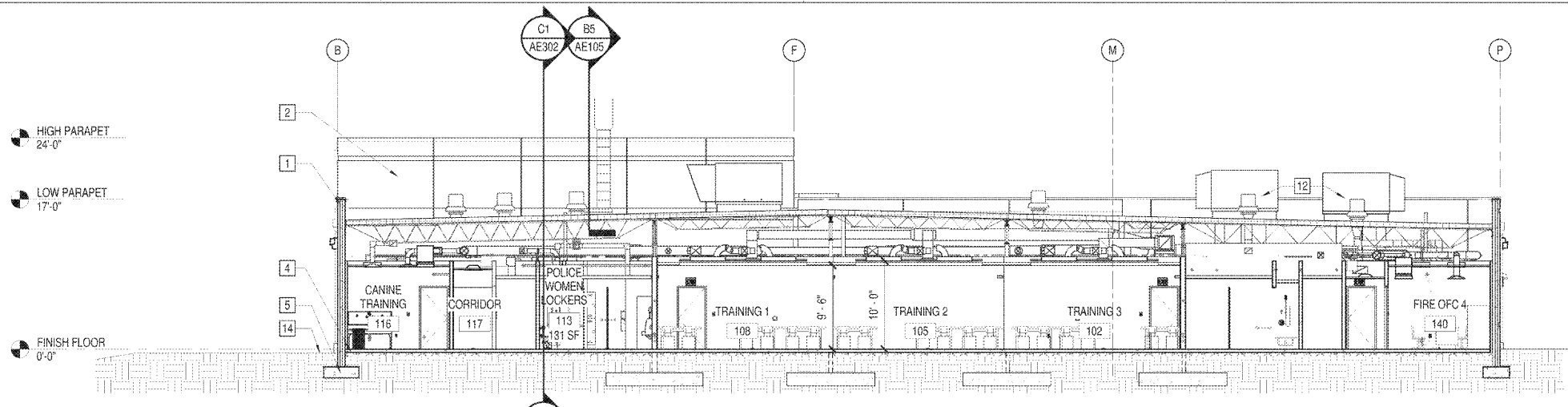
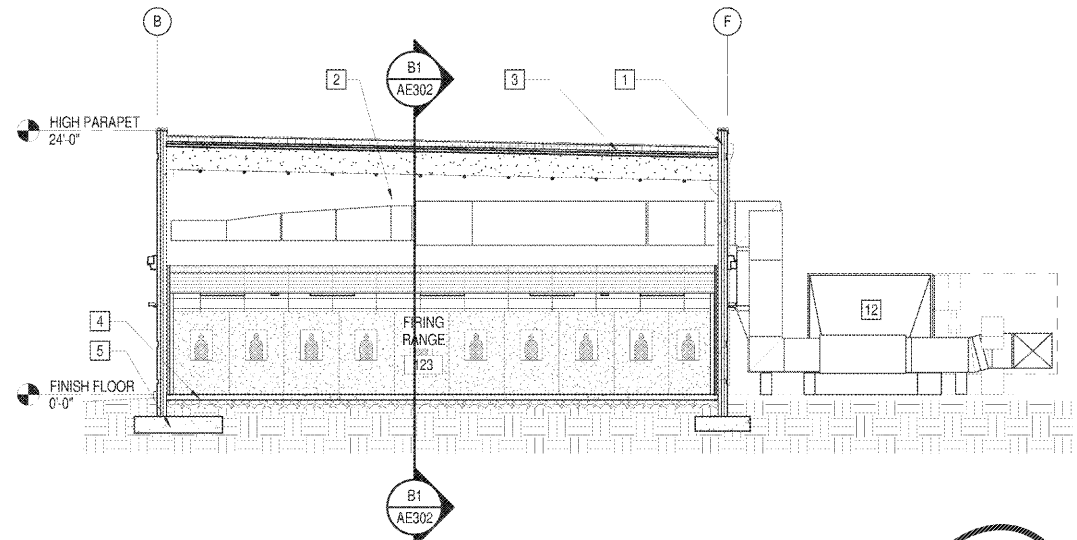


BUILDING SECTION NOTES

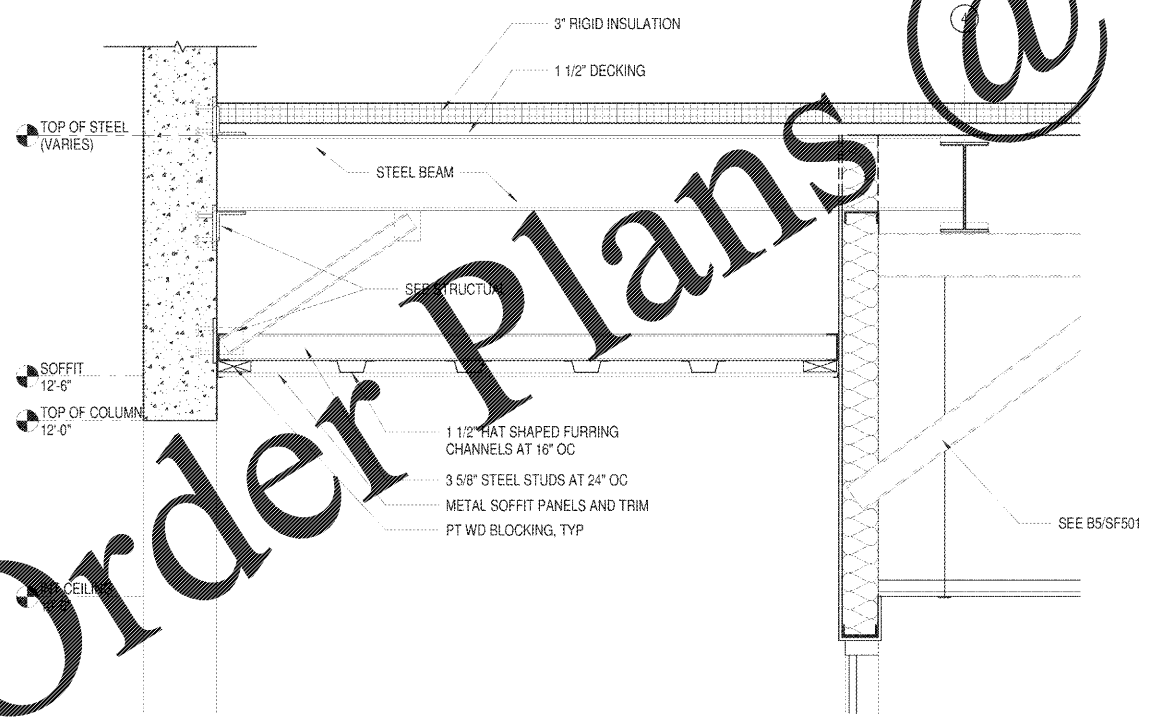
- 1 INSULATED PRECAST CONCRETE WALL PANEL (TYP)
- 2 PRECAST CONCRETE WALL PANEL
- 3 PRECAST DOUBLE TEE ROOF WITH TOPPING SLAB AND EPDM ROOFING (AIR BARRIER)
- 4 CONCRETE SLAB ON GRADE WITH VAPOR RETARDER (AIR BARRIER)
- 5 CONCRETE FOUNDATION
- 6 INTERMEDIATE CEILING FRAMING
- 7 BAFFLE HANGER
- 8 ARS BAFFLE CEILING WITH SOUND ABSORPTION PANELS
- 9 ACOUSTICAL PANEL CEILINGS
- 10 SIDEWALL BULLET TRAP, EXTEND INTO CEILING BAFFLE RECESSES
- 11 4"x18" PAINTED FIRING LINE MARKER WITH 8" TALL NUMBER BOTH SIDES OF THE RANGE
- 12 MECHANICAL EQUIPMENT
- 13 ROOF HATCH
- 14 FINISHED GRADE



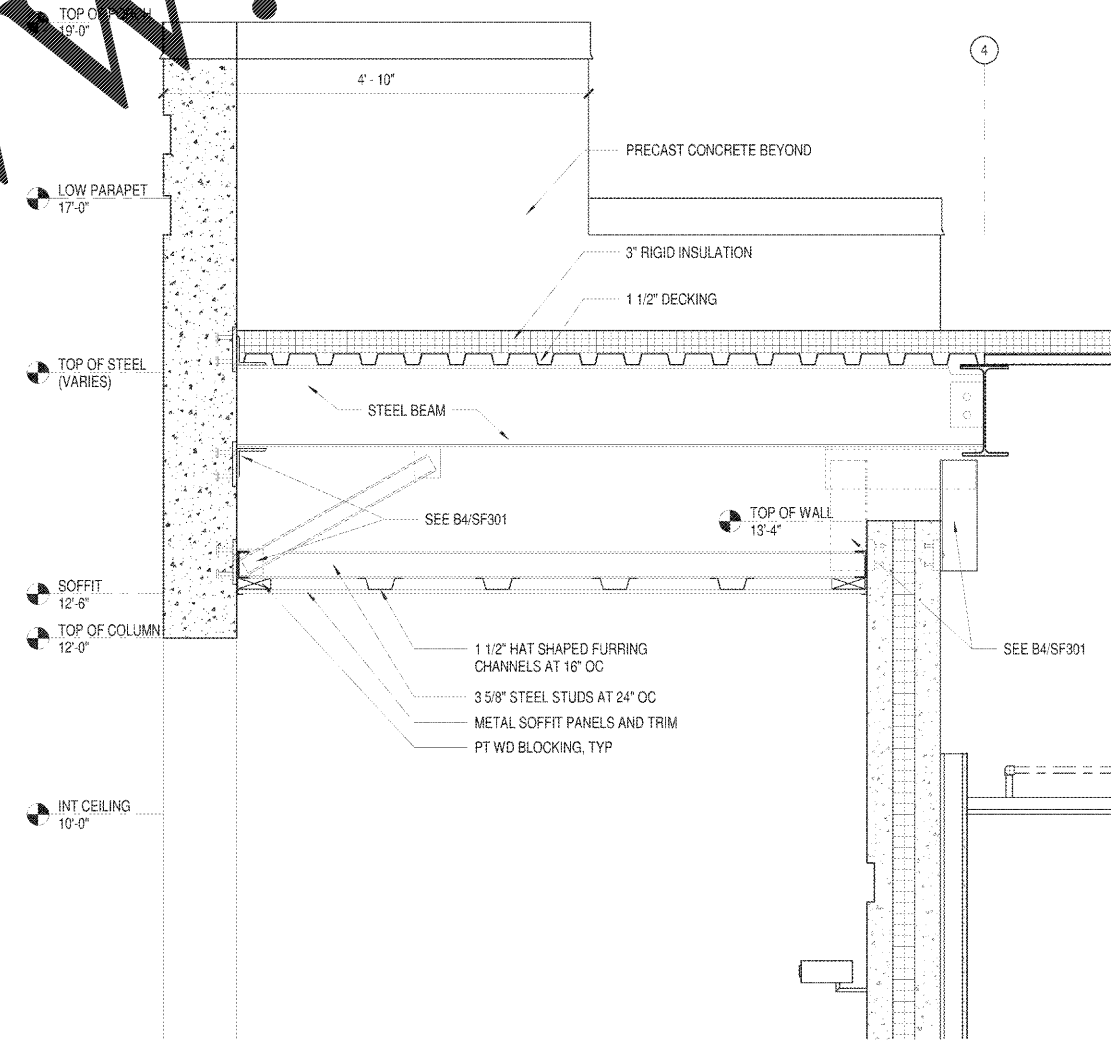
(C1) ADMIN BUILDING SECTION
 1/8" = 1'-0"



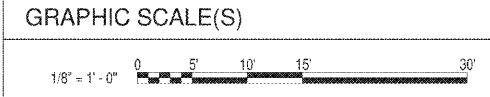
(B1) RANGE SECTION
 1/8" = 1'-0"



(A1) PORCH SECTION AT STOREFRONT
 1" = 1'-0"



(A3) PORCH SECTION
 1" = 1'-0"



WWW.LDILine.com

Order Plans @

SEALS



SUBMITTAL
 4 MAY 2018
 CONSTRUCTION DOCUMENTS

REVISIONS

SHEET
 BUILDING SECTIONS

AE301

DESIGN: DJM
 DRAWN: ZLT
 REVIEW: JCS
 CN 5938