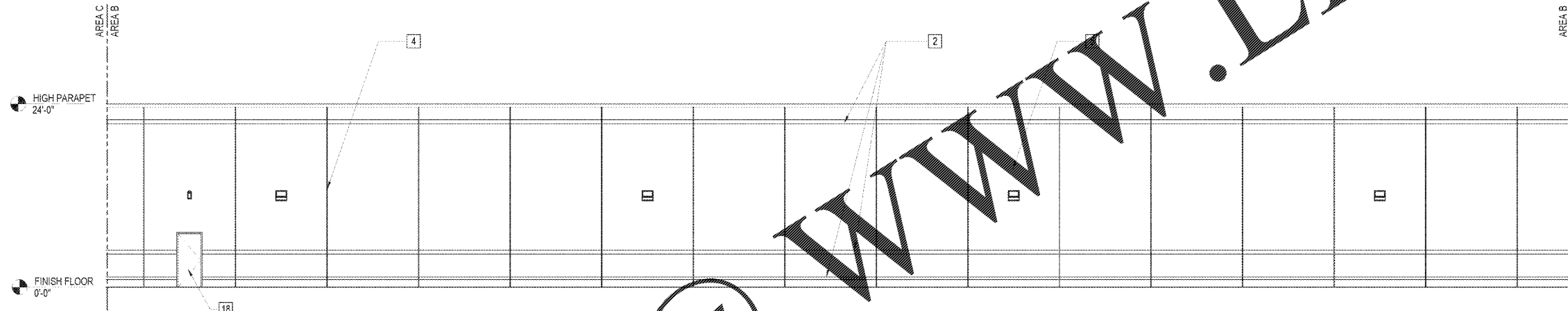
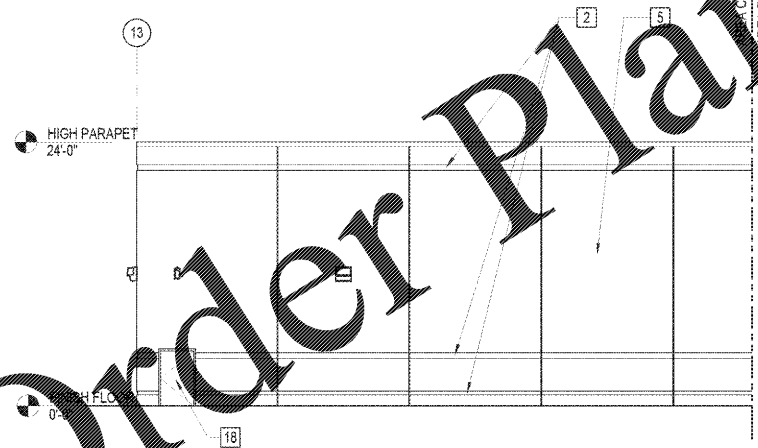


**(C1) EAST ELEVATION AREA A**  
 1/8" = 1'-0"



**(B1) EAST ELEVATION AREA B**  
 1/8" = 1'-0"



**(A1) EAST ELEVATION AREA C**  
 1/8" = 1'-0"

**ELEVATION GENERAL NOTES**

1. PROVIDE BITUMINOUS DAMPROOFING BELOW GRADE ON ALL EXTERIOR PRECAST CONCRETE WALL PANELS

**ELEVATION NOTES**

- 1 PRECAST CONCRETE BUTTRESS
- 2 REVEALS CAST IN PANEL SURFACE (TYP)
- 3 PRECAST CONCRETE COLUMN
- 4 SEALANT JOINTS BETWEEN PANELS (TYP)
- 5 INSULATED PRECAST CONCRETE WALL PANEL (TYP)
- 6 FIXED ALUMINUM STOREFRONT WINDOW WITH INSULATED GLAZING (TYP)
- 7 ALUMINUM STOREFRONT ENTRANCE
- 8 TOP OF LOGGIA BEHIND
- 9 COILING STEEL OVERHEAD DOOR, PAINTED
- 10 INSULATED HOLLOW METAL DOOR, PAINTED
- 11 ALUMINUM STOREFRONT
- 12 INSULATED GLAZING
- 13 PRECAST CONCRETE
- 14 METAL COLLECTOR BOX AND DOWNSPOUT, PAINTED (TYP)
- 15 EMERGENCY SCUPPER
- 16 LOCATION FOR BUILDING IDENTIFICATION SIGNAGE (LUMP-SUM ALLOWANCE NO.2)
- 17 SHIPS LADDER AND DUCT CROSSOVER
- 18 COORDINATE DOOR ROUGH OPENING WITH PANEL SIZE AND ACTUAL DOOR PRODUCTS.
- 19 LOUVER
- 20 PRECAST CONCRETE BUTTRESS COPING
- 21 WATERFLOW ALARM BELL
- 22 PRECAST CONCRETE PANEL COPING
- 23 CHAIN LINK FENCE. SEE C704

**GRAPHIC SCALE(S)**



5/15/2018 4:50:53 PM  
 C:\Users\Projector\OneDrive\Projects\Haynes Fire City Training Facility\AT\_Arch\at.dwg

Order Plans @ www.LDILine.com