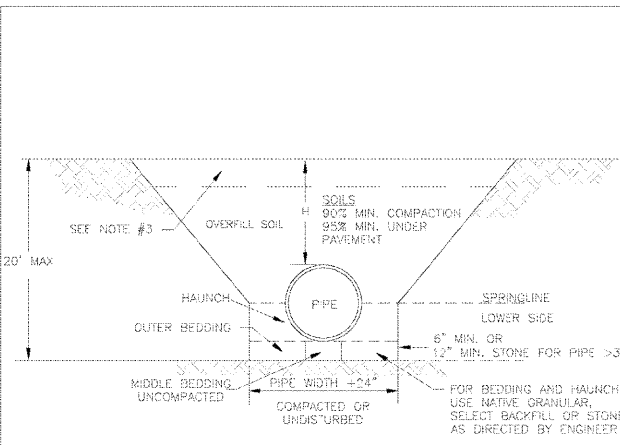


1
2
3
4
5
D
C
B
A



- NOTES:
1. CONTRACTOR SHALL ENSURE BOTTOM OF TRENCH IS SUITABLE FOR PIPE INSTALLATION AND DOES NOT REQUIRE FOUNDATION CONDITIONING STONE.
 2. CONTRACTOR TO INSTALL BEDDING AND PIPE BEFORE INSTALLING HAUNCH AND THEN OVERFILL SOILS SHALL BE INSTALLED IN 6"-8" LIFTS AND COMPACTED TO MIN. % DENSITY AS DETERMINED BY THE STANDARD PROCTOR ASTM D-696-A METHOD.
 3. WHERE IN PAVEMENT, CONTRACTOR SHALL ADHERE TO CITY STREET CUT POLICY AND SD 1-04 OR SD 1-05 FOR ROAD AND PAVEMENT REBUILD.
 4. SOIL SHALL BE COMPACTED BY A MECHANIZED TAMP (I.E. JUMPING JACK). HOWEVER, VIBRATORY ROLLERS > 18" WIDTH MAY BE USED FOR LARGER EXCAVATIONS. THE PLATE TAMP METHOD SHALL NOT BE USED.
 5. THIS DETAIL IS REPRESENTATIVE AND PIPE TRENCH DESIGN IS SUBJECT TO SPECIFIC SOIL CATEGORY (I, II, III), AND INSTALLATION TYPE (1, 2, 3, 4), AS DIRECTED BY THE ENGINEER AND SITE CONDITIONS.

STANDARD DETAIL

DATE: MAY, 2013

DRAWN: JBR

CHECKED: RDR, P.E.

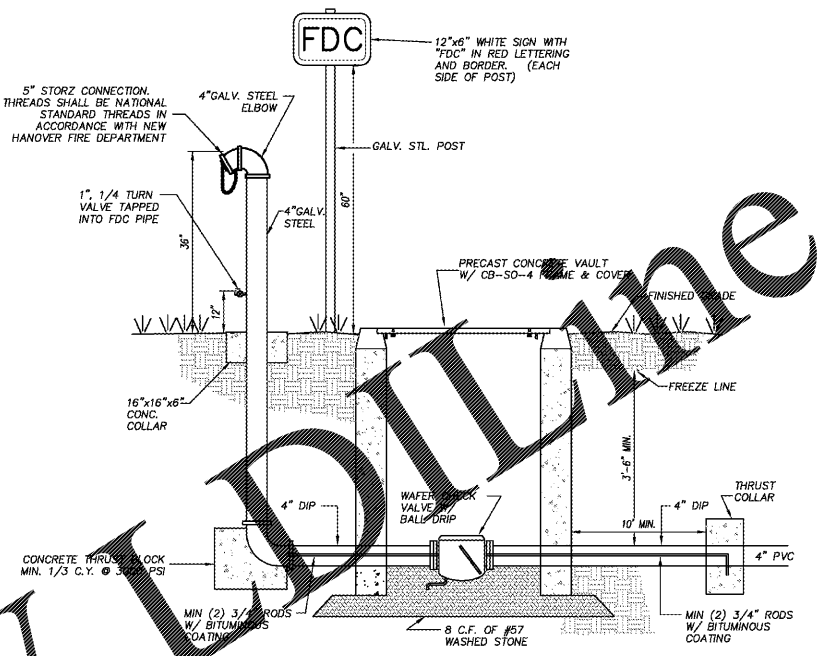
SCALE: NOT TO SCALE

PIPE TRENCH TYPICAL

CITY OF WILMINGTON
ENGINEERING OFFICE
112 OPERATIONS CENTER DRIVE
WILMINGTON, N.C. 28412
(919) 341-7607

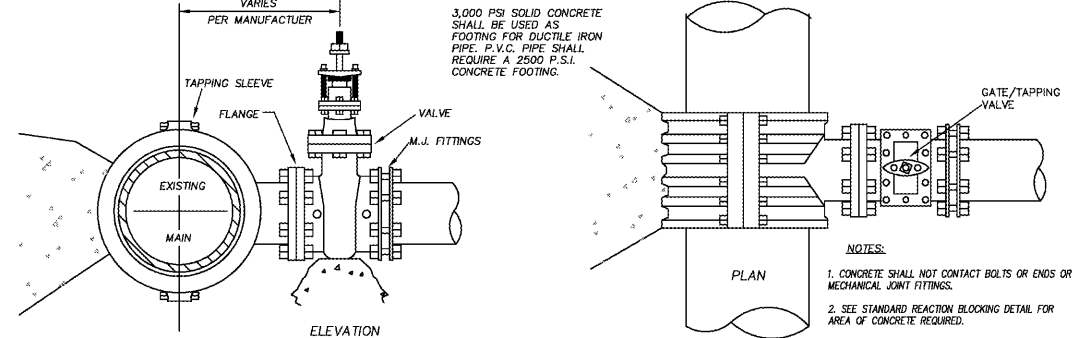
SD 1-07

CITY OF WILMINGTON STANDARD DETAILS

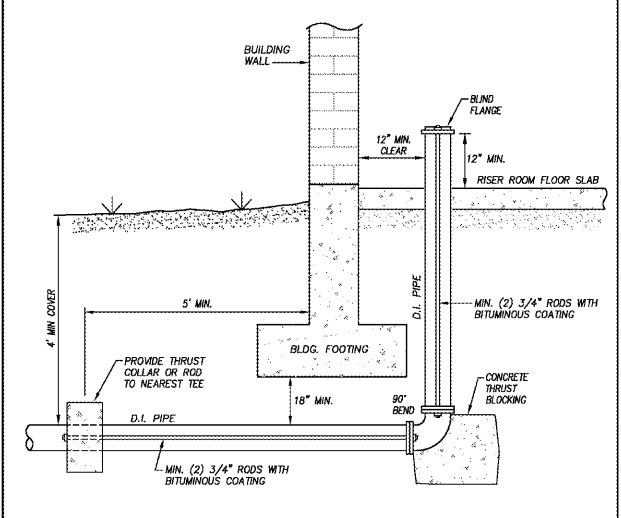


- 5" STORZ CONNECTION, THREADS SHALL BE NATIONAL STANDARD THREADS IN ACCORDANCE WITH NEW HANOVER FIRE DEPARTMENT
- 12"x6" WHITE SIGN WITH "FDC" IN RED LETTERING AND BORDER. (EACH SIDE OF POST)
- 4" GALV. STEEL ELBOW
- GALV. STL. POST
- 1" 1/4 TURN VALVE TAPPED INTO FDC PIPE
- 4" GALV. STEEL
- 16"x16"x6" CONC. COLLAR
- PRECAST CONCRETE VAULT W/ CB-SO-4 FRAME & COVER
- FINISHED GRADE
- FREEZE LINE
- 4" DIP
- WAFER VALVE BALL DRIP
- 10" MIN.
- 4" DIP
- THRUST COLLAR
- 4" PVC
- CONCRETE THRU-BLOCK MIN. 1/3 C.Y. @ 3000 PSI
- MIN (2) 3/4" RODS W/ BITUMINOUS COATING
- 8 C.F. OF #57 WASHED STONE
- MIN (2) 3/4" RODS W/ BITUMINOUS COATING

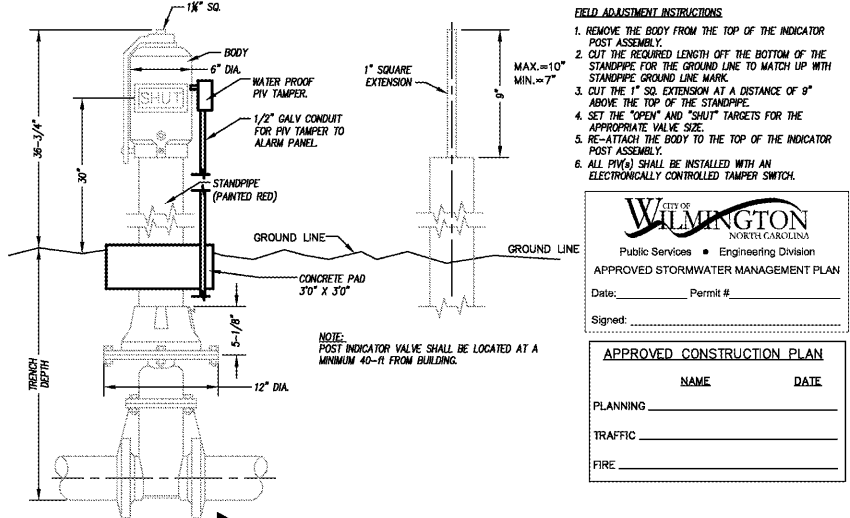
FIRE DEPARTMENT CONNECTION



4" - 24" STANDARD TAPPING SLEEVE AND VALVE ASSEMBLY



STANDARD FIRE SERVICE INSTALLATION AT BUILDING



POST INDICATOR VALVE

WILMINGTON, NC

**HAYNES / LACEWELL
POLICE AND FIRE
TRAINING FACILITY**

3100 HURST STREET WILMINGTON, NC 28405

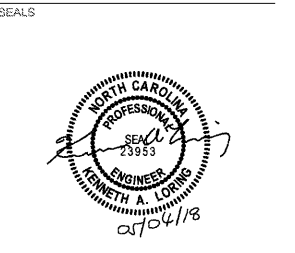
DESIGNER

CLARK NEXSEN

213 South Jefferson Street, Suite 1011
Roanoke, Virginia 24011
T: 540-982-0800 F: 540-982-1193
WWW.CLARKNEXSEN.COM
CLARK NEXSEN LICENSE NUMBER: C-1026

CONSULTANT

CLH DESIGN, P.A.
Regency Park
400 Regency Forest Drive
Suite 100
Cary, North Carolina 27518
Phone: (919) 318-8716
Fax: (919) 318-7516
LA: C-106, PE: C-1596



SUBMITTAL
4 MAY 2018

CONSTRUCTION DOCUMENTS

FIELD ADJUSTMENT INSTRUCTIONS

1. REMOVE THE BODY FROM THE TOP OF THE INDICATOR POST ASSEMBLY.
2. CUT THE REQUIRED LENGTH OFF THE BOTTOM OF THE STANDPIPE FOR THE GROUND LINE TO MATCH UP WITH STANDPIPE GROUND LINE MARK.
3. CUT THE 1" SQ. EXTENSION AT A DISTANCE OF 9" ABOVE THE TOP OF THE STANDPIPE.
4. SET THE "SHUT" AND "SHUT" TARGETS FOR THE APPROPRIATE VALVE SIZE.
5. RE-ATTACH THE BODY TO THE TOP OF THE INDICATOR POST ASSEMBLY.
6. ALL PIPES SHALL BE INSTALLED WITH AN ELECTRONICALLY CONTROLLED TAMPER SWITCH.

NOTE: POST INDICATOR VALVE SHALL BE LOCATED AT A MINIMUM 40'-0" FROM BUILDING.

CITY OF WILMINGTON
NORTH CAROLINA
Public Services • Engineering Division

APPROVED STORMWATER MANAGEMENT PLAN

Date: _____ Permit # _____

Signed: _____

APPROVED CONSTRUCTION PLAN

NAME	DATE
PLANNING	_____
TRAFFIC	_____
FIRE	_____

DESIGN: ZRP
DRAWN: YA, DL
REVIEW: ZRP, KAL

CN 5938
CLH 16-161

DETAILS
C711