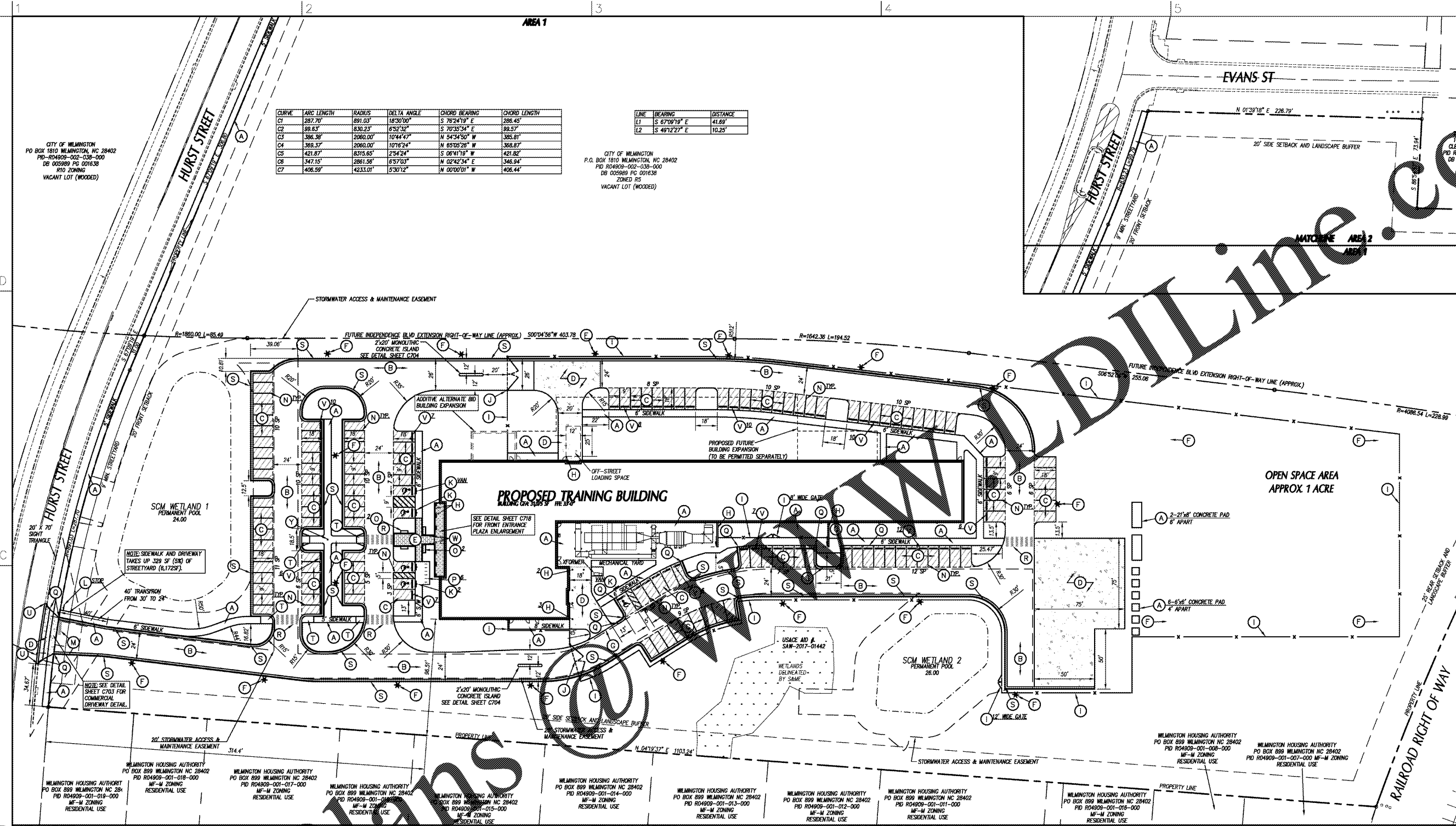


CURVE	ARC LENGTH	RADIUS	DELTA ANGLE	CHORD BEARING	CHORD LENGTH
C1	287.70'	891.03'	18°30'00"	S 76°24'19" E	286.45'
C2	89.83'	830.23'	6°32'32"	S 70°35'34" E	88.57'
C3	386.38'	2060.00'	10°44'47"	N 54°34'50" W	368.81'
C4	389.37'	2060.00'	10°76'24"	N 85°05'28" W	368.87'
C5	421.87'	8375.85'	2°54'24"	S 08°41'19" W	421.82'
C6	347.15'	2881.58'	6°57'03"	N 02°42'34" E	346.94'
C7	406.59'	4233.01'	5°30'12"	N 00°00'01" W	406.44'

LINE	BEARING	DISTANCE
L1	S 67°09'19" E	41.69'
L2	S 49°12'27" E	10.25'

CITY OF WILMINGTON
 P.O. BOX 1810 WILMINGTON, NC 28402
 PID R04909-002-038-000
 DB 005989 PC 001638
 ZONED R5
 VACANT LOT (WOODED)

CITY OF WILMINGTON
 P.O. BOX 1810 WILMINGTON, NC 28402
 PID R04909-002-038-000
 DB 005989 PC 001638
 R10 ZONING
 VACANT LOT (WOODED)



DESIGNER
CLARK NEXSEN
 213 South Jefferson Street, Suite 1011
 Roanoke, Virginia 24011
 T: 540-982-0800 F: 540-982-1193
 WWW.CLARKNEXSEN.COM
 CLARK NEXSEN LICENSE NUMBER: C-1028

CONSULTANT
CLH DESIGN, P.A.
 Regency Park
 400 Regency Forest Drive
 Suite 120
 Cary, North Carolina 27518
 Phone: (919) 318-8716
 Fax: (919) 318-7516
 LA: C-106, PE: C-1595



SUBMITTAL
 4 MAY 2018
 CONSTRUCTION DOCUMENTS

- KEY NOTES**
- (A) CONCRETE SIDEWALK, SEE DETAIL SHEET C705.
 - (B) HEAVY DUTY ASPHALT PAVEMENT, SEE DETAIL SHEET C704.
 - (C) LIGHT DUTY ASPHALT PAVEMENT, SEE DETAIL SHEET C704.
 - (D) CONCRETE PAVEMENT, SEE DETAIL SHEET C704.
 - (E) BRICK PAVERS, SEE DETAIL SHEET C704.
 - (F) LIGHT POLE BY DUKE ENERGY.
 - (G) CONCRETE PAVEMENT/SIDEWALK FLUSH WITH ASPHALT.
 - (H) SEE ARCHITECTURAL PLANS FOR WALLS, CANYONS, CORNICES, BUSHES, BOLLARDS, ETC.
 - (I) 8" TALL BLACK VINYL COATED CHAIN LINK FENCE GATE, SEE DETAIL SHEET C704.
 - (J) 30" BLACK VINYL COATED CHAIN LINK GATE WITH COMMERCIAL GRADE SWING GATE OPERATOR (SMARTSWING DC 30 BY HYDRUSITYL), (PERIOD EQUAL), SEE ELECTRICAL.
 - (K) ACCESSIBLE PARKING SIGNAGE, SEE DETAIL SHEET C704.
 - (L) TRAFFIC CONTROL SIGNAGE, SEE TRAFFIC CONTROL NOTES THIS SHEET.
 - (M) STOP SIGN, SEE TRAFFIC CONTROL NOTES THIS SHEET.
 - (N) PARKING SPACE MARKINGS, SEE TRAFFIC CONTROL NOTES THIS SHEET.
 - (O) BENCH, SEE SPECS.
 - (P) BIKE RACKS, SEE DETAIL SHEET C704.
 - (Q) STANDARD METHOD OF ENDING CURB AND GUTTER, SEE DETAIL SHEET C704.
 - (R) 18"-VS CROSSWALK, SEE TRAFFIC CONTROL NOTES THIS SHEET.
 - (S) 24" CURB AND GUTTER, SEE DETAIL SHEET C705.
 - (T) ACCESSIBLE CURB RAMP, SEE DETAIL SHEET C705.
 - (U) THE INTERSECTING CURB AND GUTTER.
 - (V) CONCRETE WHEELSTOP, SEE DETAIL SHEET C704.
 - (W) 40-IN TALL, 10-IN DIA. D.O.S. D5-22 K12 RATED SECURITY BOLLARD WITH DECORATIVE COVER, SEE SPECS.
 - (X) 30-FT FLAGPOLE, SEE SPECS.

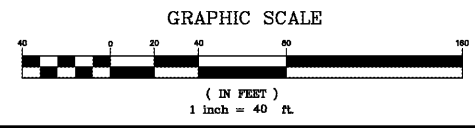
- GENERAL NOTES**
1. ALL DIMENSIONS SHOWN ARE FACE OF CURB AND FACE OF BUILDING WALL, UNLESS OTHERWISE SHOWN.
 2. CONTRACTOR SHALL BE RESPONSIBLE FOR FIELD VERIFICATION OF ALL DIMENSIONS SHOWN AND CONTACT THE ARCHITECT IF ANY DISCREPANCIES OCCUR.
 3. CONSTRUCTION STAKE OUT IS THE RESPONSIBILITY OF THE CONTRACTOR.
 4. ALL SIGNS AND PAVEMENT MARKINGS ARE TO MEET MUTCD (MANUAL ON UNIFORM TRAFFIC CONTROL DEVICES) STANDARDS.
 5. PAVEMENT MARKINGS IN PUBLIC RIGHT-OF-WAYS AND FOR DRIVEWAYS ARE TO BE THERMOPLASTIC AND MEET CITY OF WILMINGTON AND/OR NCDOT STANDARDS.
 6. ALL CONSTRUCTION SHALL BE IN ACCORDANCE WITH CITY OF WILMINGTON STANDARDS AND SPECIFICATIONS.
 7. REPLACEMENT OF ANY BROKEN OR DAMAGED CONCRETE SIDEWALK PANELS OR CURBING THAT OCCURS DURING CONSTRUCTION IS THE RESPONSIBILITY OF THE CONTRACTOR.
 8. ALL PARKING STALL RADI SHALL BE 4' UNLESS OTHERWISE NOTED.
 9. ALL TRAFFIC CONTROL SIGNS AND MARKINGS OFF THE RIGHT-OF-WAY ARE TO BE MAINTAINED BY THE PROPERTY OWNER IN ACCORDANCE WITH MUTCD STANDARDS.
 10. NO PORTION OF THIS PROPERTY IS LOCATED IN THE 100 YEAR FLOOD ZONE PER FIRM PANEL 3720313800 J DATED APR. 3, 2006.
 11. ALL PARKING STALL MARKINGS AND LANE ARROWS WITHIN THE PARKING AREA SHALL BE WHITE.
 12. PERMITTING OF BUSINESS IDENTIFICATION SIGNAGE IS A SEPARATE PROCESS. NCDOT/CITY OF WILMINGTON WILL NOT ALLOW OBSTRUCTIONS WITHIN THE RIGHT-OF-WAY.
 13. ROLL OUT CANS WILL BE UTILIZED FOR THIS PROPERTY, THEREFORE NO DUMPSTER SCREENING IS REQUIRED.

- TRAFFIC CONTROL NOTES**
1. ALL SITE SIGNAGE SHALL BE IN ACCORDANCE WITH THE MANUAL ON UNIFORM TRAFFIC CONTROL DEVICES (MUTCD) AND NCDOT STANDARDS.
 2. ALL SIGNS SHALL BE MOUNTED WITH 7-FT MIN. VERTICAL CLEARANCE TO THE BOTTOM OF THE SIGN ON 2-LB. GALV. STEEL U-CHANNEL POST SET IN 3-FT DEEP X 12-IN DIA. CONCRETE FOOTING.
 3. ALL PAVEMENT MARKINGS SHALL BE IN ACCORDANCE WITH THE MUTCD AND NCDOT STANDARDS AND THE PROJECT SPECIFICATIONS.
- | MARKING | NCDOT STD. | SIZE | COLOR |
|--------------------------|---------------|-------|-------|
| PARKING SPACE | - | 4-IN | WHIT. |
| NO PARKING - FIRE LANE * | - | 4-IN | WHIT. |
| SOLID CROSSWALK | 1205.07(H-VS) | 24-IN | WHIT. |
| STOP BAR | - | 24-IN | WHIT. |
- * NO PARKING - FIRE LANE MARKING SHALL CONSIST OF A 4" SOLID WHITE STRIPE AND 8" HIGH WHITE TEXT "NO PARKING - FIRE LANE" AT 50' INTERVALS. PROVIDE IN ALL PAVED AREAS AS DESIGNATED BY FIRE MARSHALL. (BID SHALL INCLUDE STRIPING AND SIGNAGE AS SHOWN OF PLANS PLUS AN EXTRA 500 LF OF NO PARKING FIRE LANE STRIPING AND 5 NO PARKING FIRE LANE SIGNS.)
4. ALL PAVEMENT MARKINGS SHALL BE ALKYD-RESIN TYPE PAINT PER CITY OF WILMINGTON STANDARDS.
 5. ALL SIGNAGE SHALL BE FIELD STAKED AND THE LOCATIONS APPROVED BY CLH DESIGN PRIOR TO SIGN INSTALLATION.
 6. ALL TRAFFIC CONTROL SIGNS AND MARKINGS OFF THE RIGHT-OF-WAY ARE TO BE MAINTAINED BY THE PROPERTY OWNER IN ACCORDANCE WITH MUTCD STANDARDS.

APPROVED CONSTRUCTION PLAN

PLANNING	NAME	DATE
PLANNING		
TRAFFIC		
FIRE		

City of Wilmington
 Public Services • Engineering Division
 APPROVED STORMWATER MANAGEMENT PLAN
 Date: _____ Permit # _____
 Signed: _____



SHEET
**STAKING PLAN
 C101**
 DESIGN: ZRP
 DRAWN: YA, DL
 REVIEW: ZRP, RL
 CN 5938
 CLH 16-161