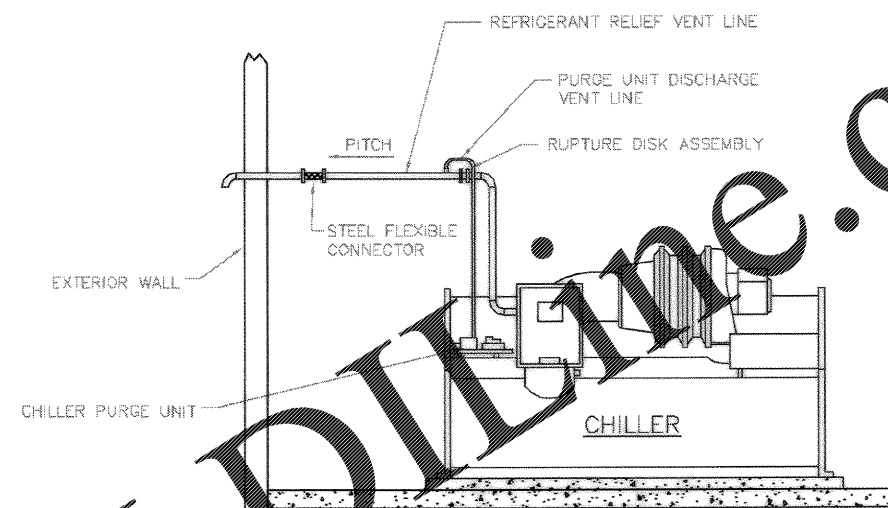
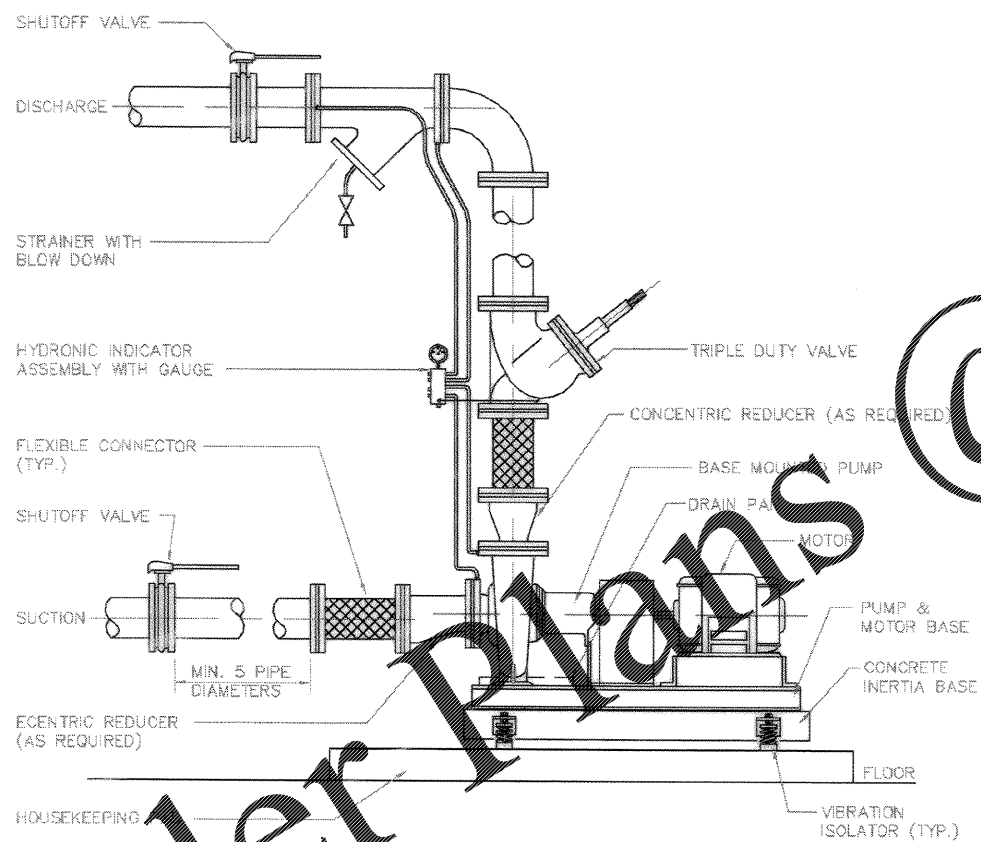


1 WATER COOLED CHILLER PIPING DETAIL
SCALE: NONE

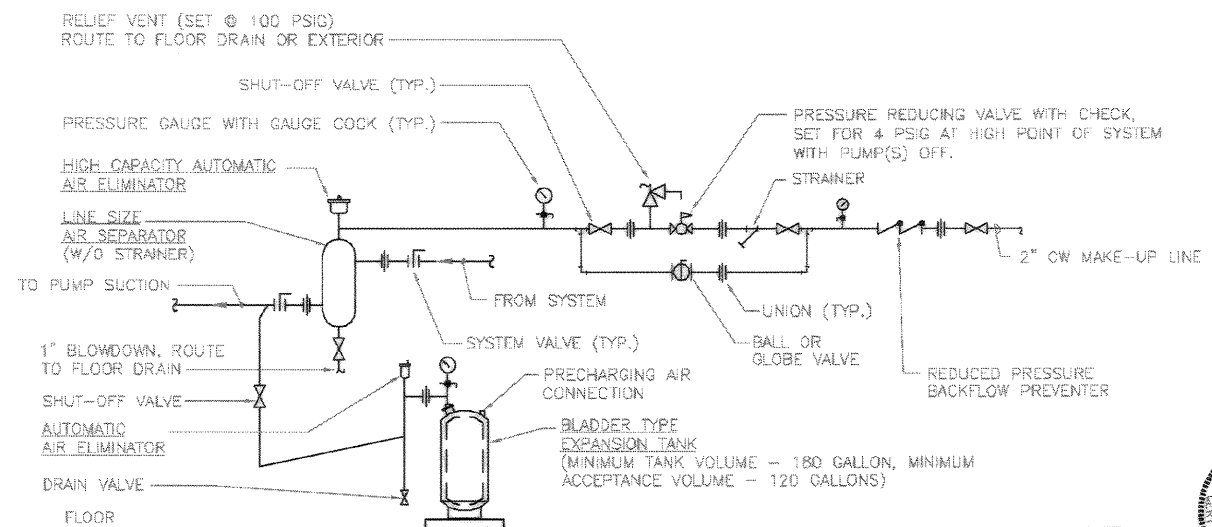


2 REFRIGERANT VENT PIPING DETAIL
SCALE: NONE

NOTE: SIZE VENT LINES IN ACCORDANCE WITH THE MANUFACTURERS RECOMMENDATIONS.



3 CONDENSER WATER END SUCTION PUMP DETAIL
SCALE: NONE



4 EXPANSION TANK, AIR SEPARATOR & MAKE-UP WATER DETAIL
SCALE: NONE

Grid/Booth & Assoc. Inc. Engineering & Construction, S.C. Charleston, S.C. 29405-1000 (803) 737-6377 FAX (803) 737-6378 WWW.GRIDBOOTH.COM	
DRAWING REVISIONS Description No. 1 DRWG. CORRECTED TO AS-BUILT	Prep. By Date 5/14/04 5/14/04
CHARLESTON AIR FORCE BASE DINING FACILITY TYPICAL DETAILS - CPRO APPROVED: <i>[Signature]</i> PE DATE: 5/14/04 EPD FOR COMMANDER, INVAC	
Naval Facilities Engineering Command Southern Division Charleston, South Carolina	
EPIC ENGINEERING INC. No. 7188 No. C00299 SOUTH CAROLINA REGISTERED PROFESSIONAL ENGINEER	
RECORD DRAWING DATE: 9/27/04 CODE I.D. NO.: 80081 DRAWING SIZE: D SPEC. NO. 08-98-0839 CONSTR. CONTR. NO. M2467-98-C-0839 NAFAC DRAWING NO. 5357979 SHEET 154 OF 184	
M-506	

Order Plans

@

WWW.LDLINE.COM