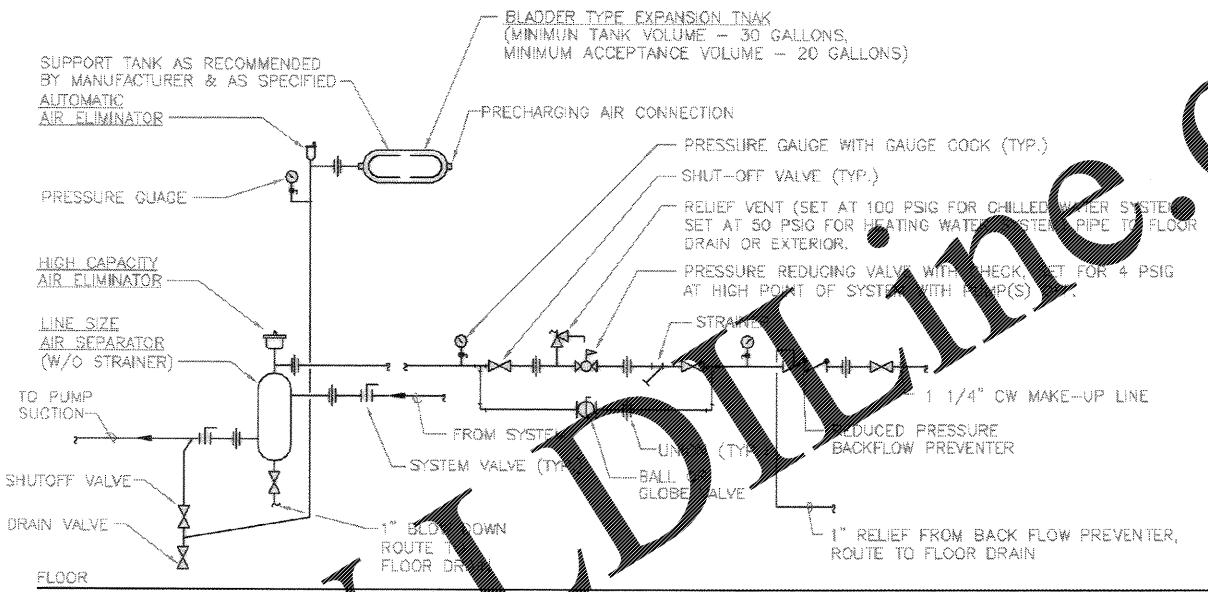
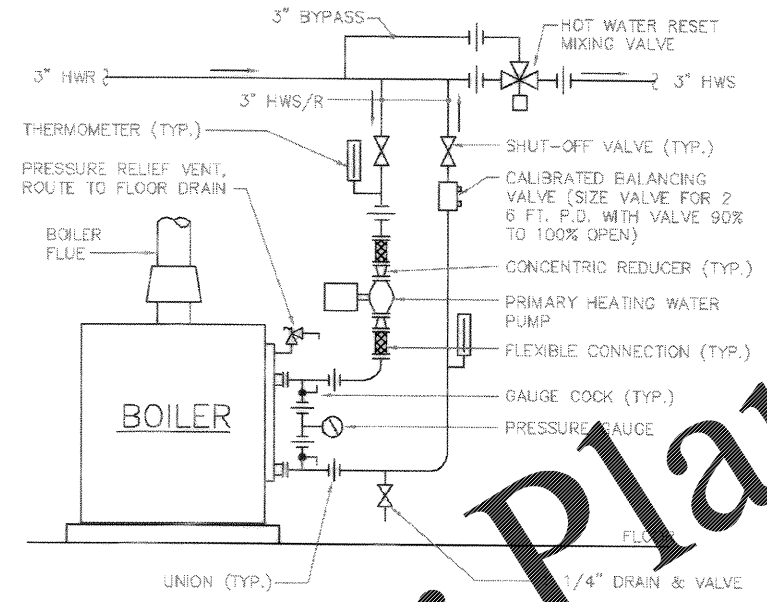


1 CHILLED AND HOT WATER END SUCTION PUMP DETAIL
SCALE: NONE

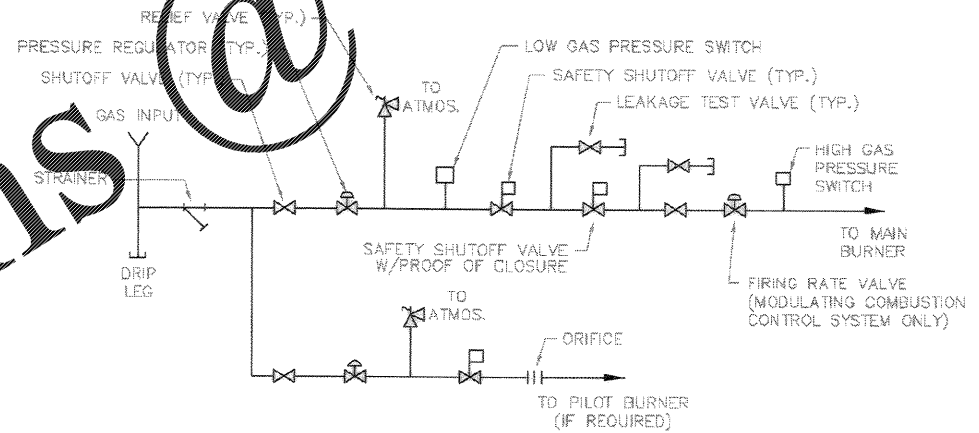


2 EXPANSION TANK, AIR SEPARATOR & MAKE-UP WATER DETAIL
SCALE: NONE

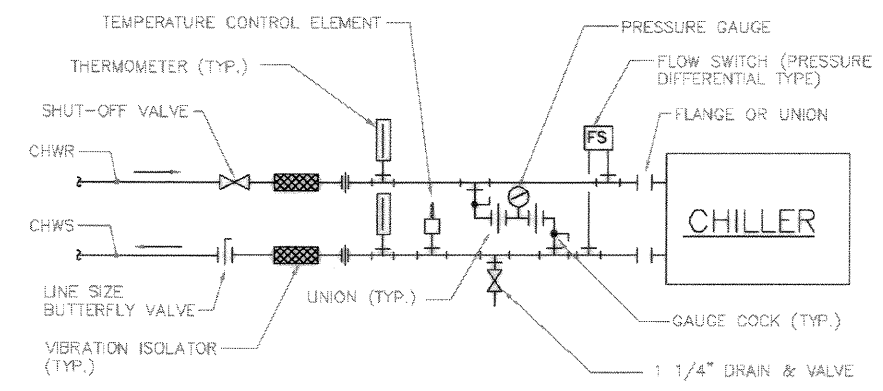
NOTE: THIS DETAIL USED ONLY FOR BOILER HEATING WATER SYSTEM IF CPRO IS ACCEPTED.



3 HEATING WATER BOILER PIPING DETAIL
SCALE: NONE



4 GAS TRAIN DETAIL
SCALE: NONE



5 AIR COOLED CHILLER PIPING DETAIL
SCALE: NONE

NOTE: THIS DETAIL NOT USED IF CPRO IS ACCEPTED.

Glick/Boehm & Associates, Inc. 117 Meeting Street Charleston, S.C. 29401 (803) 727-4377 FAX (803) 727-4378 WWW.GBA-INC.COM		DRAWING REVISIONS Description No. 1 AS-BUILT ORIGIN NO CORRECTIONS Prep By Date Approved RAY GUY 10/1/04 RAY GUY	SUBMITTED BY (FROM NUMBER) [] CHECKED BY (FROM NUMBER) [] DESIGNED BY (FROM NUMBER) [] DRAWN BY (FROM NUMBER) [] TYPED BY (FROM NUMBER) []
CHARLESTON AIR FORCE BASE DINE FACILITY TYPICAL DETAILS APPROVED [Signature] DATE 10/1/04 ERO FOR COMMANDER, NAFAC		CHARLESTON, SOUTH CAROLINA	
Naval Facilities Engineering Command Southern Division Charleston, South Carolina			
RECORD DRAWING DATE 9/27/04 CODE LD. NO. 80081 DRAWING SIZE: D SPEC. NO. D6-88-0938 CONSTR. CONTR. NO. N62467-88-C-0939 TRAFFIC DRAWING NO. 535737B SHEET 130 OF 194 M-505			

Order Plans @ WWW.LDOnline.com