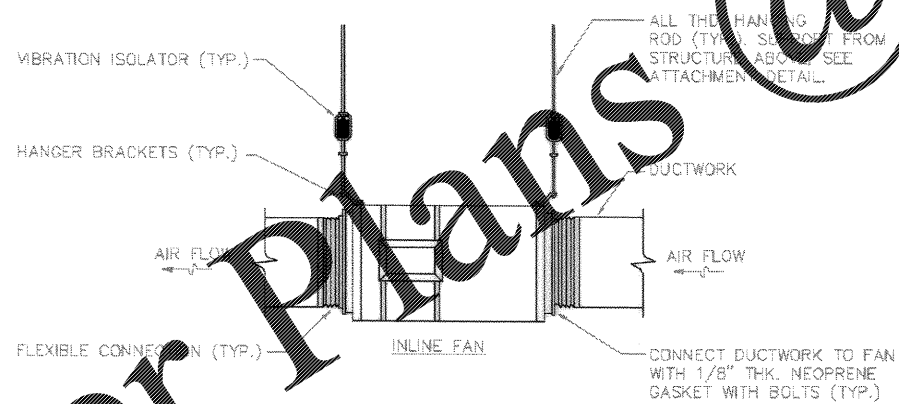


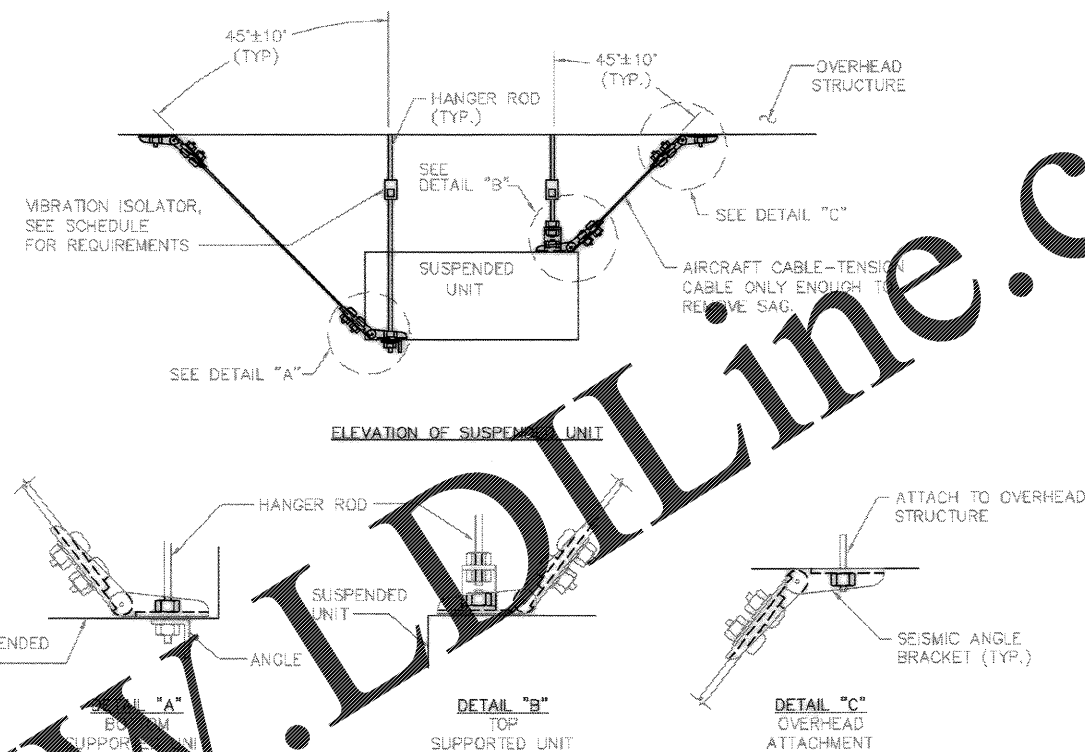
1
M502 **PIPING SEISMIC RESTRAINT DETAIL**
SCALE: NONE

- NOTES:
- REFER TO SMACNA GUIDELINES FOR MAXIMUM SPACING OF SEISMIC RESTRAINTS.
 - ALL GAS, FIRE SUPPRESSION AND HIGH HAZARD PIPING SYSTEMS SHALL BE SEISMICALLY RESTRAINED (NO EXCEPTIONS). ALL OTHER PIPING SYSTEMS SHALL BE SEISMICALLY RESTRAINED WHEN REQUIRED BY THE VIBRATION SYSTEMS & SEISMIC RESTRAINT SCHEDULE UNLESS NOT REQUIRED BY ANY ONE OF THE FOLLOWING CONDITIONS:
 - PIPING SUSPENDED BY INDIVIDUAL HANGERS 12 INCHES OR LESS IN LENGTH FROM THE TOP OF THE PIPE TO THE SUPPORTING STRUCTURE.
 - PIPING IN BOILER AND MECHANICAL ROOMS WHICH HAS LESS THAN 1 1/4 INCH INSIDE DIAMETER.
 - PIPING IN OTHER AREAS WHICH HAS LESS THAN 2 1/2 INCH INSIDE DIAMETER.

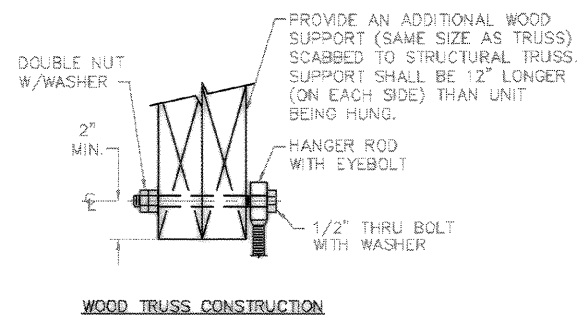
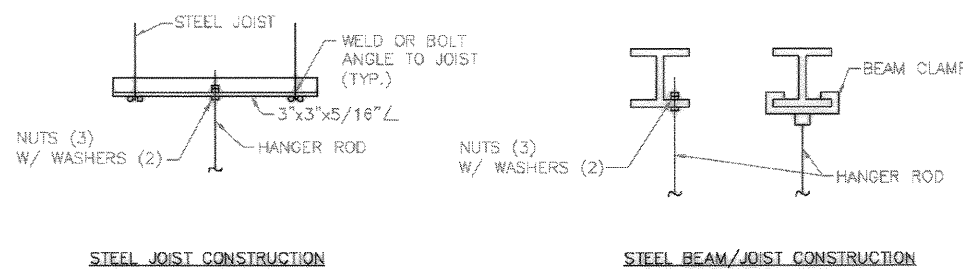


3
M502 **INLINE FAN INSTALLATION DETAIL**
SCALE: NONE

NOTE:
PROVIDE MANUFACTURERS RECOMMENDED CLEARANCES FOR UNIT SERVICE AND ACCESS.



2
M502 **SUSPENDED UNIT SEISMIC RESTRAINT DETAIL**
SCALE: NONE



4
M502 **OVERHEAD ATTACHMENT DETAILS**
SCALE: NONE

DRAWING REVISIONS		Click/Boehm & Associates, Inc. 247 Hickory, St. Matthews, N.C. 28105 TEL: 704-837-8377
Rev.	Date	Author
1	11/17/04	Click/Boehm & Associates, Inc.
Description		Click/Boehm & Associates, Inc.
1. AS-BUILT DRAWING, NO CORRECTIONS		Click/Boehm & Associates, Inc.
APPROVED		Click/Boehm & Associates, Inc.
CHARLESTON AIR FORCE BASE		Click/Boehm & Associates, Inc.
CHARLESTON, SOUTH CAROLINA		Click/Boehm & Associates, Inc.
DINING FACILITY		Click/Boehm & Associates, Inc.
TYPICAL DETAILS		Click/Boehm & Associates, Inc.
Naval Facilities Engineering Command		Click/Boehm & Associates, Inc.
Southern Division		Click/Boehm & Associates, Inc.
Charleston, South Carolina		Click/Boehm & Associates, Inc.
RECORD DRAWING DATE		9/27/04
CODE: 1.2, 1.3, 1.4, 1.5, 1.6, 1.7, 1.8, 1.9, 2.0, 2.1, 2.2, 2.3, 2.4, 2.5, 2.6, 2.7, 2.8, 2.9, 3.0, 3.1, 3.2, 3.3, 3.4, 3.5, 3.6, 3.7, 3.8, 3.9, 4.0, 4.1, 4.2, 4.3, 4.4, 4.5, 4.6, 4.7, 4.8, 4.9, 5.0, 5.1, 5.2, 5.3, 5.4, 5.5, 5.6, 5.7, 5.8, 5.9, 6.0, 6.1, 6.2, 6.3, 6.4, 6.5, 6.6, 6.7, 6.8, 6.9, 7.0, 7.1, 7.2, 7.3, 7.4, 7.5, 7.6, 7.7, 7.8, 7.9, 8.0, 8.1, 8.2, 8.3, 8.4, 8.5, 8.6, 8.7, 8.8, 8.9, 9.0, 9.1, 9.2, 9.3, 9.4, 9.5, 9.6, 9.7, 9.8, 9.9, 10.0		
DRAWING SIZE:		D
SPEC. NO. 06-88-0938		
CONSTR. CONTR. NO.		062467-88-C-0939
NAVFAC DRAWING NO.		63579.75
SHEET 130 OF 194		
M-502		

Order Plans @ WWW.LDLine.com