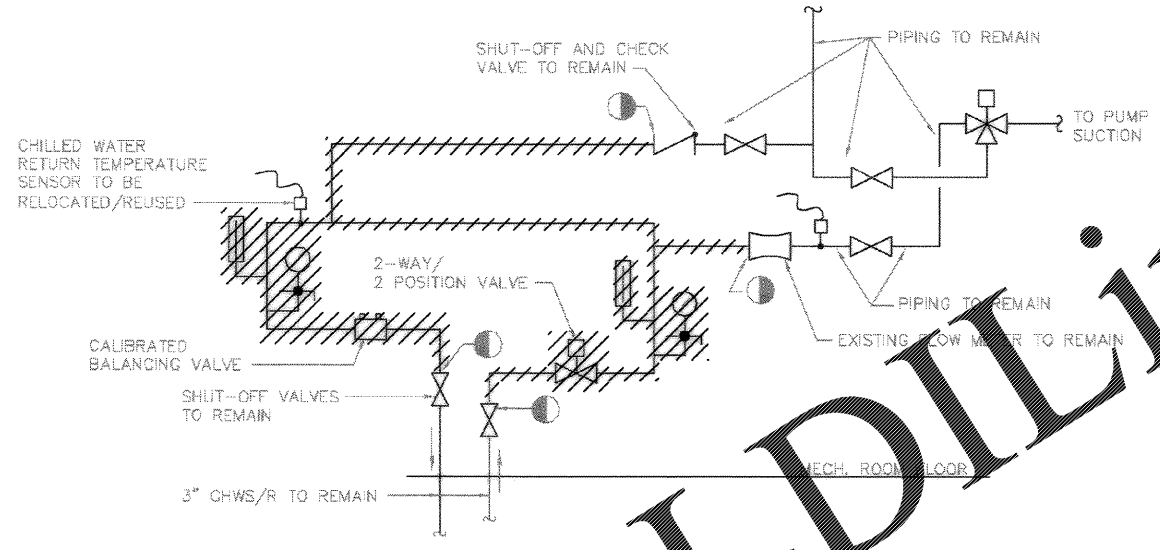
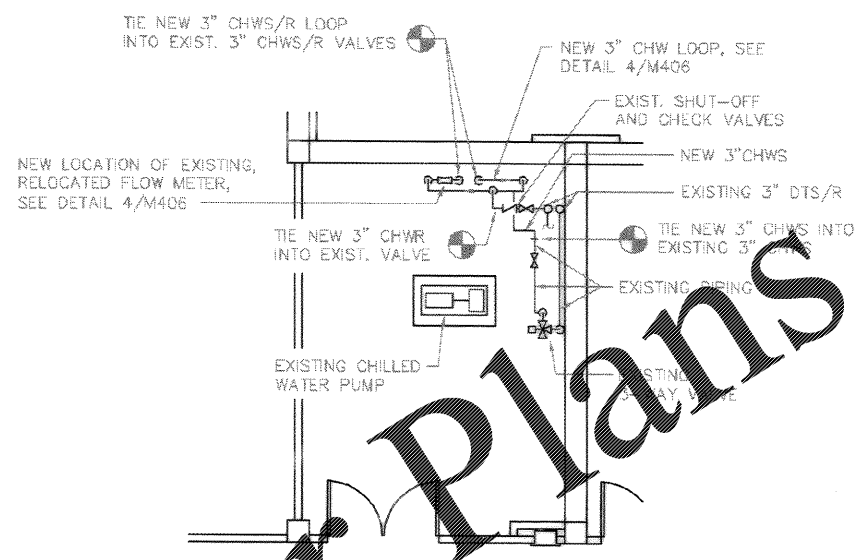


1 M109 MECHANICAL ROOM DEMOLITION PLAN - BUILDING 477  
SCALE: 1/4"=1'-0"

NOTE: FOR CLARITY, NOT ALL PIPING IN MECHANICAL ROOM IS SHOWN. SEE DETAIL 2/M406.

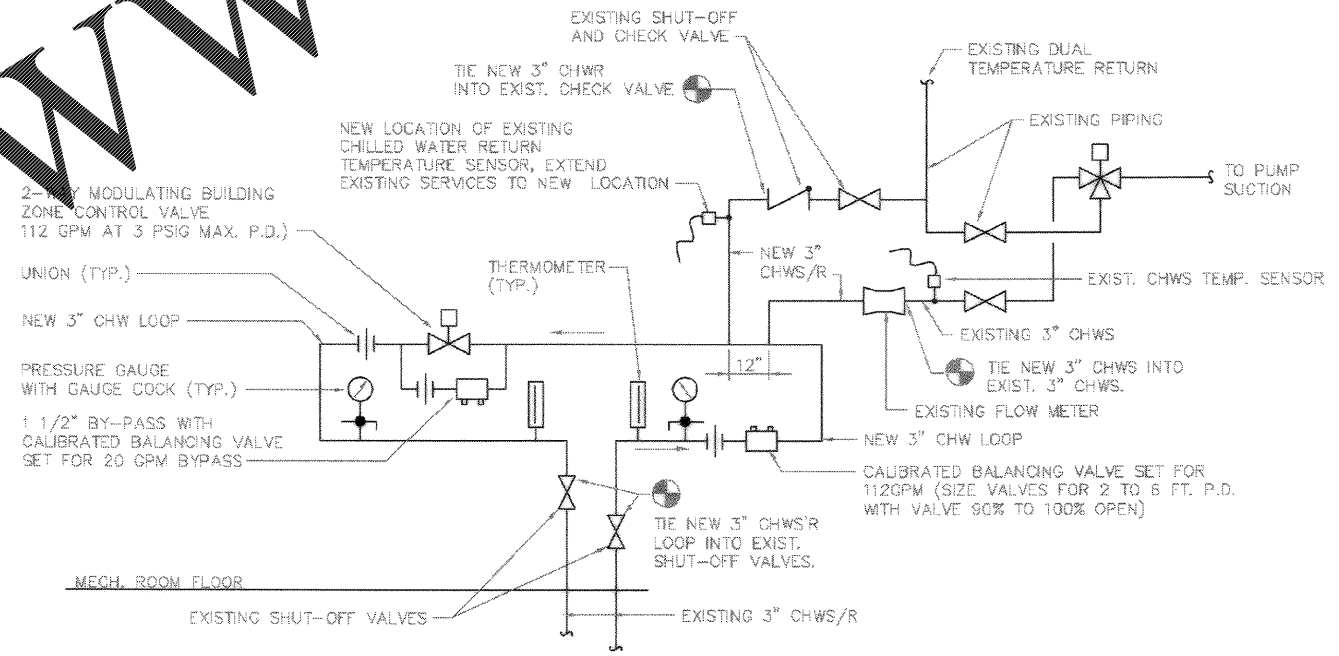


2 M406 PIPING DEMOLITION DETAIL  
SCALE: NONE



3 M109 MECHANICAL ROOM RENOVATION PLAN - BUILDING 477  
SCALE: 1/4"=1'-0"

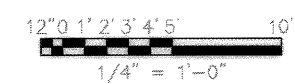
NOTE: FOR CLARITY, NOT ALL PIPING IN MECHANICAL ROOM IS SHOWN. SEE DETAIL 4/M406.



4 M406 SECONDARY LOOP PIPING DETAIL  
SCALE: NONE

NOTE: INSTALL AIR VENT AT HIGH POINT IN NEW SECONDARY LOOP.

GRAPHIC SCALE



WWW.LDILine.com

Order Plans

Glick/Boehm & Associates, Inc. 247 Meeting Street Charleston, S.C. 29403 (803) 732-8377	
Description 1 AS-BUILT DRAWG. NO. CORRECTIONS	Prepped By Date Drawn By Checked By Approved By Title
DRAWING REVISIONS	
CHARLESTON AIR FORCE BASE CHARLESTON, SOUTH CAROLINA	
DINING FACILITY	
ENLARGED MECHANICAL PLANS AND DETAILS - CPRO	
APPROVED: [Signature] DATE: 8/21/04	
Naval Facilities Engineering Command Southern Division Charleston, South Carolina	
RECORD DRAWING DATE: 9/27/04 CODE: LD, NO. 80081 DRAWING SIZE: D SPEC. NO. D6-98-0938 CONSTR. CONTR. NO. N62467-98-C-0938 NAUPAC DRAWING NO. 5357973 SHEET 148 OF 194	
M-406	