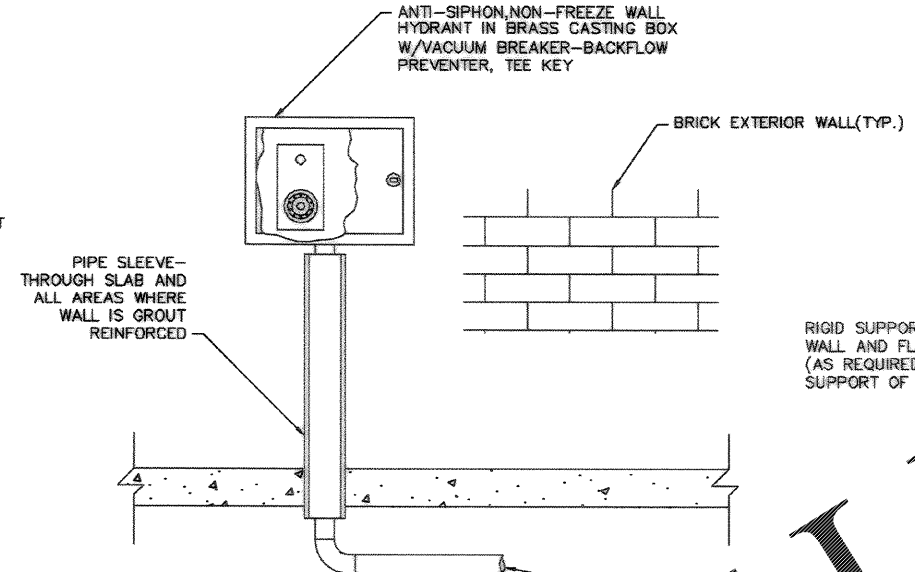
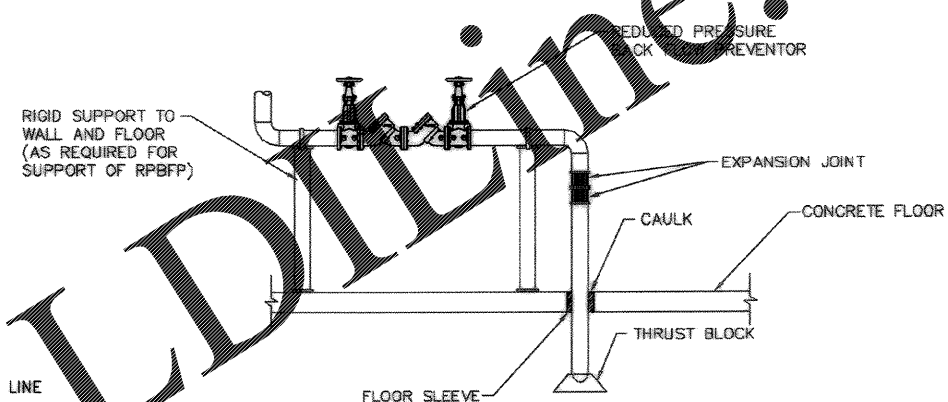


NOTE: GREASE TRAP CONSTRUCTION AND INSTALLATION SHALL MEET REQUIREMENTS OF NORTH CHARLESTON SEWER DISTRICT RESOLUTION 97-13.

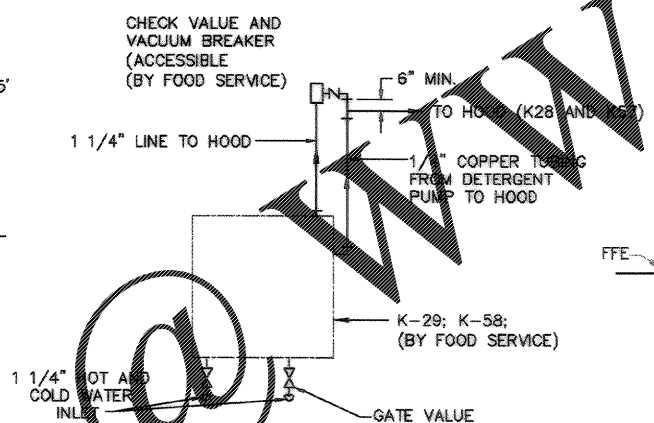
TYPICAL GREASE TRAP-1500 GALLON
SCALE: NONE



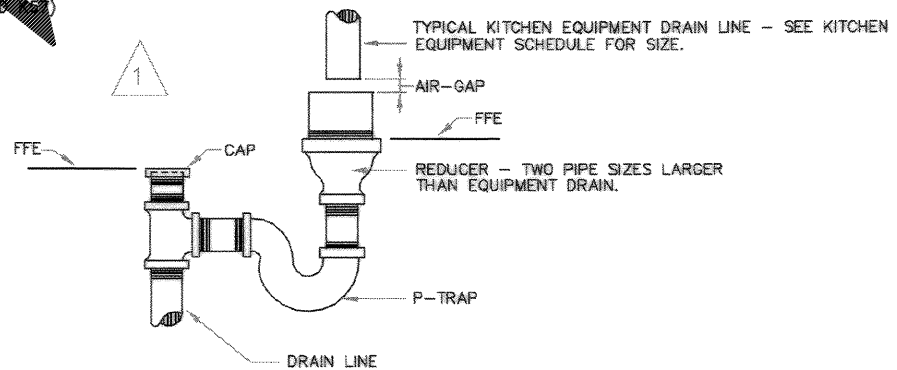
WALL HYDRANT DETAIL (P-13)
SCALE: NONE



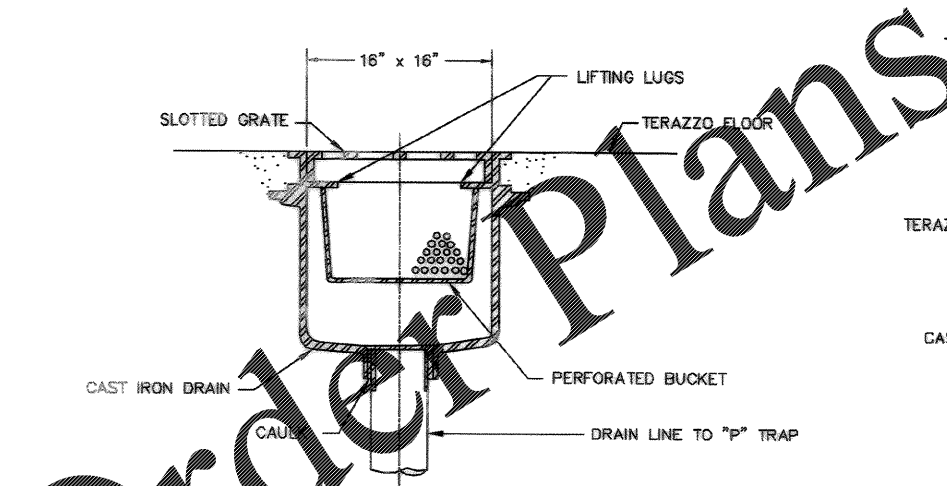
TYPICAL WATER PIPING ENTRANCE DETAIL
SCALE: NONE



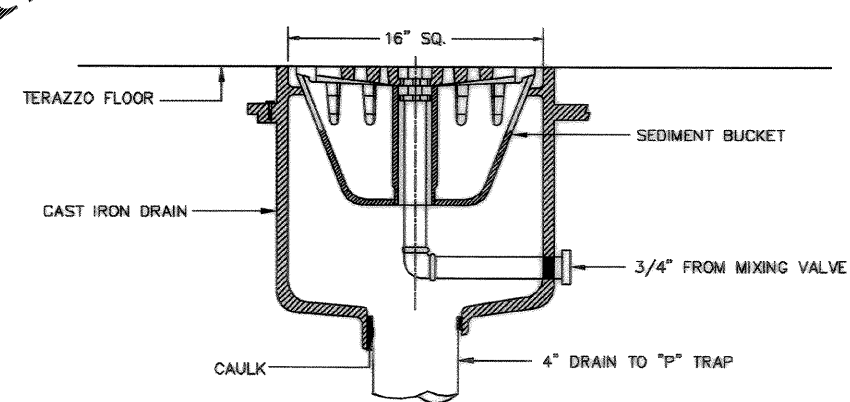
TYPICAL PLUMBING CONTROL PANEL
SCALE: NONE



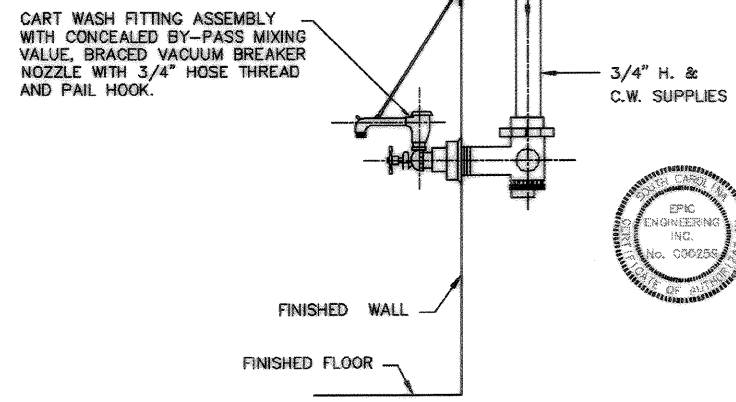
HUB DRAIN DETAIL (P-12)
SCALE: NONE



RECEPTOR DRAIN DETAIL (P-15)
SCALE: NONE



CAN WASH DRAIN DETAIL (P-14)
SCALE: NONE



CART WASH SECTION DETAIL (P-15)
SCALE: NONE

DRAWING REVISIONS Description: CORRECTED TO AS-BUILT Date: 9/27/04 By: MJK Checked: JAL Approved: JAL Date: 9/27/04	PROJECT NO. 07-6377 SHEET NO. P-502 OF 194
CHARLESTON AIR FORCE BASE DINING FACILITY PLUMBING DETAILS	APPROVED: [Signature] DATE: 9/27/04
Noval Facilities Engineering Command Southern Division Charleston, South Carolina	EPIC ENGINEERING INC. No. 2188 No. 000255
RECORD DRAWING DATE: 9/27/04 CODE: 11-110-10081 DRAWING SIZE: 11 SPEC. NO. 06-08-0936 CONSTR. CONTR. NO. 162467-98-C-0939 NAVFAC DRAWING NO. 5357954 SHEET 129 OF 194	P-502

Order Plans