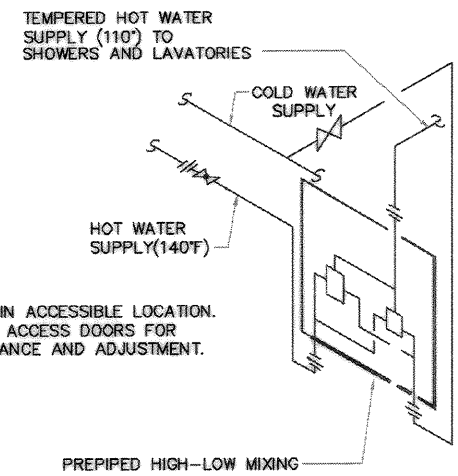
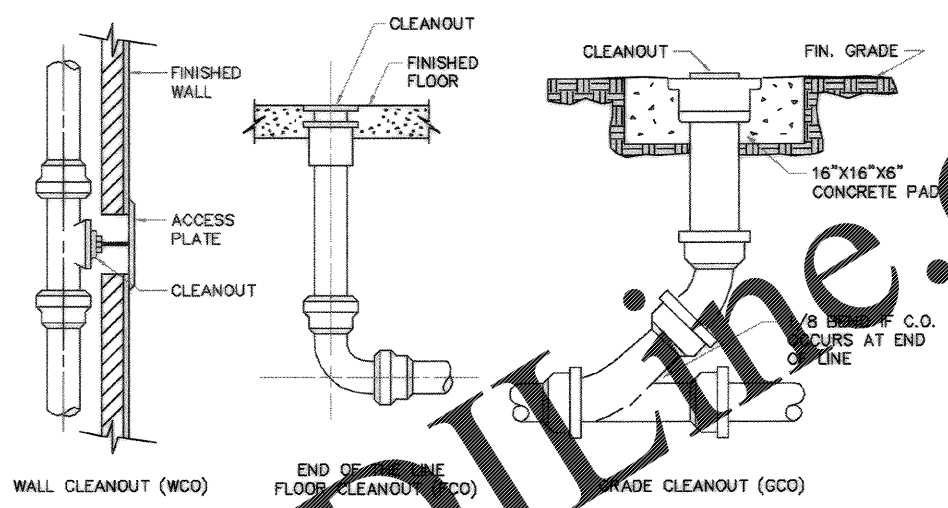
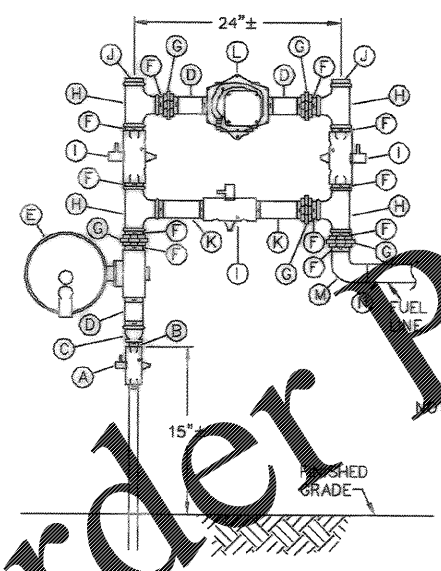


**HOT WATER SYSTEM DETAIL**  
SCALE: NONE



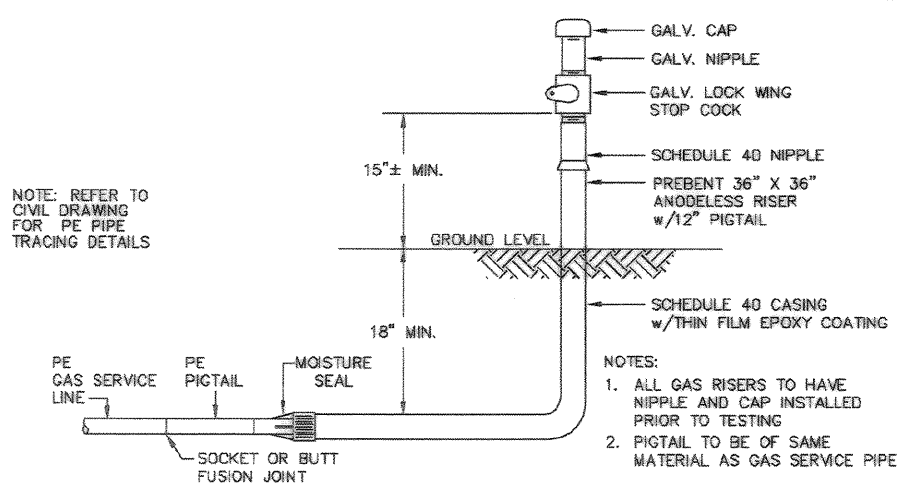
**TEMPERED MIXING VALVE (P-9)**  
SCALE: NONE



- MATERIALS**
- A - LOCK WING METER COCK
  - B - NIPPLE
  - C - REDUCING COUPLING
  - D - NIPPLE
  - E - REGULATOR
  - F - GALV. NIPPLE
  - G - GALV. UNION
  - H - GALV. TE
  - I - GALV. LOCK WING STOP COCK
  - J - GALV. PIGTAIL
  - K - GALV. NIPPLE
  - L - METER
  - M - GALV. 90° ELL
  - N - STEEL PIPE

- NOTE: INLET PRESSURE 35 PSIG MIN. OUTLET PRESSURE 14" W.C. MAX.
- GENERAL NOTES:**
1. RISER SHOULD BE 20"± FROM BUILDING WALL.
  2. SUPPORTS SHOULD BE PLACED UNDER METER ASSEMBLY BEFORE CONNECTIONS ARE MADE.
  3. INLET PRESSURE 35 PSIG OUTLET PRESSURE 14" W.C.

**TYPICAL GAS METER/REGULATOR**  
SCALE: NONE



**TYPICAL GAS SERVICE RISER**  
SCALE: NONE

WWW.LDLINE.COM

Order Plans @

DRAWING REVISIONS		Prep By: <b>ALP</b> Date: <b>9/27/24</b> Appr'd: <b>PE</b> Title: <b>PE</b>
Description: <b>DRAWG. CORRECTED TO AS-BUILT</b>		Drawn: <b>ALP</b> Date: <b>9/27/24</b> Appr'd: <b>PE</b> Title: <b>PE</b>
CHARLESTON AIR FORCE BASE DINING FACILITY PLUMBING DETAILS		CHARLESTON, SOUTH CAROLINA Southern Division Charleston, South Carolina
APPROVED: <b>PE</b> DATE: <b>9/27/24</b>		APPROVED: <b>PE</b> DATE: <b>9/27/24</b>
RECORD DRAWING DATE: <b>9/27/24</b> CODE: <b>LD</b> No. <b>808E1</b> DRAWING SIZE: <b>11</b> SPEC. NO.: <b>06-88-0938</b> CONSTR. CONTR. NO.: <b>182487-88-C-0938</b> NAVFAC DRAWING NO.: <b>5357953</b> SHEET <b>128</b> OF <b>194</b>		EPIC ENGINEERING INC. No. 2188 No. 000259 STATE OF ALABAMA PROFESSIONAL ENGINEER
<b>P-501</b>		