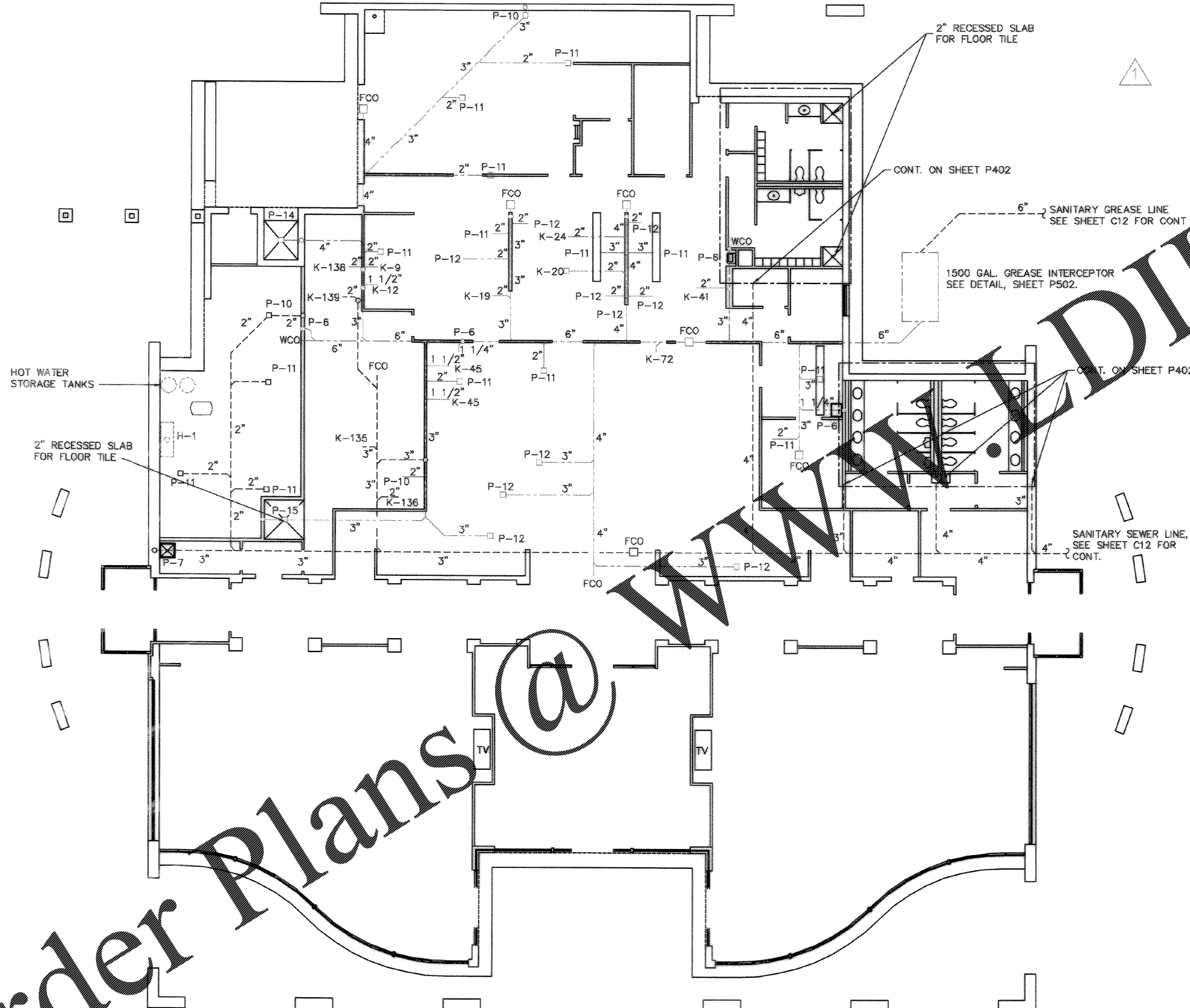


Order Plans @ [www.dlLine.com](http://www.dlLine.com)



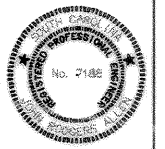
- NOTES:**
1. REFER TO SHEETS K301 AND K302 FOR DETAILED KITCHEN EQUIPMENT INSTALLATION INFORMATION.
  2. SEWER LINES APPROVED AS SCHEDULE 40 PVC.

CRICK/BROOKS & ASSOCIATES, INC. 247 Meeting Street Charleston, S.C. 29403 (803) 777-6377	DATE
DESIGNED BY: J. S. GIBSON	DATE
DRAWN BY: J. S. GIBSON	DATE
CHECKED BY: J. S. GIBSON	DATE
APPROVED BY: J. S. GIBSON	DATE

REV.	DESCRIPTION	DATE	BY	CHKD.
1	DRWG. CORRECTED TO AS-BUILT	11/11/04	JMG	JMG

CHARLESTON AIR FORCE BASE	CHARLESTON, SOUTH CAROLINA
<b>DINING FACILITY</b>	
SANITARY WASTE & SEWER PLAN	
APPROVED: <i>[Signature]</i>	DATE: 11/11/04

Naval Facilities Engineering Command  
Southern Division  
Charleston, South Carolina



RECORD DRAWING DATE	9/27/04
CODE LD. NO.	80081
DRAWING SIZE	D
SPEC. NO.	06-88-0839
CONSTR. CONTR. NO.	NS2467-88-C-0839
NAVFAC DRAWING NO.	6357950

SHEET 128 OF 184  
**P-102**

**SANITARY WASTE & SEWER PLAN - DINING HALL**  
SCALE: 1/8" = 1'-0"