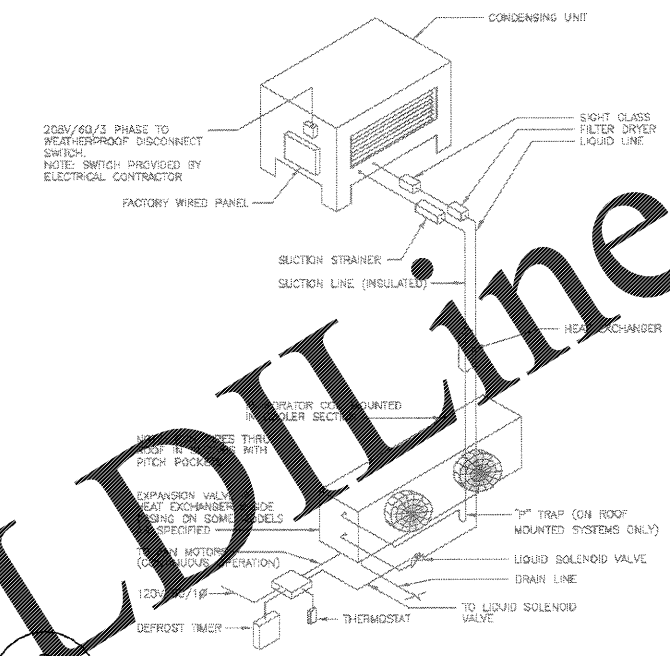
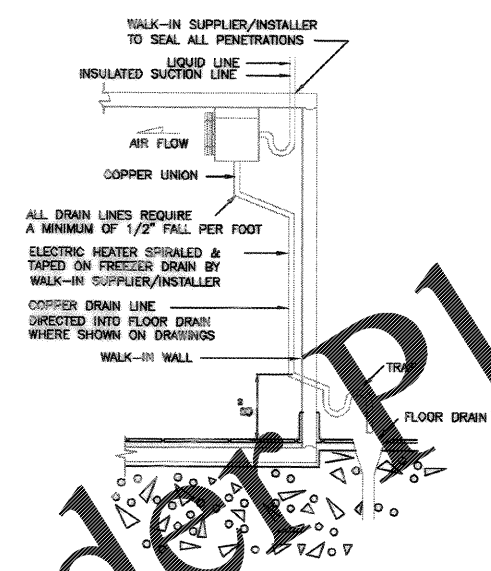


NOTE: VERIFY DIMENSIONS WITH EQUIPMENT SUPPLIER TO ENSURE PROPER FIT.

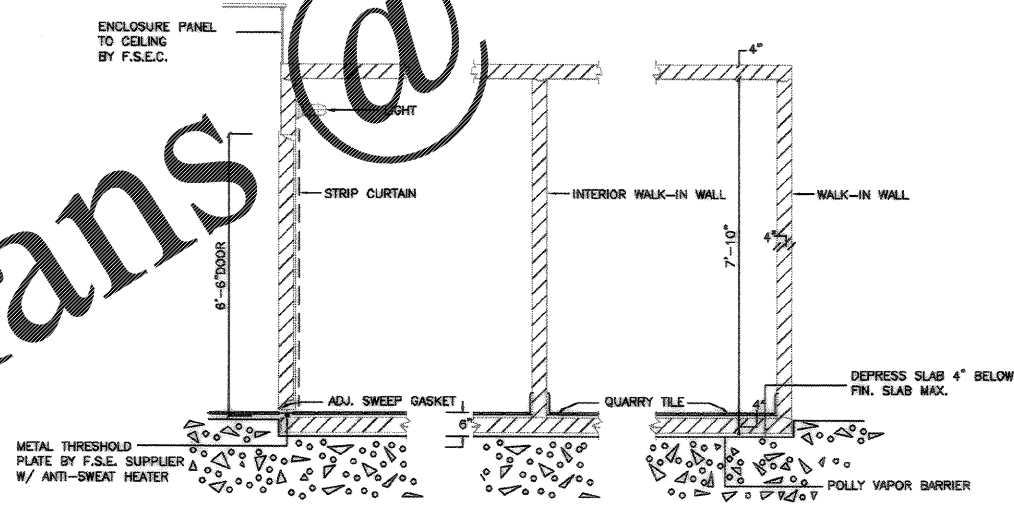


2 ISOMETRIC SCHEMATIC - PIPING & WIRING FOR OFF-CYCLE DEFROST SYSTEM FOR COOLER SECTION
K601 -NO SCALE-

1 WALK-IN COOLER/FREEZER FLOOR DEPRESSION PLAN
K601 1/4"=1'-0"

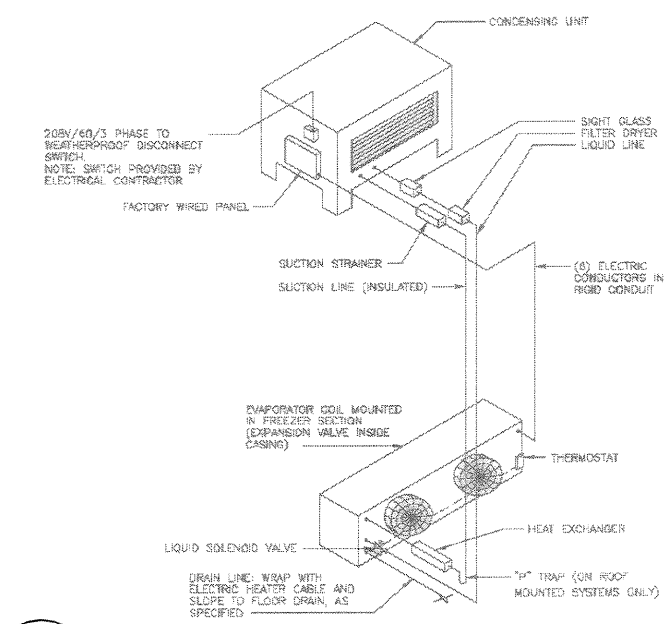


3 TYPICAL DRAIN LINE DETAIL FROM EVAPORATOR COIL
K601 -NO SCALE



4 SECTION THRU WALK-IN COOLER/FREEZER FLOOR
K601 -NO SCALE

NOTE: BUILDING CONTRACTOR SHALL PROVIDE VAPOR BARRIER BETWEEN FLOOR PAD AND PREPARED FLOOR. SHALL BE MOISTURE-RESISTANT BY SEALANT DIVISION OR EQUIVALENT. FLOOR TILE SHALL BE LAID IN WALK-IN UNIT SLIGHTLY ELEVATED SO THAT LIQUIDS CAN DRAIN TOWARDS ENTRANCE DOOR.



5 ISOMETRIC SCHEMATIC - AUTOMATIC ELECTRIC DEFROST FOR FREEZER SECTION
K601 -NO SCALE-

Glick/Boehm & Associates, Inc. 247 Manning Street, S.W. Charleston, S.C. 29405 (803) 733-1111 FAX: (803) 733-1112 SUBMITTED BY (FIRM NAME/PROJECT)					
DRAWING REVISIONS Description Rev. 1 AS-BUILT FROM NO CONNECTIONS	Date 5/11/04	Prepped By AJP	Checked By [Blank]	Drawn By [Blank]	Title [Blank]
CHARLESTON AIR FORCE BASE DINING FACILITY COOLER/FREEZER FLOOR DEPRESSION		APPROVED: [Signature] PE DATE: 5/11/04 ETD FOR COMMAND, WAFB		Naval Facilities Engineering Command Southern Division Charleston, South Carolina	
RECORD DRAWING DATE 9/27/04		CODE I.D. NO. 80081		DRAWING SIZE: D	
SPEC. NO. 06-98-0939		CONSTR. CONTR. NO. N62467-98-C-0939		NAVFAC DRAWING NO. 5357941	
SHEET 118 OF 194		K-601		468-79	